



Sony Ericsson Xperia X10 Screen Replacement

Guide will show how to replace the glass on the front of the phone.

Written By: Matt



INTRODUCTION

This guide is going to show you how to replace a cracked or scratched glass screen. This guide only shows how to replace the glass, not the LCD screen.



TOOLS:

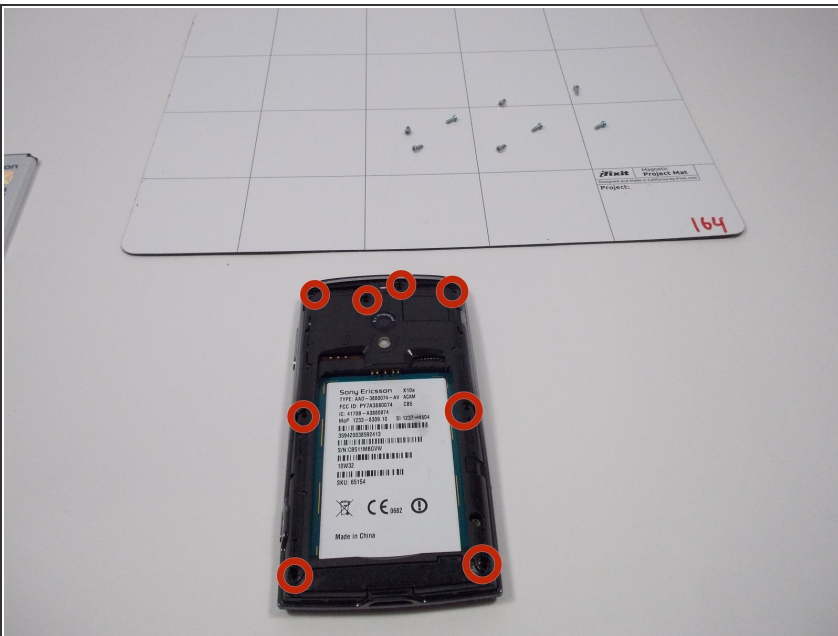
- [iFixit Opening Tools](#) (1)
 - [T6 Torx Screwdriver](#) (1)
 - [Flathead Screwdriver](#) (1)
-

Step 1 — Glass Screen



- Place the phone with the back facing up. Remove the back cover and the battery.

Step 2



- Remove the eight 5mm T6 screws from the back of the phone.

Step 3



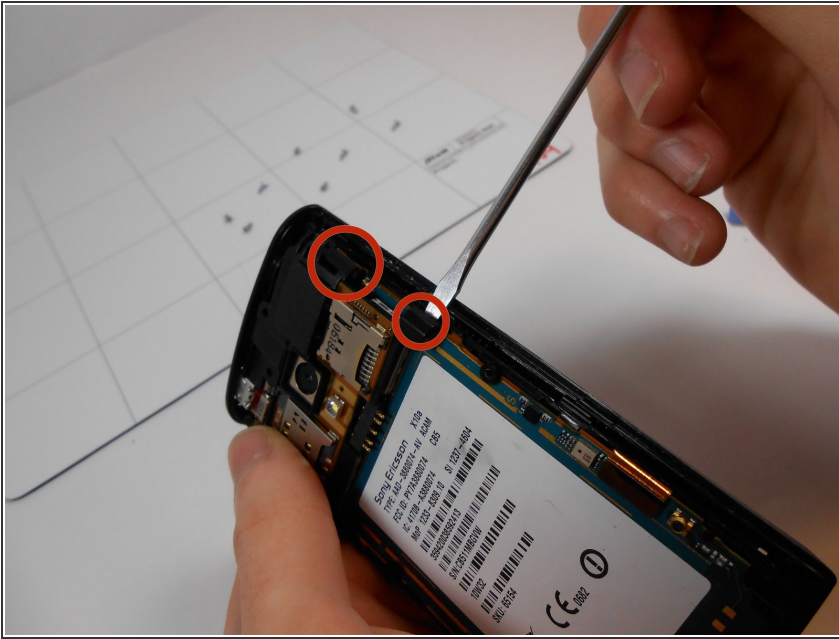
- Use a case opening tool to release clips holding together the case. It should be easier starting at the bottom right side of the phone, as indicated in the image. Insert the tool and run it down the side of the phone, using a prying motion to pull it apart.

Step 4



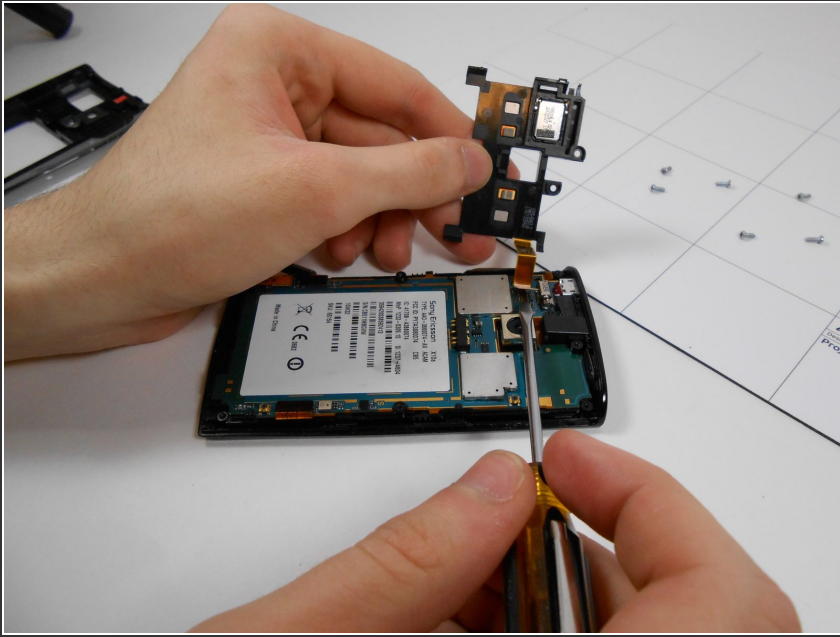
- The case should be in two pieces. Take the side indicated in the left side of the image and put it out of the way.

Step 5



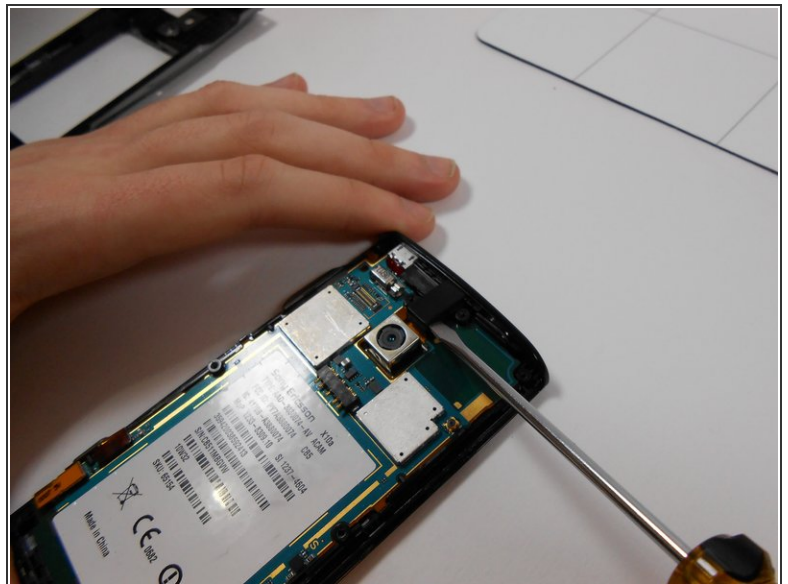
- Insert a flat head screw driver under the two clips and pry up. The chip should come loose with just a ribbon cable holding it to the rest of the phone.

Step 6



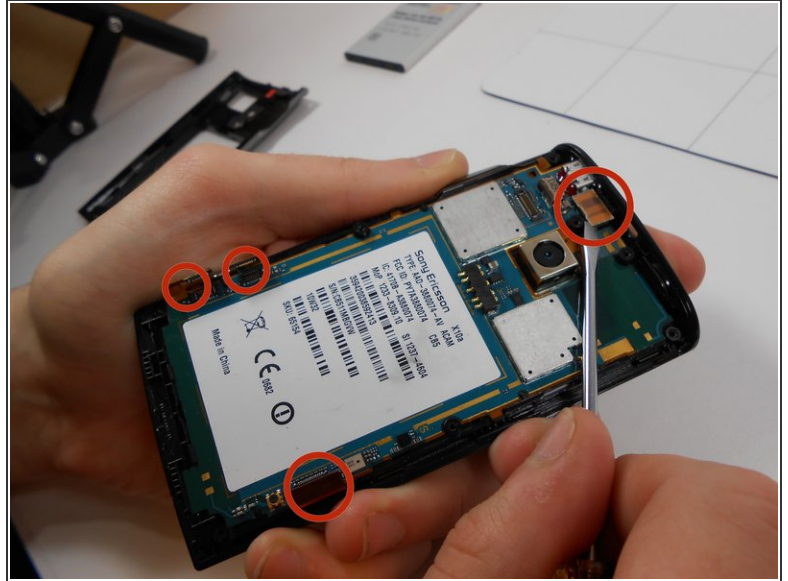
- Flip the chip to the left and remove the ribbon cable from the rest of the phone using a flat head screw driver. Gently insert the screw driver under the cable and pry up.

Step 7



- If the volume rocker and camera button haven't fallen off yet, remove them and put them off to the side. Using your fingers or a screwdriver, pull off the black plastic piece on the very top of the phone. This is the audio jack.

Step 8



- Using a flat head screw driver, undo the ribbon cables connected to the phone. There should be two on the left, one on the right, and one on the top.

Step 9



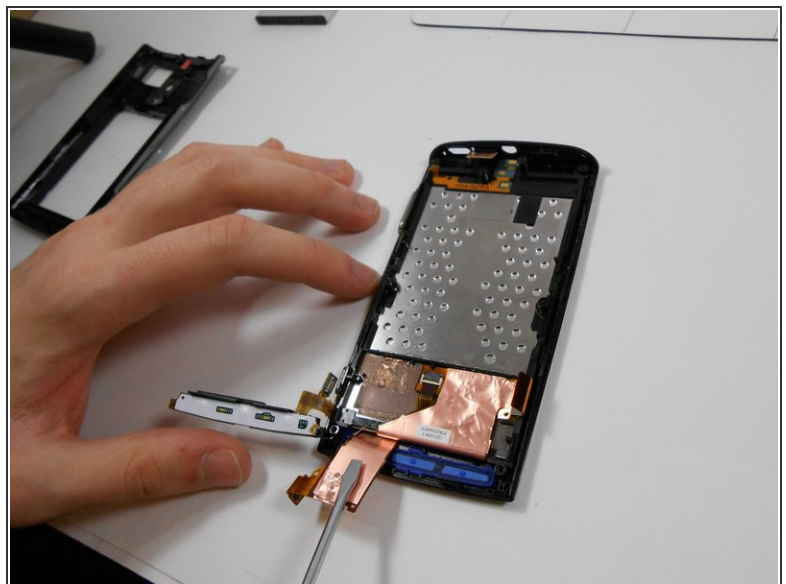
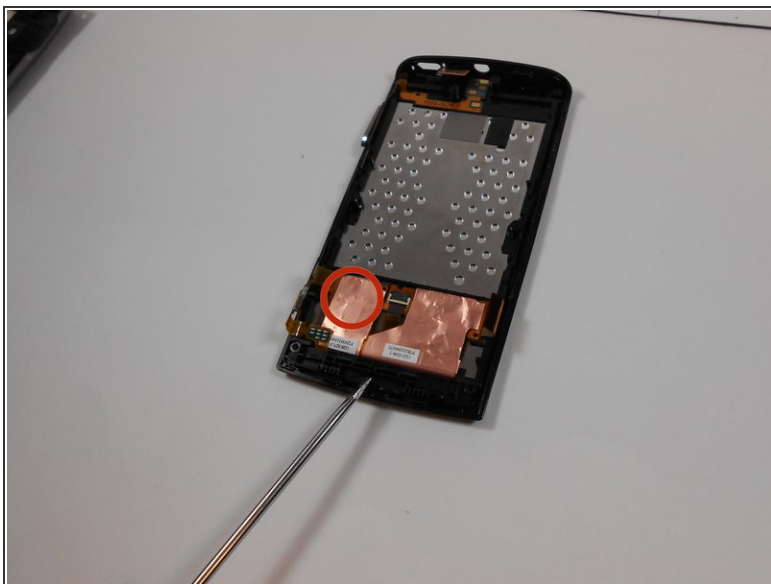
- Gently insert a flat head screw driver under the logic board and pry to remove it from the phone casing. There should be a notch where a screw driver can fit as indicated in the image.

Step 10



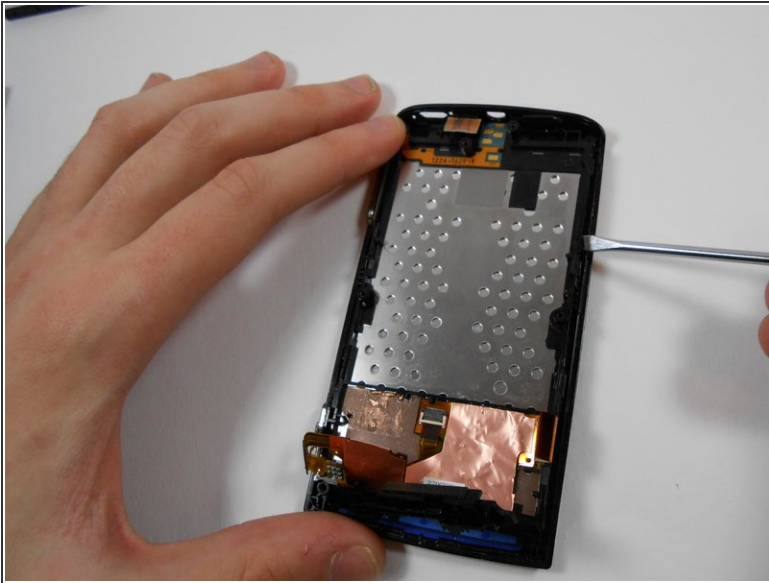
- Logic board should be removed from the phone. Put it off to the side.

Step 11



- Using a flat head screw driver, disconnect the glue holding the left ribbon cable to the phone. Once unglued, the cable should flip back and still be connected to the phone. Pull up the black plastic piece being pointed to in the image.

Step 12



- Using a flat head screwdriver, pry up the board. Should have to pry from the left and from the right. Nothing is holding in the power button on the top of the phone, go ahead and remove it.

Step 13



- The glass front can now be replaced. It appears that the front buttons, front plastic face, and the glass screen are all one piece.

To reassemble your device, follow these instructions in reverse order. The pieces need to be placed exactly back into the phone as they came out or else they won't fit together correctly.