



Sony Ericsson s710a Main Interface Buttons Replacement

This is a step-by-step guide about how to replace the main interface buttons on the Sony Ericsson s710a cellular phone.

Written By: Alexander



INTRODUCTION

This guide will detail how to detach the two halves of the phone, remove the LCD screen, and gain access to the main control buttons.

Accessing this part of the phone will allow you to clean or replace any parts that are dirty or damaged.



TOOLS:

- [Phillips #00 Screwdriver](#) (1)
 - [iFixit Opening Tools](#) (1)
-

Step 1 — Battery



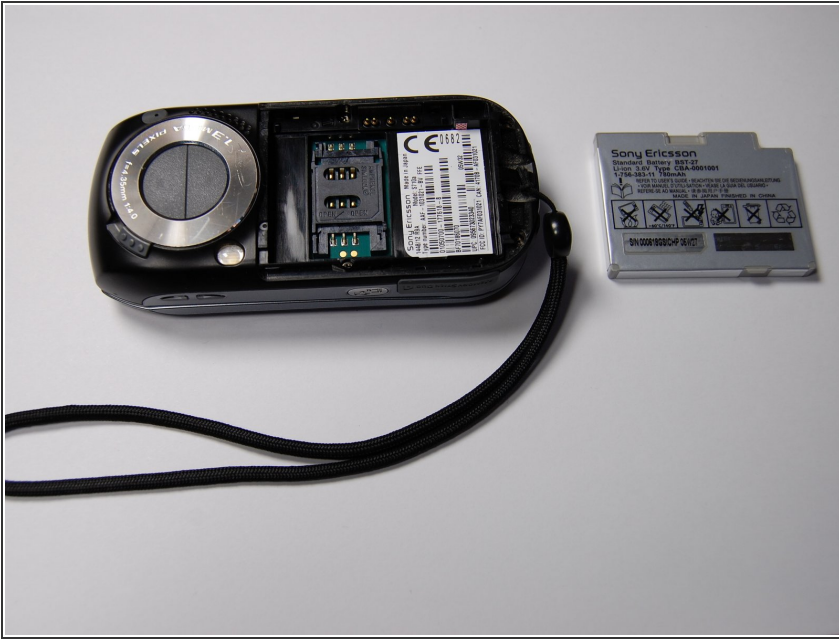
- Remove the back cover by sliding it off.

Step 2



- Once the back cover is removed, pull out the battery using your finger as shown.

Step 3



- The battery can now be replaced if desired.
- ⓘ The battery is a 780 mAh rechargeable Lithium Ion battery.

Step 4 — LCD Screen



- Remove the four 6mm Phillips head screws located beneath the battery.
- ⓘ Set aside the screws in a designated container so that they can easily be found during reassembly.

Step 5



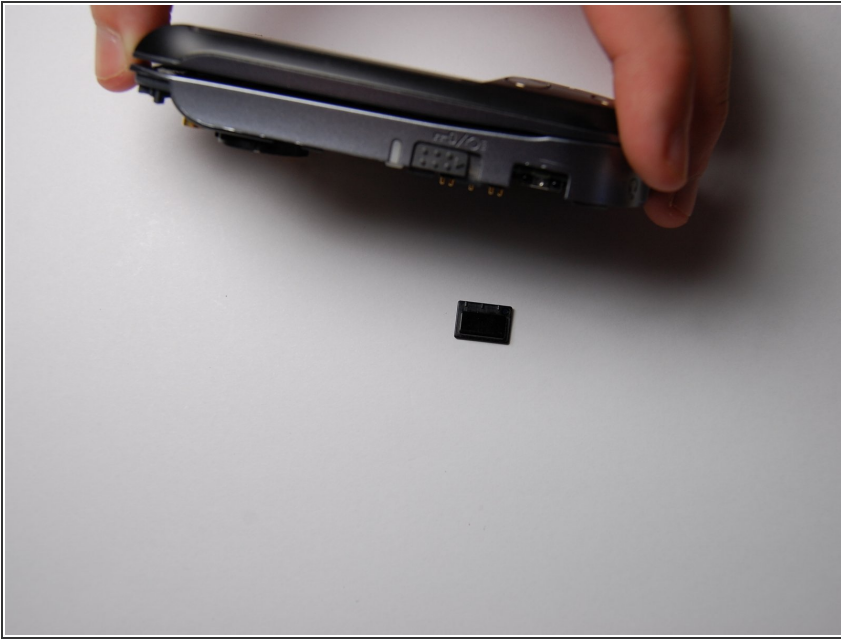
- Remove microphone cover using a plastic opening tool.

Step 6



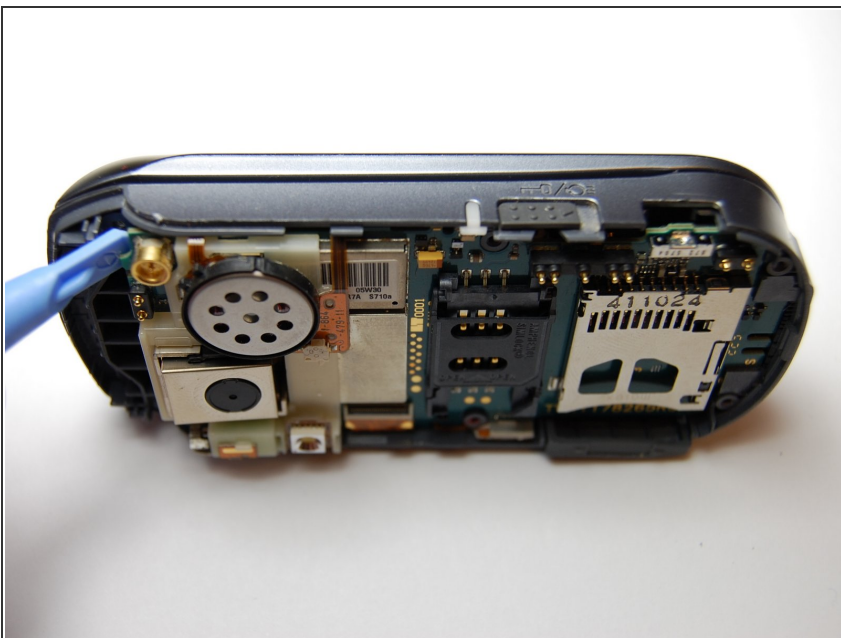
- Remove the two 6mm screws on the front of the phone beneath the microphone cover.

Step 7



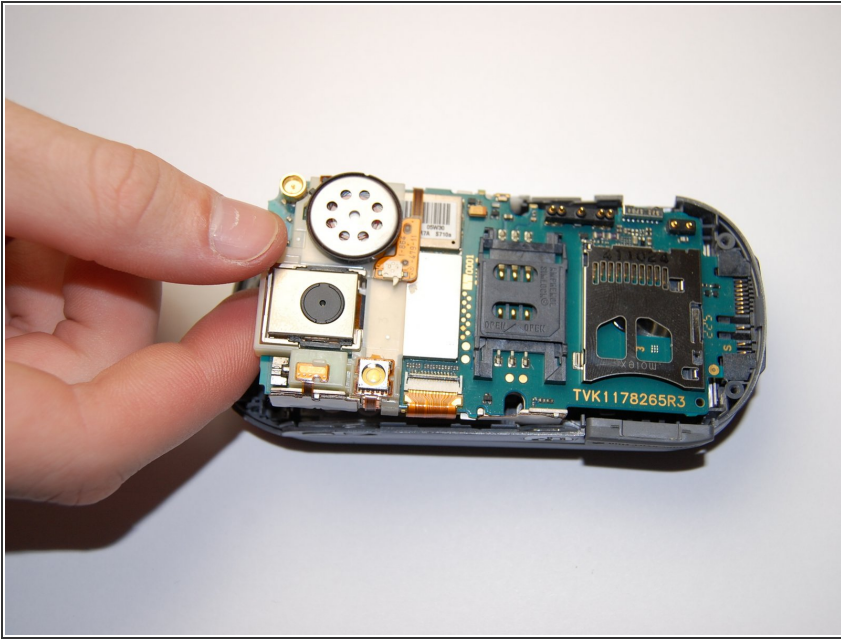
- Remove the black plastic piece on the side.
- This will allow for easier access while prying.

Step 8



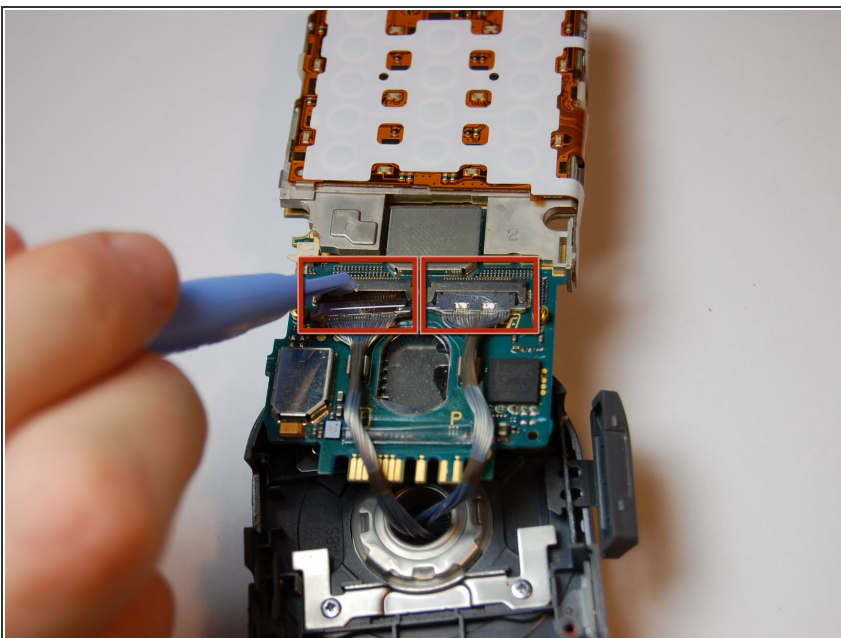
- Use the plastic prying tool to loosen the motherboard from the phone.

Step 9



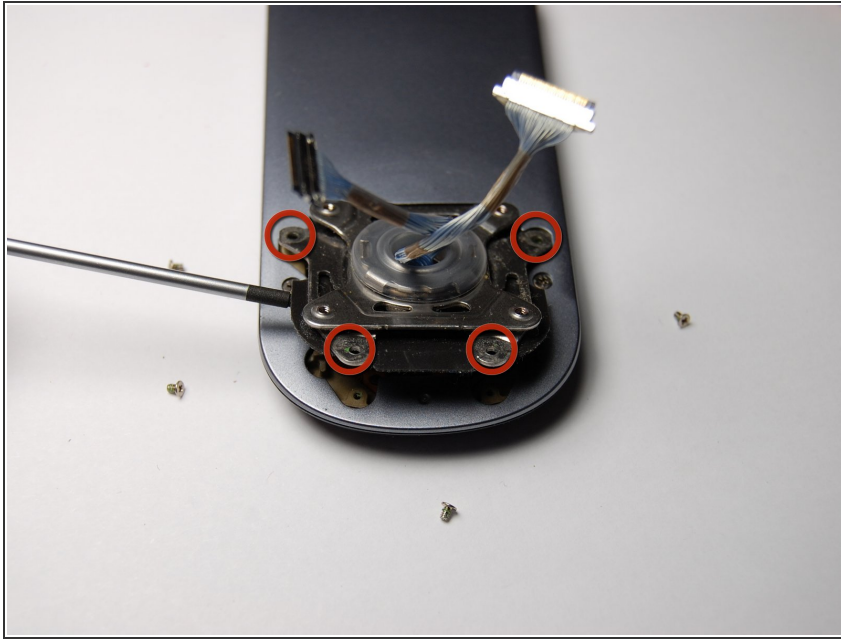
- Lift the motherboard out with your fingers once it is loose.
- ⓘ Pull slowly. This will require some force.

Step 10



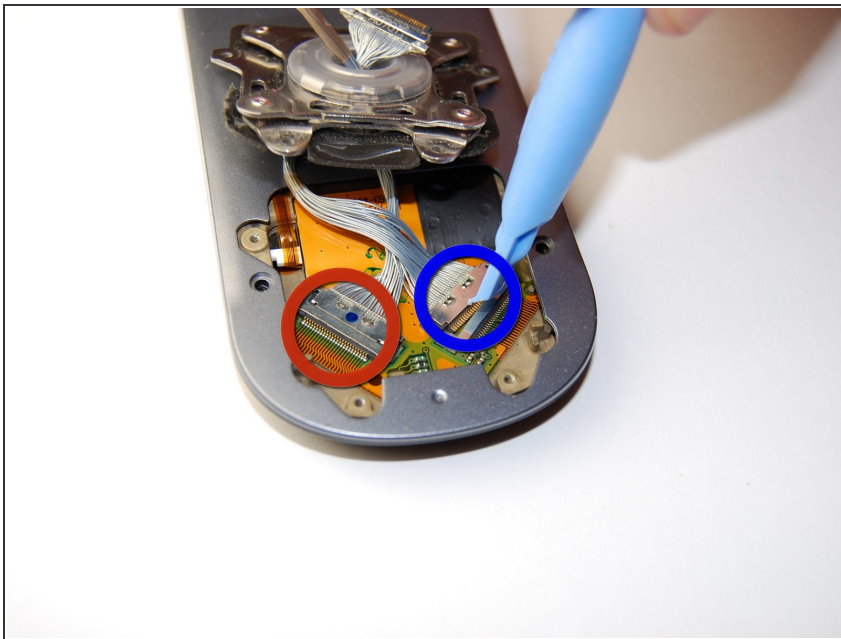
- Remove the two cable connectors using a plastic opening tool.
- ⓘ Mark the orientation and port of each cable before detaching them. The connectors are symmetrical, so this is essential for reassembly.
- Place the motherboard aside in a safe location.

Step 11



- On the rotational assembly.
 - Unscrew the four 3mm screws
 - Unscrew the two 2.3mm screws
- ⓘ Remember to keep the screws grouped away from the other screws in the device.
- Lift this assembly off of the phone to allow access to the other half of the device.

Step 12



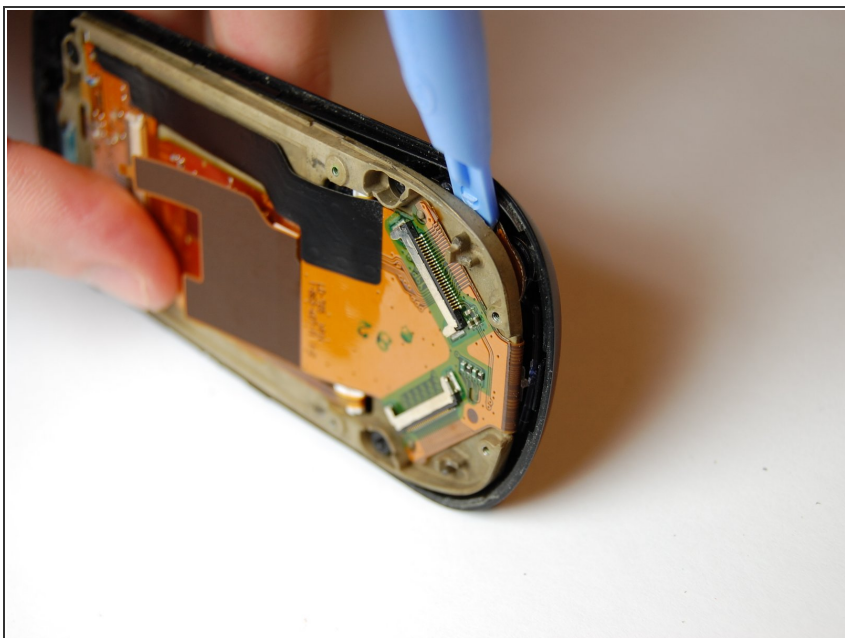
- Detach the cable connectors on the other end of the cables using a plastic opening tool.
- ⓘ Remember to record the orientation and location of each connector.

Step 13



- Remove the plastic cover on the back of the phone using a plastic opening tool.
- Remove the two 6mm screws beneath this cover.
- Also remove the two 6mm screws near the top of the phone.

Step 14



- Pry away the screen assembly from the main case using a plastic opening tool.

Step 15



- With face plate and LCD exposed, replace the existing cracked LCD with a new LCD if desired.
- ⓘ Be sure to test and make sure the detachable connections are arranged correctly.

Step 16 — Main Interface Buttons



- Remove the button and pad assembly as shown.
- If desired, these items can now be cleaned or replaced.

To reassemble your device, follow these instructions in reverse order.