



Sony Ericsson s710a Teardown

This guide will walk you through the teardown of the Sony Ericsson s710a cellular phone.

Written By: Alexander



INTRODUCTION

The Sony Ericsson s710a is a camera phone with all of the features expected of a phone in the mid '00's.



TOOLS:

- [Phillips #00 Screwdriver](#) (1)
 - [iFixit Opening Tools](#) (1)
-

Step 1 — Battery



- Remove the back cover by sliding it off.

Step 2



- Once the back cover is removed, pull out the battery using your finger as shown.

Step 3



- The battery can now be replaced if desired.
- ⓘ The battery is a 780 mAh rechargeable Lithium Ion battery.

Step 4 — Sony Ericsson s710a Teardown



- Remove the four 6mm screws behind the battery.

Step 5



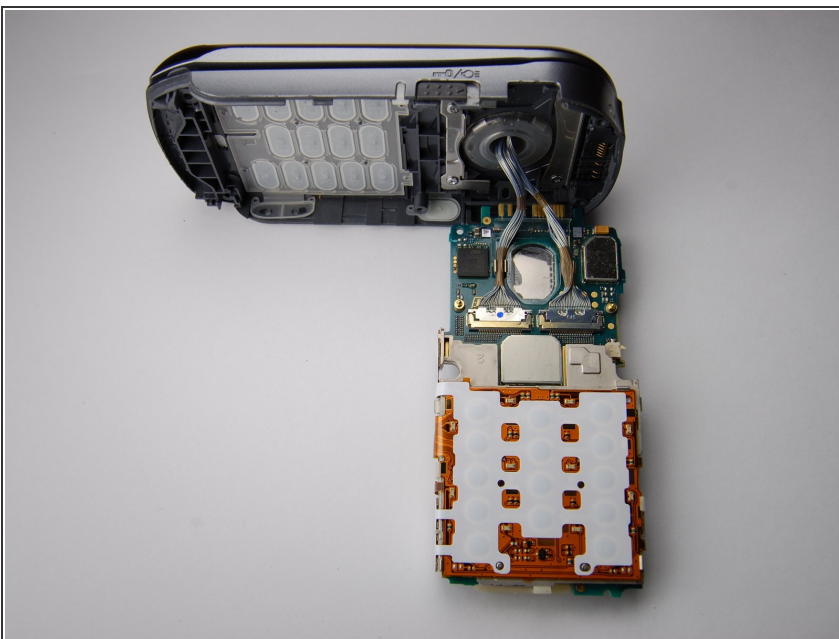
- Remove plastic piece near the base of the keypad.
 - ⓘ This will require prying it off with a plastic opening tool and breaking the seal with the glue. Unfortunately there is no way around this.
- Then remove the two 6mm screws beneath the plastic cover with a Phillips head screw driver.
- Now you are ready to remove the plastic back cover.

Step 6



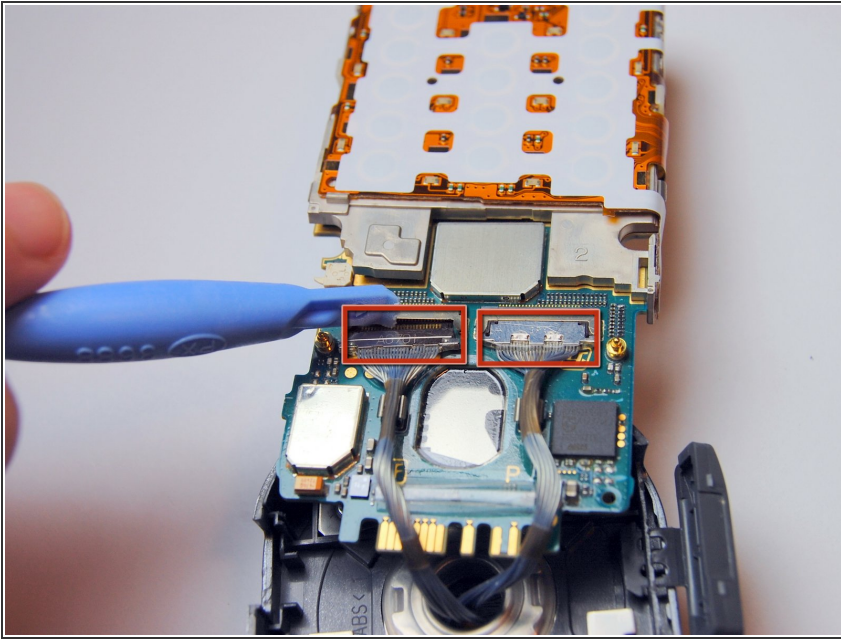
- Use the plastic opening tool to pry off the back cover of the phone. This will require a bit of careful work.
- You should start prying the back cover from the SD card slot.
- Alternate prying the back cover on each side until it pops off.

Step 7



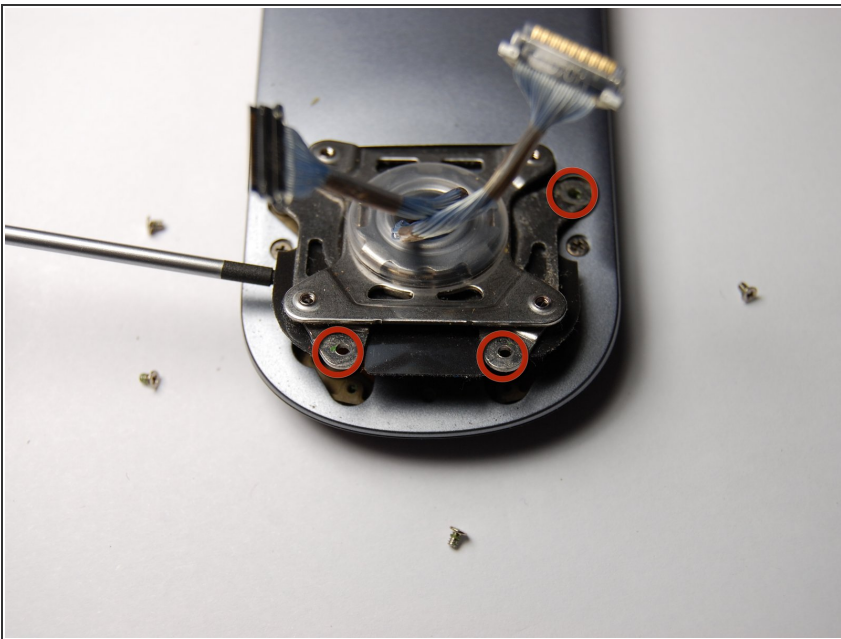
- Use the plastic opening tool to carefully pry out the circuit board once you have removed the back cover.

Step 8



- Remove the LCD cable connectors coming from through the hinge hole with a flat head screw driver.
- ❗ **IMPORTANT:** be sure to record which port each cable was in and the orientation they were plugged into each socket.
- Now the two parts of the phone are separated.

Step 9



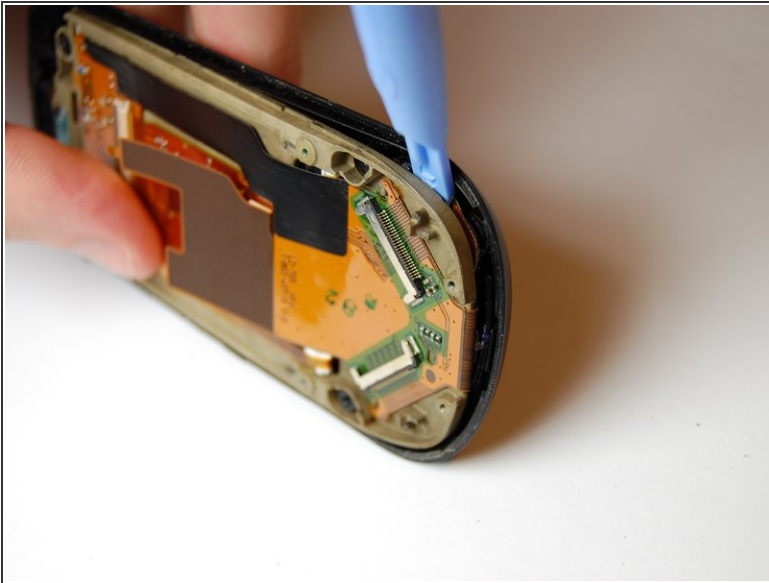
- On the non-camera side of the phone, remove the four 3mm screws and two 2.3mm screws holding down the twist-structure.
- When you lift this off, you will need to disconnect the cables from the other side using the same method as in step 5.
- Again, be sure to record which port each cable was in and the orientation they were plugged into each socket.

Step 10



- Remove the plastic piece near the bottom of this side of the phone with the plastic opening tool. This will give you access to two additional screws.
- Remember you will have to break the glue seal, but that is alright.
- Remove the four visible 6mm screws and then remove the back cover.

Step 11



- In order to remove the LCD screen, use the plastic opening tool to pry the plastic piece from the LCD.
- Perform this step carefully to avoid scratching the glass screen.

Step 12



- In this picture, you can see all of the parts in the non-camera side of the phone.
- Interestingly, the four control buttons are all one piece

Step 13



- This phone has an array of capabilities:
 - Bluetooth
 - Megapixel Camera
 - MP3 capable
 - Messaging options
- This photograph shows the final result of a complete teardown.

To reassemble your device, follow these instructions in reverse order.