



Sony Ericsson z300 Back Dark Grey Case Replacement

Remove the case in order to access the Motherboard.

Written By: Alex Serventi



INTRODUCTION

This guide will show you how to remove the Dark Grey case that allows you access to the Motherboard.



TOOLS:

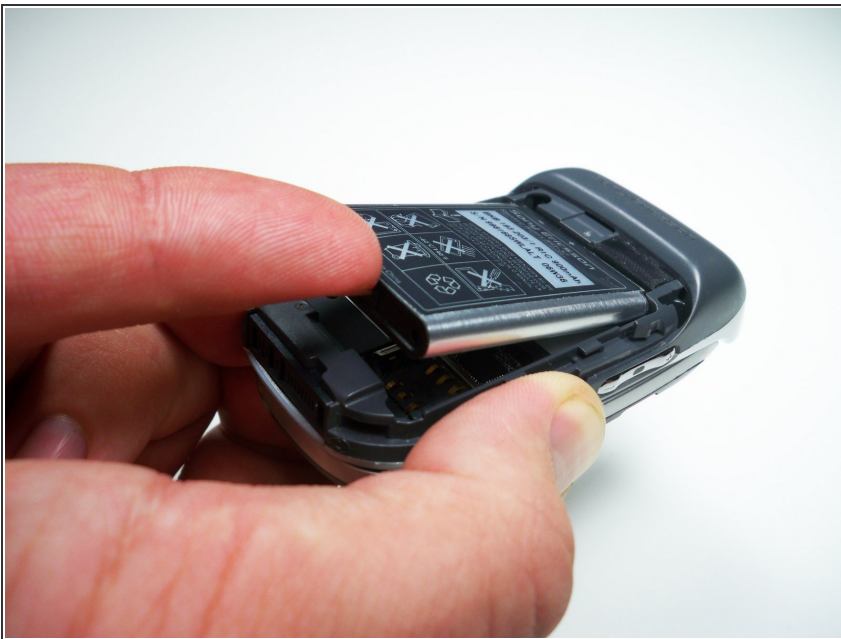
- [T5 Torx Screwdriver](#) (1)
-

Step 1 — Back Phone Cover



- To remove the back cover, use your thumb to press down on the center of case and slide it off.

Step 2 — Battery



- Using a fingernail lift the battery out of the phone.

Step 3 — Sim Card



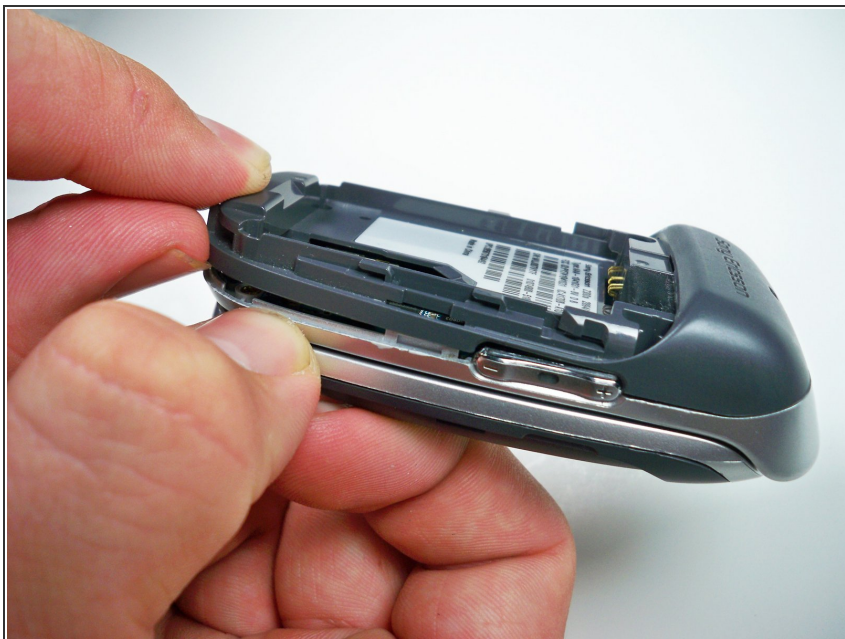
- Slide the sim card out with your thumb.

Step 4 — Back Dark Grey Case



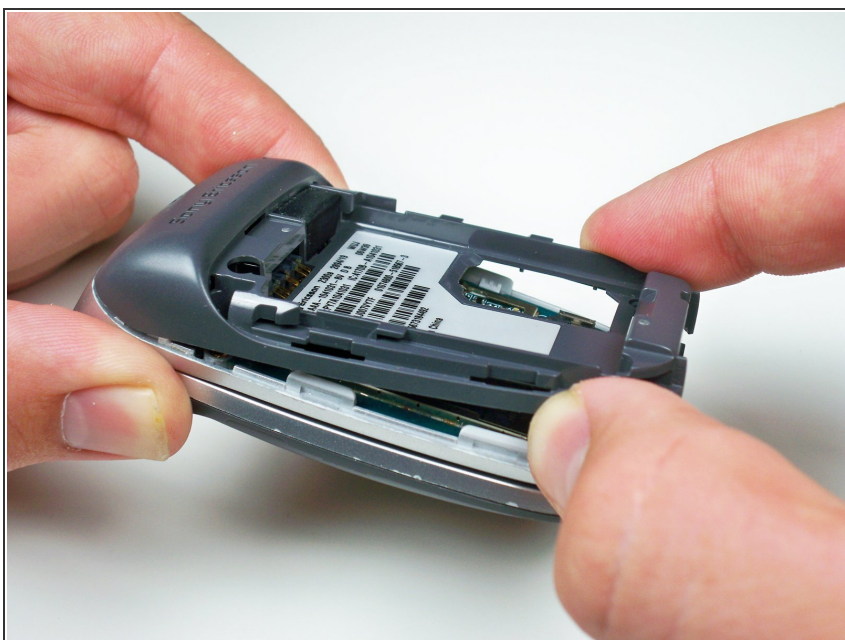
- To remove the back case first remove the four screws shown with a T5 Torx screwdriver

Step 5



- Using your fingernail lift up the side of the casing around the bottom of the phone to release all five of the clips.

Step 6



- Lift up towards the bottom and slide the case off.

To reassemble your device, follow these instructions in reverse order.