



# Sony FDL-220R Watchman Battery and Battery Contacts Replacement

Batteries can cause corrosion if left in a device for long periods of time, and this can cause the device to not work properly. This guide will show you how to deal with battery maintenance.

Written By: Sam Putnam



## INTRODUCTION

This guide will outline how to replace the Sony FDL-220R Watchman batteries and clean the battery contacts if they are corroded. Steps include basic disassembly of the Sony FDL-220R Watchman, and tools include a Phillips #00 Screwdriver and a solution of warm water and baking soda.



### TOOLS:

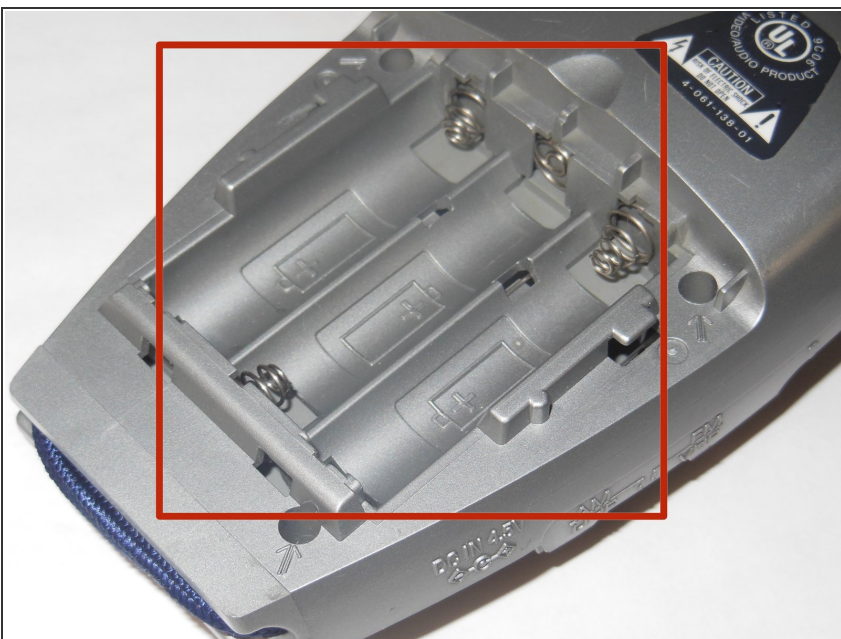
- [Phillips #00 Screwdriver](#) (1)
  - [Detailing Brush](#) (1)
  - [Baking Soda](#) (1)
-

## Step 1 — Remove battery cover and batteries



- Press down on the textured area and push towards the bottom of the device.
- Gently remove the battery cover.
- Remove the three AA batteries.

## Step 2 — Inspect battery contacts in battery compartment



- Inspect battery contacts for any signs of damage.
- Clean battery contacts with a solution of warm water and baking soda if there is corrosion.

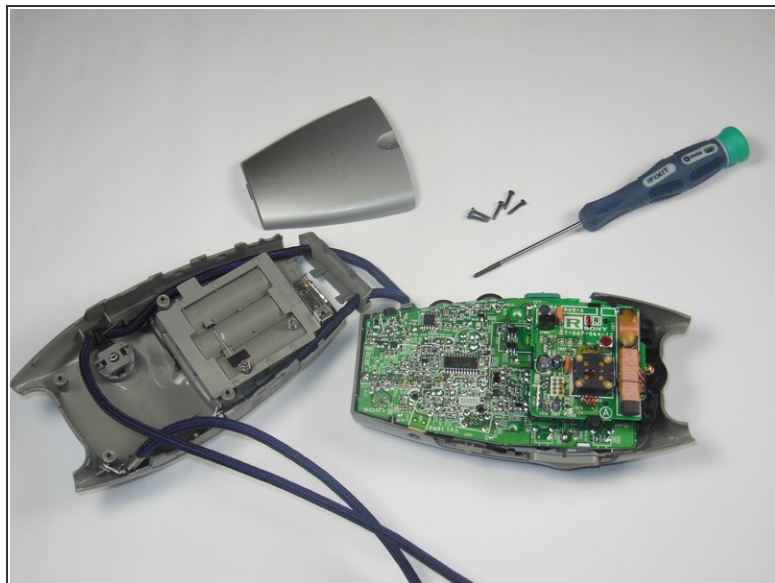
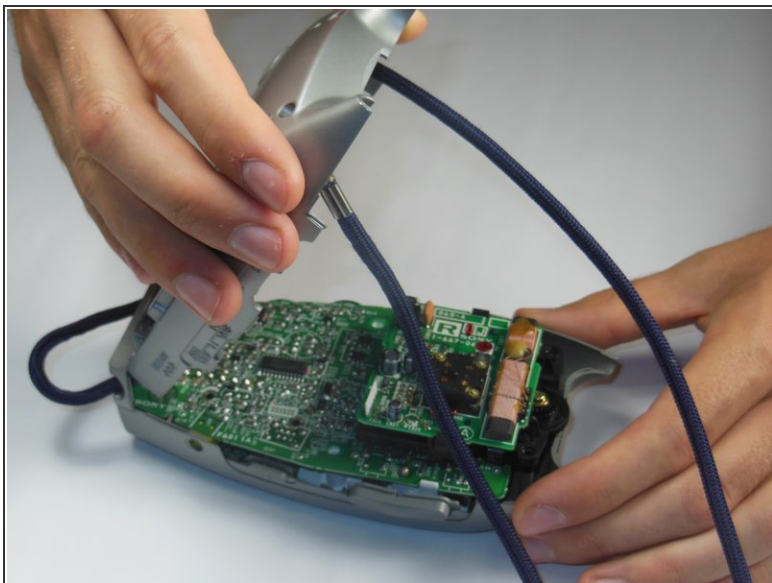
### Step 3 — Remove screws




- Locate the five 5x11mm screws surrounding the battery compartment.
- Remove screws with a Phillips #00 screwdriver.

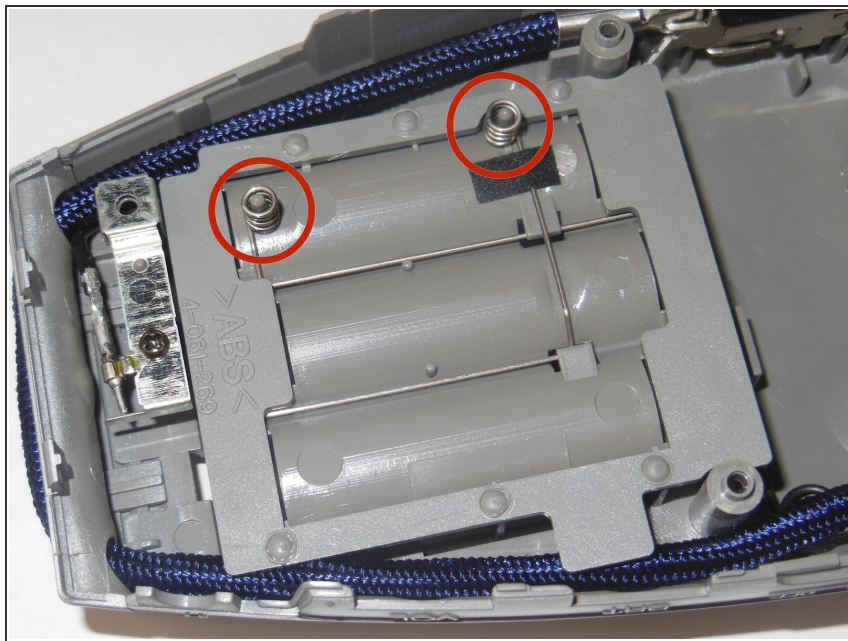


## Step 4 — Remove back casing



- Grasp the entire back half of the Watchman's casing.
  - Snap off casing from the bottom of the device.
  - Gently pull off entire back casing.
-  Buttons may fall out upon opening casing. See the [button replacement guide](#) to fix buttons.

## Step 5 — Inspect battery contacts on inside of back cover



- Inspect the two small springs on the back of the battery compartment.
- Clean contacts with a solution of warm water and baking soda if there is corrosion.

To reassemble your device, follow these instructions in reverse order.