



Sony FDL-220R Watchman Speaker Replacement

A bad mono-speaker can lead to distorted or no audio on the Sony FDL-220R Watchman. This guide will show you how to replace the mono speaker in order to fix the device's sound.

Written By: Sam Putnam



INTRODUCTION

This guide will outline how to replace the Sony FDL-220R Watchman mono-speaker. Steps include a thorough disassembly of the Sony FDL-220R Watchman, and tools include a Phillips #00 Screwdriver, soldering station, and tweezers.

Knowledge of how to solder a basic through-hole contact is required.



TOOLS:

- [Phillips #00 Screwdriver](#) (1)
 - [Tweezers](#) (1)
 - [Soldering Iron](#) (1)
-

Step 1 — Remove battery cover and batteries



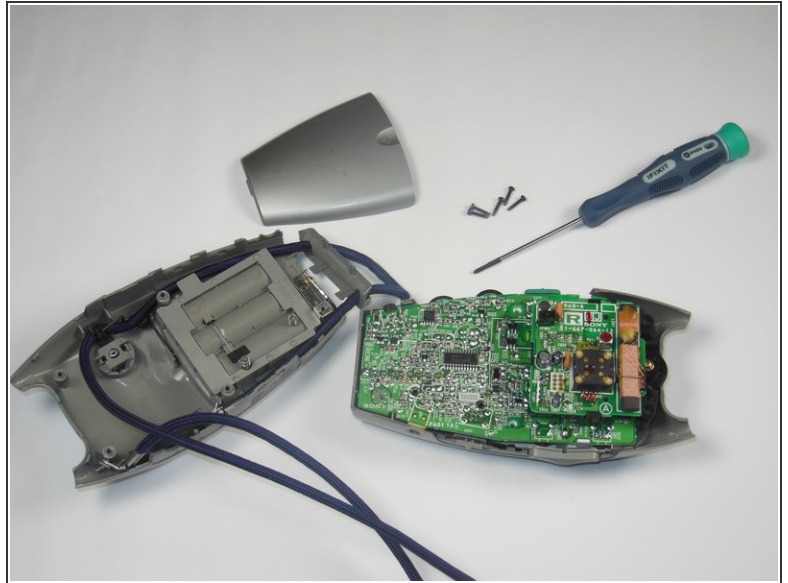
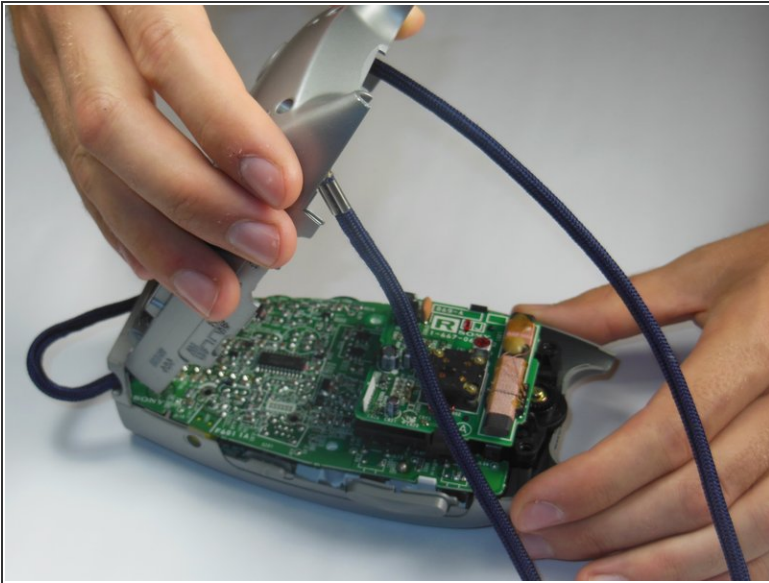
- Press down on the textured area and push toward the bottom of the device.
- Gently remove the battery cover.
- Remove the three AA batteries.


Step 2 — Remove screws



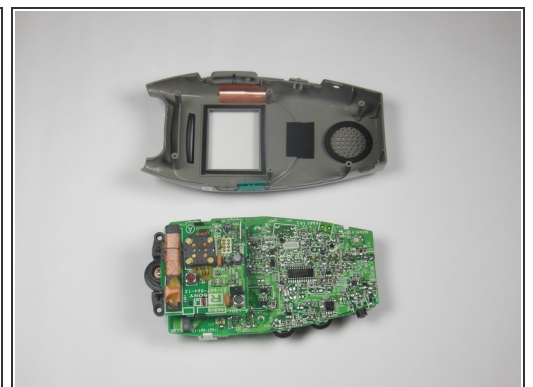
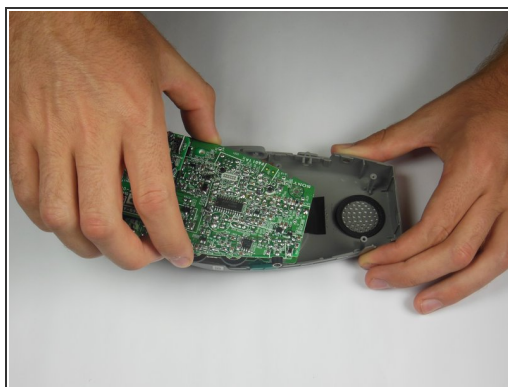
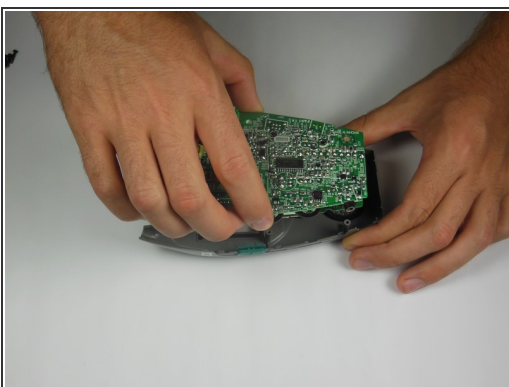
- Locate the five 5x11mm screws surrounding the battery compartment.
- Remove screws with a Phillips #00 screwdriver.

Step 3 — Remove back casing



- Grasp the entire back half of the Watchman's casing.
 - Snap off the casing from the bottom of the device.
 - Gently pull off entire back casing.
-  Buttons may fall out upon opening casing. See the [button replacement guide](#) to fix buttons.

Step 4 — Remove circuit board



- Carefully grasp the entire circuit board.
- Pull the circuit board off of the device's plastic casing.

Step 5 — Remove speaker



- Locate the mono-speaker on the device.
 - Locate the two through-hole contacts to the right of the speaker.
 - Touch a soldering iron to the two through-hole contacts.
 - While the solder is hot, pull down on the wire with tweezers.
- i** It may be helpful to remove excess solder with a solder wick or sucker.

To reassemble your device, follow these instructions in reverse order.