



Sony H.ear On 2 Battery Replacement

Use this guide to replace the battery in your Sony WH-H900N H.ear On 2 Wireless Noise-Canceling Headphones.

Written By: Braden Michelson



INTRODUCTION

Learn how to replace the battery in your Sony H.ear On 2 headphones. The battery is located in the right ear cup and the replacement is not difficult.

Note: Make sure your battery is fully discharged if possible before you replace it. A lithium-ion battery can potentially spark and cause a fire if punctured during the replacement.



TOOLS:

- [iFixit Opening Tools](#) (1)
 - [JIS #00 Screwdriver](#) (1)
-

Step 1 — Battery



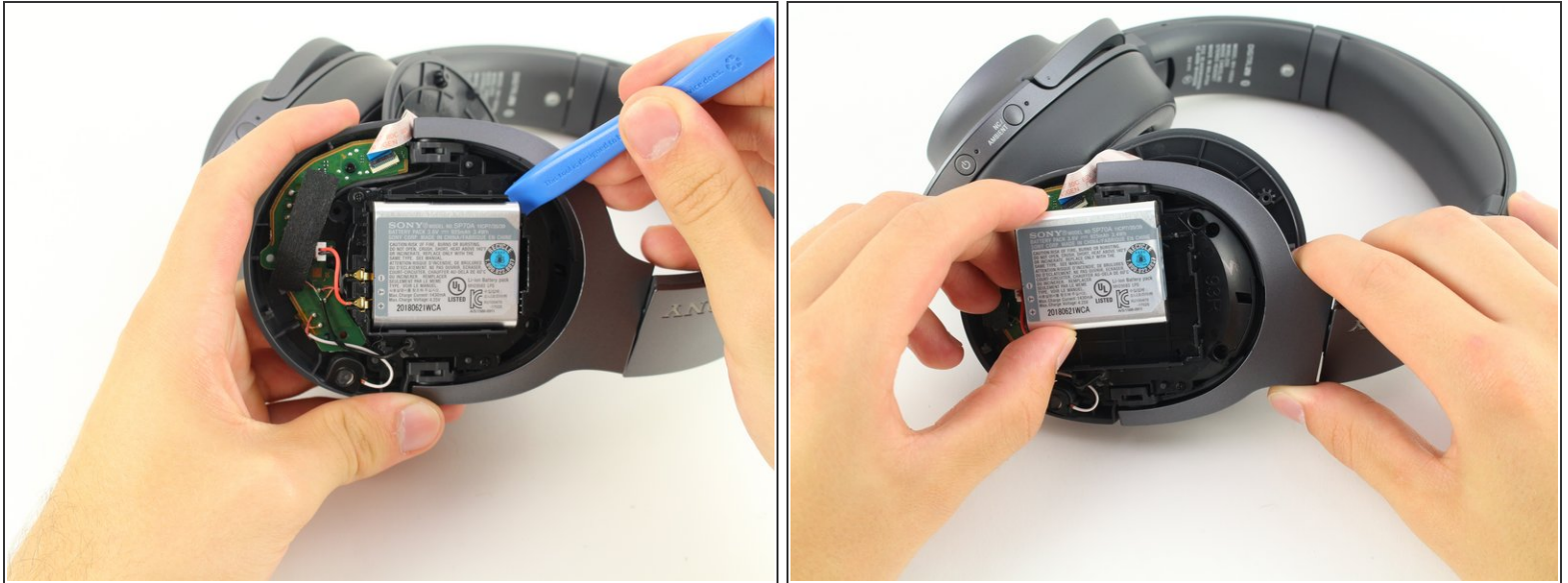
- Start by inserting the iFixit plastic opening tool into the crease between the hard plastic and the ear cup on the right side of the headphones. Then you should gently apply pressure until it separates.
- ⓘ You may need to repeat the process on the back using your hands or the iFixit plastic opening tool until it separates completely.
- ⚠ This may take a considerable amount of pressure but do not force it.

Step 2



- Use the JIS #00 Screwdriver to remove the five 6.4 mm screws holding the back plastic cover in place.
 - Then, turn the ear cup over and carefully lift the plastic cover off to reveal the internal components of the right ear cup.
- ⚠ There is a ribbon cable connecting the plastic cover to the battery housing on the headphones. Be wary not to damage this cable during disassembly by lifting the cap forcefully.

Step 3



- Using the iFixit opening tools, gently separate the battery from the housing
 - ⚠ The ribbon cable connecting the plastic cover to the battery housing is short, so make sure to move the plastic cover out of the way safely
 - ⓘ The battery is adhered to the housing with epoxy. When removing the battery be aware that separation may require a bit of force.
 - ⚠ Be careful not to damage the battery contacts during removal.

To reassemble your device, follow these instructions in reverse order.