



Sony Handycam CX260V Camera Lens Replacement

This guide will allow people to be able to replace the camera lens to the CX260V. The guide gives detailed instructions on how to take apart the camera to access the main internal problems.

Written By: Dominic Franklin



INTRODUCTION

This guide will provide accurate steps in replacing the Camera Lens for the CX260V.



TOOLS:

- [Phillips #00 Screwdriver](#) (1)
 - [Tweezers](#) (1)
-

Step 1 — Housing



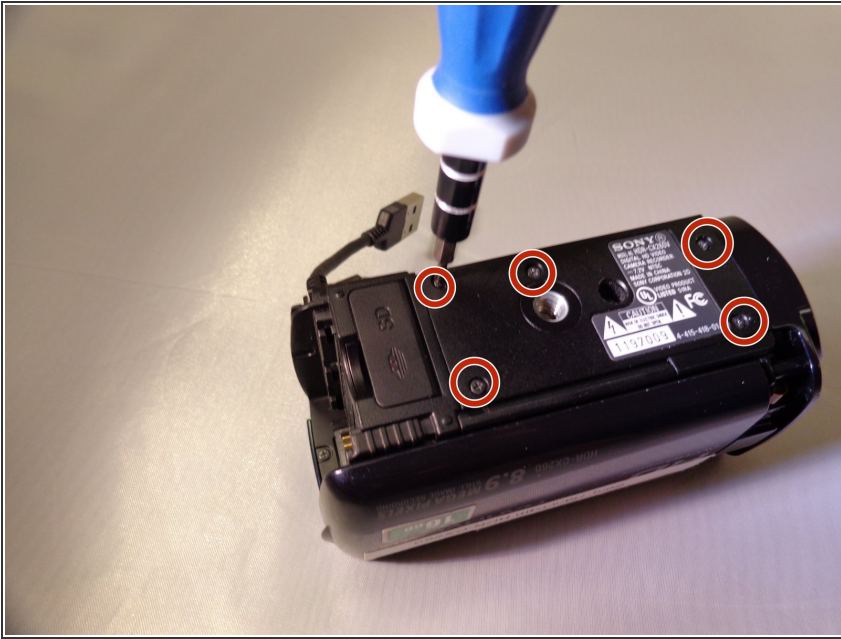
- Set up the camera in a clear, open, clean and professional work space. Make sure you have all the necessary tools.

Step 2



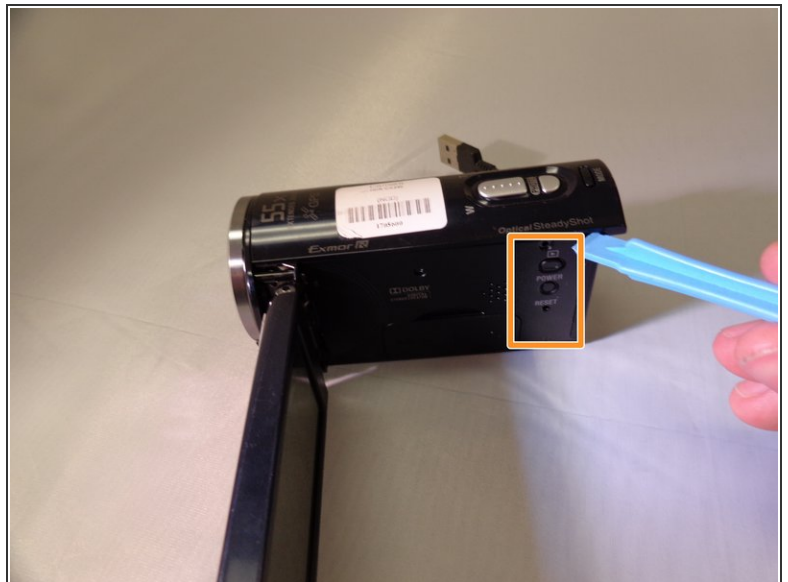
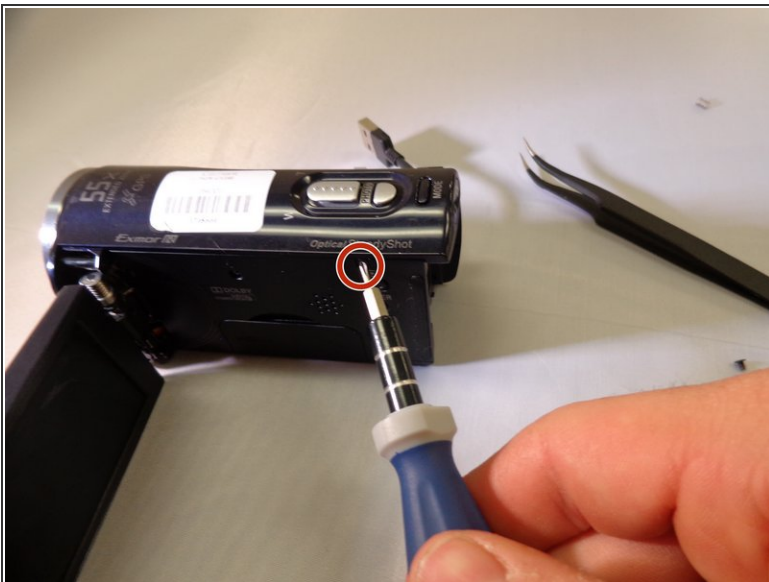
- Using the Phillips Head #00 size screwdriver, unscrew the two 5 millimeter screws located on the top left and bottom of the join attaching LCD screen to the device.
- Using the same size screw driver unscrew the 3 millimeter screw located in the middle of the joint assembly; attaching the LCD screen to the device.
- Next, unscrew the two five millimeter screws located on the left interface of the camera that the LCD screen rests on. (Should be located where the USB jacks are.)
- Locate the battery assembly, on the top of the camera and unscrew three screws; two 5 millimeter screws and one 3 millimeter.

Step 3



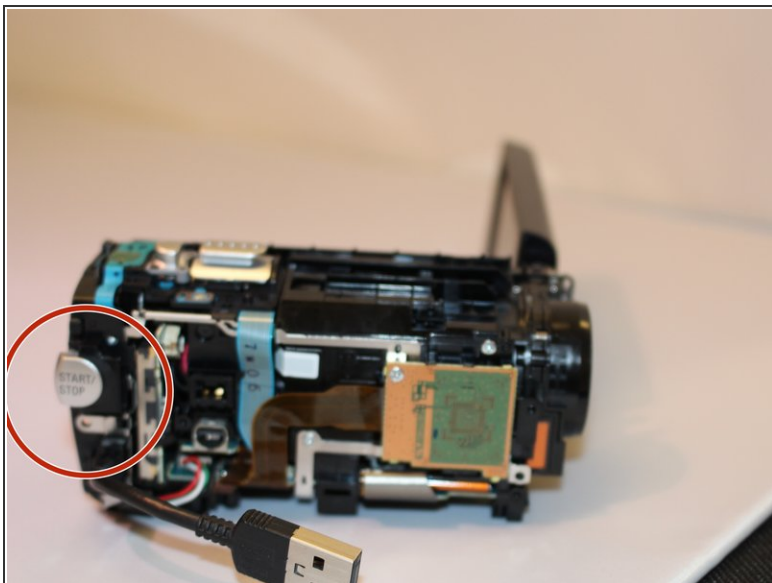
- On the bottom of the camera unscrew all 5 five millimeter screws from the bottom panel.
- ⓘ This step will remove the bottom panel covering the internal motherboard.

Step 4



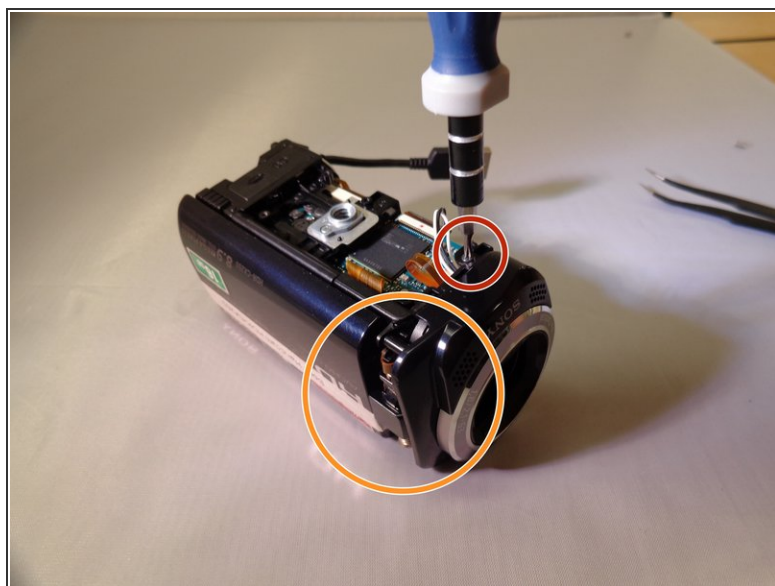
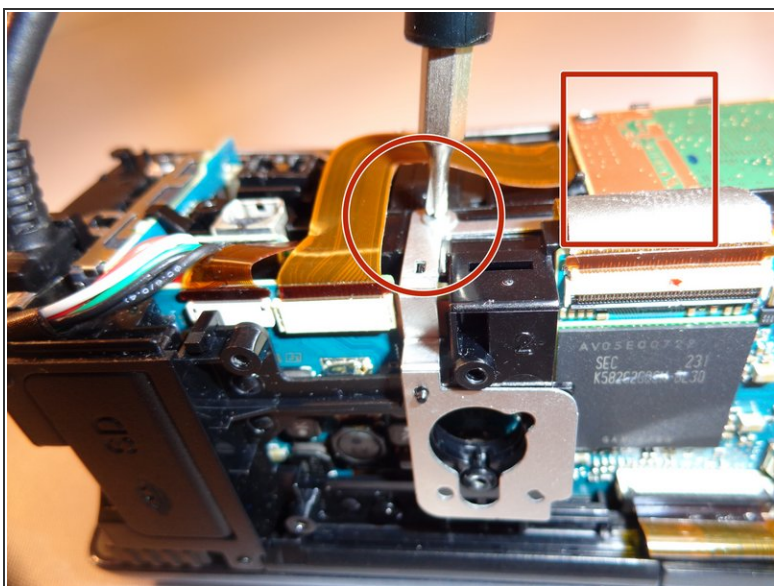
- Underneath the handle unscrew the two 5 millimeter screws.
- Using the spudger tool, remove the cover for the recording buttons.
- ⓘ This should remove the small panel located over the recording buttons.

Step 5



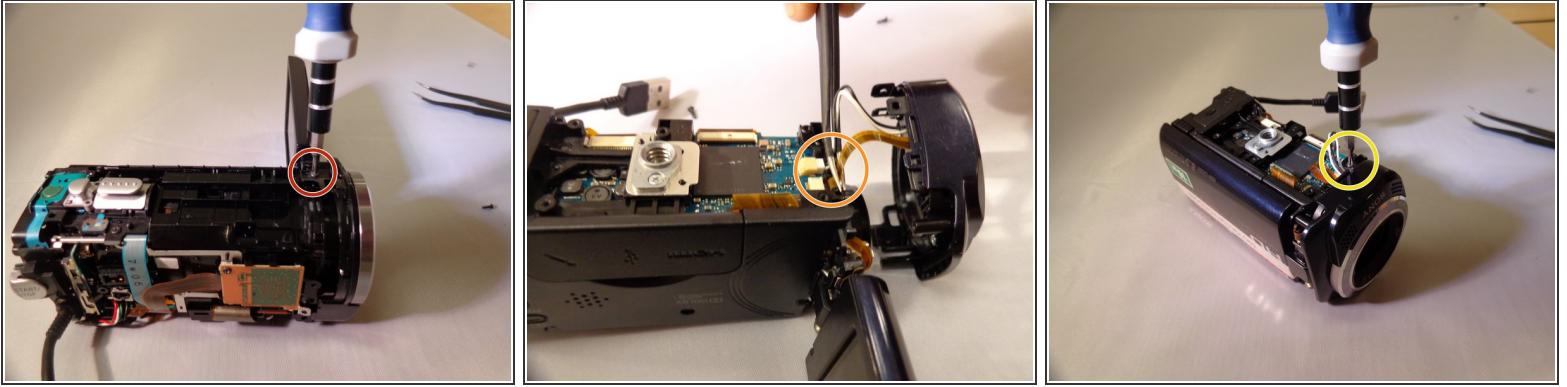
- Where the recording button is located, unscrew one 5 millimeter screw left of the "start, stop, record" button.
 - ⓘ This will remove the entire right side panel where the handle is located.
- Unscrew one 5 millimeter screw located by the lens.
 - ⓘ This unattaches the leather strap assembly/handle completely from the device.

Step 6



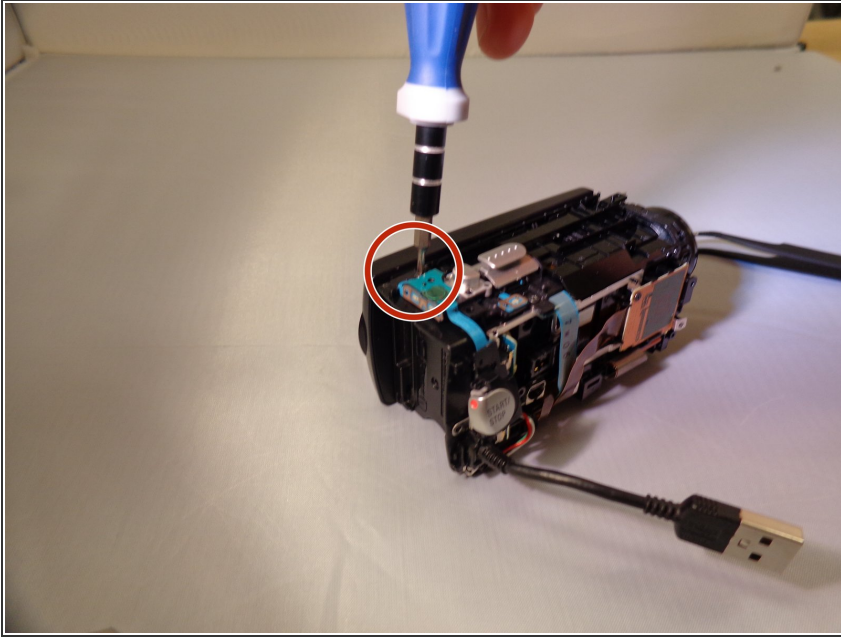
- Unscrew four screws on the front right of the camera, where the orange motherboard is located. There are three black 5 millimeter screws and one silver 4 millimeter screw.
- ⓘ The silver screw is located on the front right of the camera, and is attached to the main panel of the camera.
- Use the spudger tool to remove the cover over the LCD joint.

Step 7



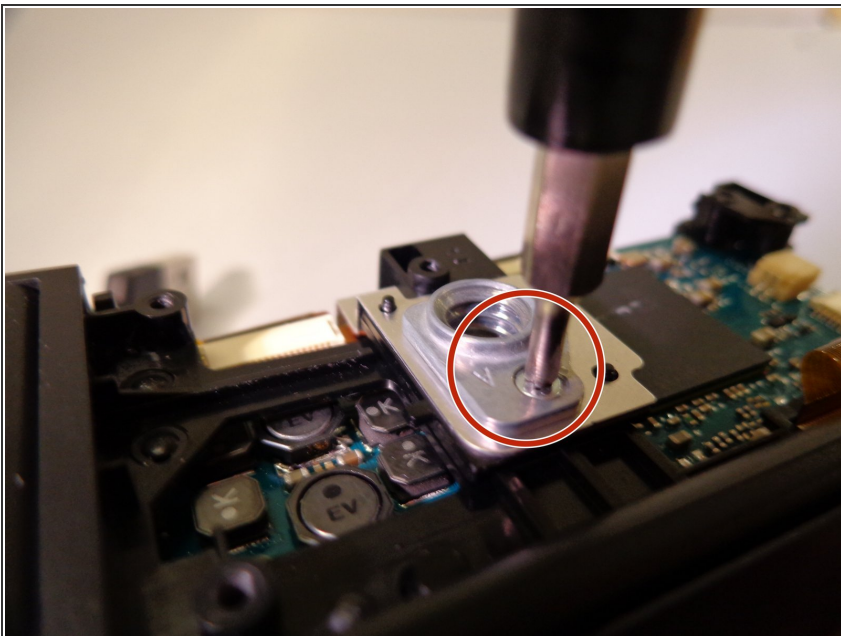
- Using the PH #00 size screw driver, unscrew a 5 millimeter screw located on the top left near the lens of the camera.
- Using a pair of tweezers, carefully disassemble the two wires connected to the bottom motherboard portion of the camera.
 - One white & black wire and one flat yellow wire are connected to the lens pane.
- ⓘ This will fully remove the lense panel.
- Using the screwdriver, locate the three five millimeter screws. Carefully remove the camera lens with your hands or spudger tool.
 - One is located on the bottom of the lens area, and the other two located on the top left and right of the lens area.
- ⓘ There are three springs located underneath the lens. Make sure not to lose them. (The lens is now ready to be replaced carefully.)

Step 8



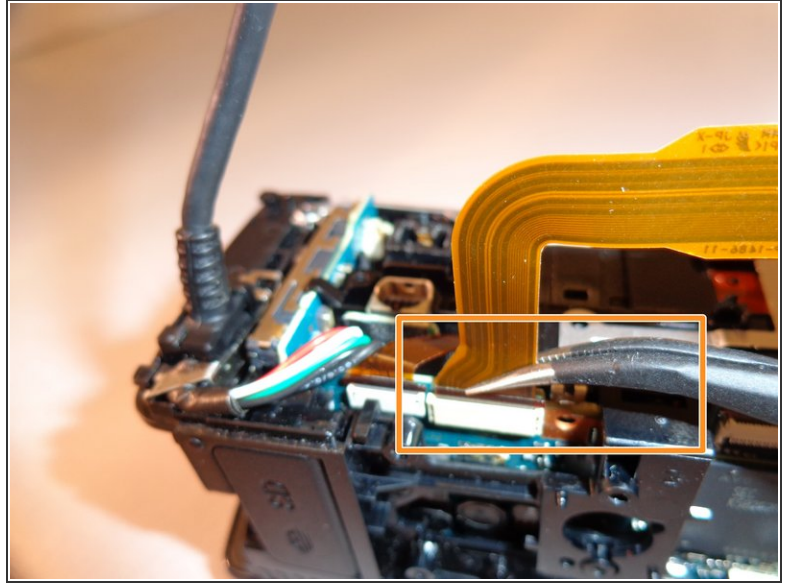
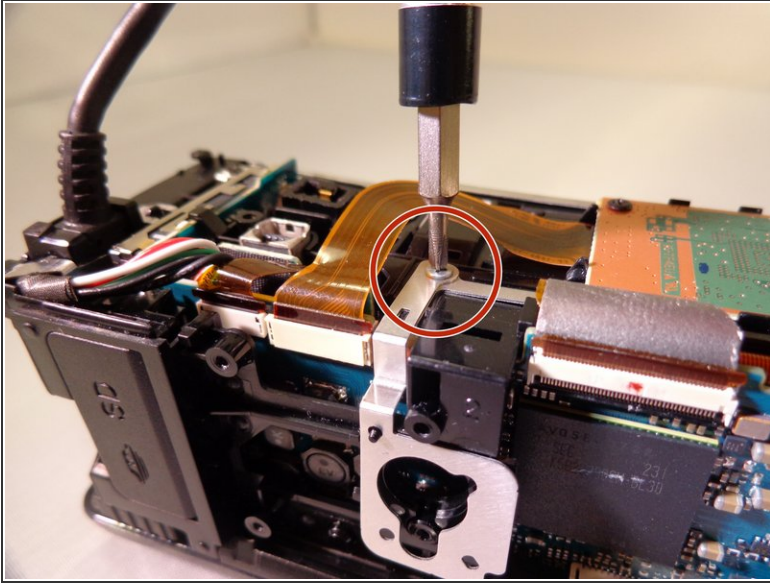
- Located by the zoom & picture control capturing button, unscrew one 5 millimeter screw located near the top, back left section of the camera.
- There are two flat blue wires keeping the buttons connected to the main assembly. Carefully set aside or unplug.
- ⓘ This partially removes the zoom and picture capturing control.

Step 9



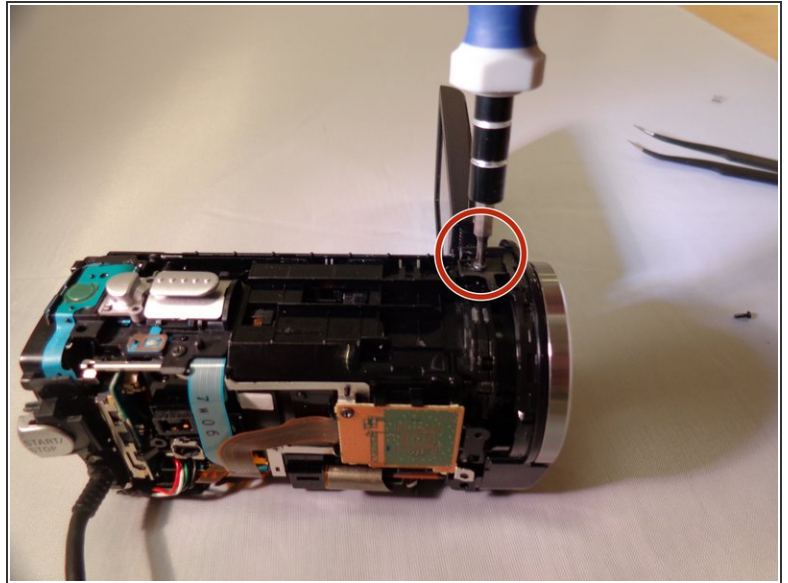
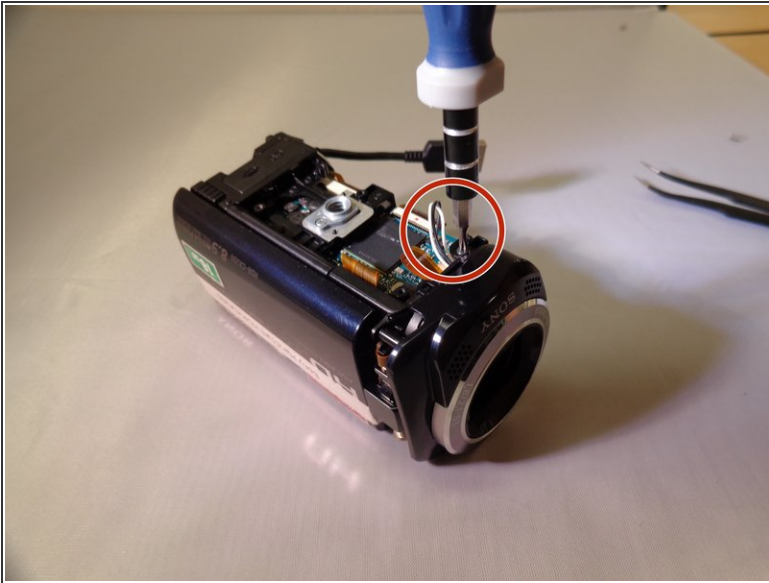
- Located near the tripod mount area, unscrew one silver five millimeter screw.
- ⓘ Tripod mound comes off with mount assembly underneath.

Step 10



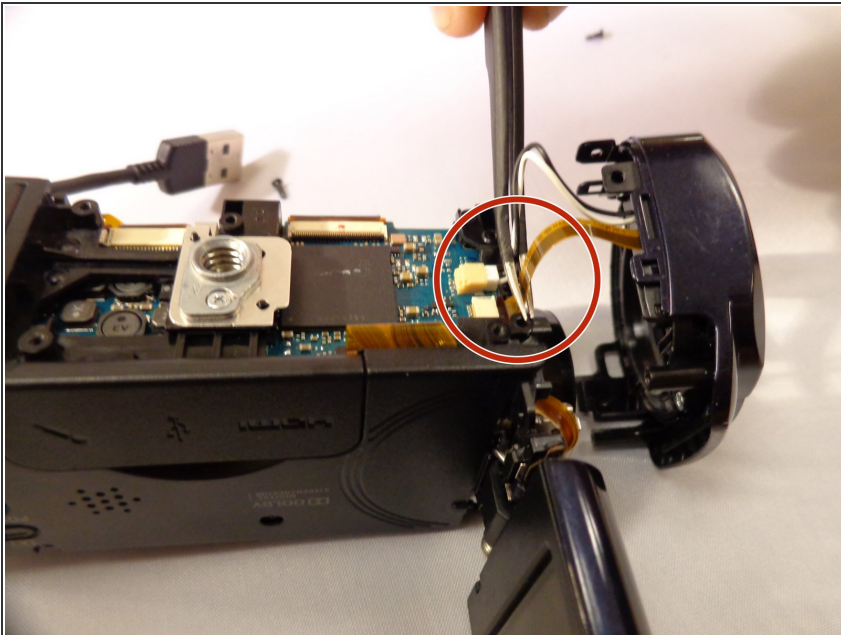
- Unscrew one silver 5 millimeter screw from the front right side of the camera, located where the orange mother board card is.
- Unplug the wire. Underneath will be another silver five millimeter screw.
- Using tweezer, release the clip attaching the main internal system to the main frame on the bottom of the camera. Allows the rest of the camera to be freely taken apart.
- The side panel will have cords running through the frame; unplug these and frame will be removable.

Step 11 — Camera Lens



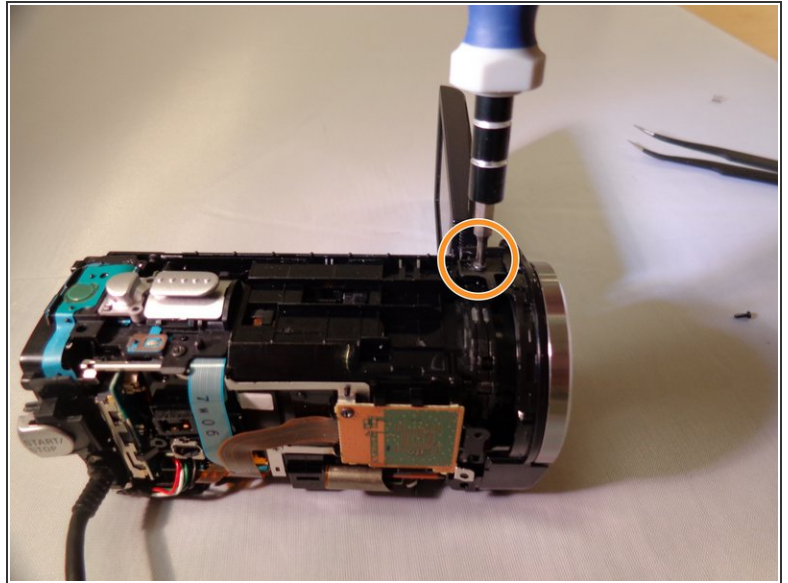
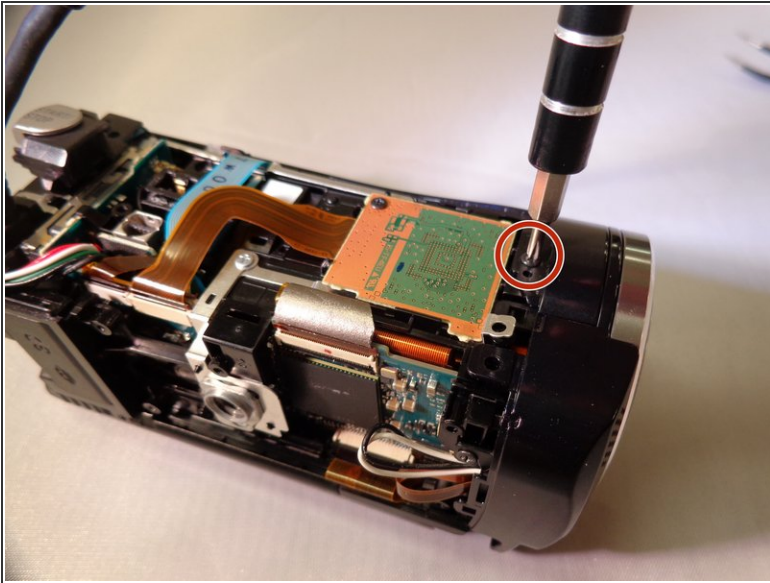
- Using the PH #00 size screw driver, unscrew one 5 millimeter screw located on the top left near the lens of the camera.

Step 12



- Using a pair of tweezers, carefully disassemble the two wires connected to the bottom motherboard portion of the camera.
- ⓘ There is one white & black wire and one flat yellow wire that are connected to the lens panel.

Step 13



- Using the screwdriver, locate the three five millimeter screws.
 - ❗ One is located on the bottom of the lens area, and the other two are located on the top left and right of the lens area.
- Carefully remove the camera lens with your hands or spudger tool.
 - ☑ There are three springs located underneath the lens. (Make sure not to lose them).

To reassemble your device, follow these instructions in reverse order.