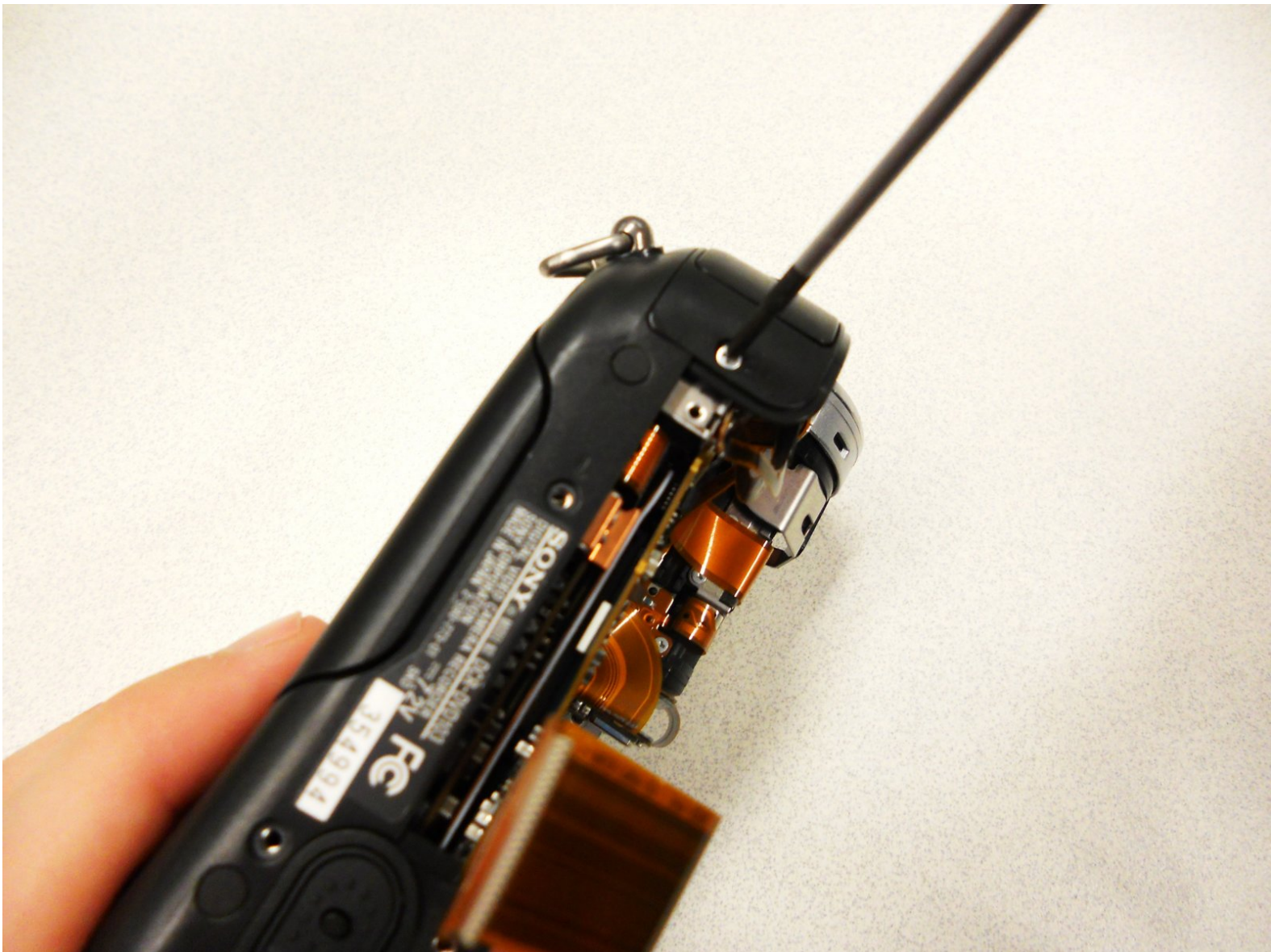




Sony Handycam DCR-DVD103 Lens Replacement

This guide is for the Sony Handycam DCR DVD103 lens in order to remove and replace any broken or malfunctioning parts.

Written By: kaitlin





TOOLS:

- [Phillips #00 Screwdriver](#) (1)
-

Step 1 — Battery



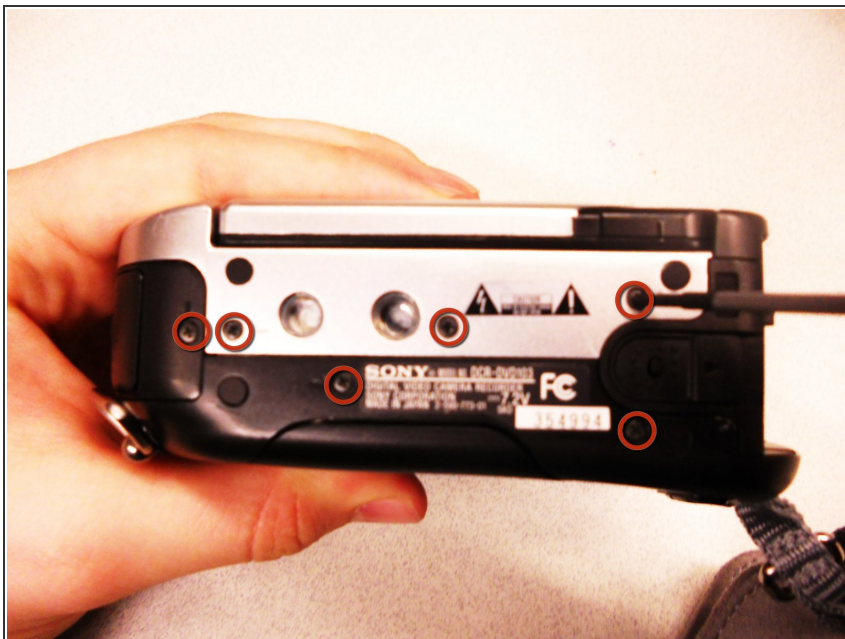
- **Note:** This camera came without a battery, thus all pictures shown will be missing a battery.
- Locate the battery pack which can be found on the back side of the camera below the viewfinder.
- Push in the small button on the bottom of the camera, marked with the red circle, then slide the entire switch forward, marked with the yellow rectangle.

Step 2



- Slide the battery out of the back of the camera.
- The battery can be inserted by sliding it back into place in a similar manner to how it was removed.

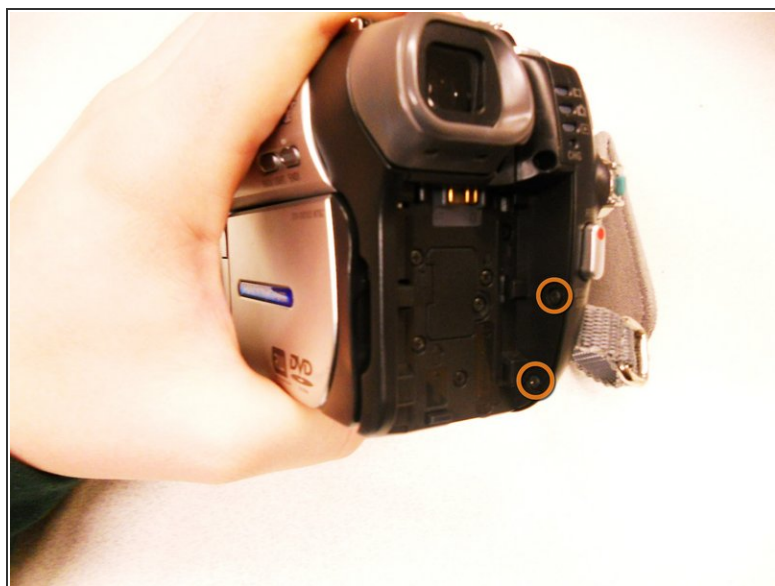
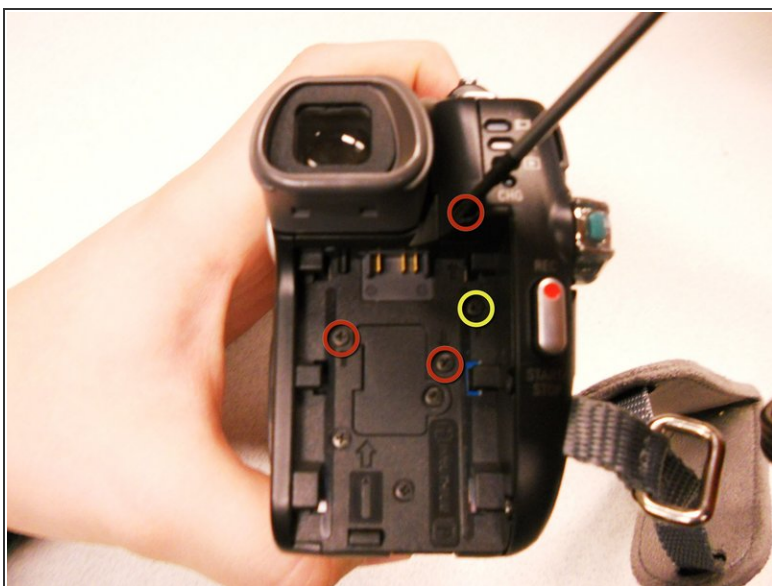
Step 3 — Outer Cover




- Remove the (6) 4.5mm screws from the bottom of the Sony Handycam that are marked with small circles.

- ⓘ Note: You will use the #00 Philips Screwdriver for this part and in all subsequent slides.
- ⓘ Note: Most screws that are meant to be removed are marked with arrows on the camera itself.

Step 4



- Remove (3) 4.5mm screws from underneath the battery. Again they are marked by small arrows.
 - Remove (1) 2.9mm screw from the right corner.
 - Remove (2) 4.5mm screws from the battery right wall.
-  Note: The battery has been removed for these steps.

Step 5



- Remove (1) 4.5mm screw from underneath the output flap on the front of the camera right below the lens.

Step 6



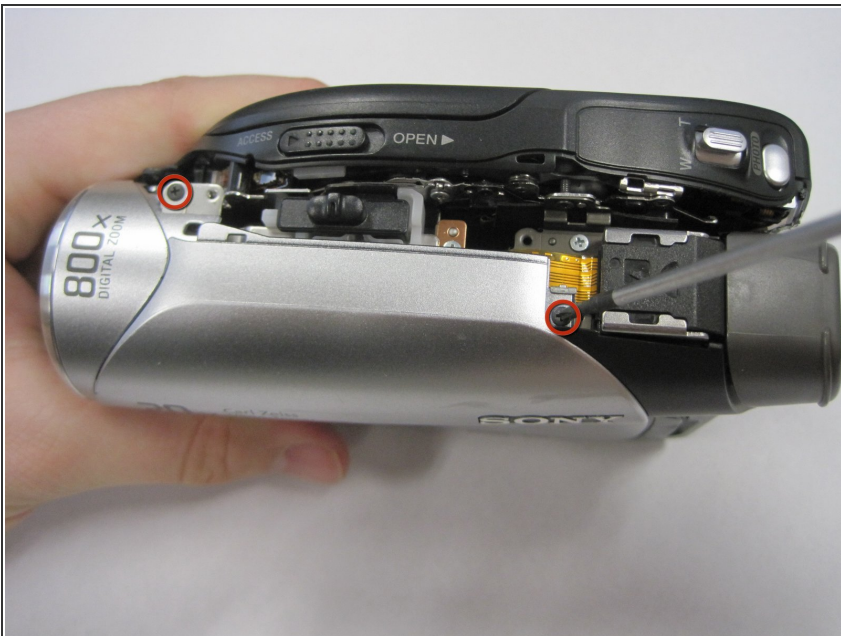
- Remove the (2) 4.5mm screws from the top of the camera that are pointed out with red circles.
- Remove the (1) 4.5 mm screw from the disk side of the camera located next to the lens. This screw is pointed out with a yellow circle.

Step 7



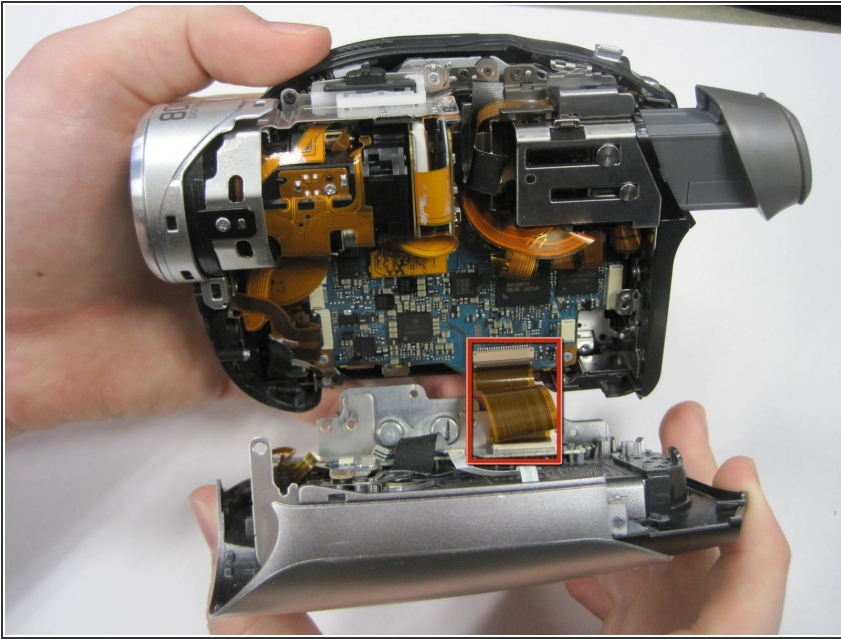
- Extend the gray viewfinder so the black, plastic casing will have room to come off.
- Remove the black plastic casing gently from the top of the camera. Use caution because the plastic pieces are fragile and tend to break easily.

Step 8



- Remove (2) 2.9mm screws from under the black plastic casing that was mentioned in the previous step.

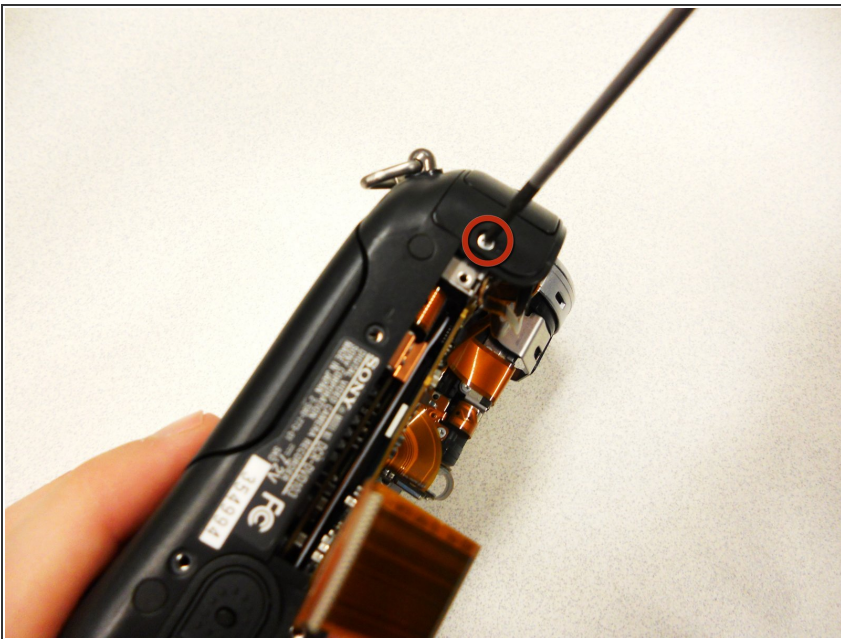
Step 9



⚠ Caution: Carefully pull off the outer silver case along with screen.

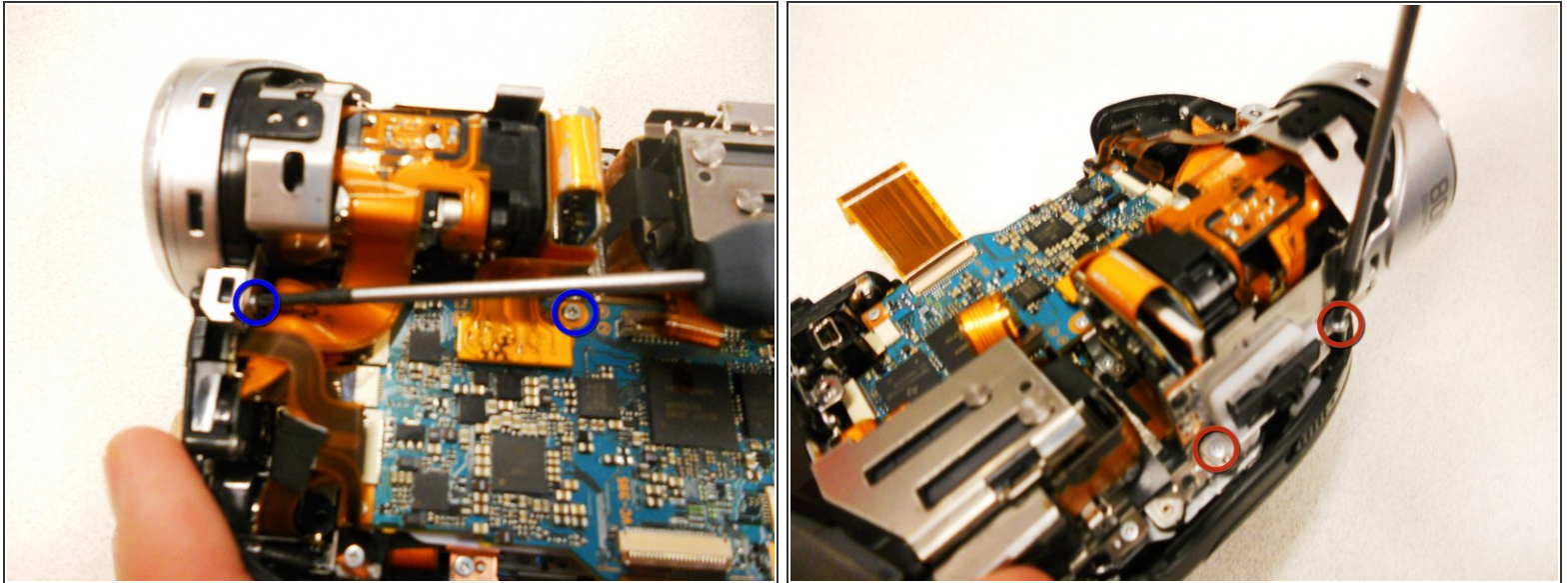
- **Note:** The copper wire strip still connecting the cover to the body of the camera must be removed. It is pointed out with a red square in the slide.

Step 10 — Lens



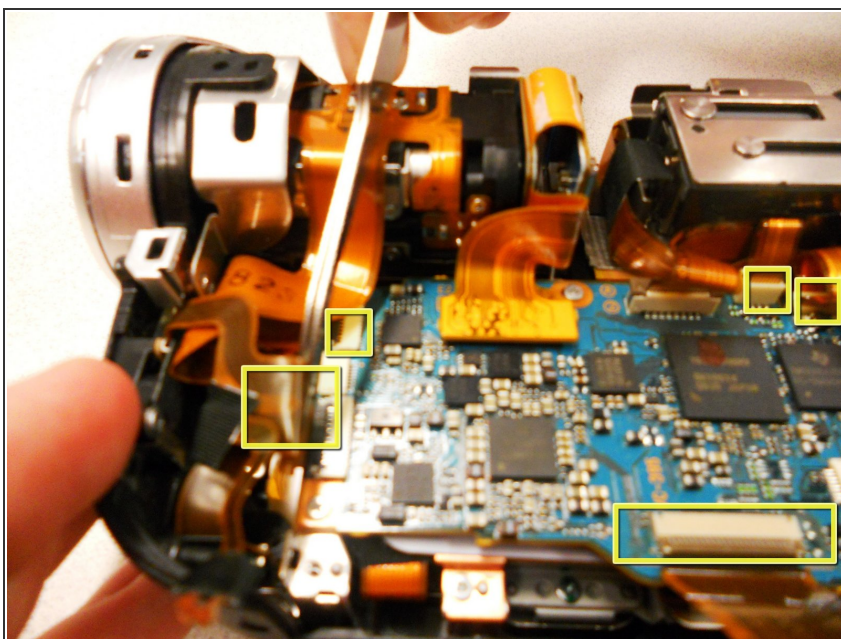
- Remove (1) 4.5mm thread connecting the lens to body of the camera.

Step 11



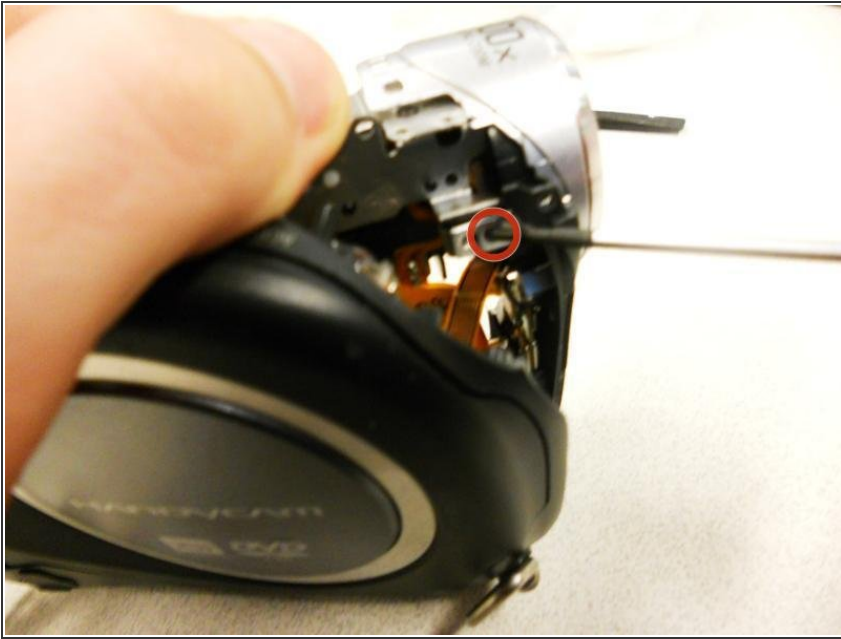
- Remove the (2) 4.5mm screws from the bottom left and the top left of the lens casing that is holding the lens in place. The screws are marked with blue circles in the slide.
- Remove the (2) 2.9mm screws from the top and bottom of the right side of lens casing. These screws are marked with red circles in the slide.

Step 12



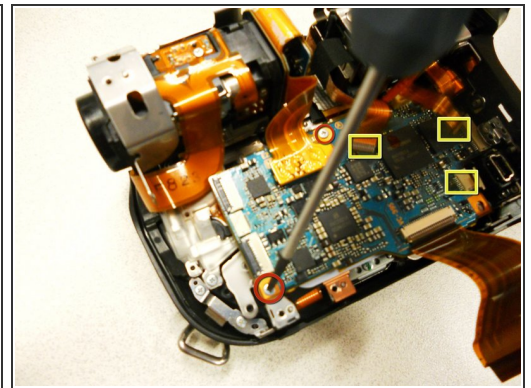
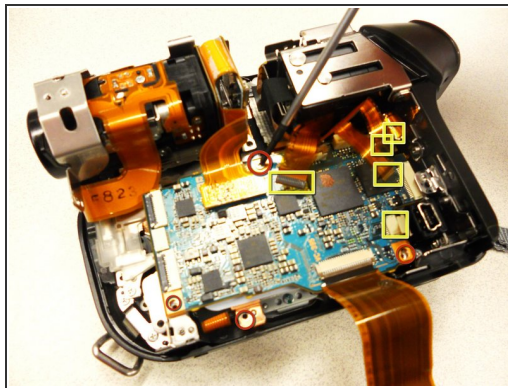
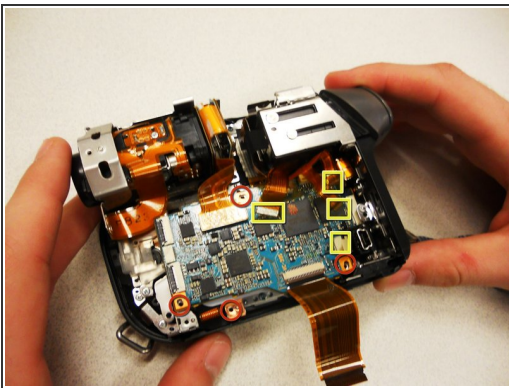
- Remove the copper strips from their inserts by sliding them out gently. If too much force is used they might tear.

Step 13



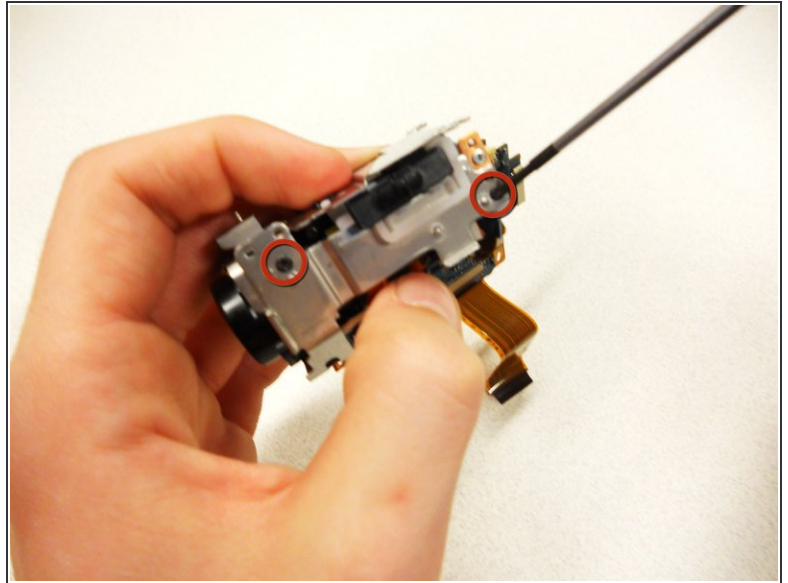
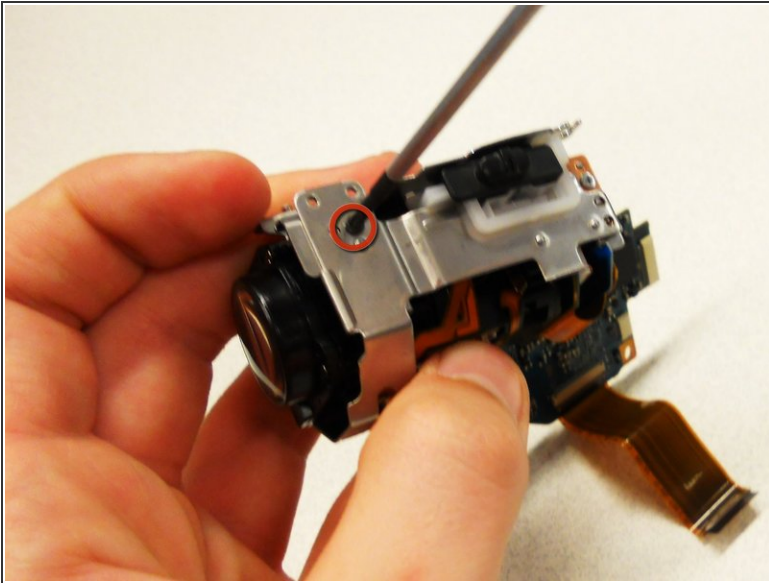
- Remove (1) 4.5mm screw that connects the body of the camera to the lens. It is located on the DVD side of the camera.

Step 14



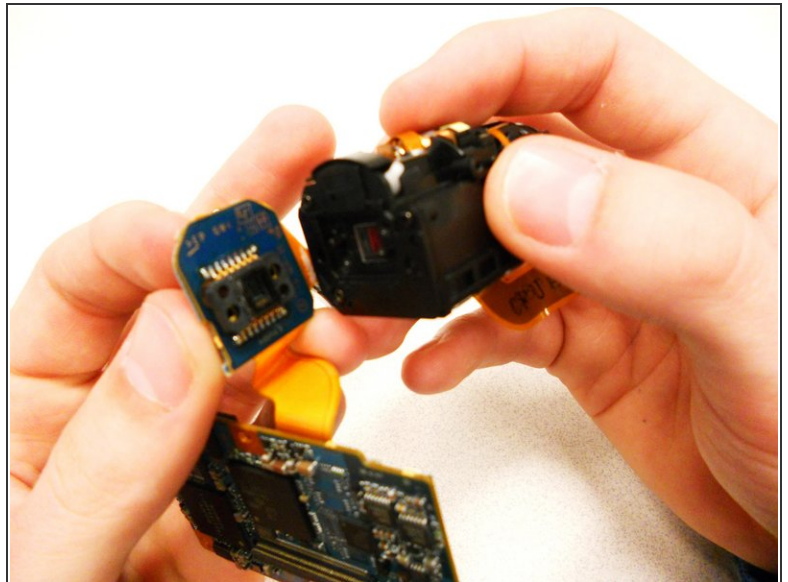
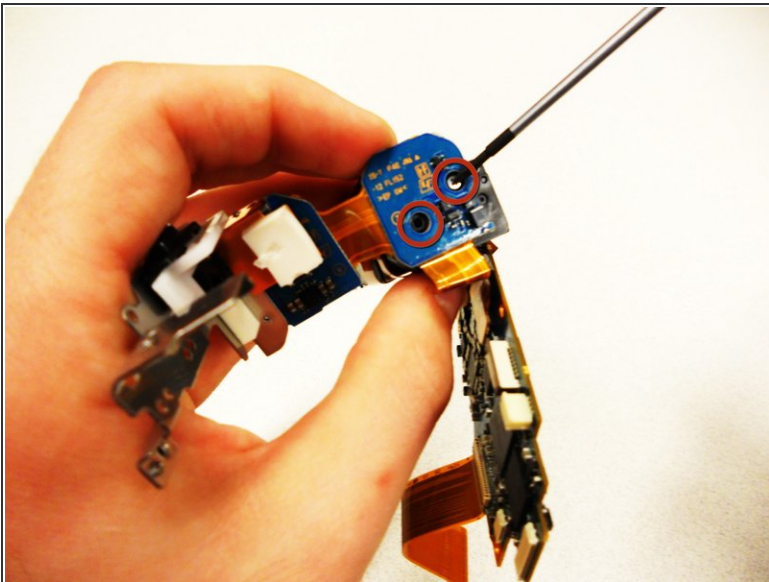
- Remove the circuit board by removing (5) 2.9mm screws. The screws are marked with red circles.
- Remove the five copper wires attached to it. The wires are marked with yellow boxes in the slide.

Step 15



- Remove the metal bracket surrounding the lens by unscrewing the (3) 2.9mm black screws.

Step 16



- Unscrew the (2) silver, 4.5mm screws that are located at the opposite end of the lens.

⚠ Caution: After the screws are removed you are left with just the lens. Be careful because there is a small piece of glass that may fall out.

To reassemble your device, follow these instructions in reverse order.