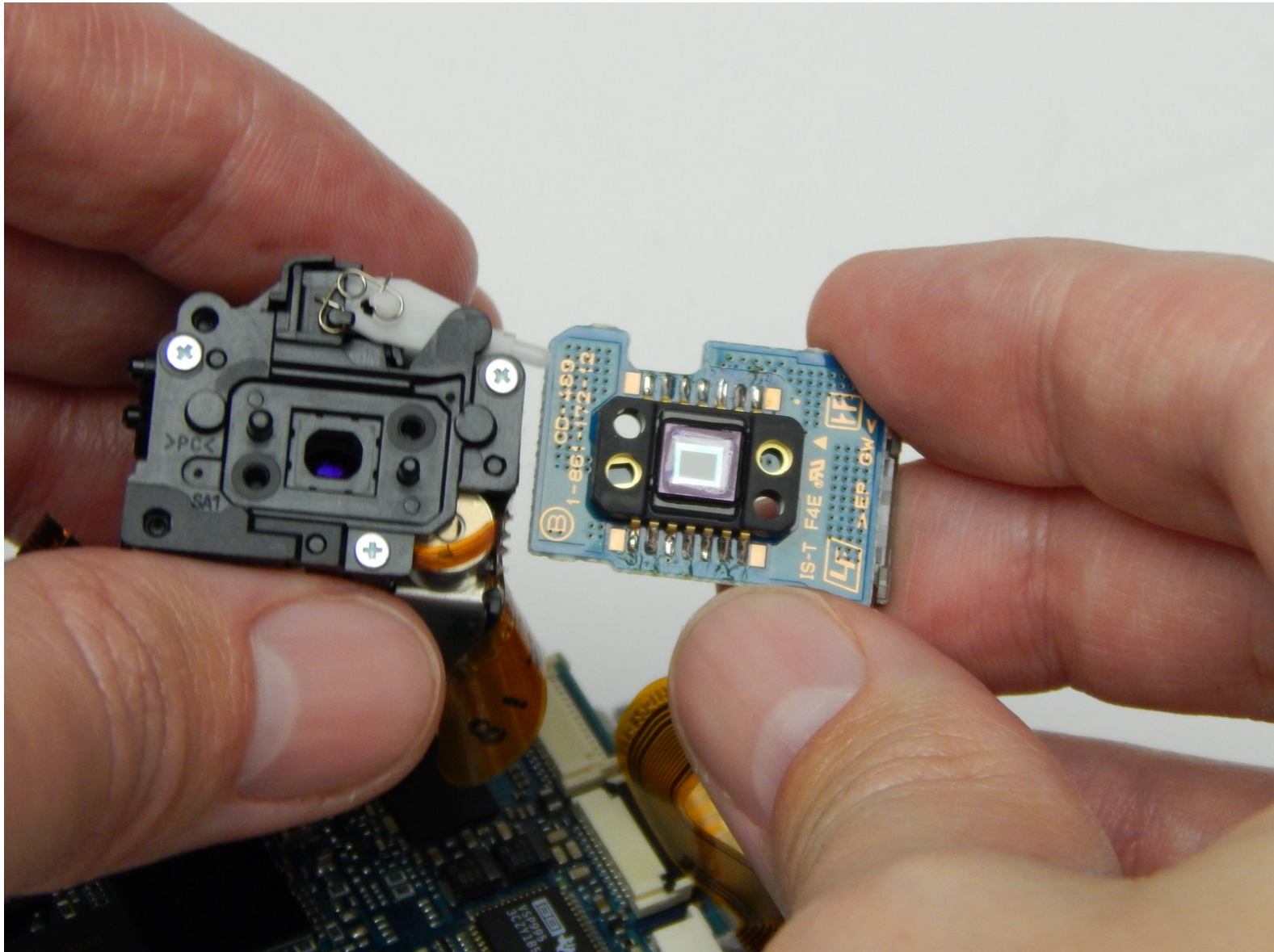




Sony Handycam DCR-HC30 CCD Image Sensor Replacement

This guide will help the owner of a Sony Handycam DCR-HC30 replace the CCD image sensor.

Written By: Matthew Hurt



INTRODUCTION

This guide details the steps necessary to replace the CCD (charge-coupled device) image sensor on a Sony Handycam DCR-HC30. This can be a fairly complex replacement if the correct tools are not used.



TOOLS:

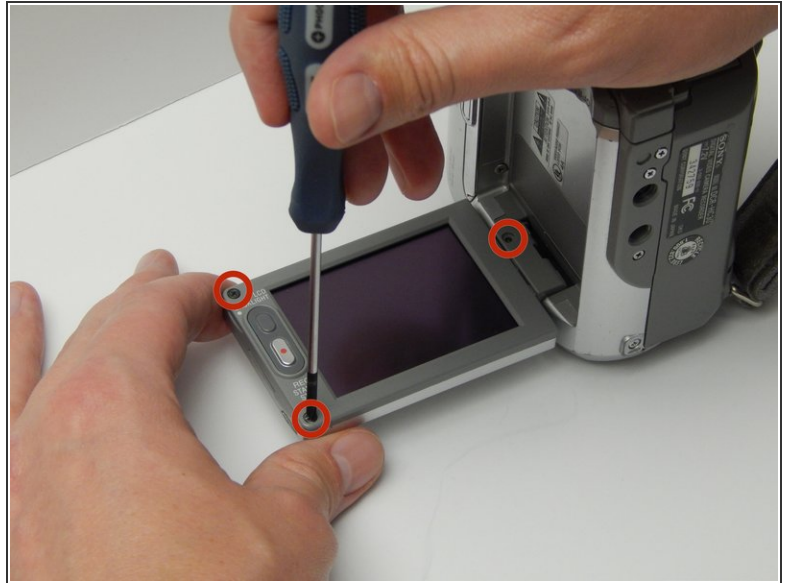
- [Phillips #00 Screwdriver](#) (1)
- [iFixit Opening Tools](#) (1)



PARTS:

- [CCD Image Sensor](#) (1)

Step 1 — CCD Image Sensor



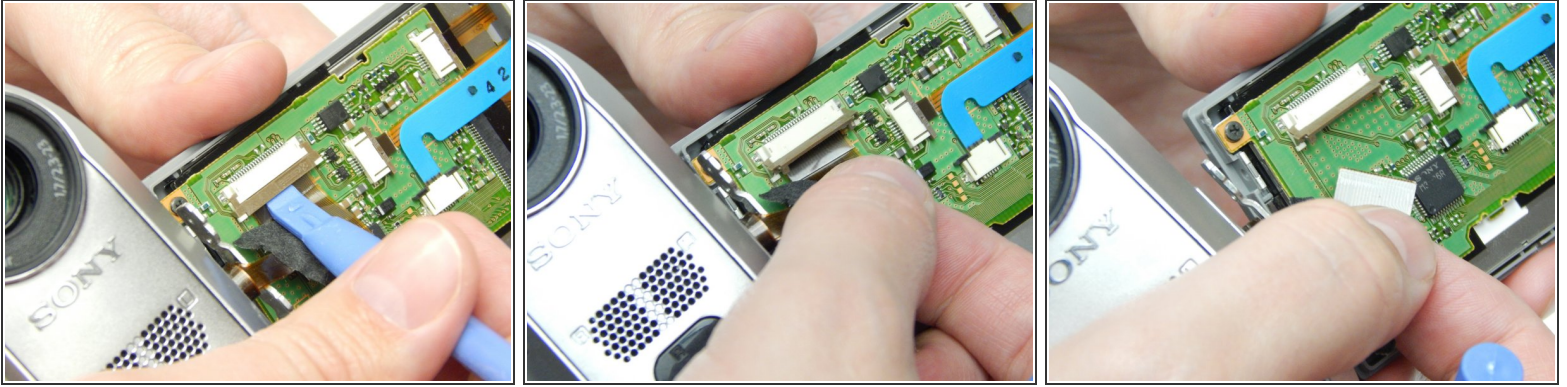
- ❗ To begin, the LCD screen must be removed.
- Bring the LCD screen to the fully open position.
- Remove the three 5 MM Phillips #1 screws on the front of the LCD screen.

Step 2




- Flip the camera with the lens facing up.
- Turn the LCD screen so you can see the 5 MM Phillips #1 screw on the inside; remove the screw.
- Spin the LCD screen around to get the 5 MM Phillips #1 screw in the same place on the other side.
- Use the plastic opening tool to gently separate the back of the screen from the unit.

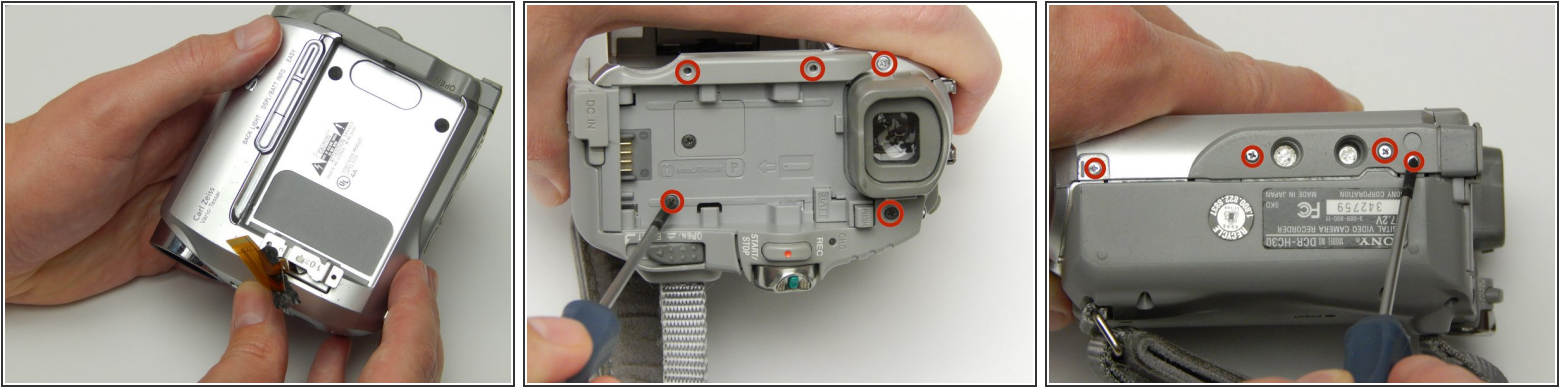
Step 3



 The parts are very small and fragile and can break easily.

- With the back off, spin the LCD screen back around.
 - Using the plastic opening tool, gently lift up the holder that keeps the ribbon in place.
 - Gently slip the ribbon from its housing.
-  When this step is completed the camera will separate from the LCD screen. From here on you will only be working with the camera itself.

Step 4



i With the LCD screen off the unit it is time to work on the rest of the screws.

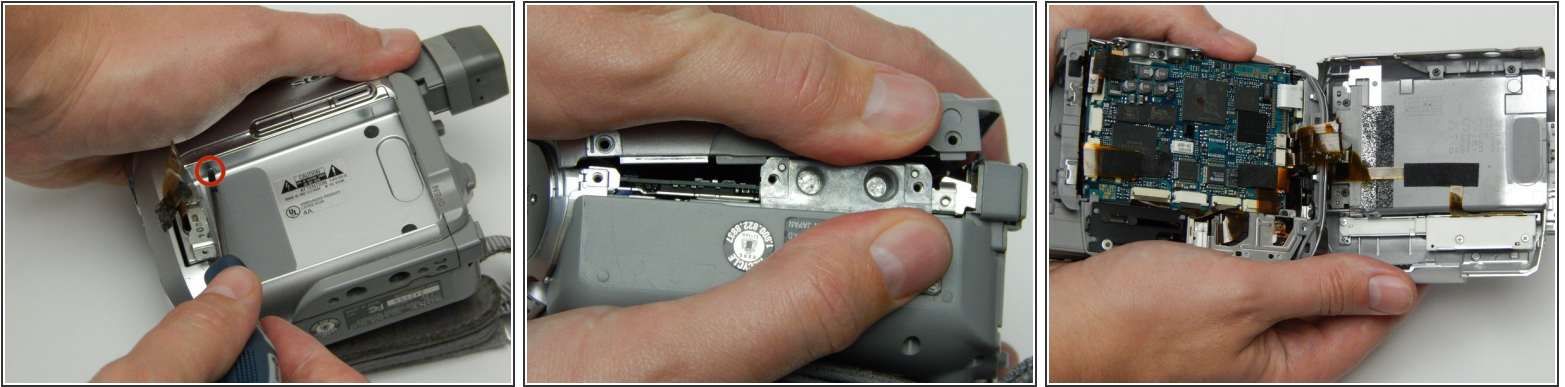
- Face the camera with the viewfinder towards you.
- Remove the five 5 MM Phillips #1 screws circled here.
- Flip the camera where the bottom faces toward you.
- Remove the four circled 5 MM Phillips #1 screws.

Step 5



- Looking downward on the camera pull the viewfinder to its fully extended position.
- Slip the plastic covering off the top of the unit.
- Remove the two 10 MM Phillips #1 screws that were under the covering.

Step 6



- Remove the last 5 MM Phillips #1 screw that is somewhat hidden in the resting place of the LCD screen.
- ⚠ For the next step make sure to be careful so as to not break any of the clips that hold the camera's two halves together.
- With the bottom of the camera facing you grasp each half of the camera and gently pull the halves apart.
- ⓘ There will be some slight popping sounds as the clips release.

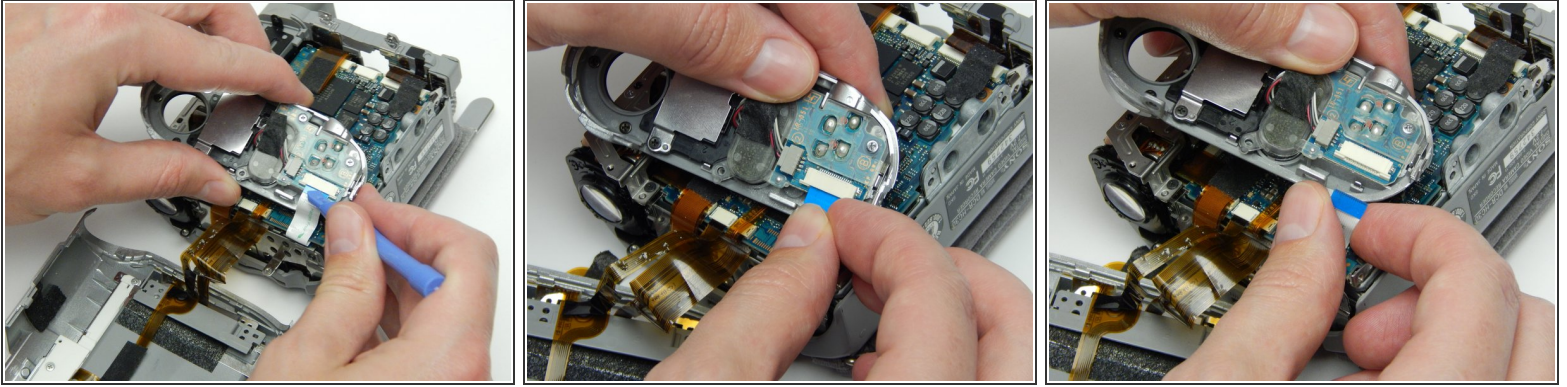
Step 7



- Face the camera with the strap toward you and remove the two 5 MM Phillips #1 screws indicated here.
- Firmly grasp the silver part of the camera below the lens and pull away.
- ⚠ Be careful not to pull the ribbon from its housing.

This document was generated on 2019-09-24 03:13:04 PM (MST).

Step 8



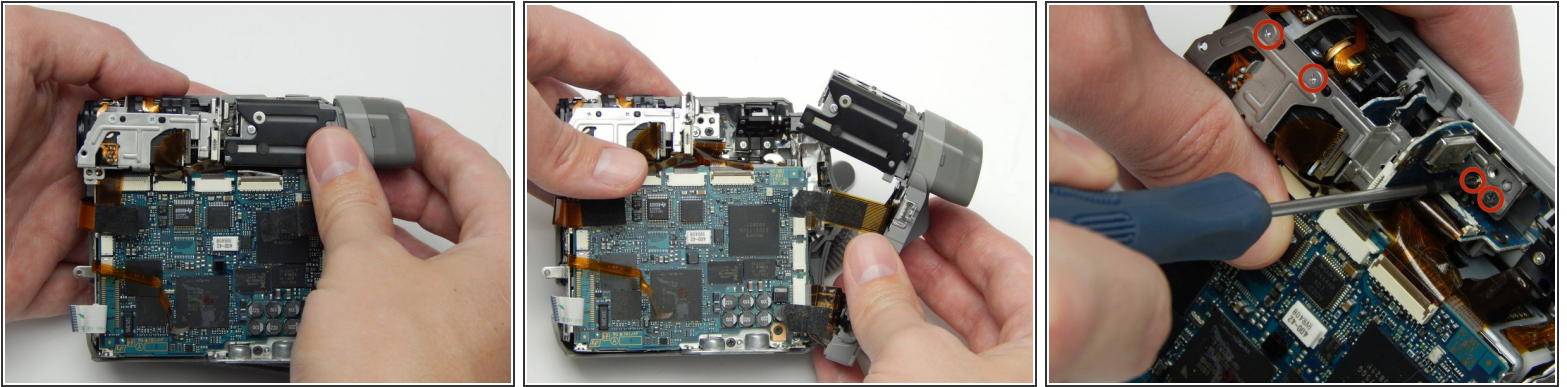
- Flip the camera on its side with the strap facing down and lay the other half as shown in the photo.
- Using the plastic opening tool remove the ribbon from its housing.

Step 9



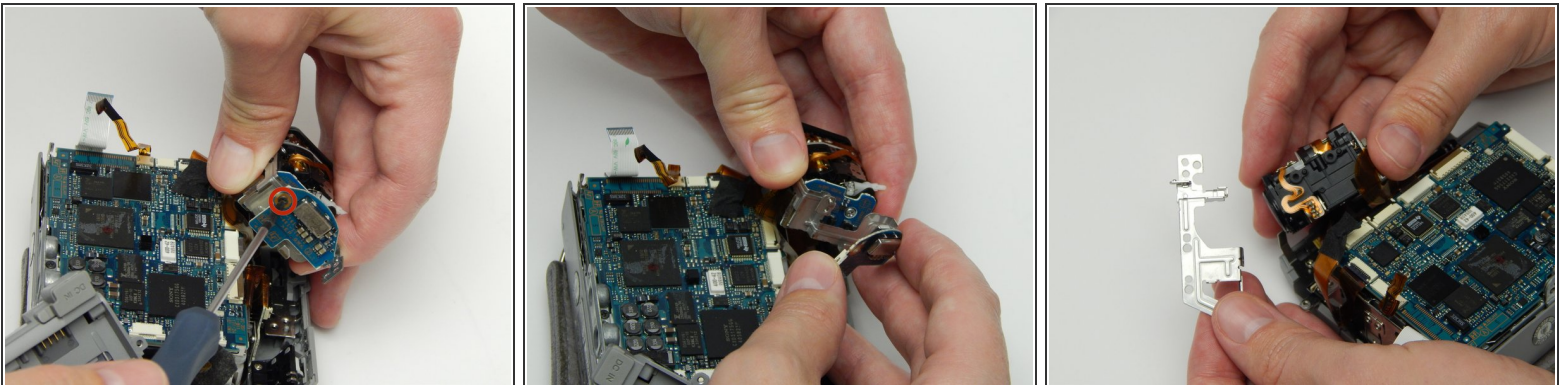
- Face the lens of the camera toward you.
- Gently remove the two ribbons that are keeping the other half linked to the camera.

Step 10



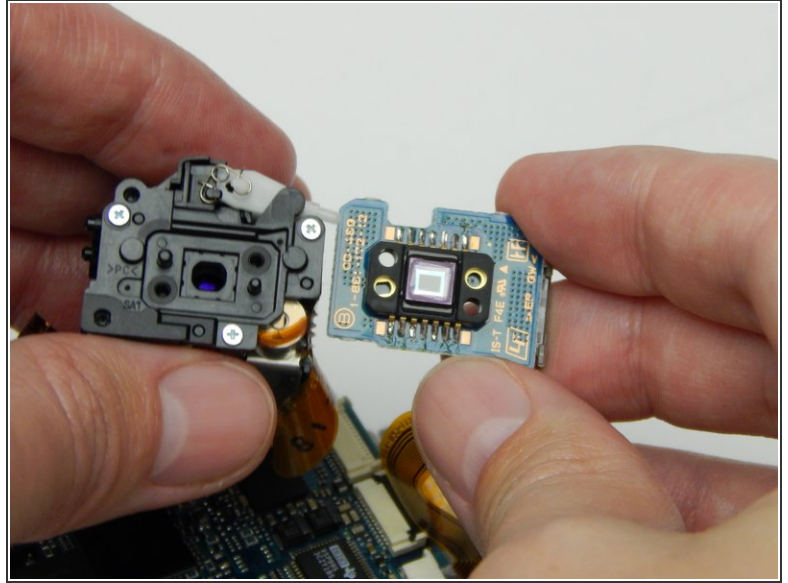
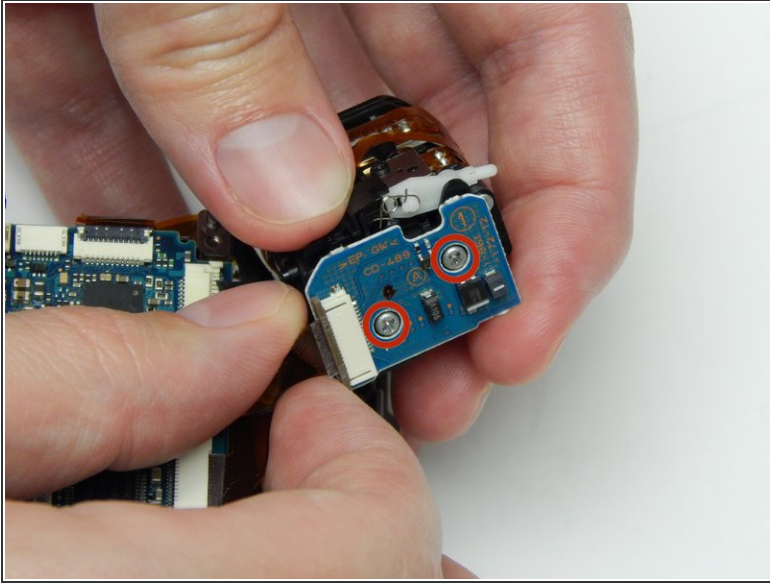
- Pull back the viewfinder piece to expose the screws holding the lens in place.
- Remove the four indicated 5 MM Phillips #1 screws.

Step 11



- ⚠ Be very careful when handling the lens. **DO NOT** touch the glass aperture or wiggle the piece too much because it can cause display issues after the unit is fixed.
- While gently holding the lens piece, remove the 5 MM Phillips #1 screw.
- Slip the aluminum arm off of the lens piece.

Step 12



- Remove the two 6 MM Phillips #1 screws holding the CCD image sensor in place.
- Remove the CCD image sensor.

To reassemble your device, follow these instructions in reverse order.