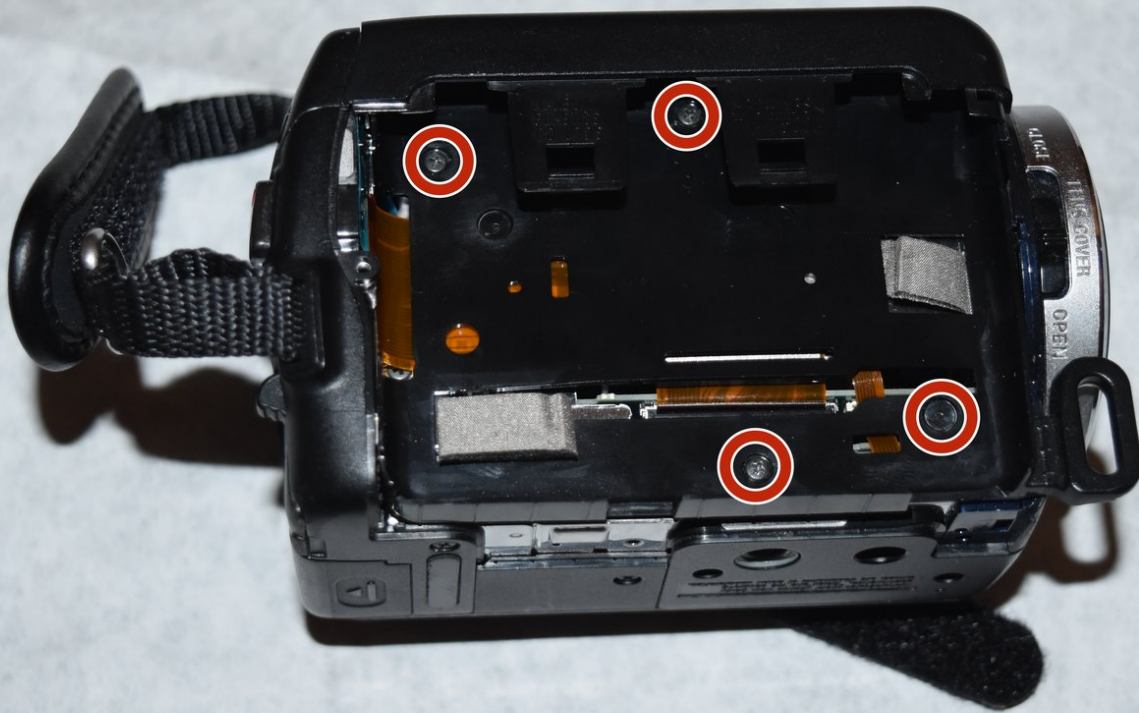




Sony Handycam DCR-SR 47 Flex Cable Replacement

The flex cable is an electronic cable, meant to be positioned and moved within a fixed object. This specific flex cable extends to the LCD Screen, and will take an almost complete opening of the camera.

Written By: Ragan Whitlock



INTRODUCTION

The flex cable can control every electronic feature of the camera, from the LCD screen to the picture settings. Replacing the flex cable can completely fix a camera that shows poor resolution or is not responding to LCD screen commands.



TOOLS:

- [Spudger](#) (1)
 - [Phillips #000 Screwdriver](#) (1)
 - [iFixit Opening Tools](#) (1)
-

Step 1 — Hard Drive



- Remove the battery.
- Use Philips #000 screwdriver to remove the 3mm screw under the battery
- *It is recommended that you wait One Hour after removing the battery before disassembling the rest of the camera

Step 2



- Using the Phillips #000 screwdriver, remove all 6 of the 3mm screws located on the side of the camera.
- *This step seems unnecessary to initially find the Hard Drive, but will allow access to the attached flex cable*

Step 3



- Using the Phillips #000 tool, remove the three 3mm screws from under the LCD screen

Step 4



- Using the Phillips #000 screwdriver, remove the one 3mm screw on the back of the camera
- Pull away the back shell of the camera, exposing the hard drive.

Step 5



- Gently pull the flex cable away from the hard drive. It should pop-off with minimal effort.
- *The black guard has been removed in the first picture. The guard does not need to be removed in order to reach hard drive and cable, but it does show the path that the cable takes*
- Once removing the flex cable, remove the plastic guard from the side of the hard drive.

Step 6 — Flex Cable



- Using the Phillips #000 screwdriver, remove the four screws from the housing under the hard drive.
- Remove the top plastic housing of the camera. All screws attaching the housing have previously been removed.

Step 7



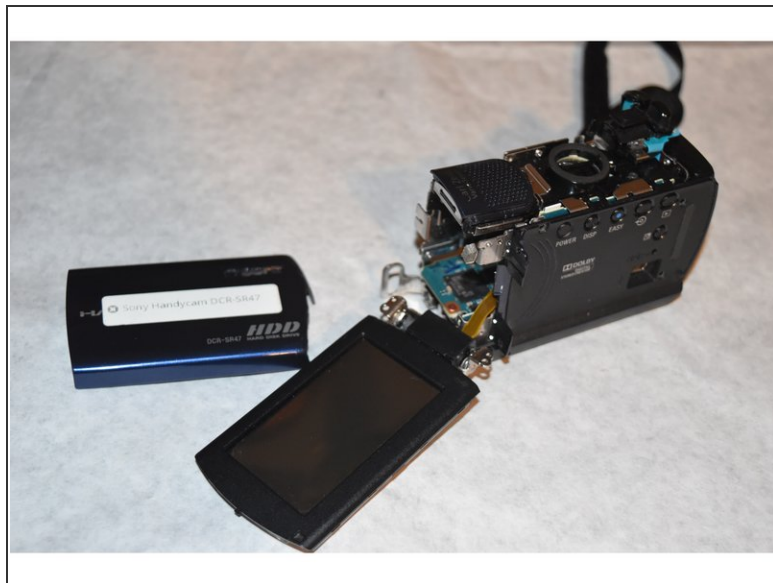
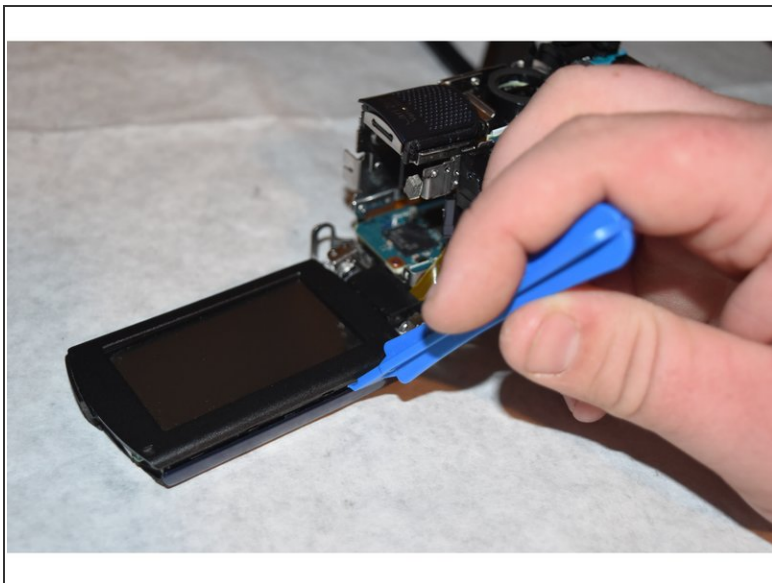
- Using the Phillips #000 screwdriver, remove the two 3mm screws from the LCD Screen connector.
- Remove the two 3mm screws that were exposed through the previous image
- Carefully detach the LCD Screen from the rest of the camera.

Step 8



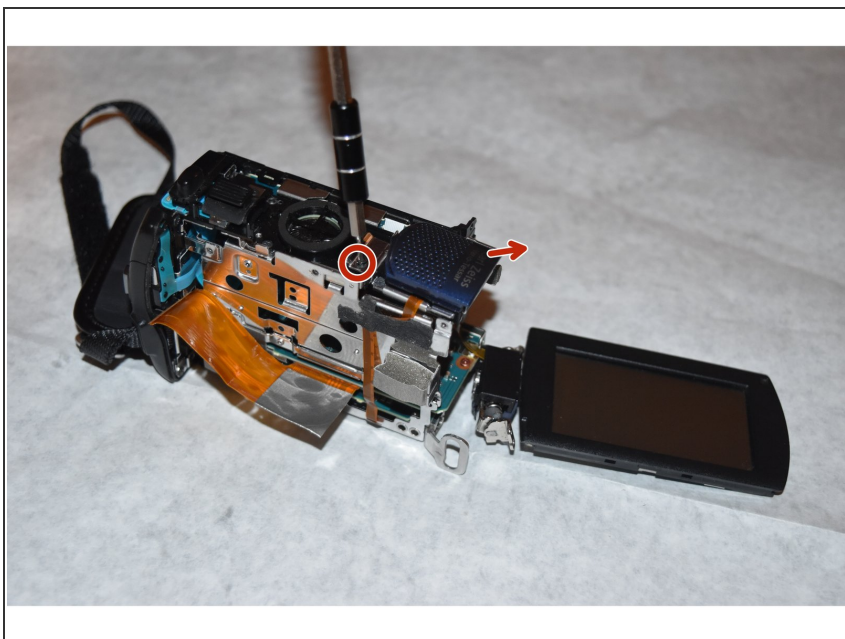
- Carefully remove the lens covering from the camera in order to access the internal components

Step 9



- Using the plastic opening tool, carefully separate the LCD Screen from the back covering

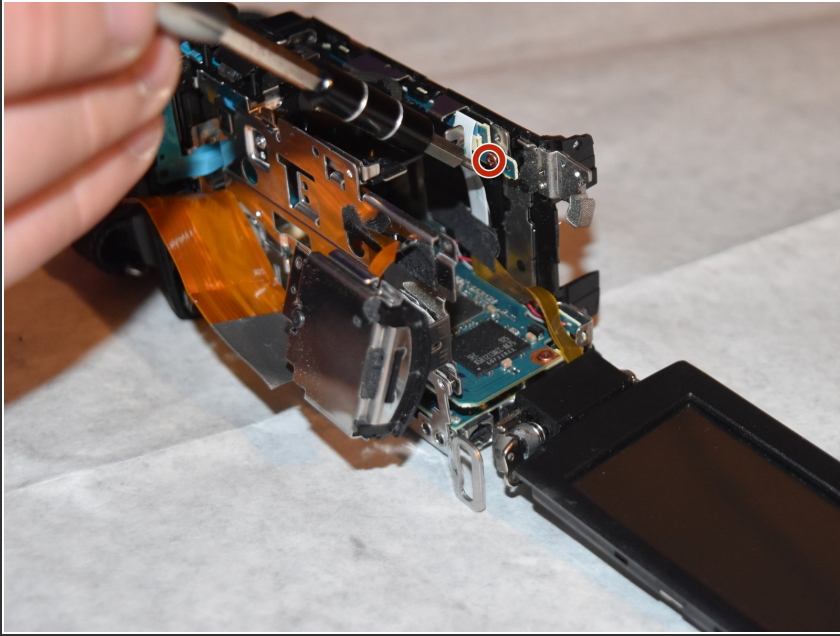
Step 10



- Using the Philips #000 screwdriver, remove the single 3mm screw from the top of the camera. This removal

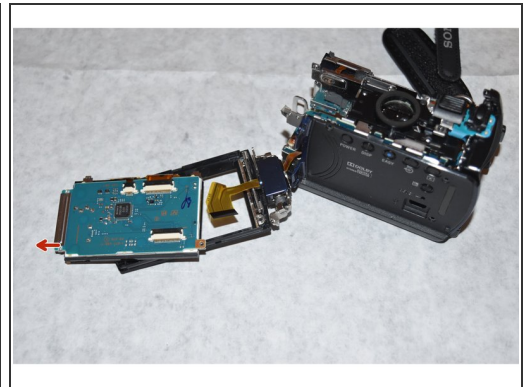
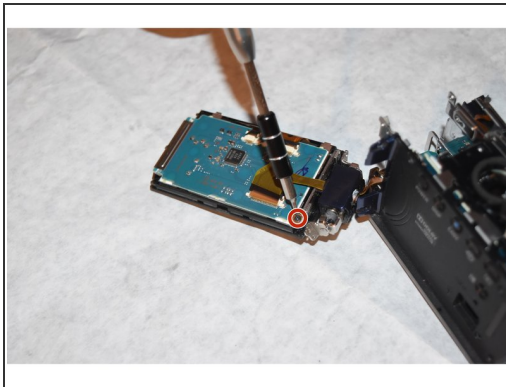
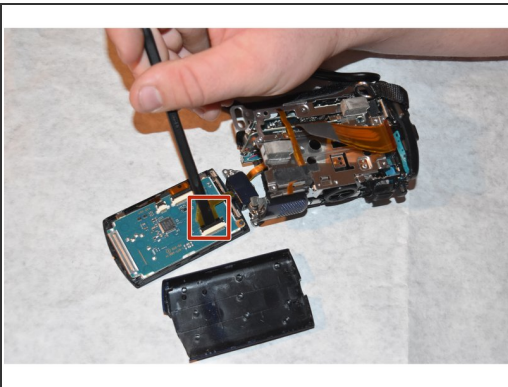
will allow the microphone port covering to be removed

Step 11



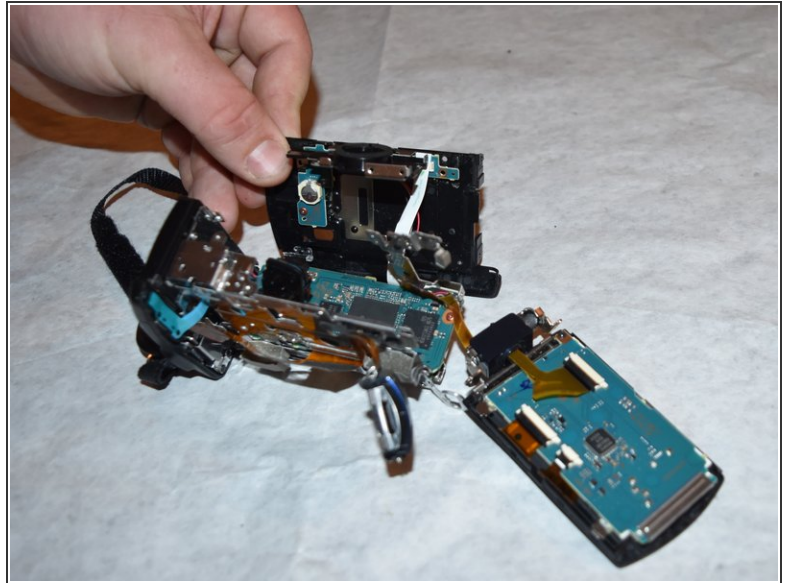
- Using the Phillips #000 screwdriver, remove the single 2mm screw from under the microphone port covering

Step 12



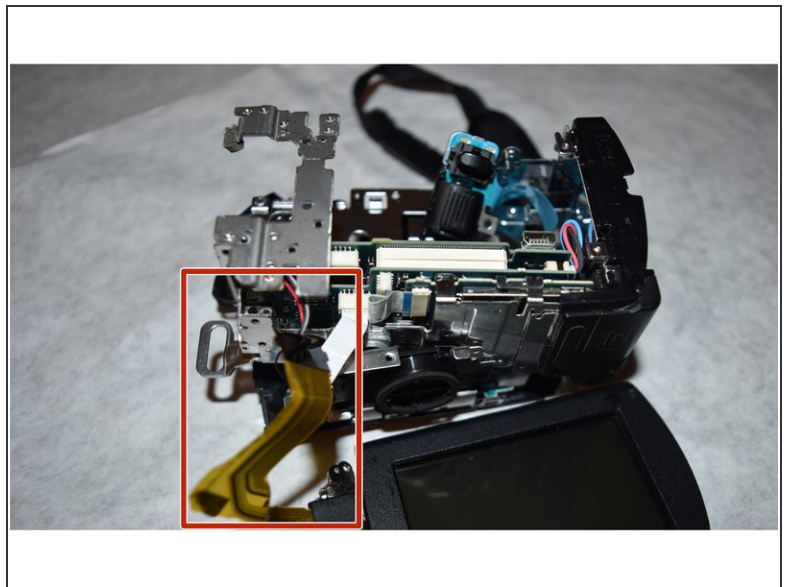
- Using the spudger, gently remove the smaller flex cable connector from the LCD screen.
- *You may also gently tug the flex cable using fingers if no opening tool is available*
- Using the Phillips #000 screwdriver, remove the one 3mm screw connecting the LCD screen from the housing.

Step 13



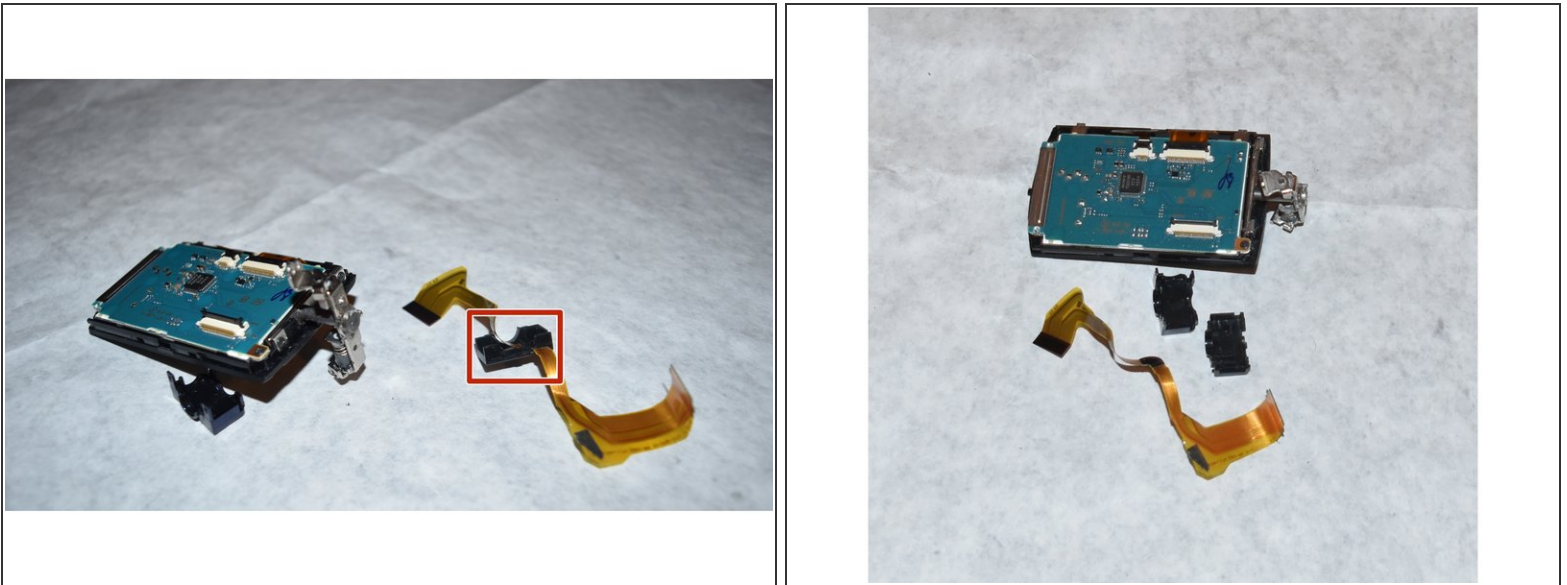
- Using the Phillips #000 screwdriver, remove the one 3mm screw from the speaker port
- Detach the speaker and side of camera from the internal components

Step 14



- Gently pull the flex cable out of the connector piece
- *a spudger may be used if necessary*

Step 15



- After removing the flex cable from the internal components, separate the LCD pivot arm housing from the flex cable using a spudger.
- The old flex cable is now free and able to be switched with the new one.

To reassemble your device, follow these instructions in reverse order.