



Sony Handycam DCR-SR42 Hard Drive Replacement

The hard drive is one of the most delicate and crucial parts of the camera, so if the camera won't power up or record images it may need to be replaced.

Written By: Dan Muller



INTRODUCTION

The hard drive is one of the most important parts of the camera, but can be easily damaged by being shaken, exposed to liquid or extreme temperatures, or exposed to magnetic fields. The hard drive may also wear out over time. A defective or broken hard drive may prevent the camera from turning on, recording images, or connecting to a computer and transferring files.

Luckily, replacing the hard drive of the DCR-SR42 is a simple procedure that will take no more than 20 minutes. However, the user should be careful when disassembling the camera in order to avoid damaging the flex cable or any other internal components of the camera. The user should also ensure that the battery is disconnected from the camera at least an hour before disassembly is attempted, since capacitors inside the camera can remain charged with electricity some time after the battery is removed. It is necessary to allow capacitors to discharge to prevent injury to the user or damage to the camera.

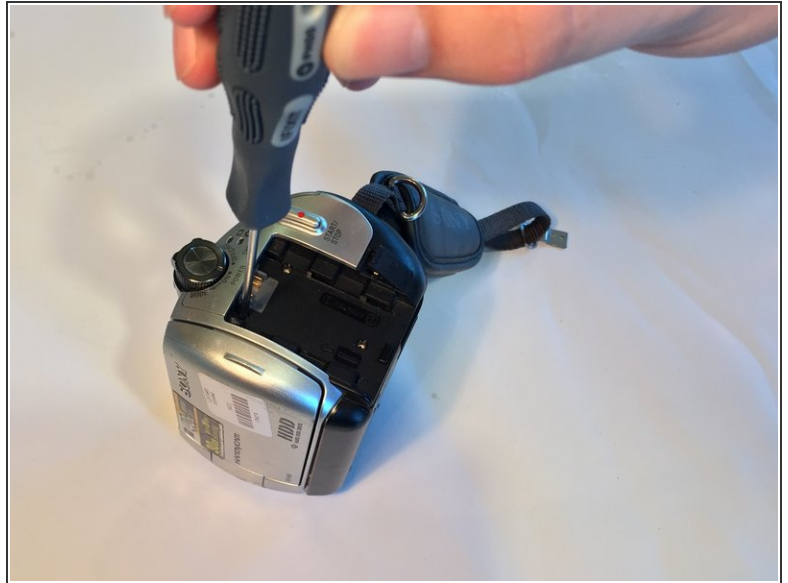
For problems pertaining to the hard drive, please refer to the [Sony Handycam DCR SR-42 Troubleshooting Guide](#)



TOOLS:

- [Phillips #00 Screwdriver](#) (1)
-

Step 1 — Hard Drive



- Remove the battery, and use the Phillips #00 precision screwdriver to then remove the three 3mm Phillips #00 screws under the battery.

⚠ Wait 1 hour after removing the battery before continuing to disassemble the camera.

Step 2



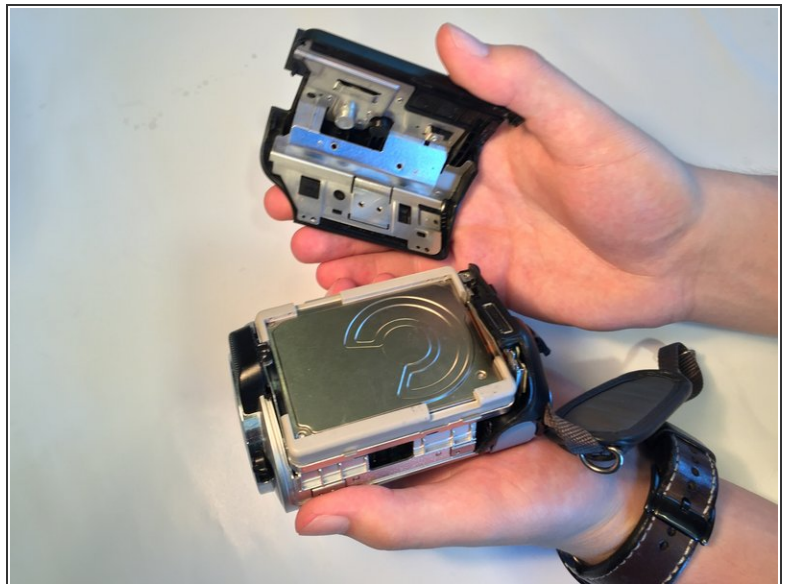
- Remove the three 3mm #00 Phillips screws on the bottom of the camera.

Step 3



- Remove the three 3mm Phillips #00 screws on the side of the camera.
- Remove the 4mm Phillips #00 screw under the AV port cover.

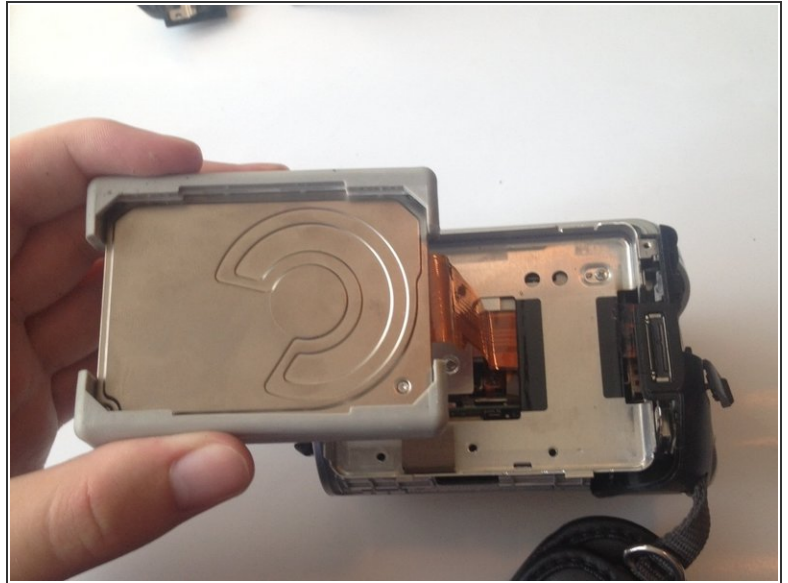
Step 4




- Gently pull the black plastic hard drive cover away from the body of the camera. This will expose the hard drive.

i Even with all the screws removed, this part will require some force to remove.

Step 5



- Lift the hard drive out of the camera by grasping the grey rubber mounting brackets and pulling them upwards.

 The hard drive is attached to the flex cable. Remove the hard drive slowly to prevent the flex cable from being damaged.

Step 6



- Remove the rubber mounting brackets by pulling them off the hard drive.

Step 7



- Carefully unplug the flex cable from the hard drive.

To reassemble your device, follow these instructions in reverse order.