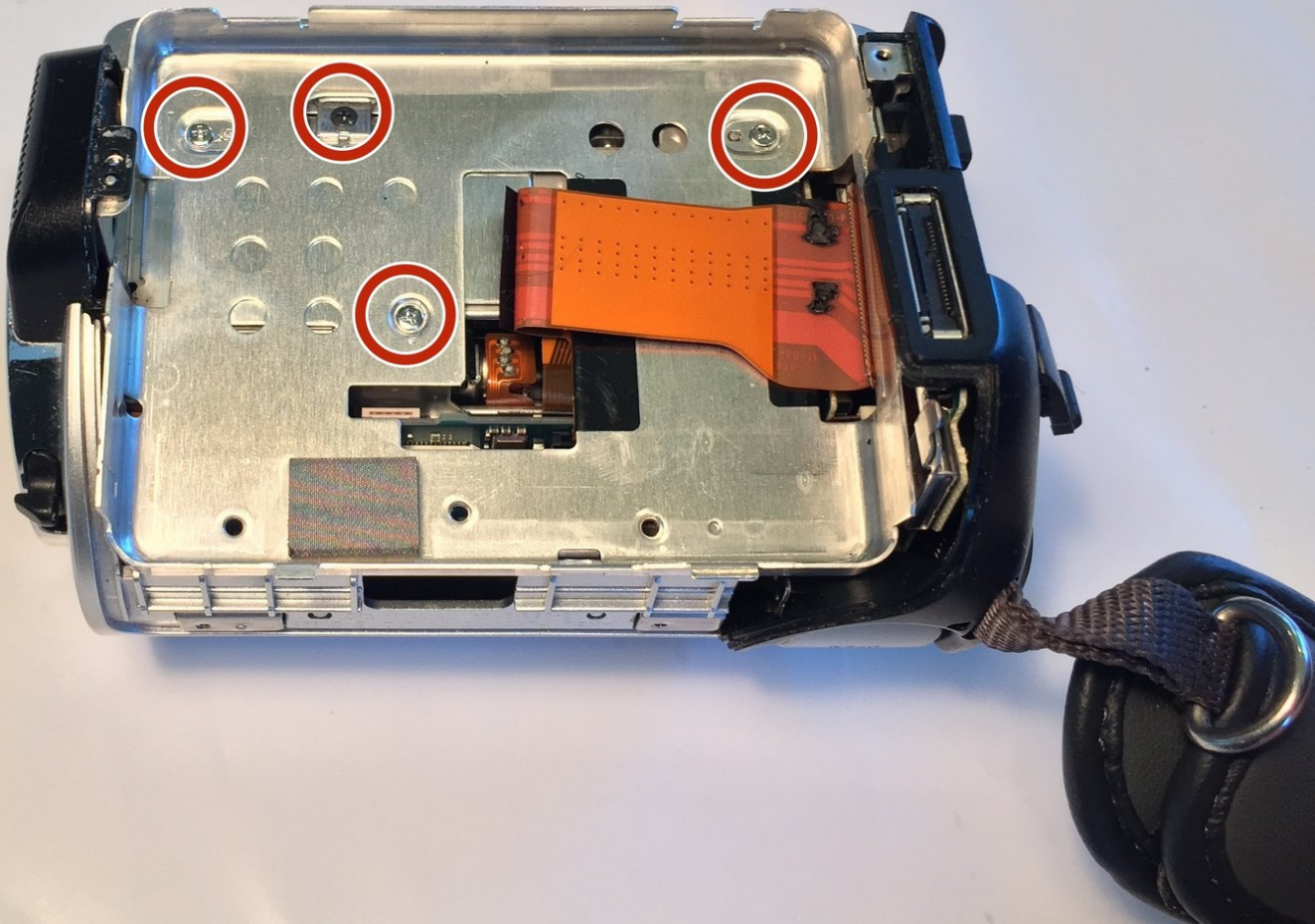




# Sony Handycam DCR-SR42 Internal Components Replacement

Prerequisite only

Written By: Dan Muller



---

# INTRODUCTION

Prerequisite only



## TOOLS:

- [Phillips #00 Screwdriver](#) (1)
  - [iFixit Opening Tools](#) (1)
-

## Step 1 — Hard Drive



- Remove the battery, and use the Phillips #00 precision screwdriver to then remove the three 3mm Phillips #00 screws under the battery.

⚠ Wait 1 hour after removing the battery before continuing to disassemble the camera.

## Step 2



- Remove the three 3mm #00 Phillips screws on the bottom of the camera.



### Step 3




- Remove the three 3mm Phillips #00 screws on the side of the camera.
- Remove the 4mm Phillips #00 screw under the AV port cover.

### Step 4




- Gently pull the black plastic hard drive cover away from the body of the camera. This will expose the hard drive.

 Even with all the screws removed, this part will require some force to remove.

## Step 5



- Lift the hard drive out of the camera by grasping the grey rubber mounting brackets and pulling them upwards.

 The hard drive is attached to the flex cable. Remove the hard drive slowly to prevent the flex cable from being damaged.

## Step 6



- Remove the rubber mounting brackets by pulling them off the hard drive.

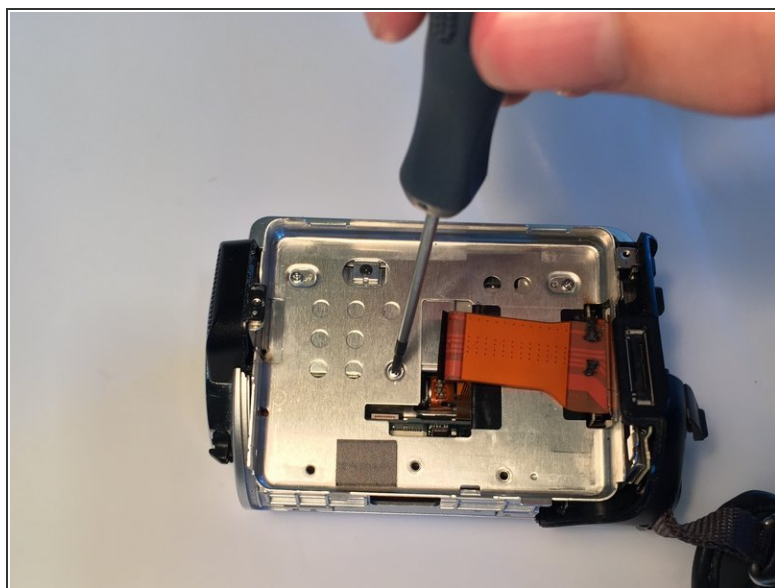
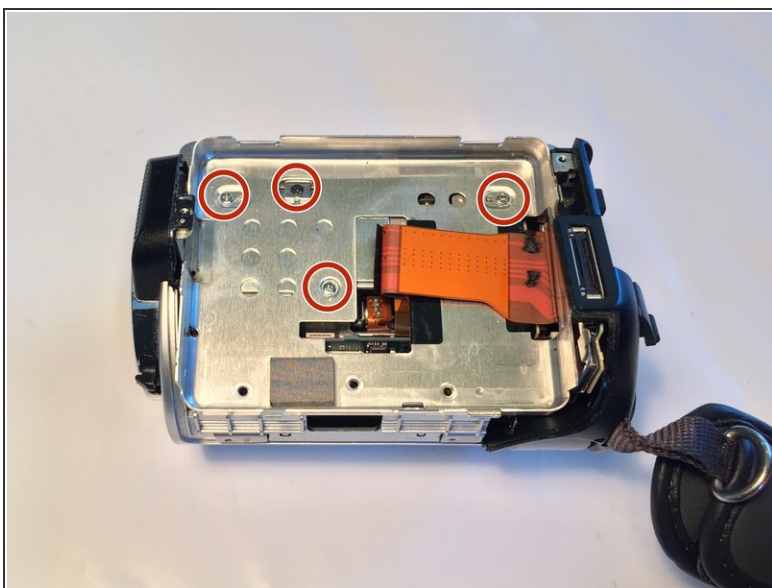


## Step 7



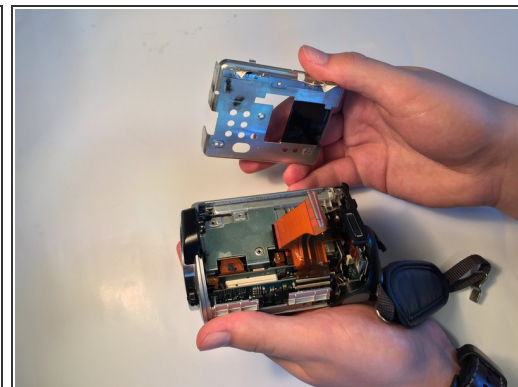
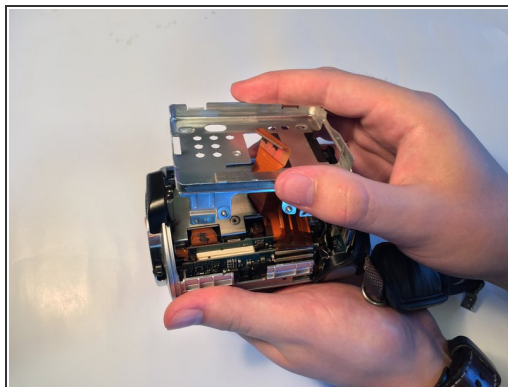
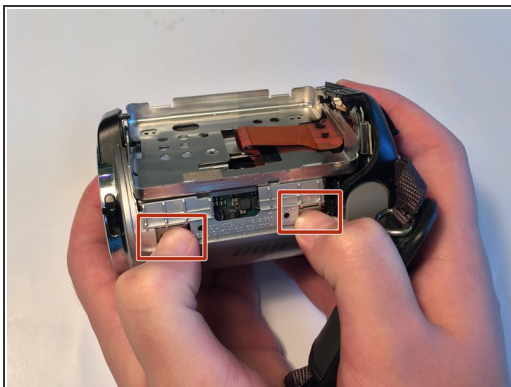
- Carefully unplug the flex cable from the hard drive.


## Step 8 — Internal Components



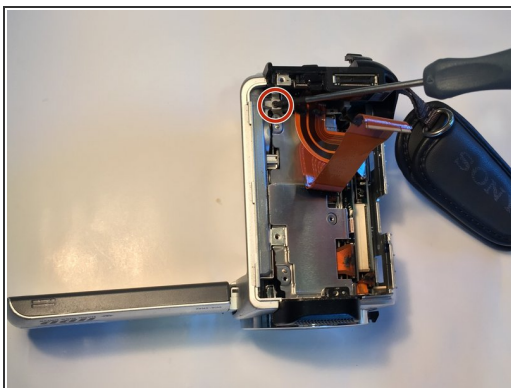
- Remove the four 3mm Phillips #00 screws from under the hard drive.

## Step 9



- Press in on the two tabs as shown and lift the metal plate up and off the camera.
-  Even with all the screws removed, this part will require some force to remove.

## Step 10



- Remove the two 4mm Phillips #00 screws from the underside of the camera.
- Remove the 2 mm Phillips #00 screw from the screen hinge.

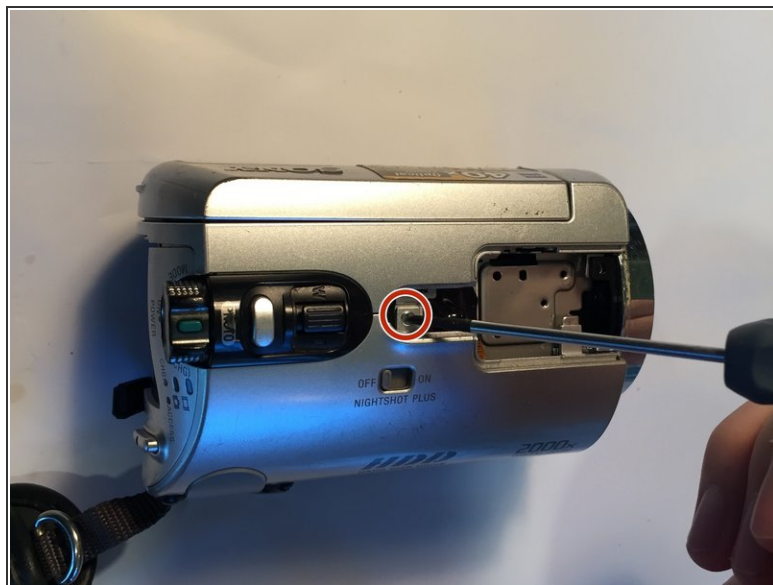
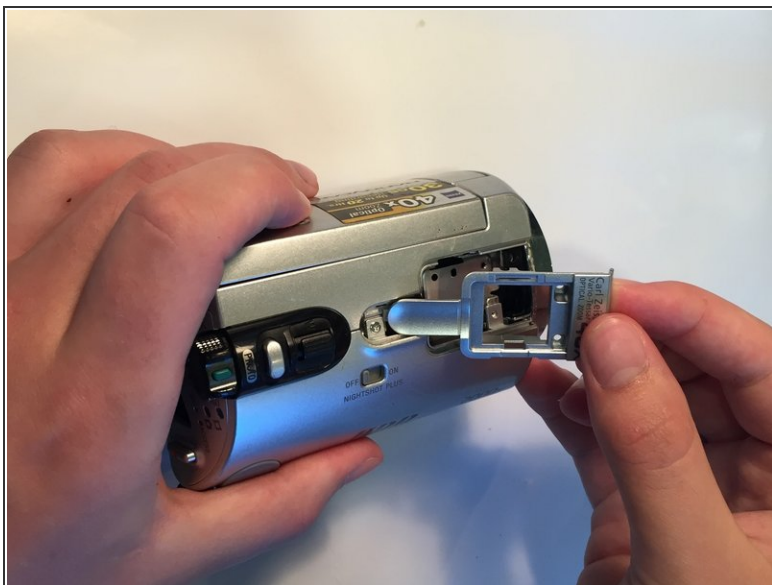


## Step 11



- Use the plastic opening tool to remove the plastic cover from the top of the camera.
- Remove the two 3mm Phillips #00 screws from underneath the plastic cover.

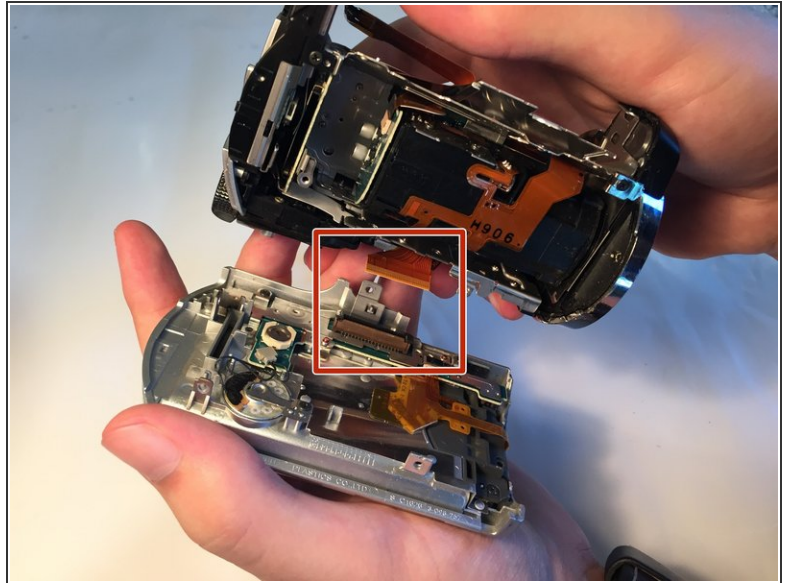
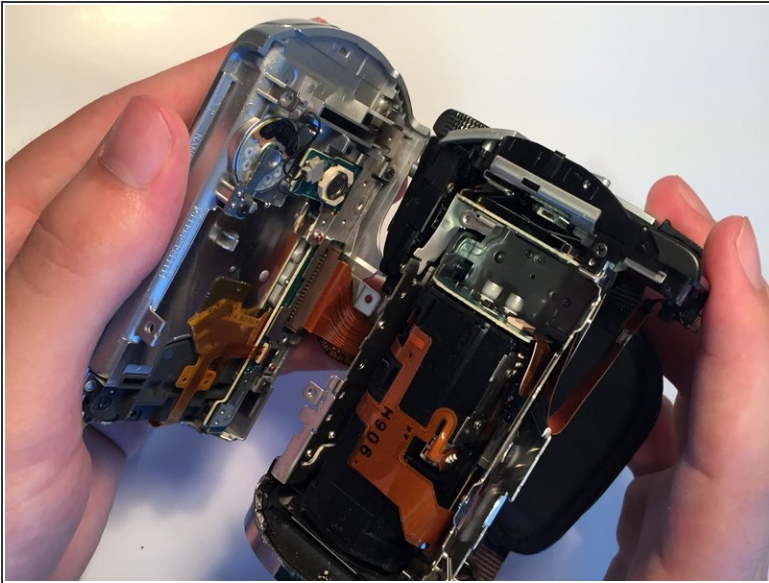
## Step 12



- Remove the second plastic cover from the top of the camera.
- Remove the 4mm Phillips #00 screw from underneath the cover.



## Step 13



- Carefully pry the screen assembly apart from the main body of the camera.
  - Unplug the flex cable from the screen assembly.
- i** Even with all the screws removed, this part will require some force to remove.

To reassemble your device, follow these instructions in reverse order.