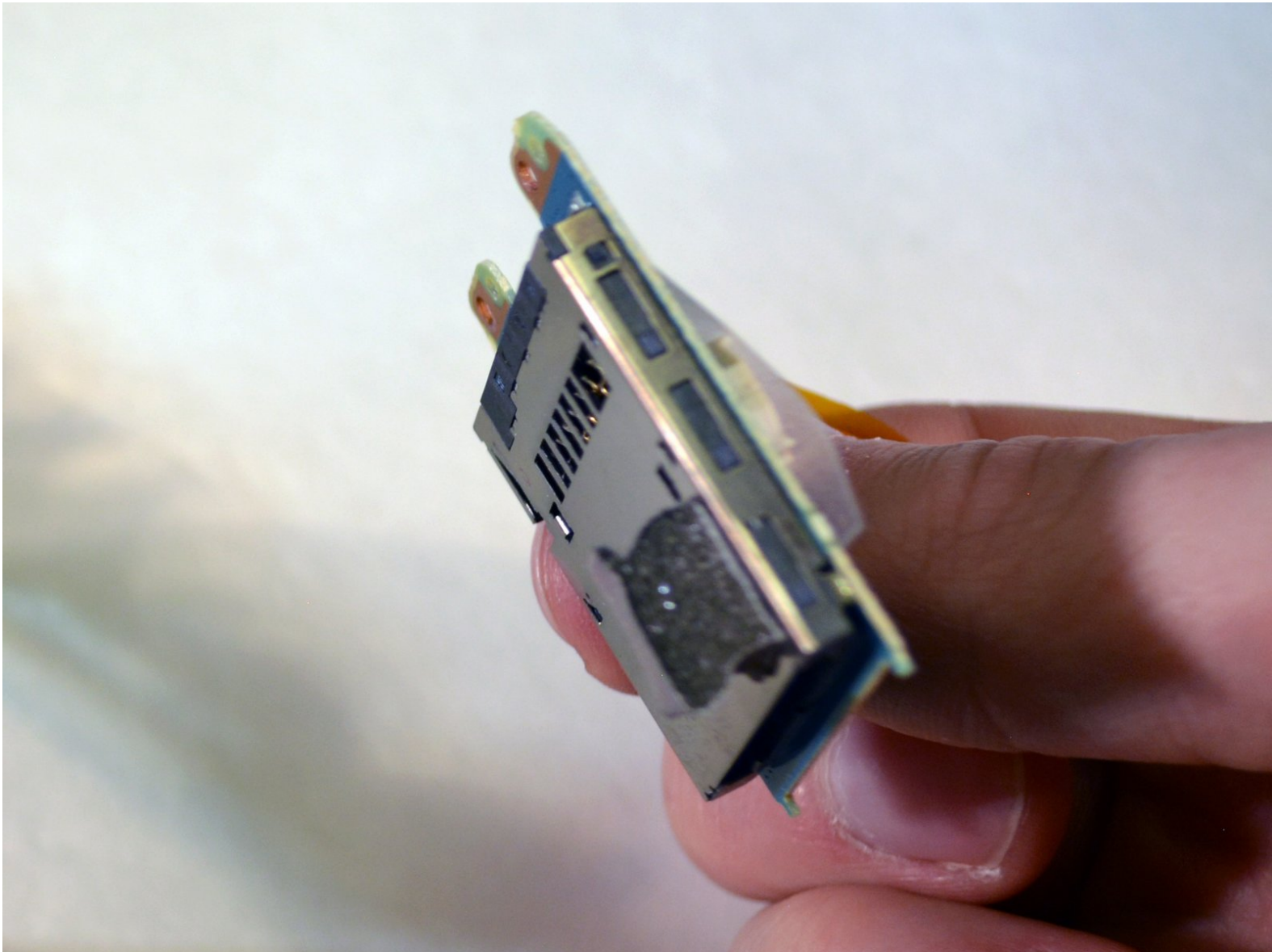




# Sony Handycam DCR-SR68 SD Card Slot Replacement

This guide will take you through the steps to replace the SD card slot.

Written By: alejandro zuniga



## INTRODUCTION

Can't save all those breathtaking moments without an operating SD card slot! This guide will guide you through removing the outer casing and replacing the SD card slot.

---

### TOOLS:

- [iFixit Opening Tools](#) (1)
  - [Spudger](#) (1)
  - [JIS Driver Set](#) (1)
  - [Tweezers](#) (1)
-

## Step 1 — HDD

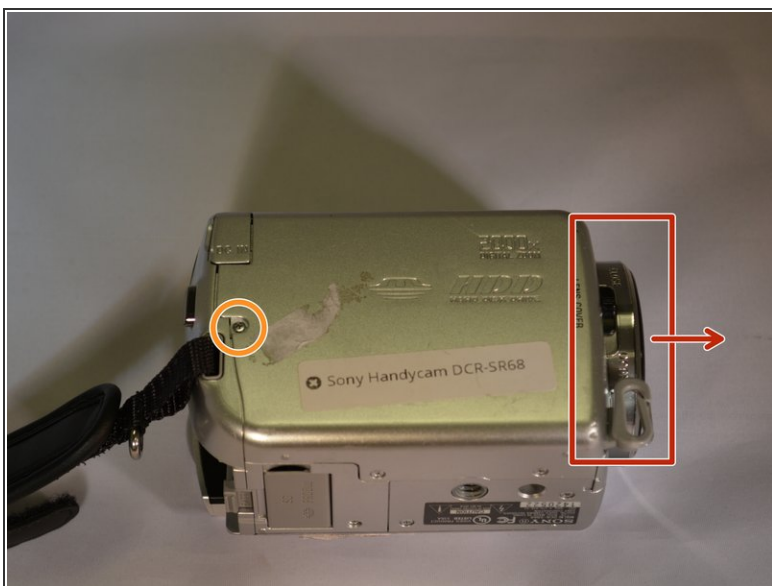


✦ Wash and dry your hands, then put on a properly grounded anti-static wrist strap, before handling internal electronic components. To ground the wrist strap, attach it to the metal chassis of a plugged-in three prong power supply, of a computer for example.

● Unfasten the hand strap.

⚠ Remove the battery.

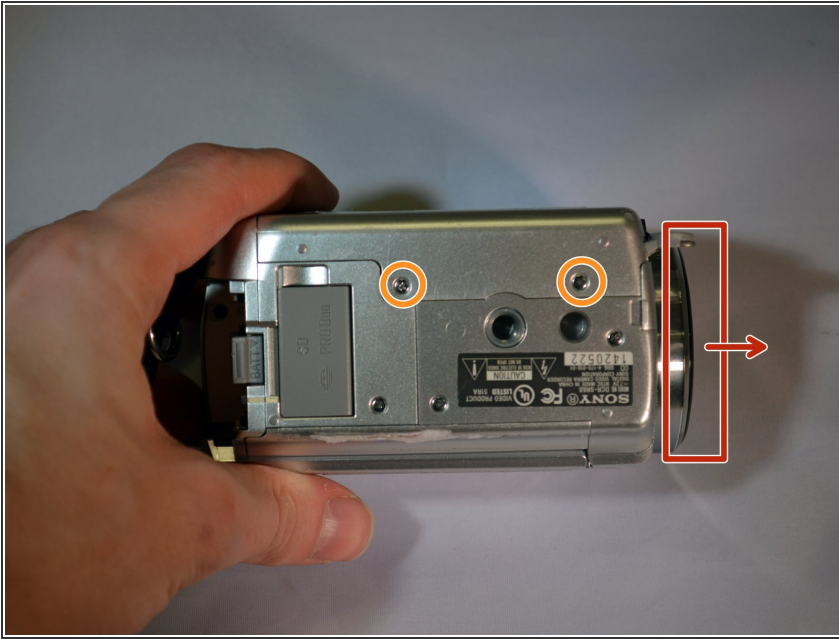
## Step 2



- Place device on left side with front lens facing right.
- Using a JIS size #00 precision Phillips screwdriver, unscrew the left middle 3mm Phillips screw.
- Open the "DC IN" plastic tab (Second 3mm Phillips screw is revealed).
- Unscrew the second 3mm Phillips screw.



### Step 3



- Turn device over onto its top with the front lens facing right.
  - Unscrew the top left and top right 3mm Philips screws.
- ⓘ The right side case panel is now unfastened (the case panel facing up in the photo).

### Step 4



- Remove the right side case panel by pulling up.
- ⓘ The Hard Drive (HDD) is now revealed.

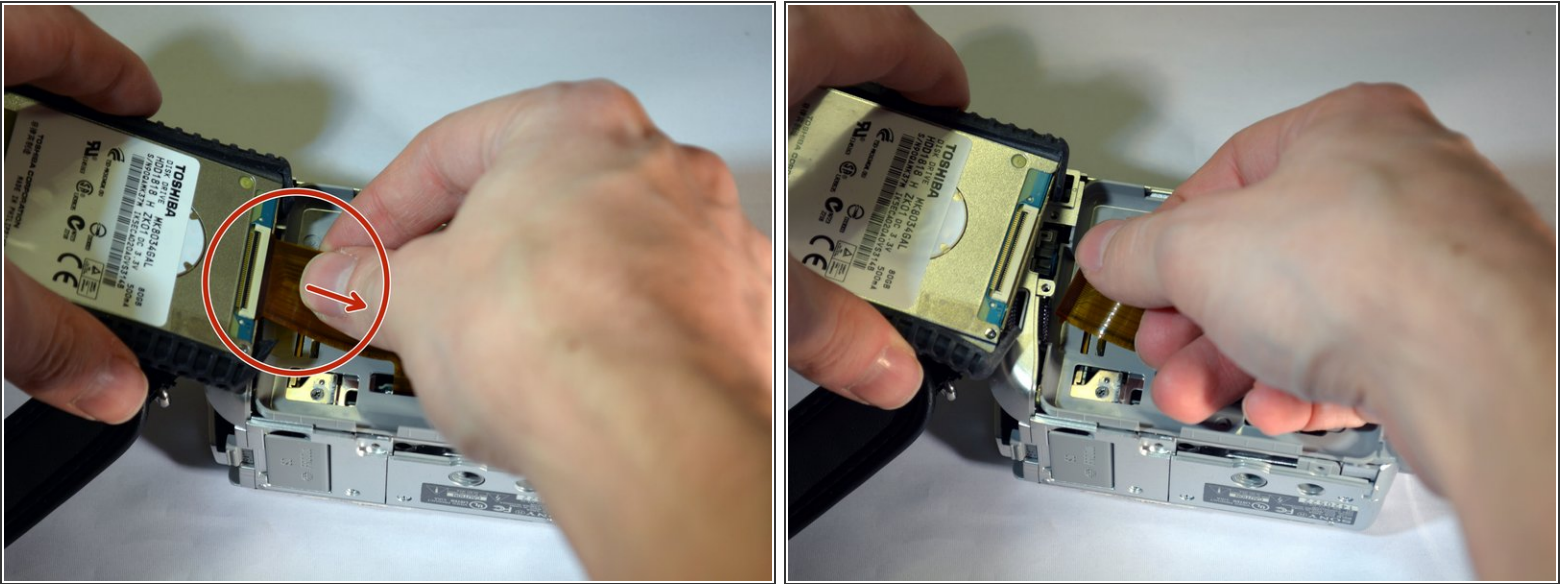
## Step 5



- Using your fingers, lift the HDD from its right end, pivoting on its left end.

**i** The HDD ribbon wire is now exposed.

## Step 6



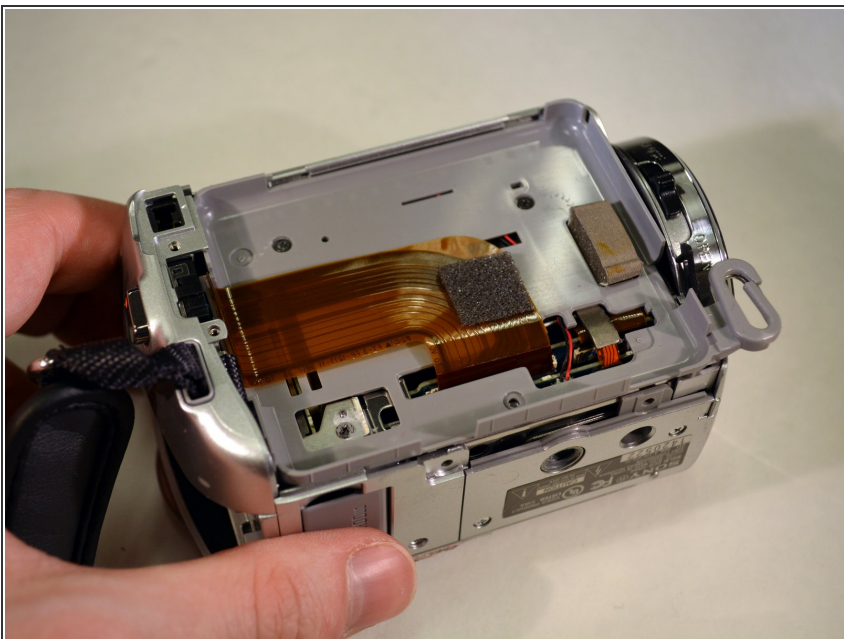
- While securely holding the HDD in your left hand, use the soft pad of your right hand fingers to gently pull the ribbon wire out of its socket, toward your right.

**i** The HDD is now free from the device.

- Replace HDD.

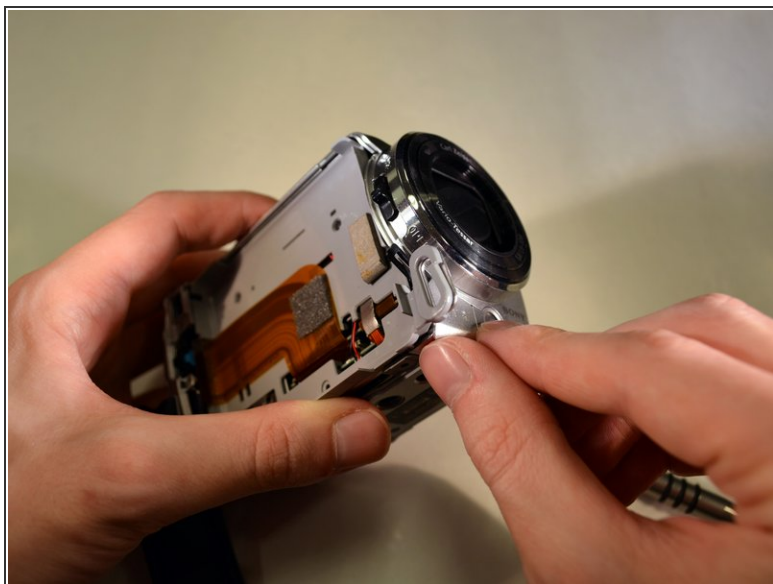
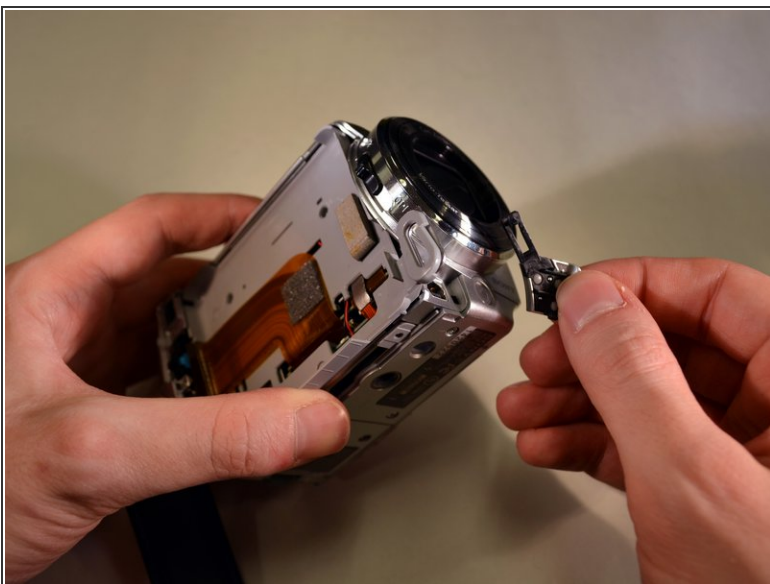


## Step 7 — SD Card Slot



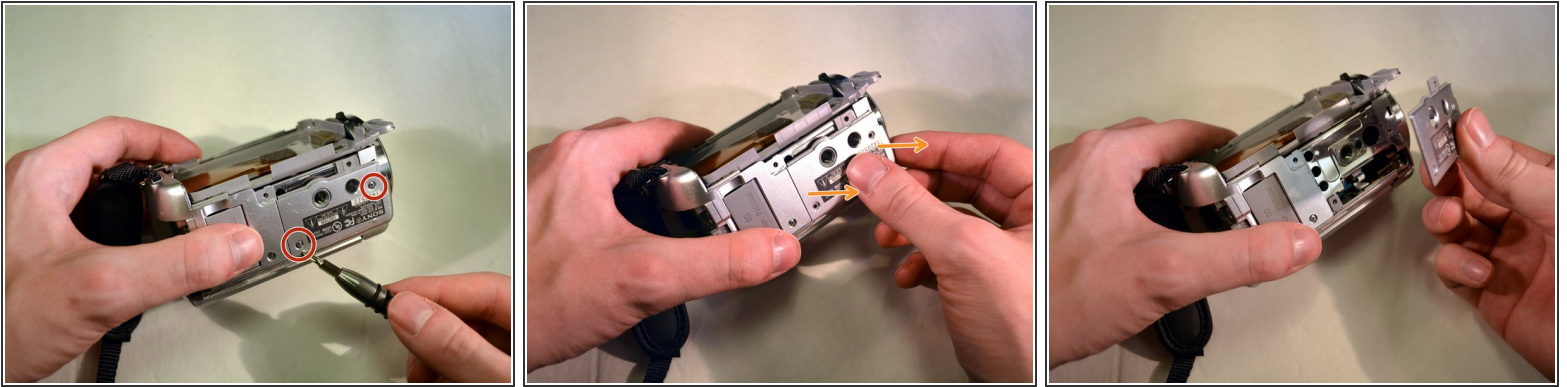
- Follow steps on HDD removal/**Edits are unnecessary for this step.**

## Step 8



- Use your fingers to remove the A/V tab./**Edits are unnecessary for this step.**

## Step 9



- On the bottom of the device, use a JIS size #00 precision Phillips screwdriver to remove the 3mm Philips screws on the right side and middle bottom of the bottom case panel.
- Remove the bottom case panel.

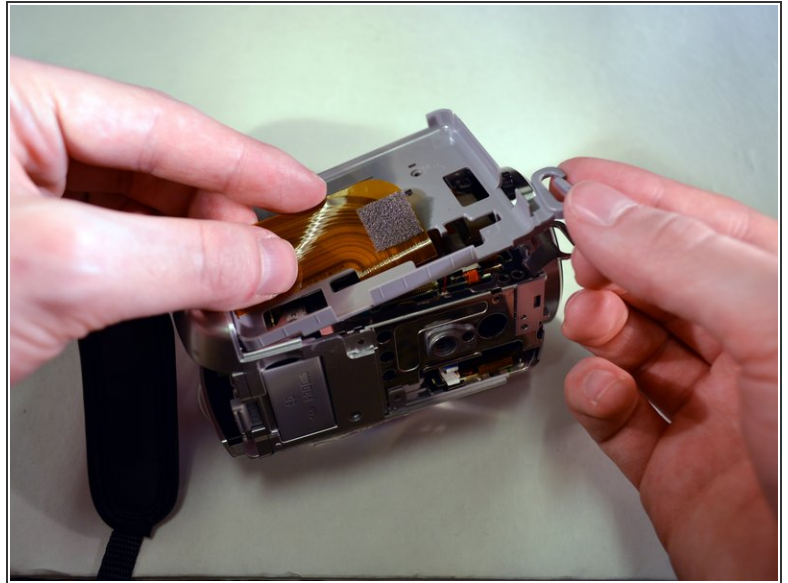
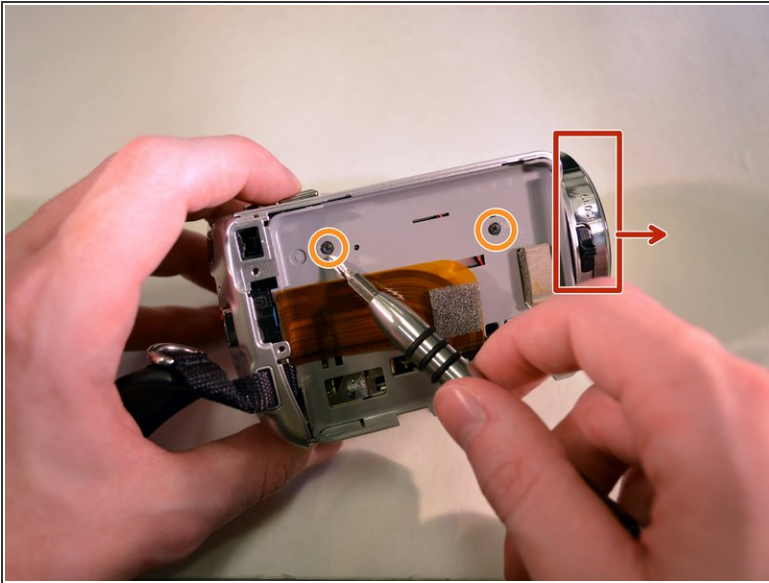
## Step 10



- Lay the device on its left side, with the front lens facing left (first photo).
- Remove the three visible 3mm Philips screws with the Phillips precision screwdriver (see 2nd photo).

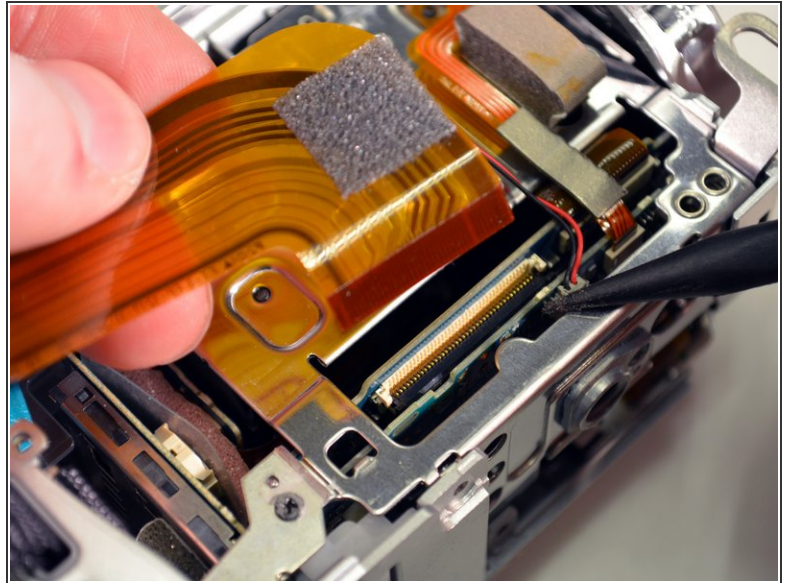
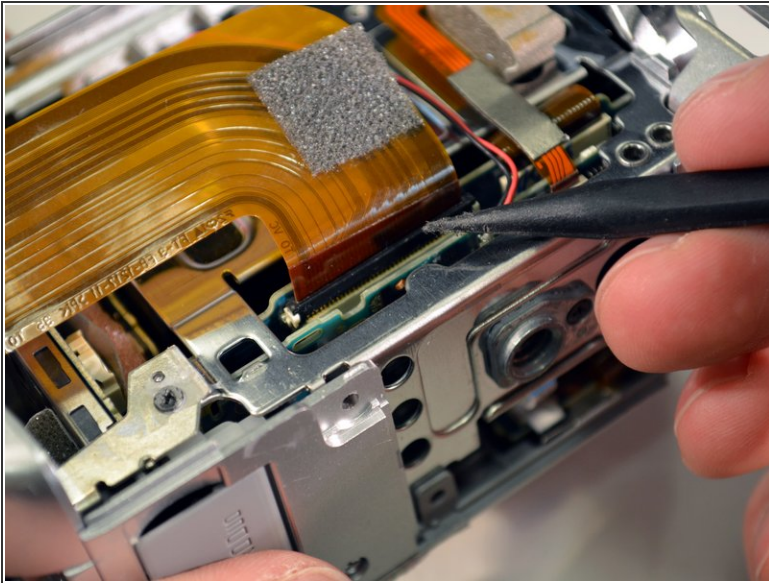


## Step 11



- Hold the device securely in your left hand with the front lens facing right.
- Remove the two black 3mm Philips screws with the screwdriver.
- ⓘ The grey HDD tray, on the right side of the Handycam, is now free.
- Remove the grey tray by carefully lifting it out.

## Step 12

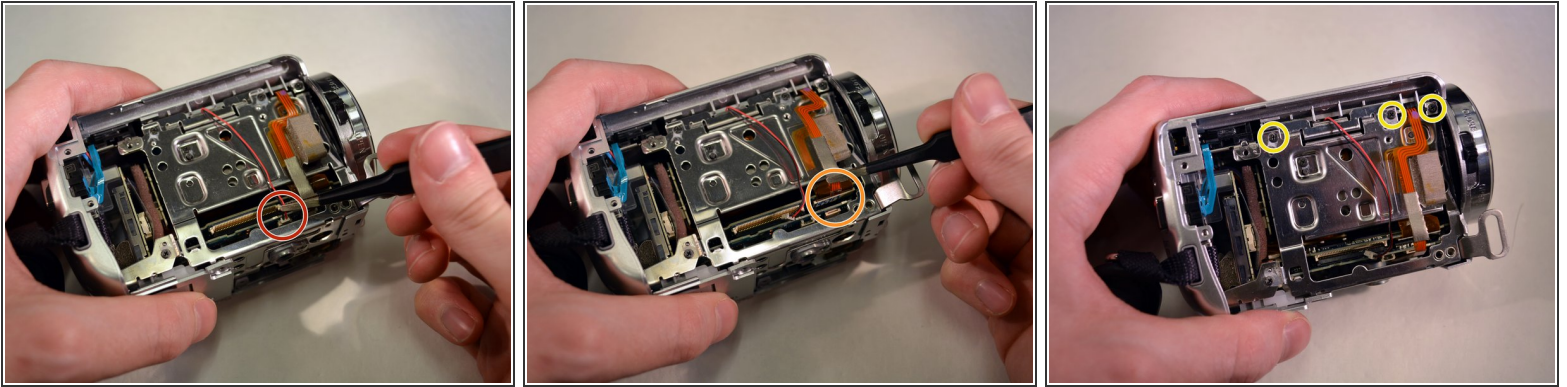


- Using the pointed black spudger, carefully open the little black clasp on the large ribbon wire port.

 **These clasps are known to be fragile.**

 **On reassembly, this wire and clasp can be troublesome to reinstall.**

## Step 13



- Use the blunt tweezers to unplug the red and black wire by pulling out and away./ **Provide a better close up of the picture.**
- Gently unplug the small ribbon wire./ **Provide a better close up of the picture.**
- Unscrew the top three 3mm Philips screws with the Phillips precision screwdriver. / **Unscrew the top three 3mm Philips screws with the Phillips precision screwdriver./Provide a better close up for this picture.**

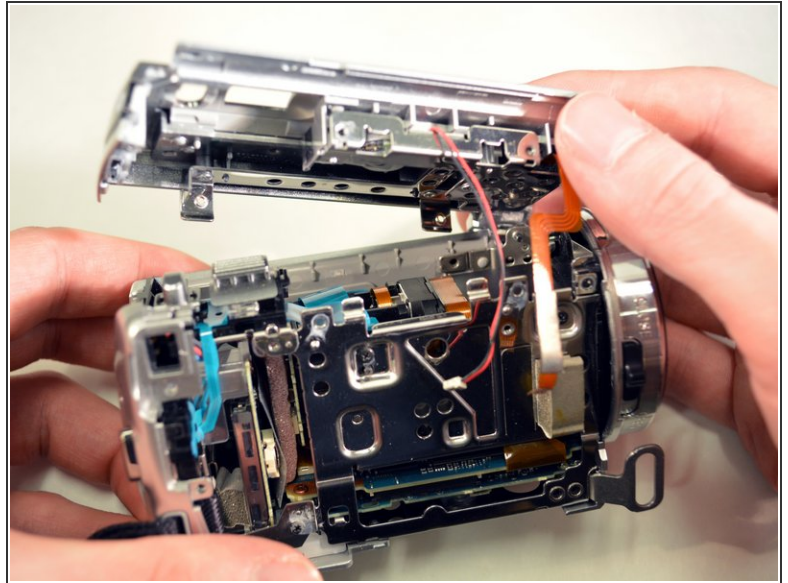
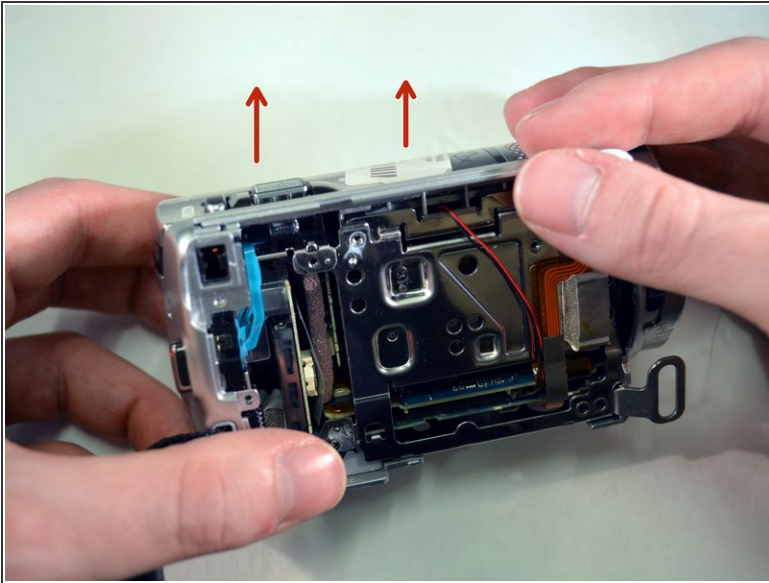
## Step 14



- On the back of the device, remove the top black 3mm Philips screw with the Phillips precision screwdriver./**On the back of the device, remove the top black 3mm Philips screw with the Phillips precision screwdriver.**
- ⓘ The top of the device is now free./**Make this a note and make it a different color from the step above.**

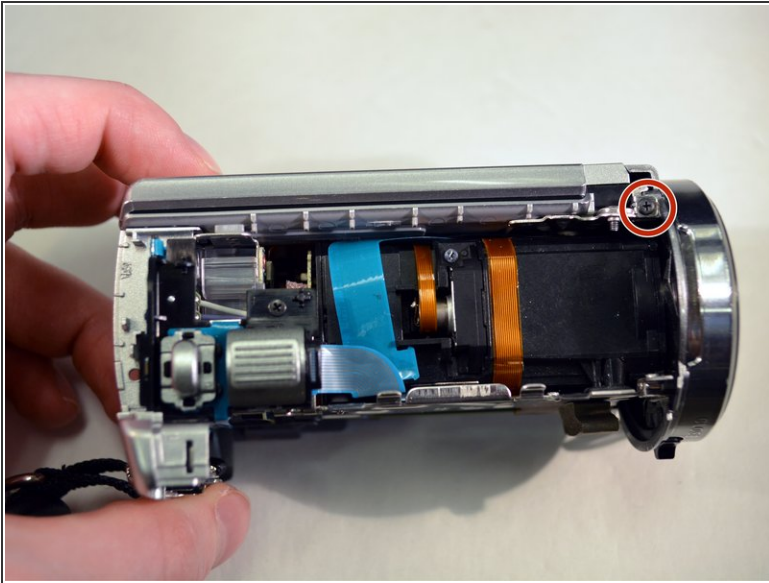


## Step 15



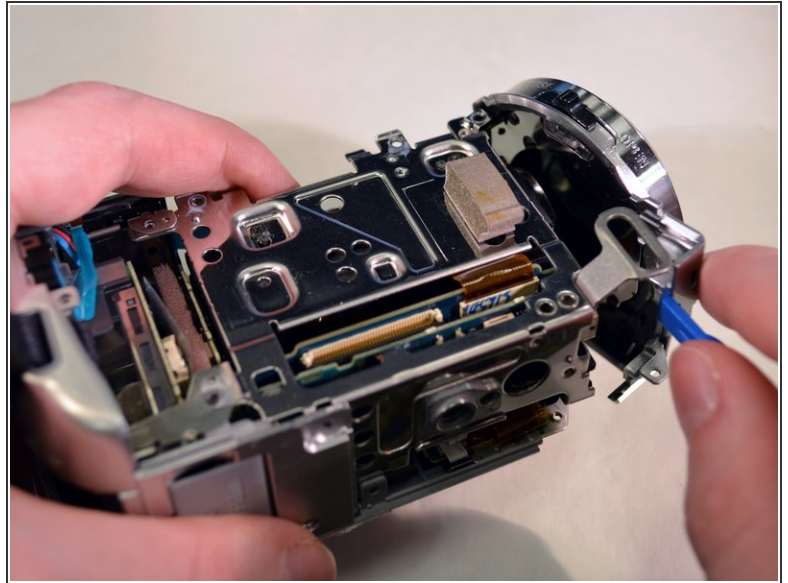
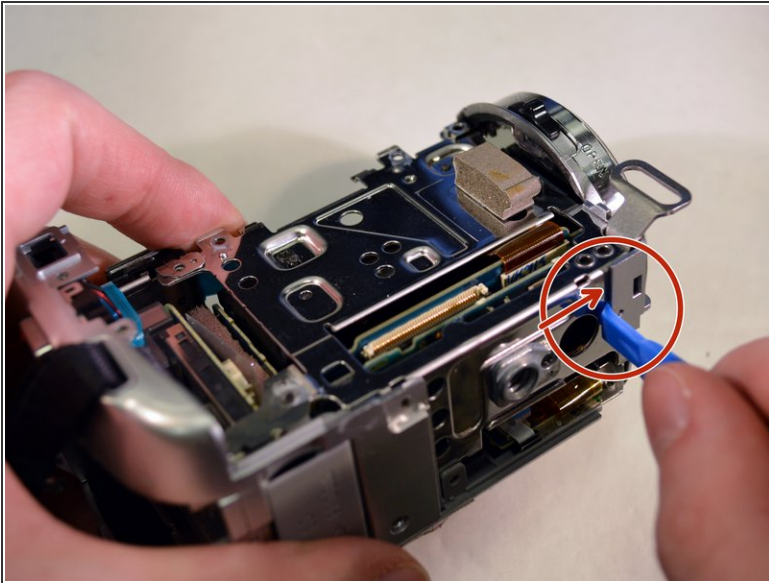
- Remove the top case panel of the device by lifting up and away. /**Edits are unnecessary for this step.**
- Set the top case panel aside. /**Set the device aside.**

## Step 16



- On the top of the device, unscrew the right 3mm Philips screw with the Phillips precision screwdriver/**Get a close up of the screw in this picture.**
- On the left side of the device, unscrew the bottom left 3mm Philips screw with the screwdriver./**Same thing with this picture. A close of the screw would help readers.**

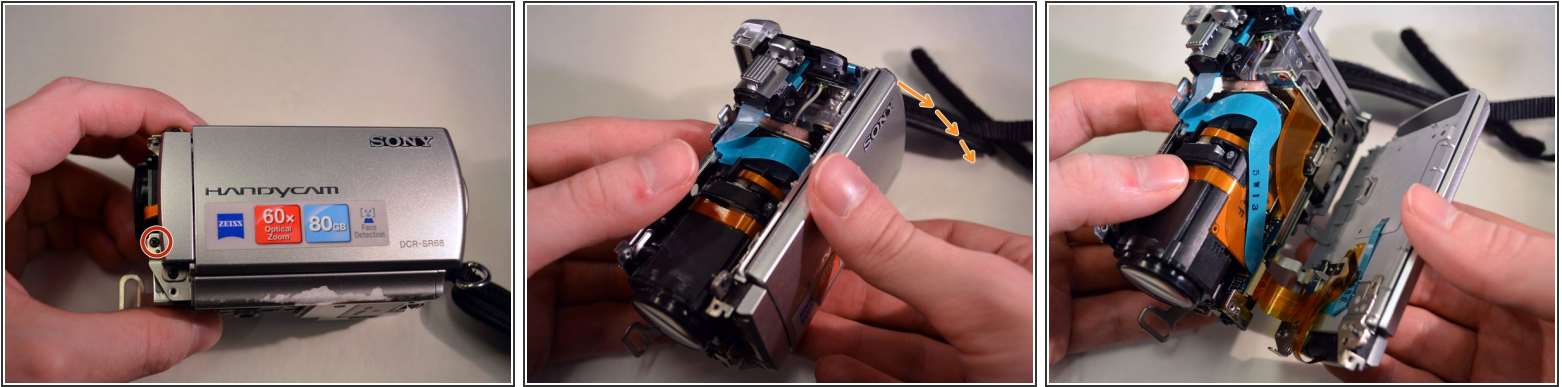
## Step 17



- Set the device facing forward, with its bottom down.
- While securing the device with your left hand, use gentle rightward pressure with a plastic opening tool to pop off the shutter assembly. To do this, position the plastic opening tool in the slot labeled in photo one. **A close up of the shutter assembly in the picture might help also.**

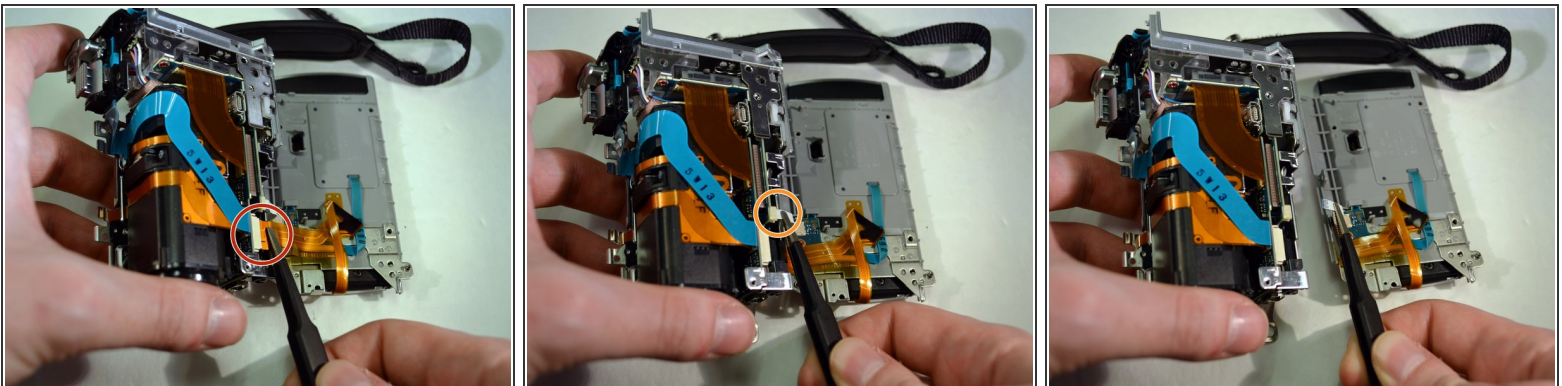


## Step 18



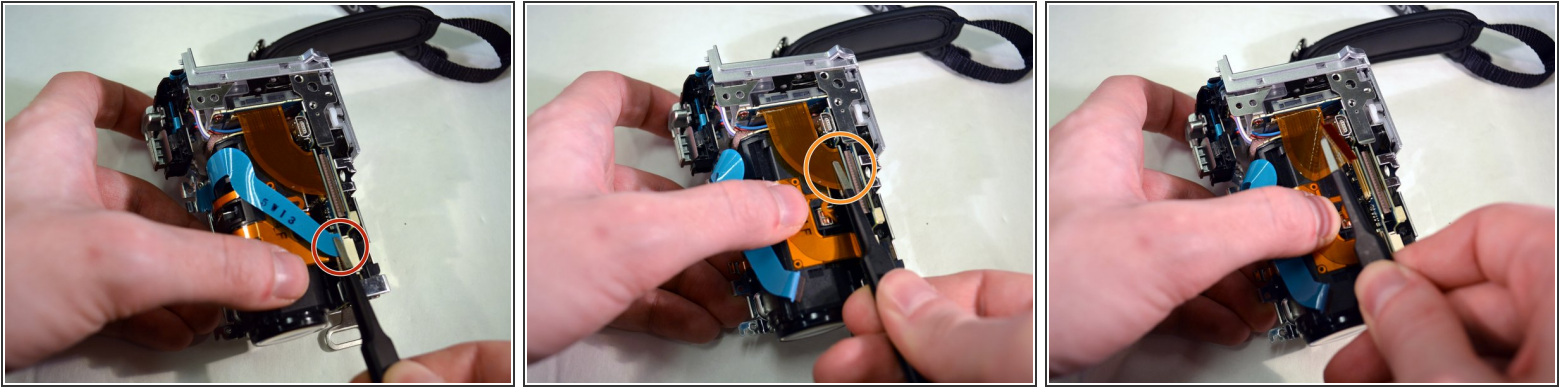
- On the left side of the device (with the front lens facing left), unscrew the left middle 3mm Philips screw with the screwdriver./ **A close up of the screw in the picture would be better.**
- Carefully pivot the dismantled piece of the device until the ribbon wires are fully exposed./ **Carefully pivot the dismantled piece of the device until the ribbon wires are fully exposed.**

## Step 19



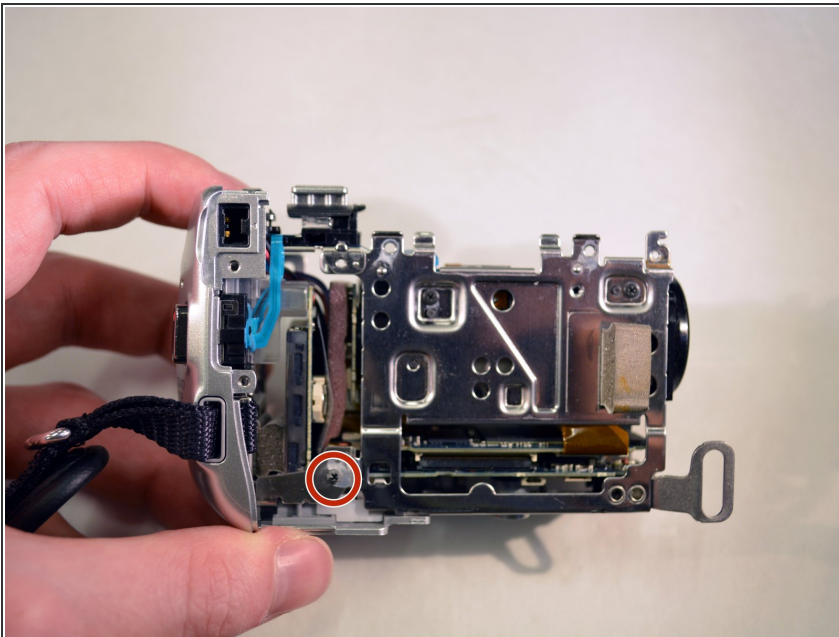
- Use the blunt tweezers to unplug the small orange ribbon wire./ **No edits necessary.**
- Use the same tweezers to unplug the small white ribbon wire./ **Make a close up of the small white ribbon wire in this picture.**
- ⓘ The left side of the device is now free./ **Make this a note/Note: The left side of the device is now free**
- Set the left side of the device in a secure place.

## Step 20



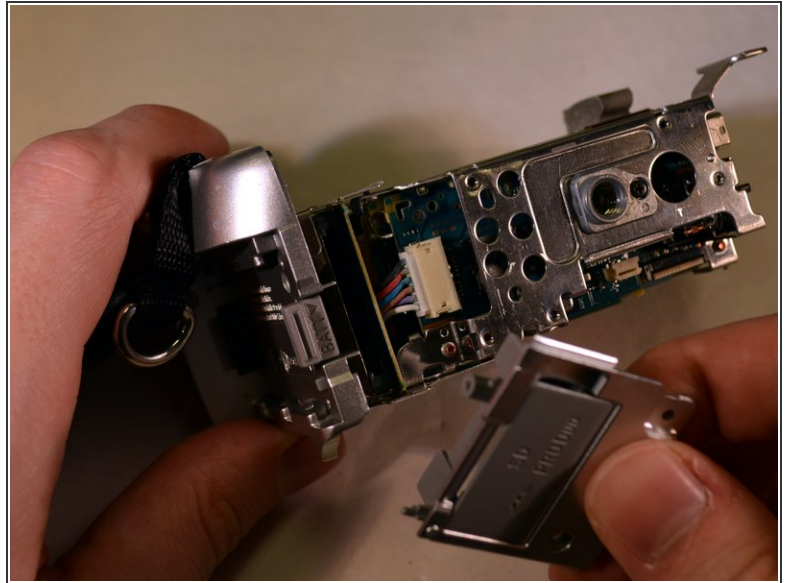
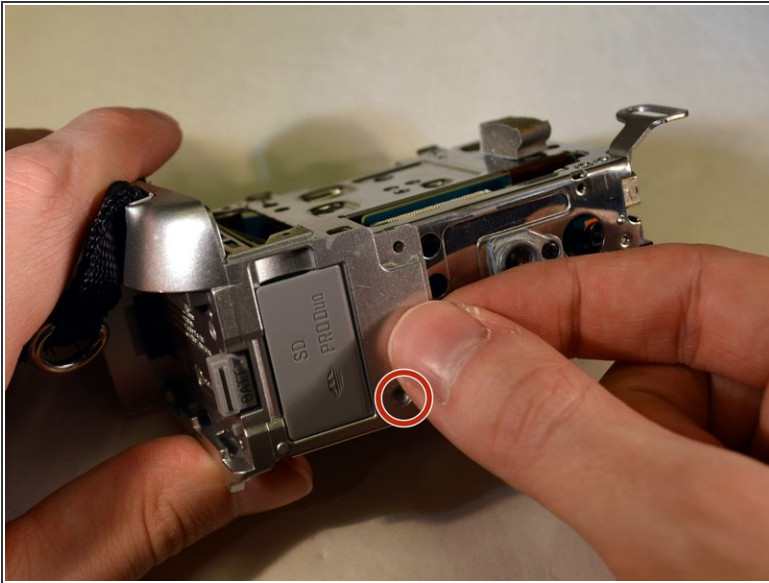
- Use the blunt tweezers to unplug the blue ribbon wire. **/No edits necessary.**
- Unplug the orange ribbon wire. **/no edits necessary.**

## Step 21



- Follow steps 1-14 for the Lens replacement. **/Follow steps 1-14 for the lens replacement.**
- Remove the bottom left 3mm Philips screw. **/Make a close up of the screw for this picture.**

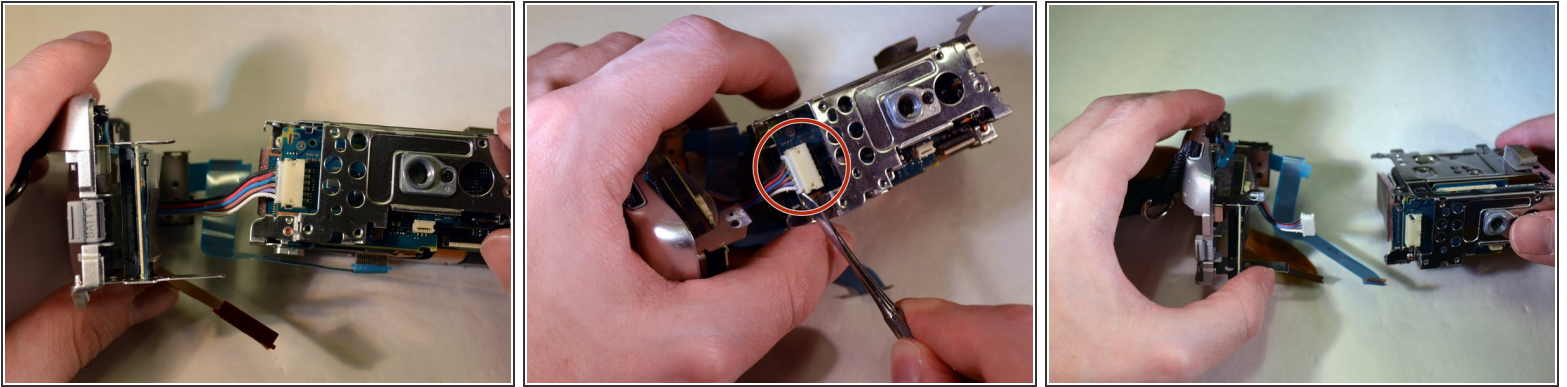
## Step 22



- On the bottom of the device, remove the last 3mm Philips screw on the last panel./ **Make a close up of the screw for this picture.**
- Remove the panel./**No edits necessary.**



## Step 23

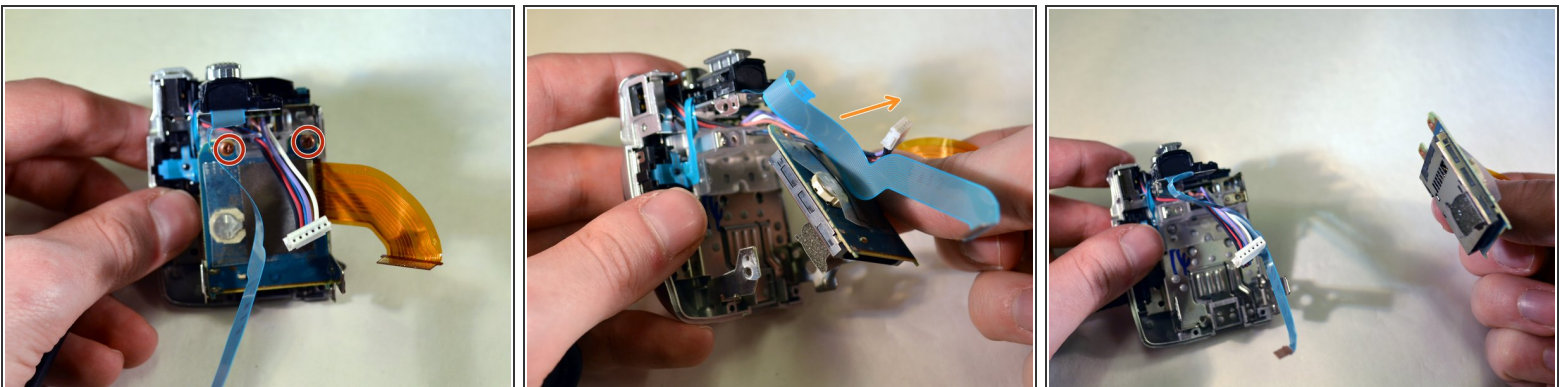


- Use a pointed metal spudger to pop the plug out of the socket. / **Make a close up of this plug in this picture.**

⚠ Maintain careful control of the pointed metal spudger. Be aware that the point is sharp and can cause injury.

i To separate the two pieces of the device, apply force downwards on the right piece to separate them.

## Step 24



- Unscrew the two brass 3mm Philips screws with the screwdriver. / **Make this picture a close up.**
- Carefully remove the SD card slot, once it's unfastened.
- **The SD card slot is now removed as shown in photo three.**

To reassemble your device, follow these instructions in reverse order in addition to the Lens Replacement Guide.