



Sony Handycam FDR-AX33 Panel Replacement

Use this guide to remove all the exterior panels of your Sony Handycam FDR-AX33 device.

Written By: Jacob Andreatta



INTRODUCTION

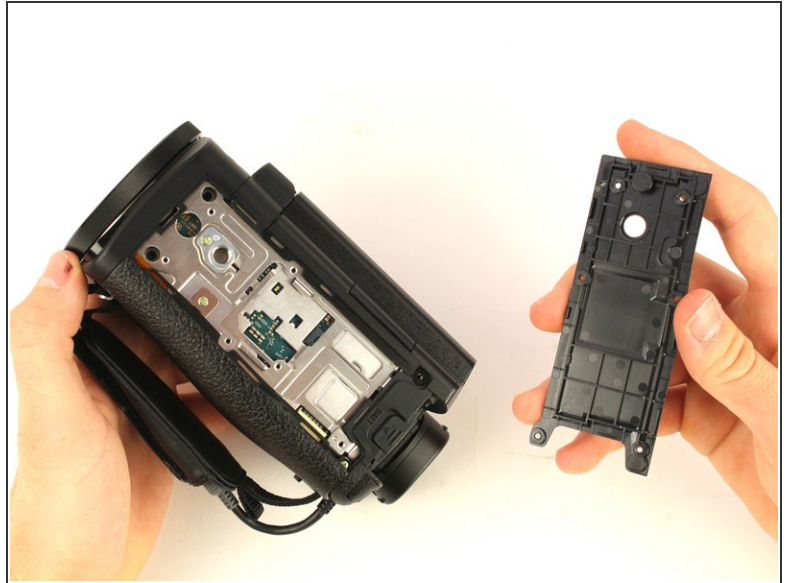
If you're having any issues with the Sony Handycam FDR-AX33, you'll need to access the inner workings of the camera. This guide will show you how to remove the outer panels of the device. Once these are removed, you'll be able to access the microphone, the inner circuits, and various buttons such as record and zoom.



TOOLS:

- [Phillips #00 Screwdriver](#) (1)
 - [iFixit Opening Tools](#) (1)
-

Step 1 — Panel



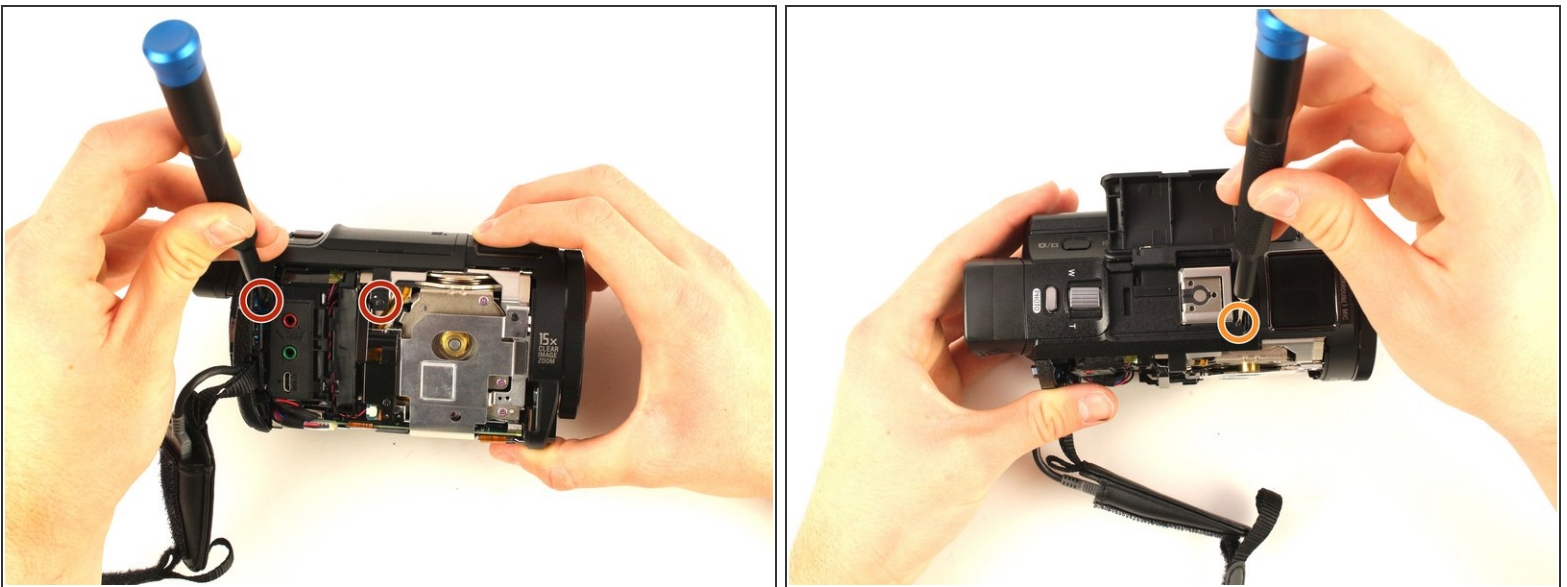
- ⓘ Remove the battery by pushing the latch towards the body of the camera. Push the battery down and pull it out.
- Remove the six black 4 mm Phillips #00 screws from the bottom panel of the camera.
- Pull off the bottom panel. It may be difficult, but tugging on it shouldn't cause harm to yourself or the device.
- ⓘ Be sure to un-velcro the handle strap.

Step 2



- Remove the 3 mm Phillips #00 screw from the bottom of the camera.
 - Remove the 4 mm Phillips #00 screw from the right panel.
 - Pull the right panel off. Again, it might be difficult, but pulling hard shouldn't harm you or the camera.
- i** You may have to use the opening tool to remove this panel.

Step 3



- Remove the two 4 mm Phillips #00 screws from the top right corner of the camera.
- Remove the 4 mm Phillips #00 screw from in front of the flash mount.

Step 4



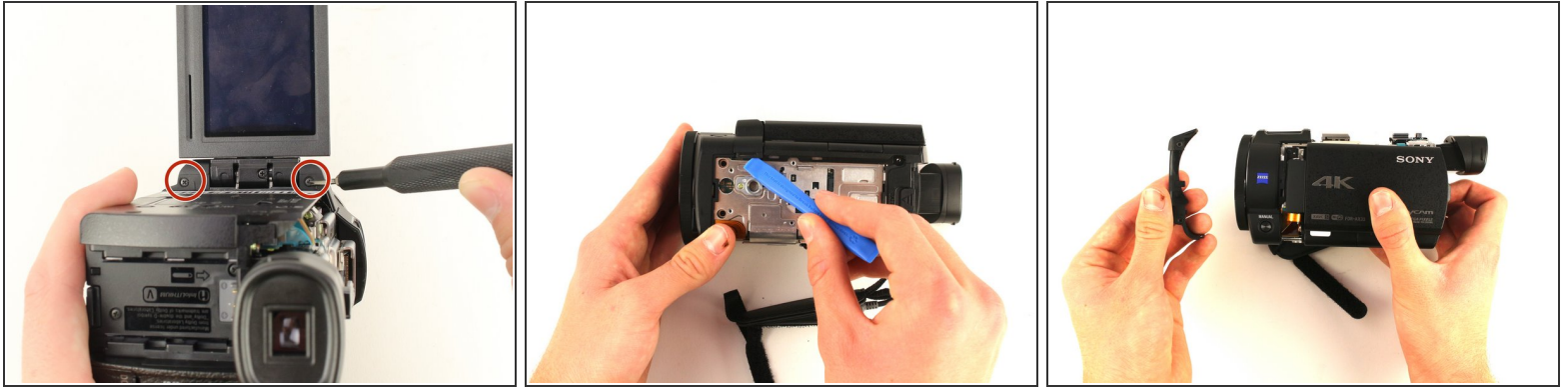
- Remove the 3 mm Phillips #00 screw from below the right side of the battery slot.
- Remove the black 5 mm Phillips #00 screw from the top of the battery slot.

Step 5



- Remove the three 4 mm Phillips #00 screws from the left panel underneath the display screen.
- ⓘ You'll need to extend the eyepiece by pulling it out from the body of the camera.
- Pull the top panel off of the device with the iFixit opening tool.

Step 6



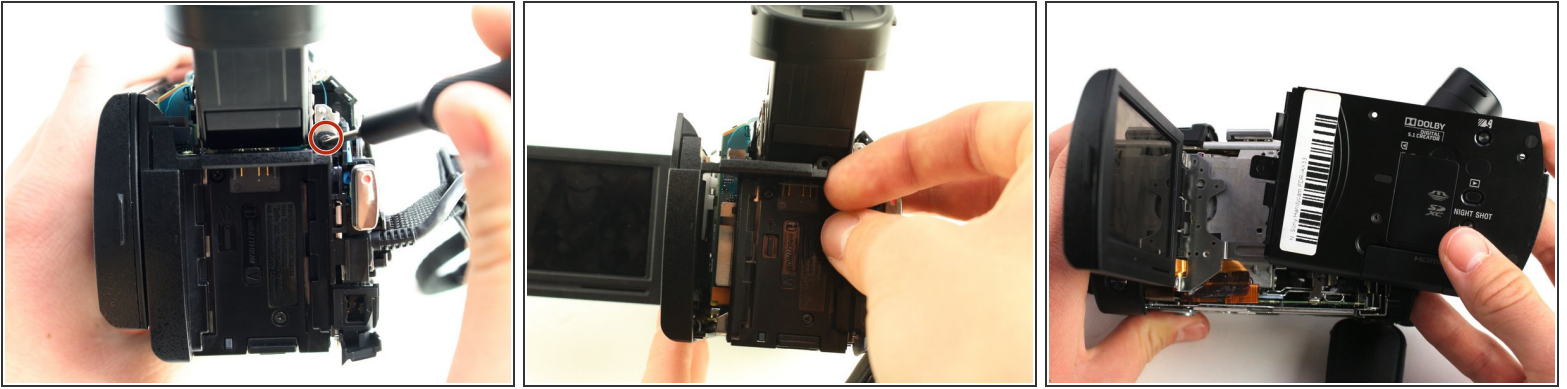
- Remove the top and bottom 4 mm Phillips #00 screws from the display screen hinge.
- Use the iFixit opening tool to remove the screen hinge.

Step 7



- Remove the 3 mm Phillips #00 screw from between the eyepiece and the panel directly to the right of the battery slot.
- ⓘ Angle the eyepiece up to reach the screw with the screwdriver.
- Take the panel directly to the right of the battery slot off of the camera.

Step 8



- Remove the 4 mm Phillips #00 screw above and to the right of the battery slot.
- Pry the left panel out at an angle by pushing the plastic slat between the battery slot and the eyepiece.
- Wiggle the left panel and pull it out gently.
- ⓘ The left panel can be hard to remove so make sure to apply a good amount of force, but be cautious to not harm yourself or the device.

To reassemble your device, follow these instructions in reverse order.