



# Sony Handycam HDR-CX380 Lens Cover Panel Replacement

Upon completion of this guide, you will have removed the lens cover panel from the front of the camera.

Written By: John Santoro



---

## INTRODUCTION

You will learn how to remove the lens cover panel without damaging your device.



### TOOLS:

- [Phillips #00 Screwdriver](#) (1)
  - [iFixit Opening Tools](#) (1)
-

## Step 1 — Battery



- Rotate your camera such that the underside is facing you and the lens is facing the ground.
- ⓘ You should be able to see the camera's label, and it should be rotated 90 degrees counterclockwise.

## Step 2



- Using your left thumb, push down the slider to the left of the SD card slot.
- ★ When inserting a new battery or reinserting the one you removed, you can ignore this step.

### Step 3



- Using your right index finger and thumb, pull the battery toward you and then away from the camera.

### Step 4 — Camera Shell



- Orient the camera with the battery side facing up.

## Step 5



- Remove the single 4.5 mm Phillips #00 screw.
- Remove the single 5.5 mm Phillips #00 screw.

## Step 6



- With the blue plastic opening tools, gently pry the plastic casing surrounding the start/stop button free.
- Remove the casing using your right thumb and index finger.

## Step 7



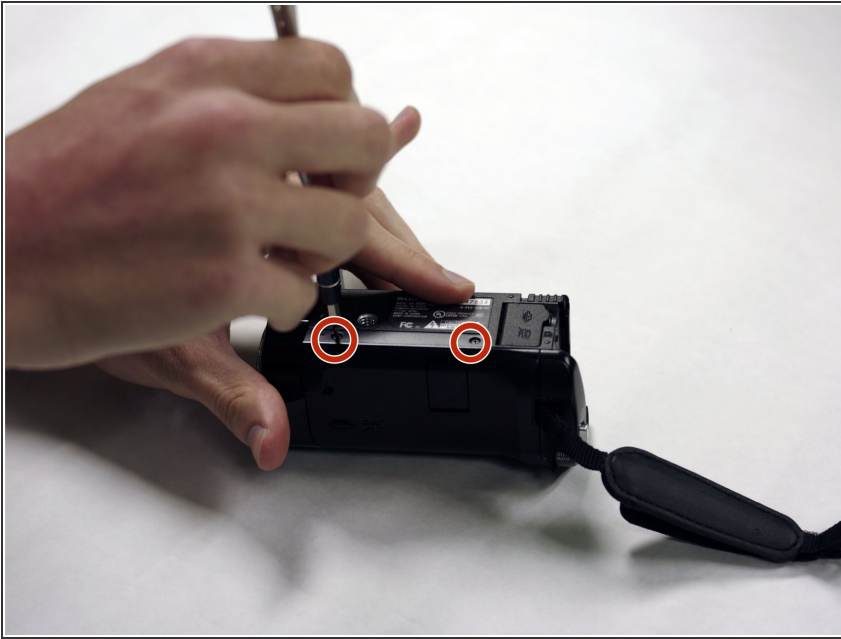
- Flip open the LCD panel to get to the side panel.
- Remove the three 5.5 mm Phillips #00 screws.

## Step 8



- Turn the camera around to the grip side and remove the 5.5 mm Phillips Head screw using your J00 Phillips Head screwdriver.

## Step 9



- With the bottom of the camera facing up, remove the two 5.5mm Phillips #00 screws.

## Step 10



- Orient the camera so the bottom is facing you.
- Use the blue plastic opening tools to gently ease the camera shell off of the camera.
- Rotate the camera so the LCD side panel is facing you and gently pry the shell off from the camera.

## Step 11 — Lens Cover Panel



- Orient the camera such that the lens is facing to your left.
- Using your right hand to hold the camera, gently remove the lens panel from the camera with your left hand.
- ⓘ The camera should be oriented with the lens pointing to your left.

To reassemble your device, follow these instructions in reverse order.