



# Sony Handycam HDR-CX380 Lens Replacement

This guide will show you to remove the lens.

Written By: Zackary Williams



---

## INTRODUCTION

Removing and replacing the lens is a very simple and easy task.



### TOOLS:

- [iFixit Opening Tools](#) (1)
  - [Screwdriver J00 Phillips Head](#) (1)
-

## Step 1 — Battery



- Rotate your camera such that the underside is facing you and the lens is facing the ground.

**i** You should be able to see the camera's label, and it should be rotated 90 degrees counterclockwise.

## Step 2



- Using your left thumb, push down the slider to the left of the SD card slot.
- ★** When inserting a new battery or reinserting the one you removed, you can ignore this step.

### Step 3



- Using your right index finger and thumb, pull the battery toward you and then away from the camera.

### Step 4 — Camera Shell



- Orient the camera with the battery side facing up.

## Step 5



- Remove the single 4.5 mm Phillips #00 screw.
- Remove the single 5.5 mm Phillips #00 screw.

## Step 6



- With the blue plastic opening tools, gently pry the plastic casing surrounding the start/stop button free.
- Remove the casing using your right thumb and index finger.



## Step 7



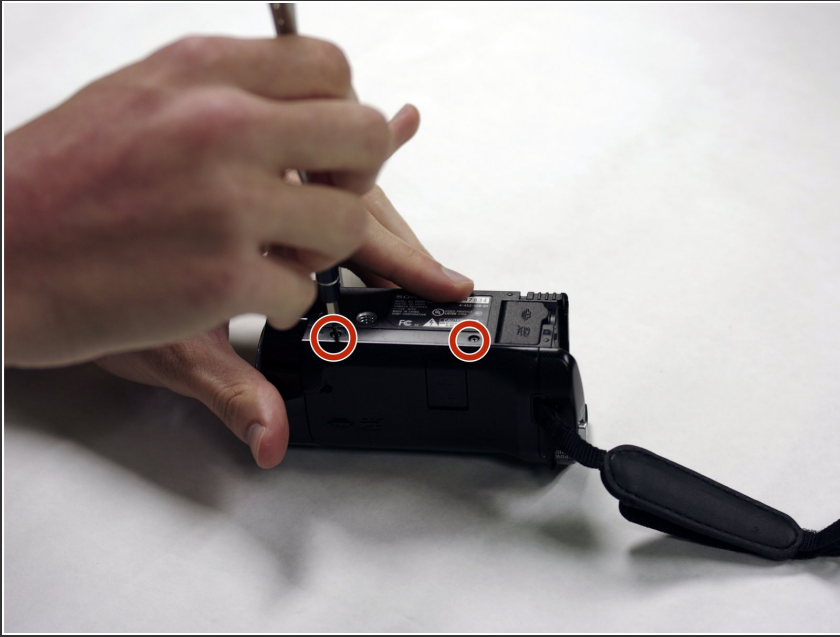
- Flip open the LCD panel to get to the side panel.
- Remove the three 5.5 mm Phillips #00 screws.

## Step 8



- Turn the camera around to the grip side and remove the 5.5 mm Phillips Head screw using your J00 Phillips Head screwdriver.

## Step 9



- With the bottom of the camera facing up, remove the two 5.5mm Phillips #00 screws.

## Step 10



- Orient the camera so the bottom is facing you.
- Use the blue plastic opening tools to gently ease the camera shell off of the camera.
- Rotate the camera so the LCD side panel is facing you and gently pry the shell off from the camera.

## Step 11 — Lens Cover Panel



- Orient the camera such that the lens is facing to your left.
  - Using your right hand to hold the camera, gently remove the lens panel from the camera with your left hand.
- ⓘ The camera should be oriented with the lens pointing to your left.

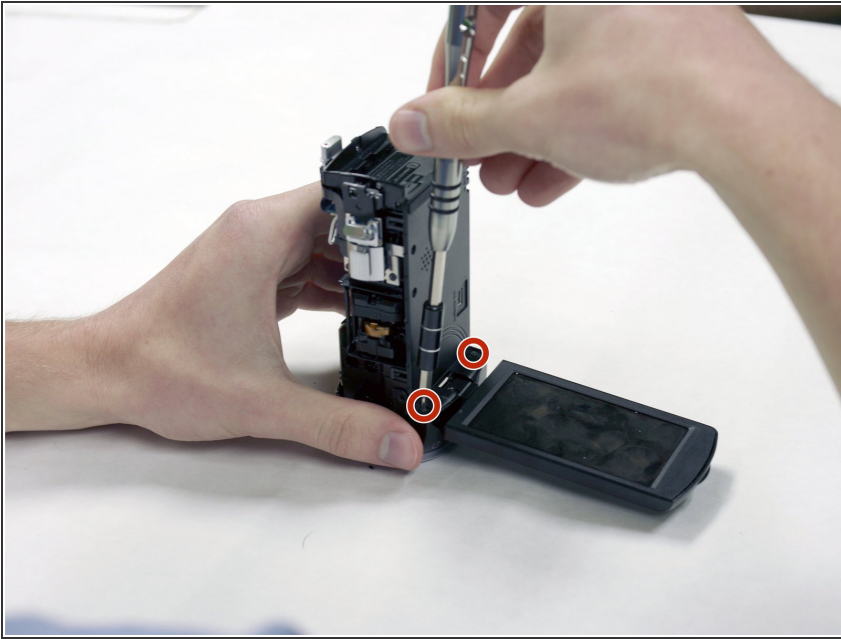
## Step 12 — Shutter Assembly



- Rotate the camera so that it is upright and the lens is pointed to your left.
- Using your right hand to hold the screwdriver and your left to hold the camera, remove the single 5.5 mm Phillips #00 screw from on the top of the shutter assembly.

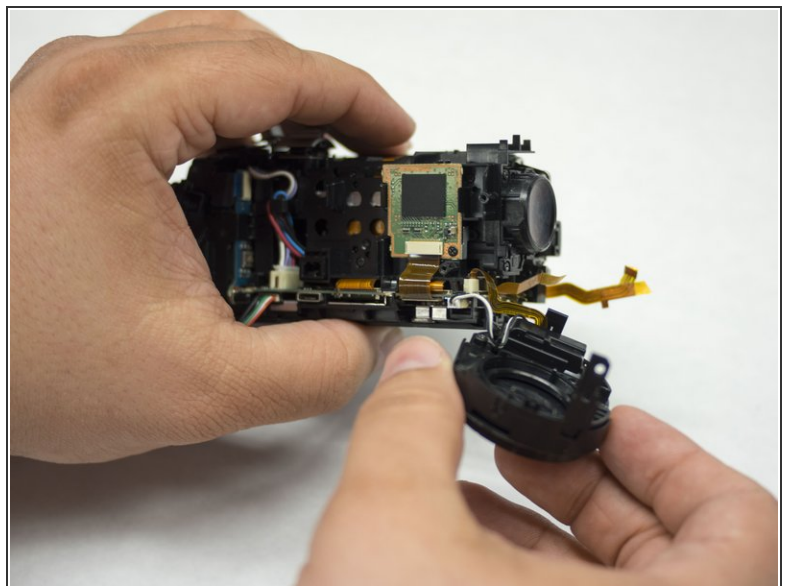
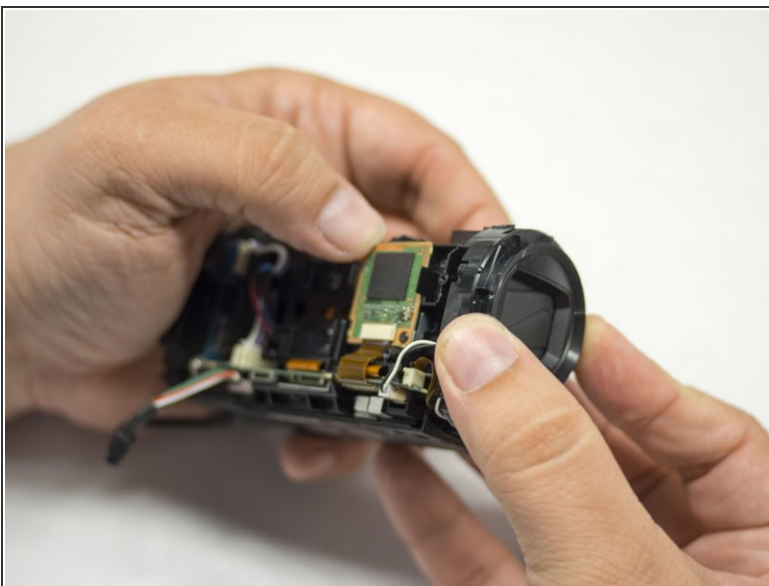


## Step 13



- Rotate the camera such that the lens is pointed downward and the LCD screen points to your right.
- Remove the two Phillips #00 screws from the LCD screen's hinge.

## Step 14

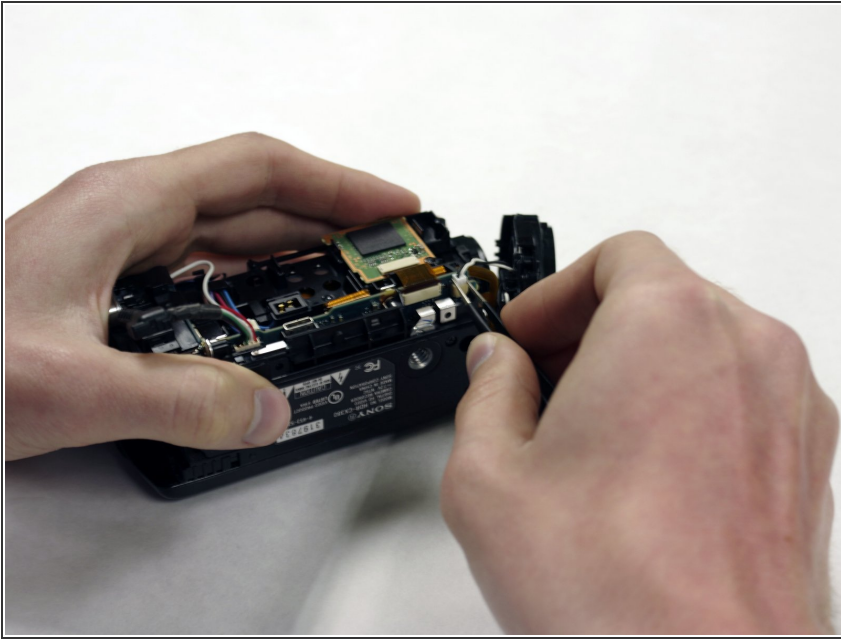


- Orient the camera such that it is upright and the lens is facing to your right.
- Using your left hand to hold the camera, gently remove the shutter assembly from the hull with your right hand.

**i** If you are only trying to remove the lens, you do not need to perform the next two steps.

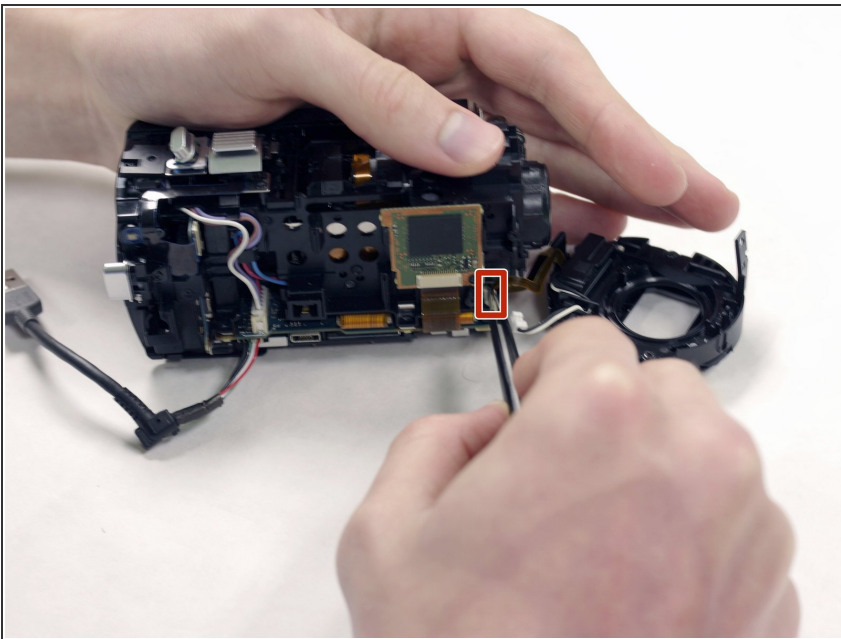
This document was generated on 2019-09-20 05:59:57 AM (MST).

## Step 15



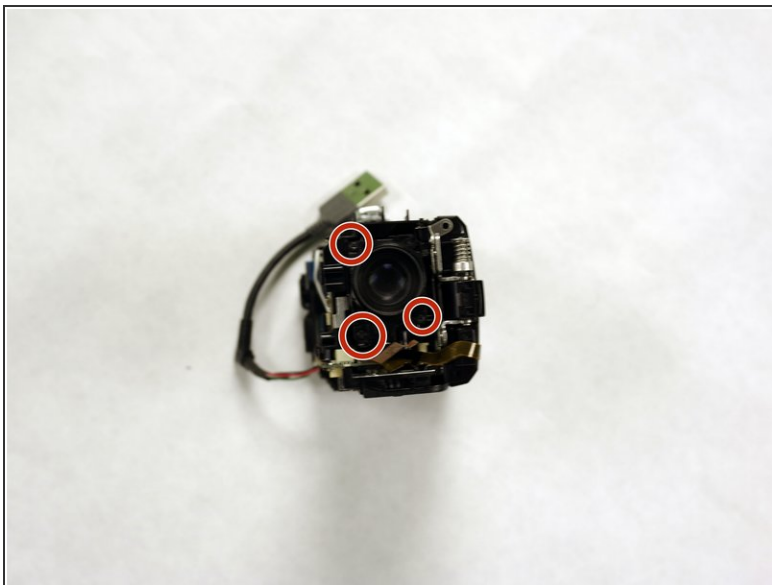
- Orient the camera such that the bottom is facing toward you and the lens is facing to your right.
- Using your metal tweezers, gently remove the wire harness connecting the shutter assembly to the motherboard.

## Step 16



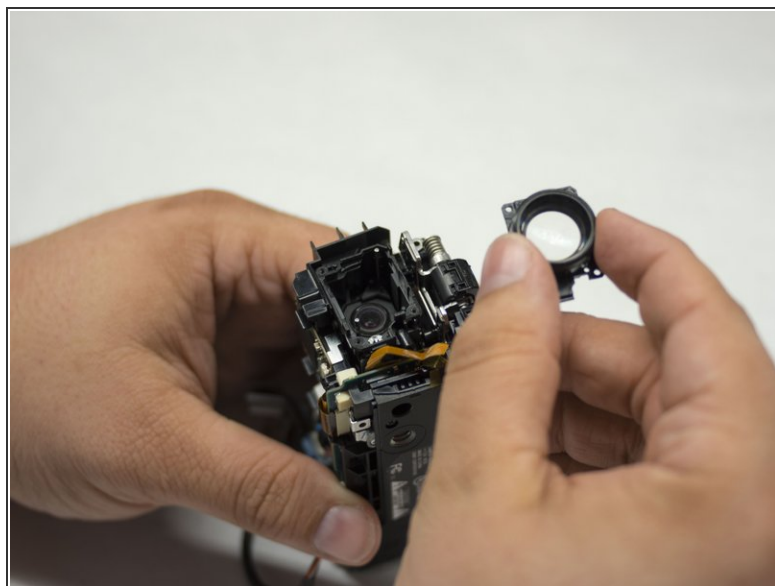
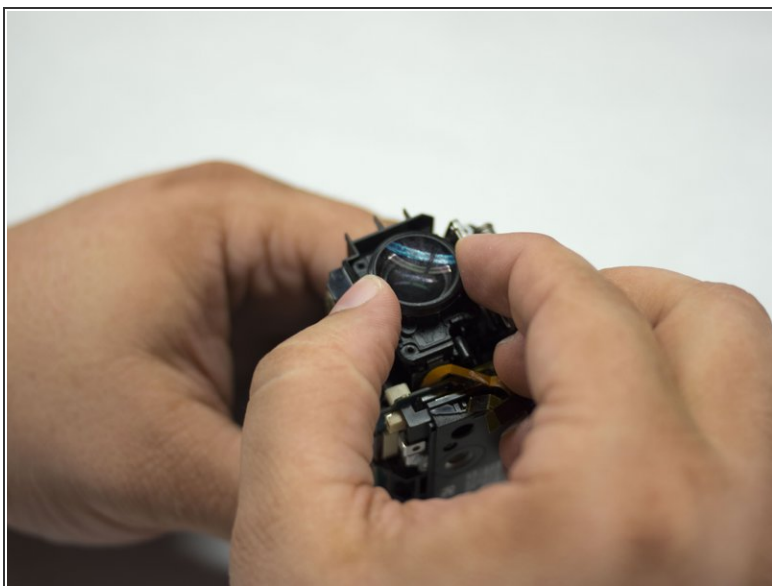
- Rotate the camera so that it is upright and the lens is facing to your right.
  - Remove the ribbon cable connecting the shutter assembly to the motherboard using your metal tweezers.
- ⚠ Be sure to pull the ribbon cable gently, as ribbon cables are easy to damage and can require soldering to repair.

## Step 17 — Lens



- Remove the three 5.5mm Phillips #00 screws holding the lens in.

## Step 18



- Gently pull the lens up from the camera.

To reassemble your device, follow these instructions in reverse order.