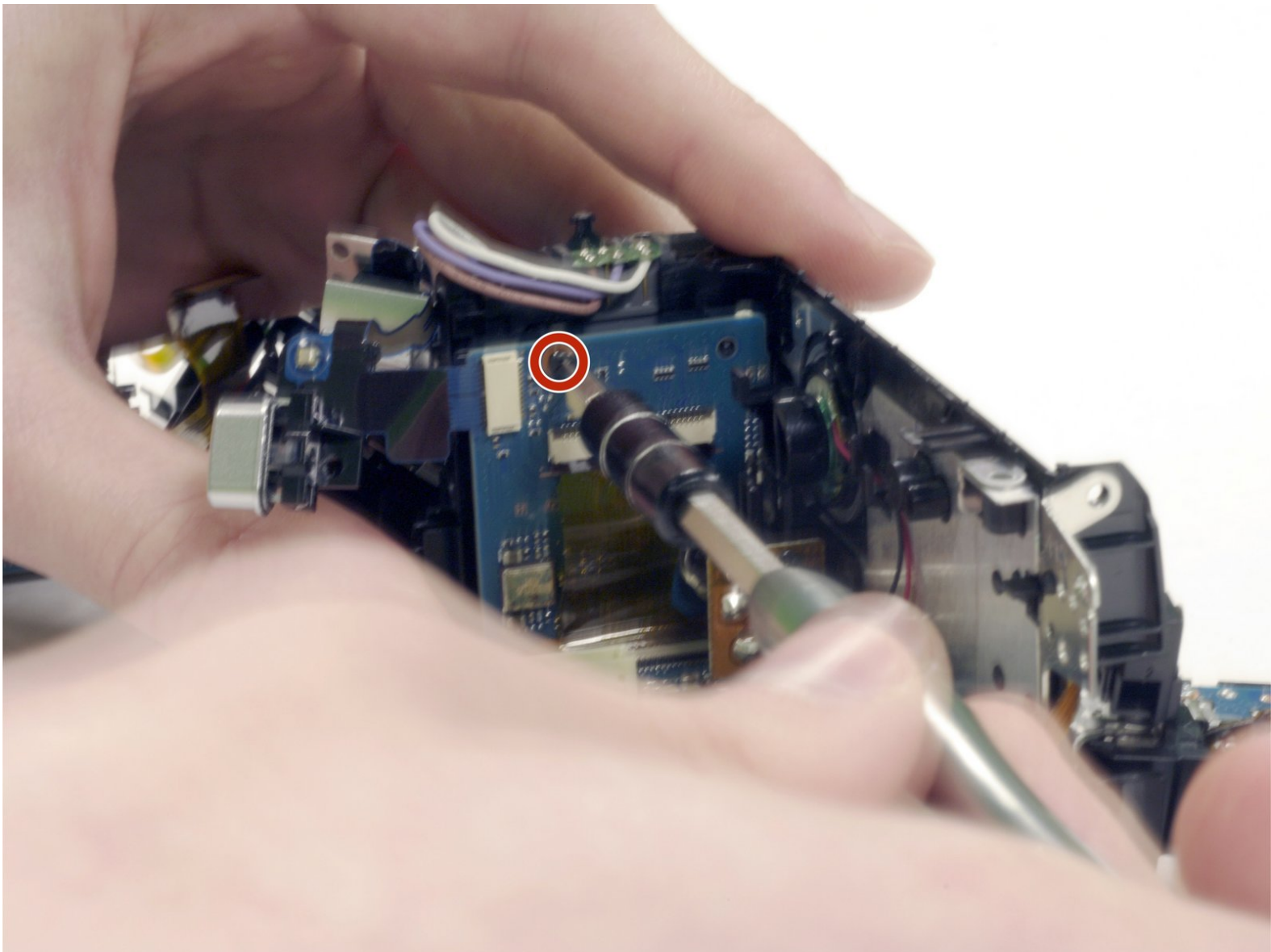




Sony Handycam HDR-CX380 Motherboard Replacement

Using this guide, you will be able to replace the motherboard. Be sure to follow all of the prerequisite guides.

Written By: John Santoro



INTRODUCTION

Removing the motherboard can be very difficult, as there are many sensitive electronic circuits. Plan to spend between 1/2 an hour to an hour to remove all the screws and disconnect the circuitry.

TOOLS:

- [Phillips #00 Screwdriver](#) (1)
 - [Phillips #000 Screwdriver](#) (1)
 - [Tweezers](#) (1)
 - [plastic/non conductive tweezers \(optional\)](#) (1)
-

Step 1 — Battery



- Rotate your camera such that the underside is facing you and the lens is facing the ground.
- ⓘ You should be able to see the camera's label, and it should be rotated 90 degrees counterclockwise.

Step 2



- Using your left thumb, push down the slider to the left of the SD card slot.
- ★ When inserting a new battery or reinserting the one you removed, you can ignore this step.

Step 3



- Using your right index finger and thumb, pull the battery toward you and then away from the camera.

Step 4 — Camera Shell



- Orient the camera with the battery side facing up.

Step 5



- Remove the single 4.5 mm Phillips #00 screw.
- Remove the single 5.5 mm Phillips #00 screw.

Step 6



- With the blue plastic opening tools, gently pry the plastic casing surrounding the start/stop button free.
- Remove the casing using your right thumb and index finger.

Step 7



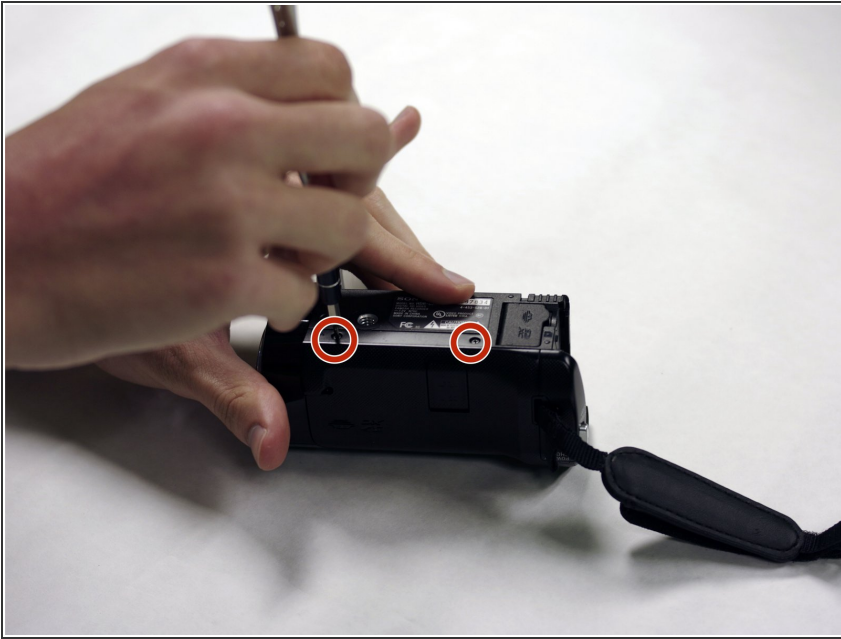
- Flip open the LCD panel to get to the side panel.
- Remove the three 5.5 mm Phillips #00 screws.

Step 8



- Turn the camera around to the grip side and remove the 5.5 mm Phillips Head screw using your J00 Phillips Head screwdriver.

Step 9



- With the bottom of the camera facing up, remove the two 5.5mm Phillips #00 screws.

Step 10



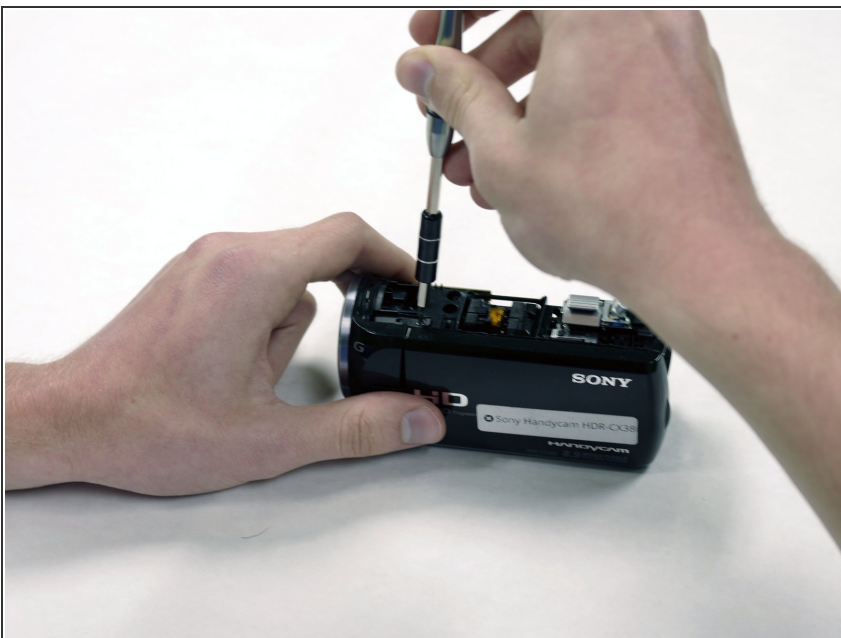
- Orient the camera so the bottom is facing you.
- Use the blue plastic opening tools to gently ease the camera shell off of the camera.
- Rotate the camera so the LCD side panel is facing you and gently pry the shell off from the camera.

Step 11 — Lens Cover Panel



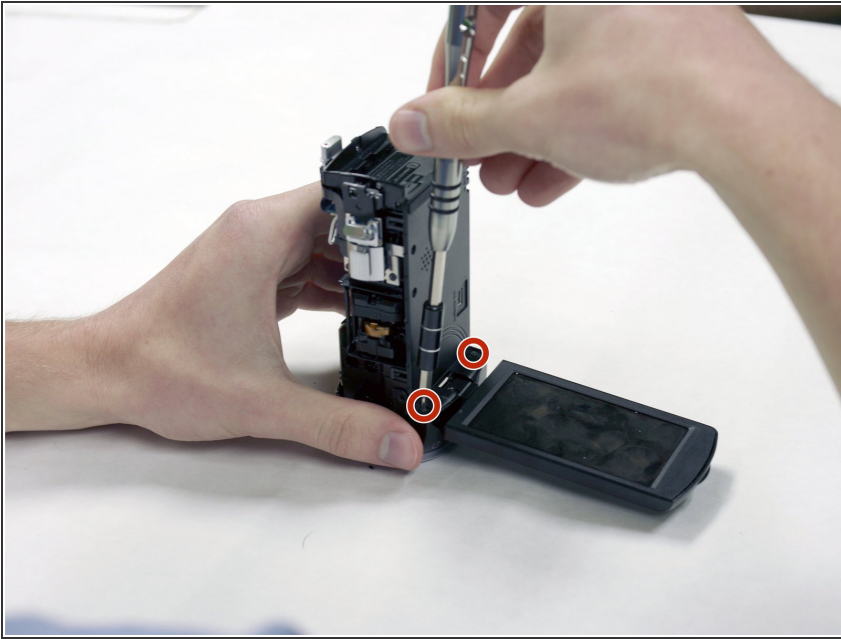
- Orient the camera such that the lens is facing to your left.
- Using your right hand to hold the camera, gently remove the lens panel from the camera with your left hand.
- ⓘ The camera should be oriented with the lens pointing to your left.

Step 12 — Shutter Assembly



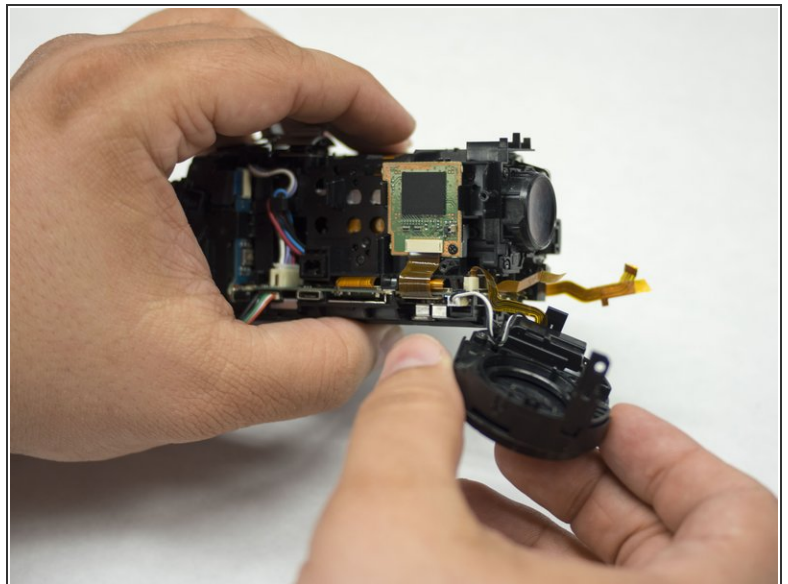
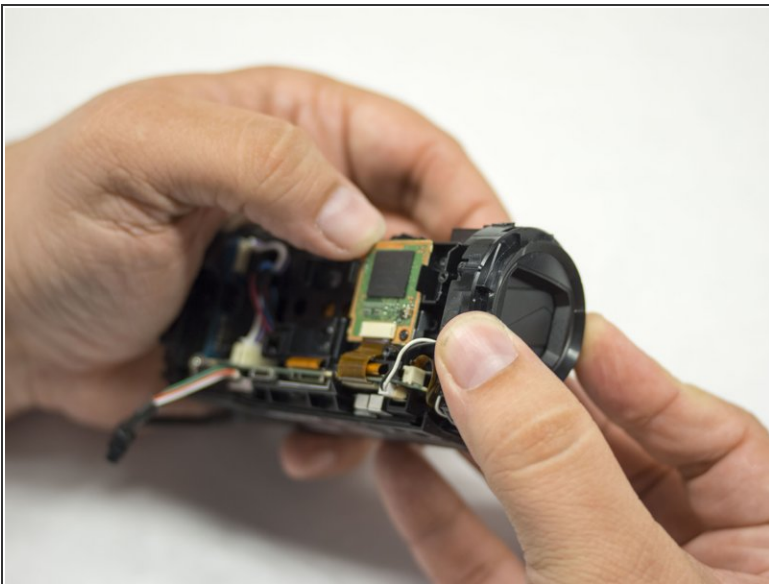
- Rotate the camera so that it is upright and the lens is pointed to your left.
- Using your right hand to hold the screwdriver and your left to hold the camera, remove the single 5.5 mm Phillips #00 screw from on the top of the shutter assembly.

Step 13



- Rotate the camera such that the lens is pointed downward and the LCD screen points to your right.
- Remove the two Phillips #00 screws from the LCD screen's hinge.

Step 14

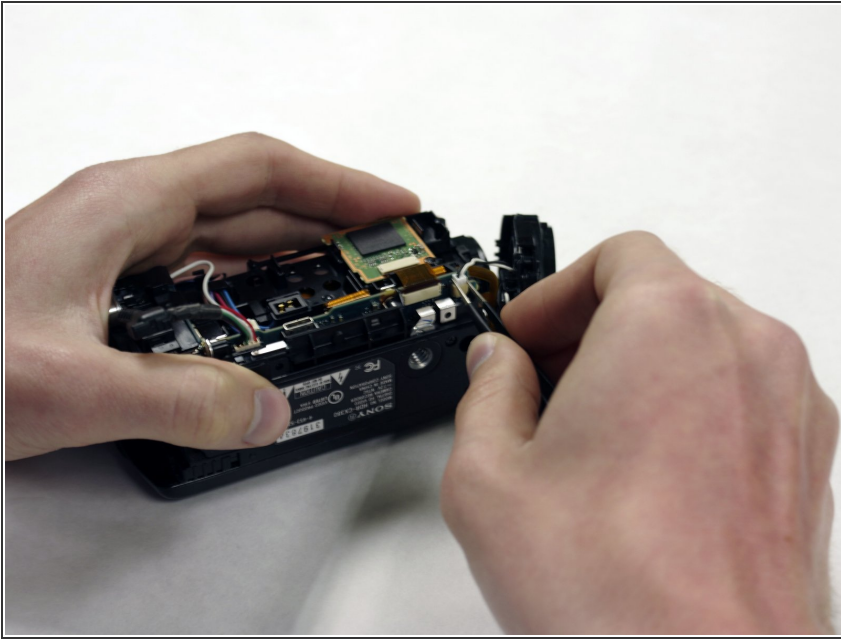


- Orient the camera such that it is upright and the lens is facing to your right.
- Using your left hand to hold the camera, gently remove the shutter assembly from the hull with your right hand.

i If you are only trying to remove the lens, you do not need to perform the next two steps.

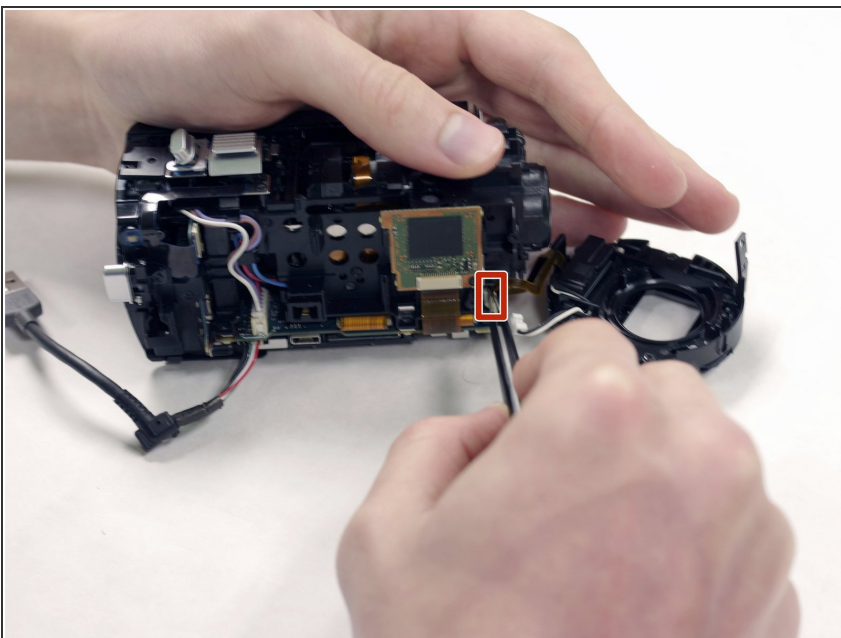
This document was generated on 2019-09-28 05:32:30 AM (MST).

Step 15



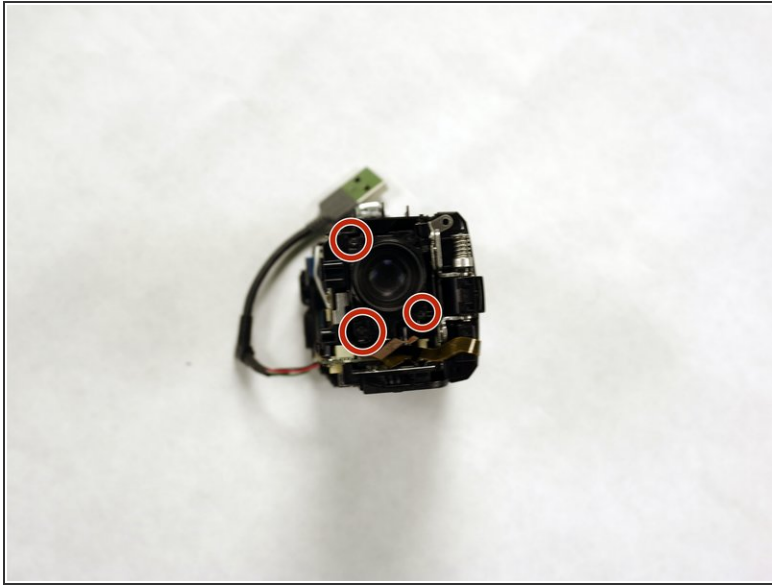
- Orient the camera such that the bottom is facing toward you and the lens is facing to your right.
- Using your metal tweezers, gently remove the wire harness connecting the shutter assembly to the motherboard.

Step 16



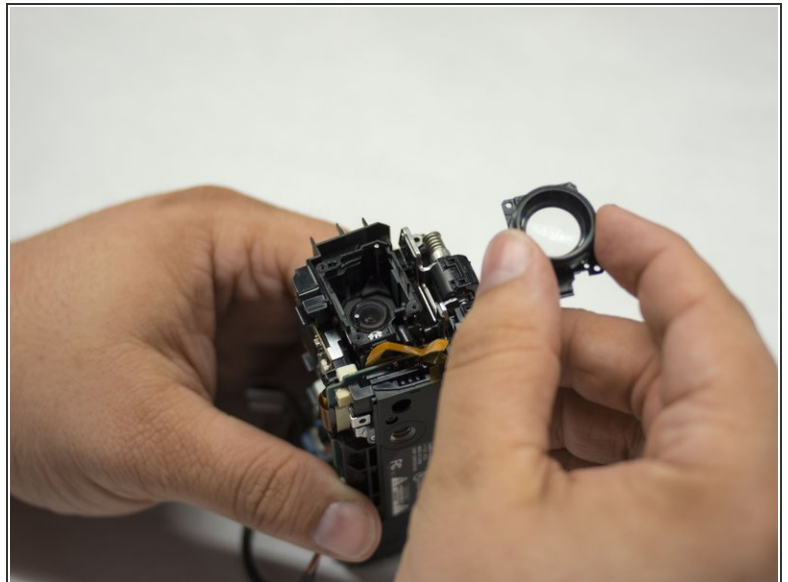
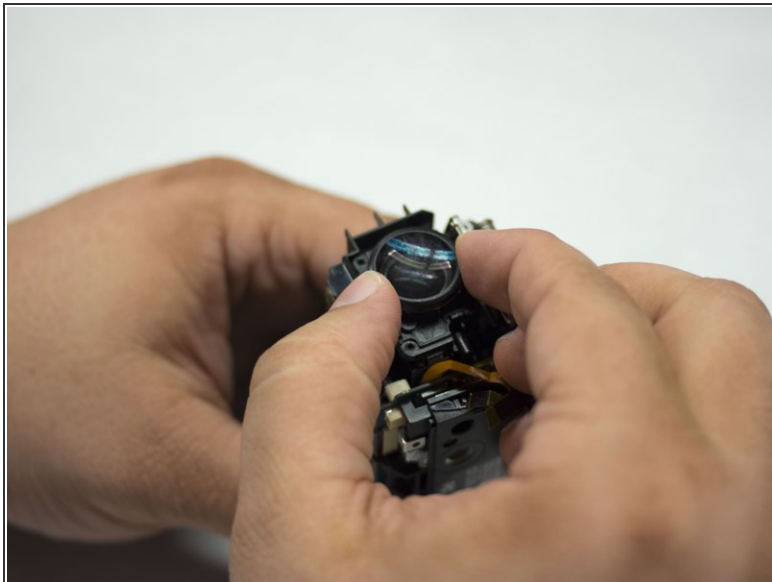
- Rotate the camera so that it is upright and the lens is facing to your right.
 - Remove the ribbon cable connecting the shutter assembly to the motherboard using your metal tweezers.
- ⚠ Be sure to pull the ribbon cable gently, as ribbon cables are easy to damage and can require soldering to repair.

Step 17 — Lens



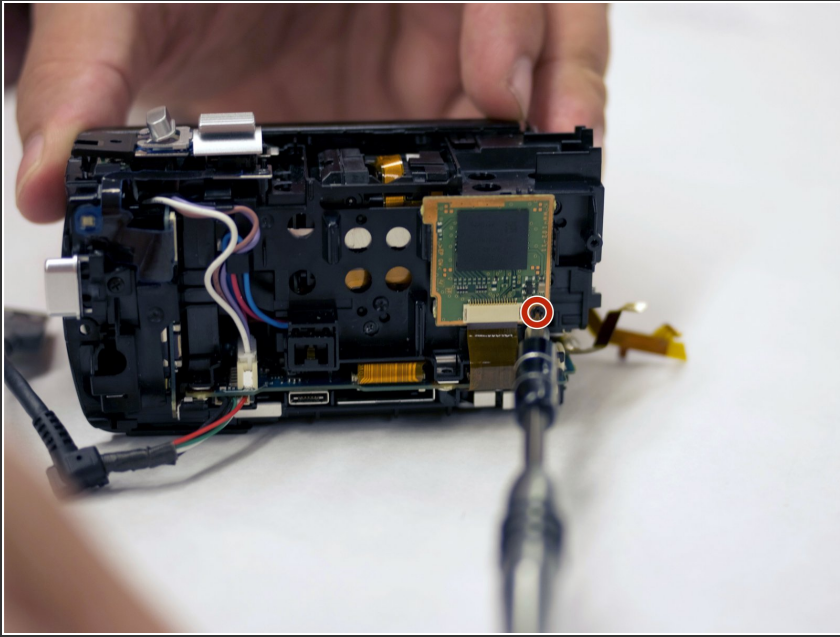
- Remove the three 5.5mm Phillips #00 screws holding the lens in.

Step 18



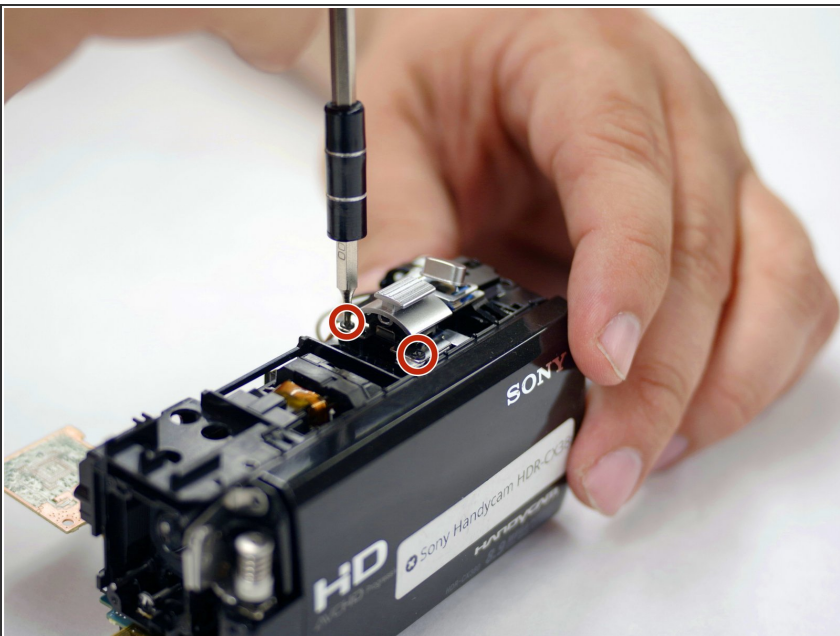
- Gently pull the lens up from the camera.

Step 19 — Lens Assembly



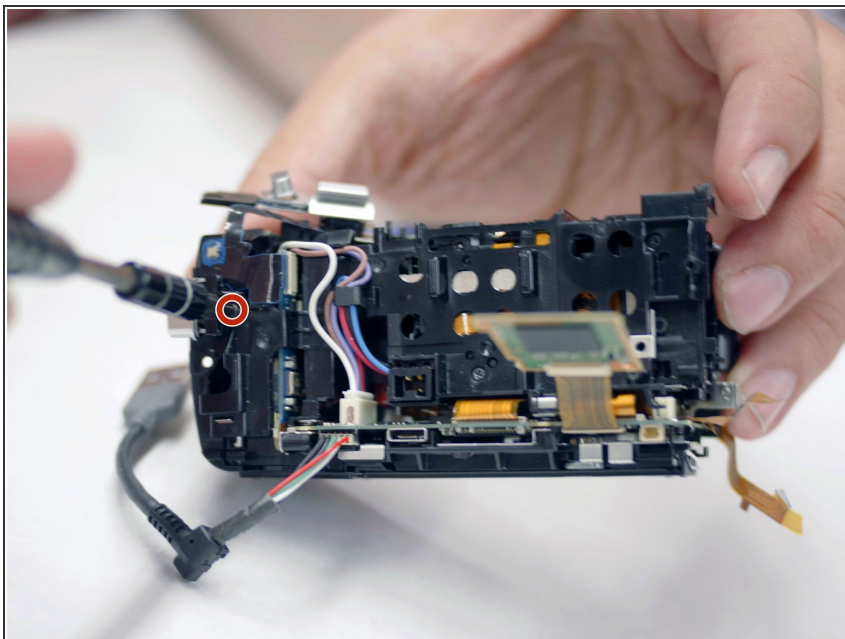
- With the right side of the camera facing toward you, remove the single 5.5 mm Phillips #00 screw.

Step 20



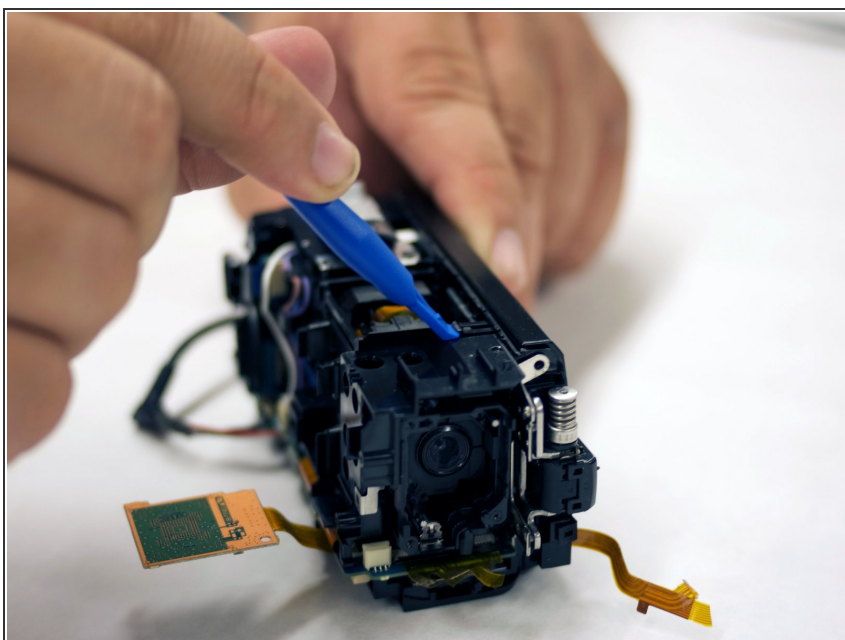
- With the back of the LCD screen facing toward you, remove the two 5.5 mm Phillips #00 screws from the zoom button.

Step 21



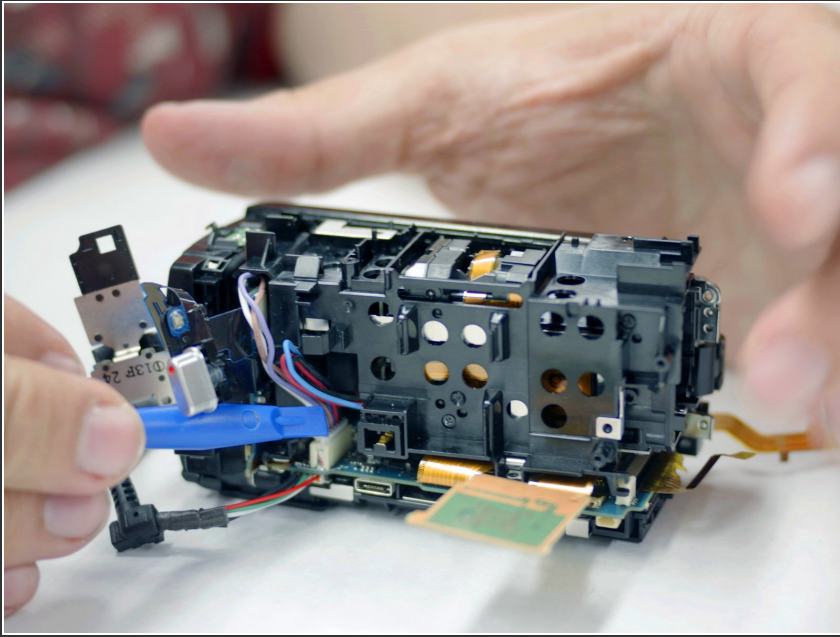
- Orienting the camera such that the right side is facing you, remove the single 5.5 mm Phillips #00 screw from the start button.

Step 22



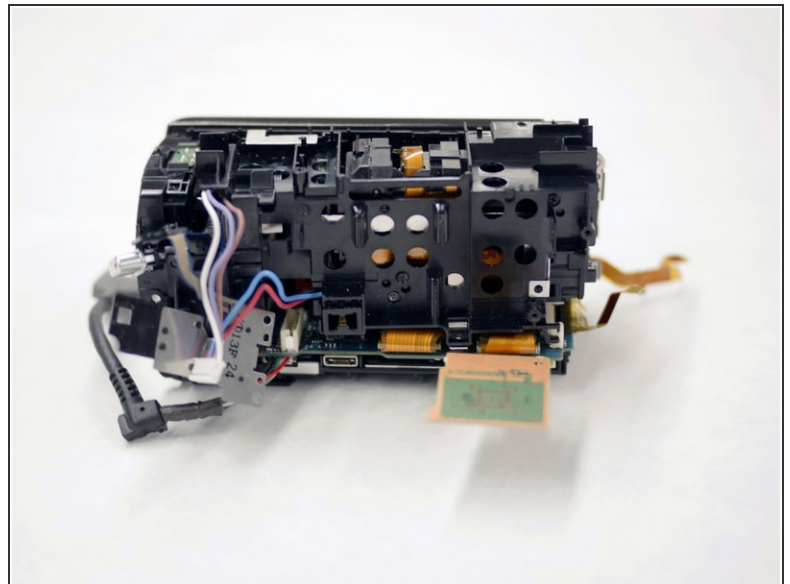
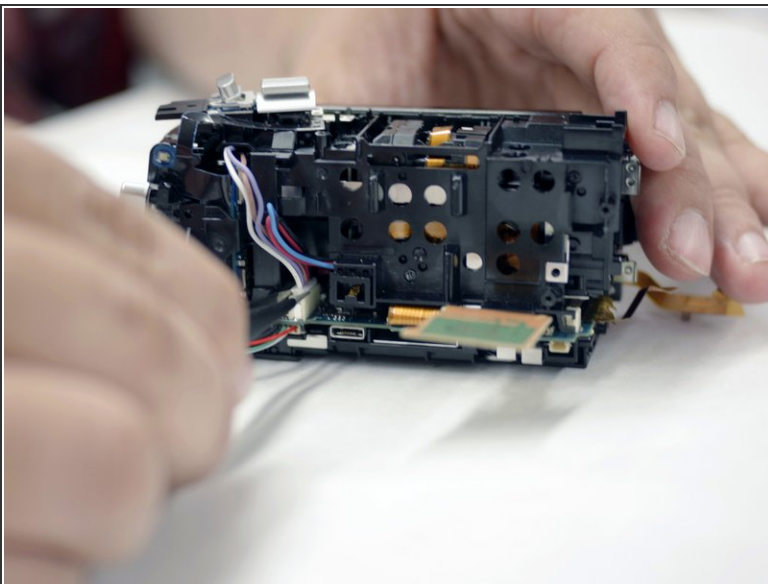
- Use your blue plastic opening tool to disconnect the lens assembly from the hull.

Step 23



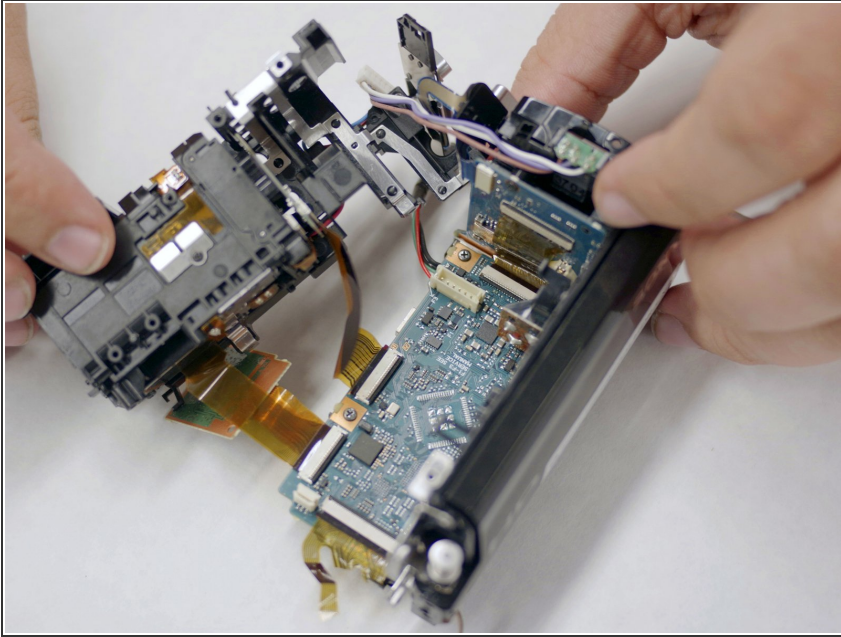
- Use your blue plastic opening tool to move the wires out of the way.

Step 24



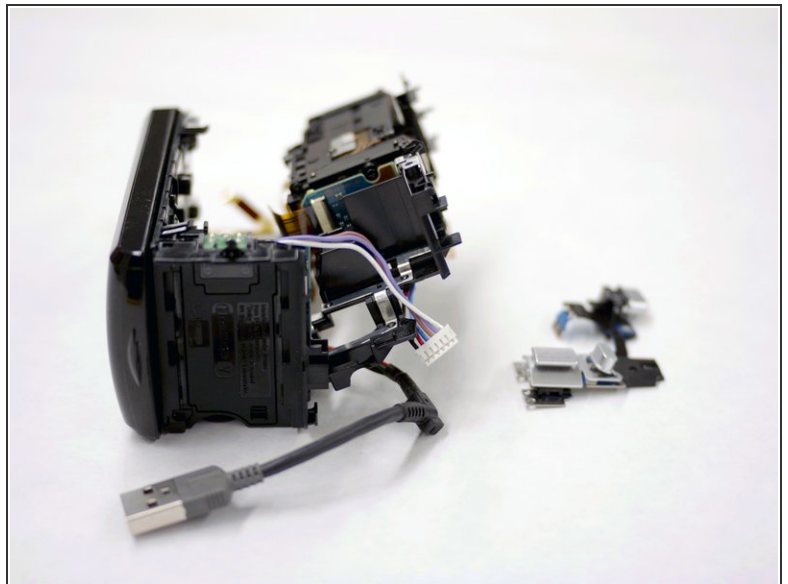
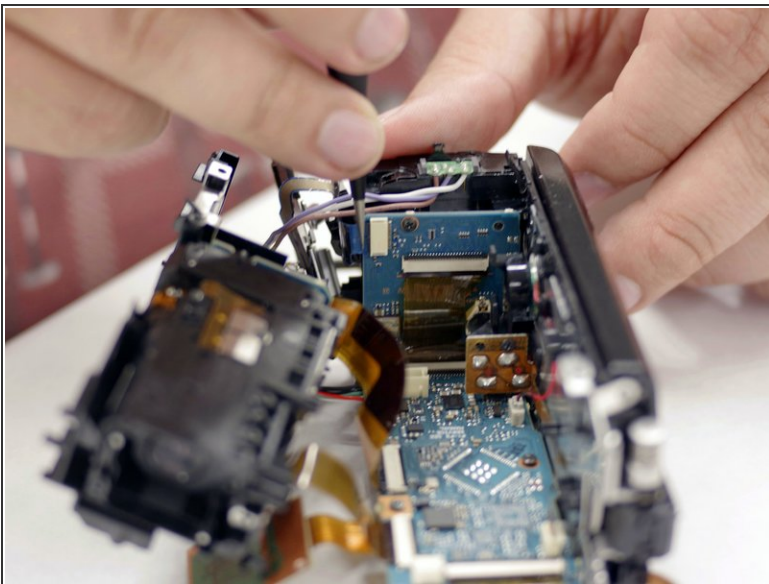
- Orienting the camera such that the right side is facing you, remove the wire harness connecting the lens assembly to the motherboard using your tweezers.

Step 25




- Pull the lens assembly out from inside the camera's hull using your hands.

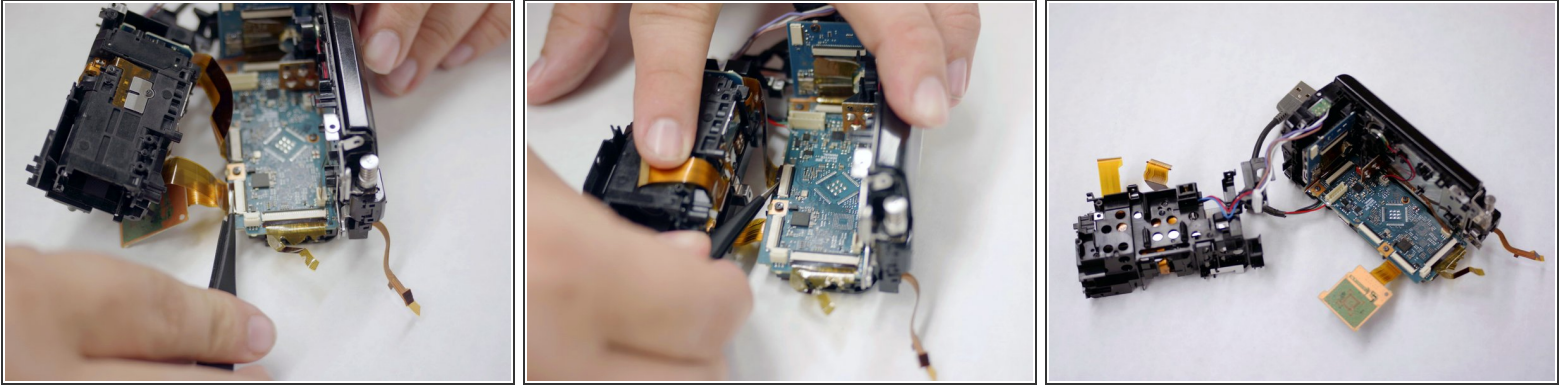
Step 26



- Orienting the camera such that the front side is facing you, remove the ribbon connecting the start and zoom buttons to the powerboard using your tweezers.

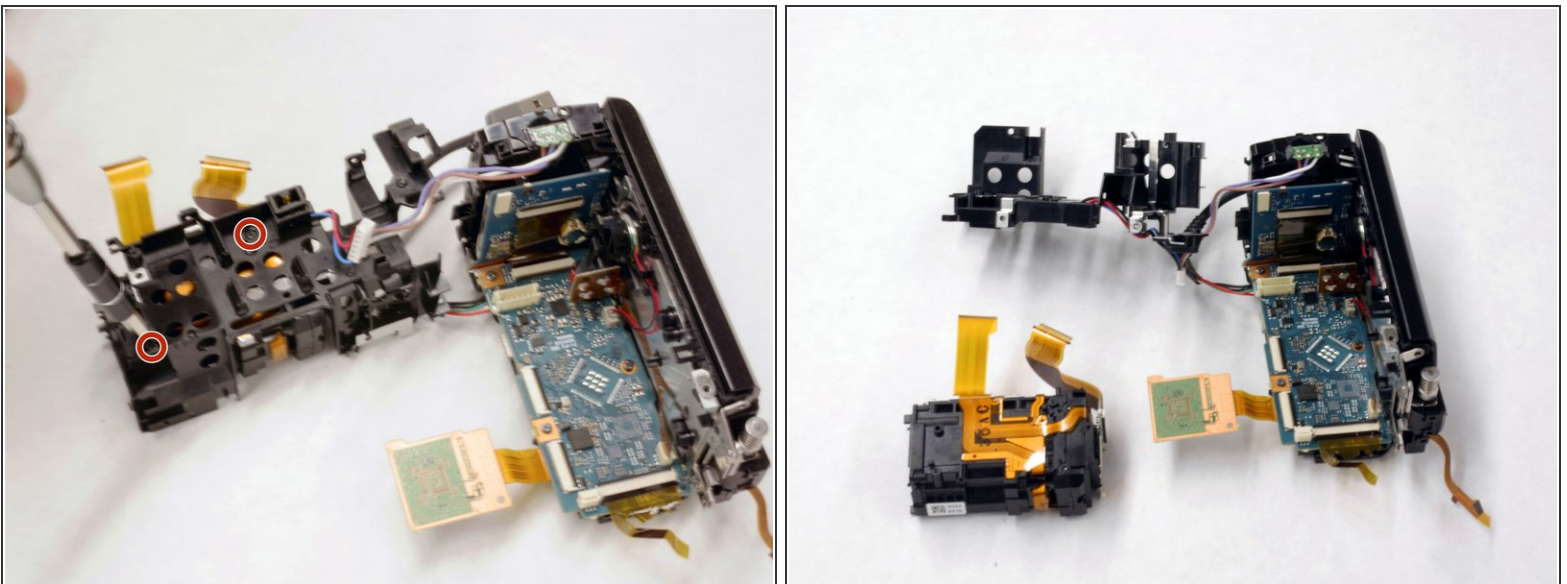
 Ribbon cables are easy to damage. Use the metal tweezers to minimize the risk of damaging these cables, as repairing them requires soldering and can be time consuming.

Step 27



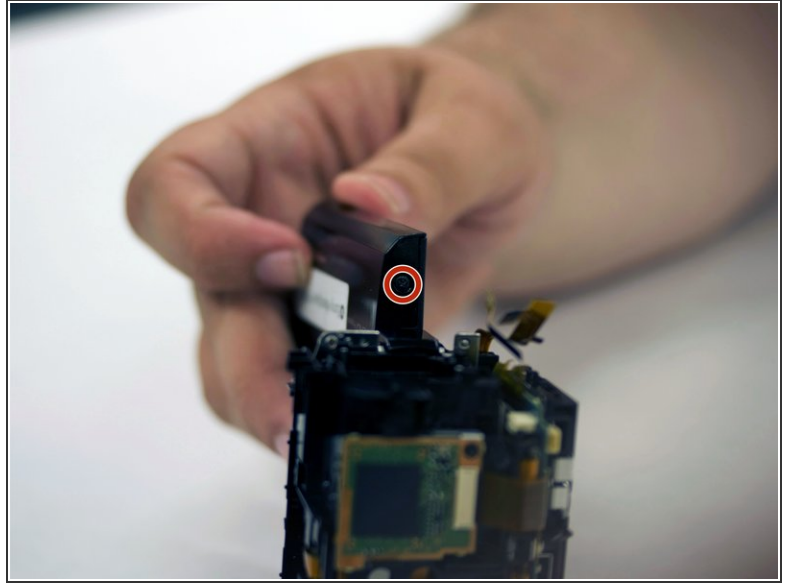
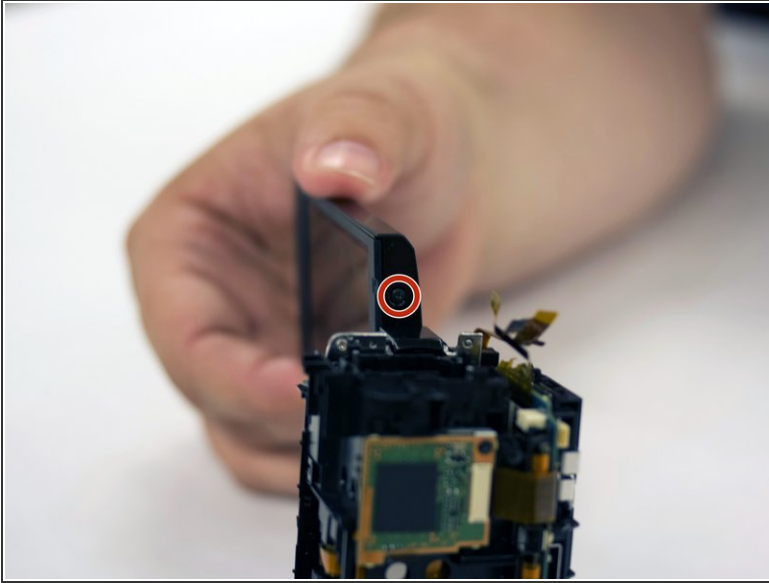
- Using your tweezers, remove the two ribbon cables connecting the lens assembly to the motherboard.
- ⚠ Use metal tweezers to avoid damaging the ribbons.
- The lens assembly casing should now be free. Remove it from the hull of the camera.

Step 28



- Remove the two 4.5 mm Phillips #000 screws connecting the lens assembly to its casing.
- The lens assembly is now completely free. Remove it from its casing.

Step 29 — LCD Screen



- Rotate the LCD screen on its hinge +/- 90 degrees relative to the camera to expose the screws on the side of the LCD panel.
- Remove the two 5.5 mm Phillips #00 screws.

Step 30



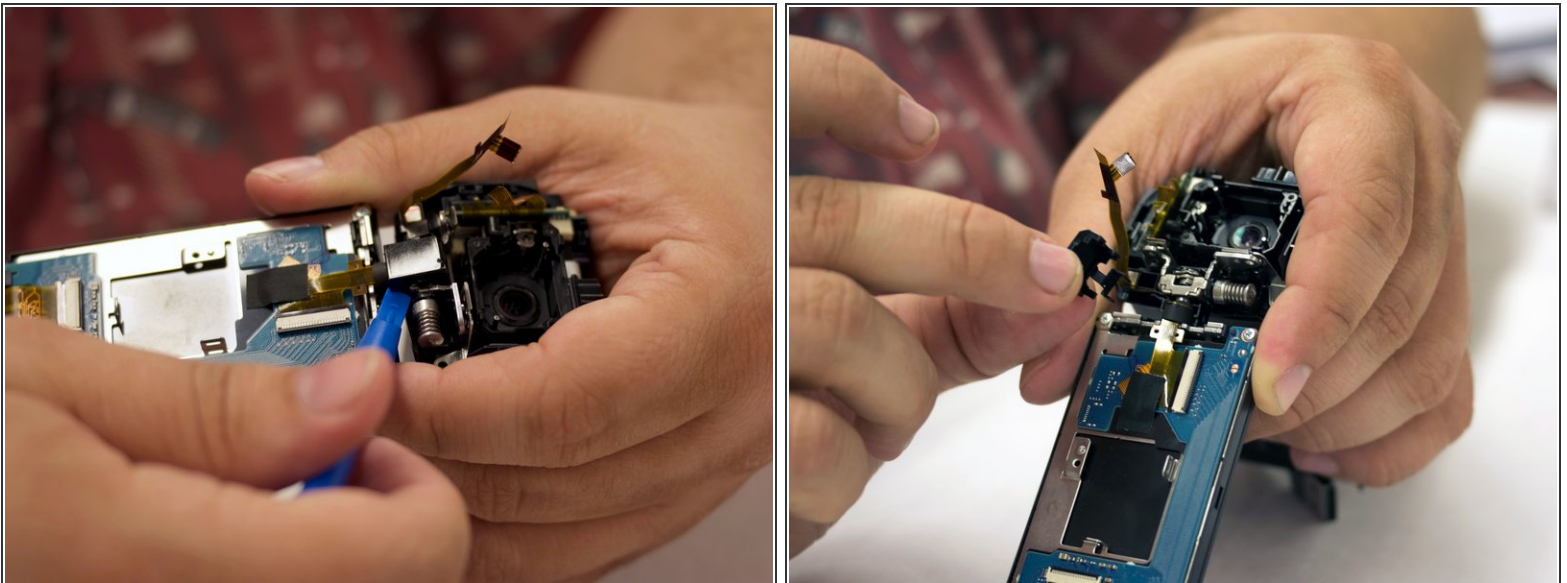
- Remove the single 3 mm Phillips #00 screw from inside of the hinge of the LCD panel.

Step 31



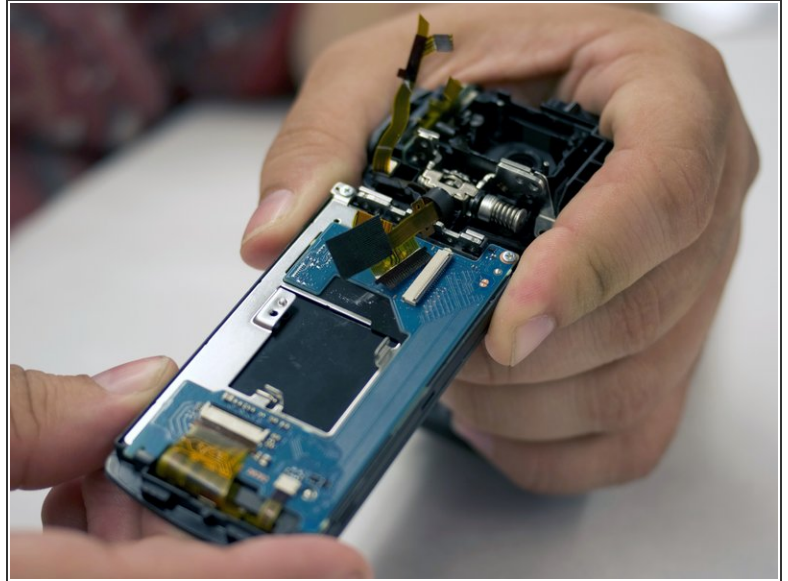
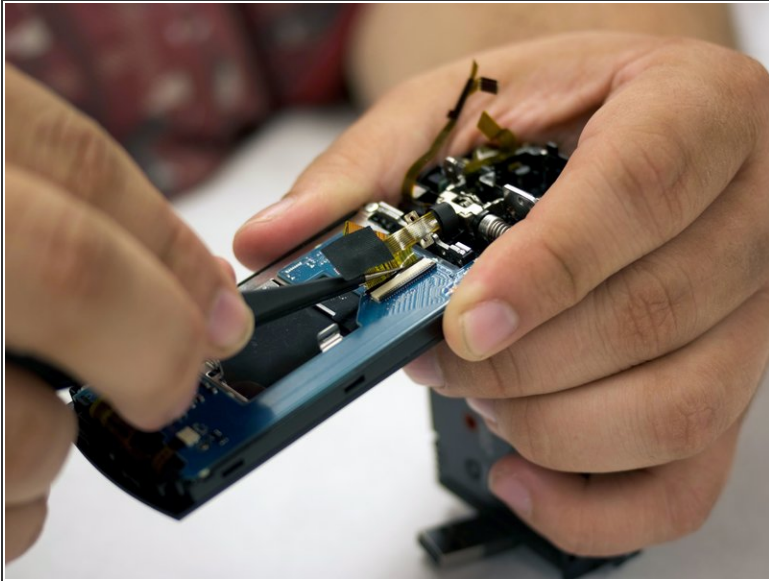
- Using the plastic opening tools , remove the back panel from the LCD screen.

Step 32



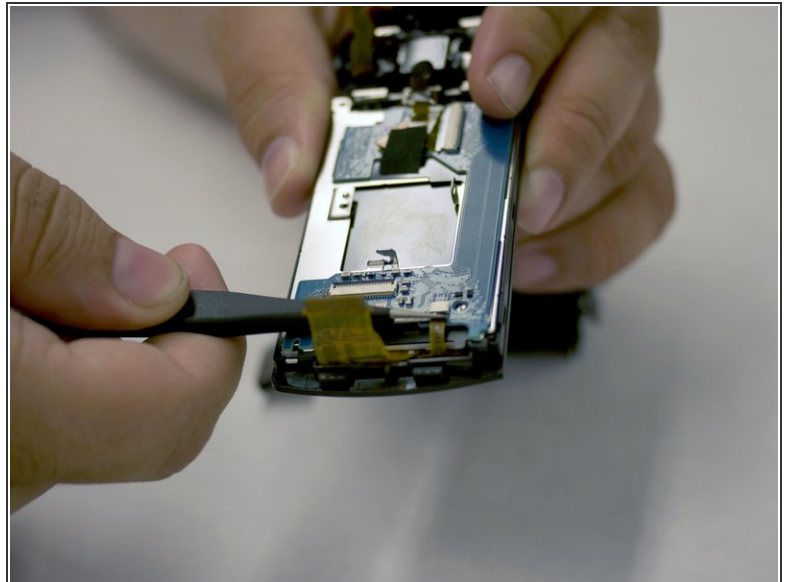
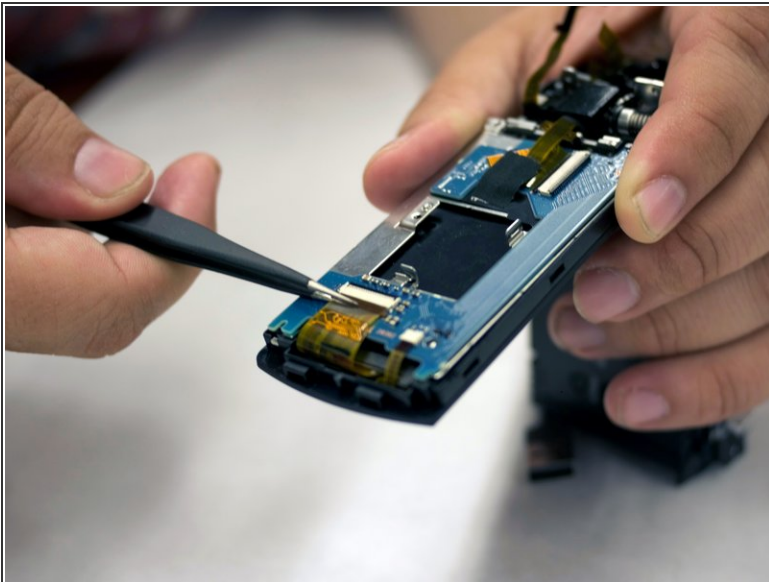
- Remove the hinge enclosure from the back of the LCD screen using the blue plastic opening tools.

Step 33



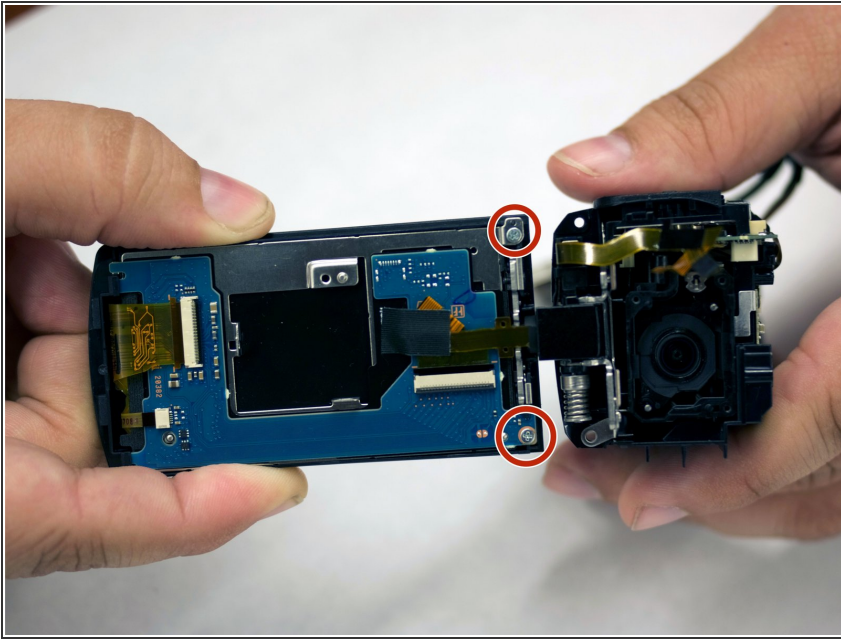
- With tweezers, remove the ribbon cable that is connecting the LCD screen board to the motherboard.

Step 34



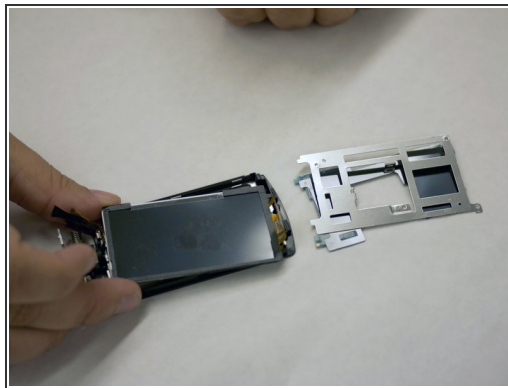
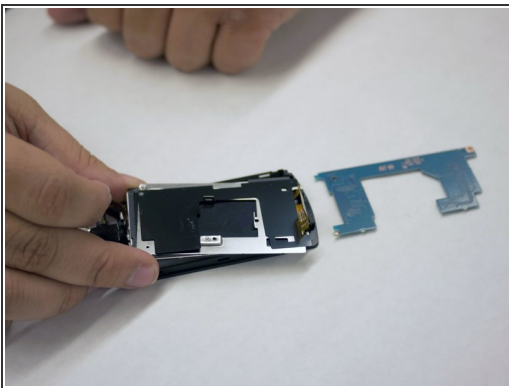
- Using metal tweezers, remove the two ribbons connecting the LCD board to the screen.

Step 35



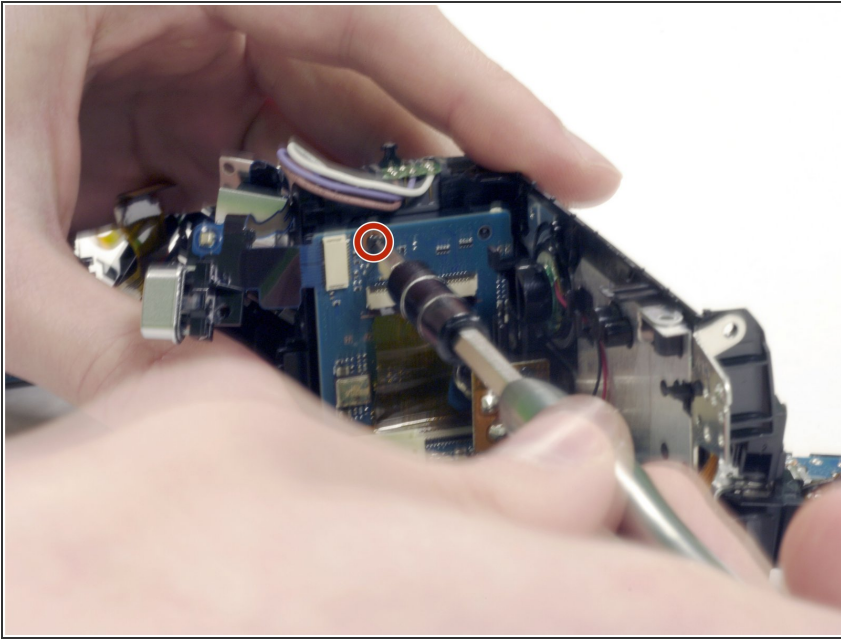
- Remove the two silver-colored 4.5 mm Phillips #00 screws from LCD board.

Step 36



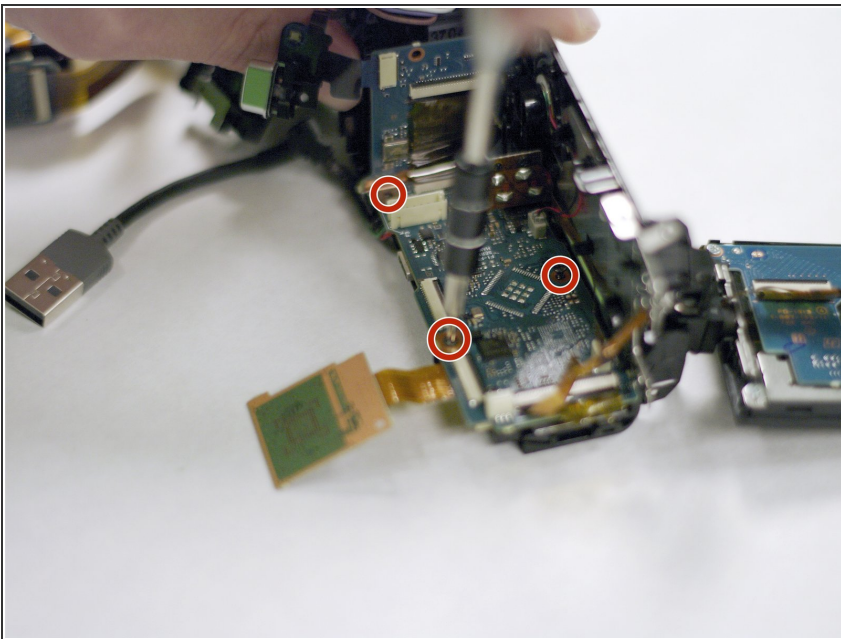
- The LCD screen and all of its components are free. Unravel them and replace parts as needed (main board, screen, metal fixture, etc.)

Step 37 — Motherboard



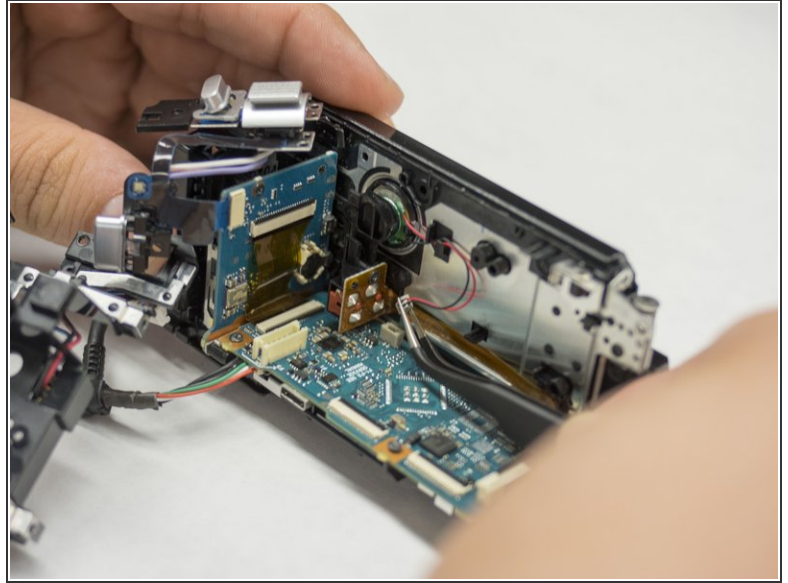
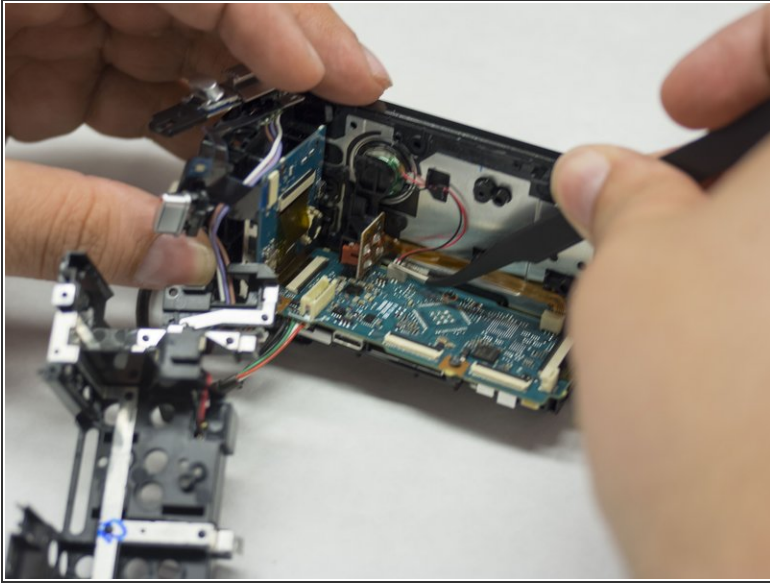
- Orient the camera such that the front is facing you.
- Remove the single 5.5 mm Phillips #00 screw attaching the powerboard to the motherboard.

Step 38



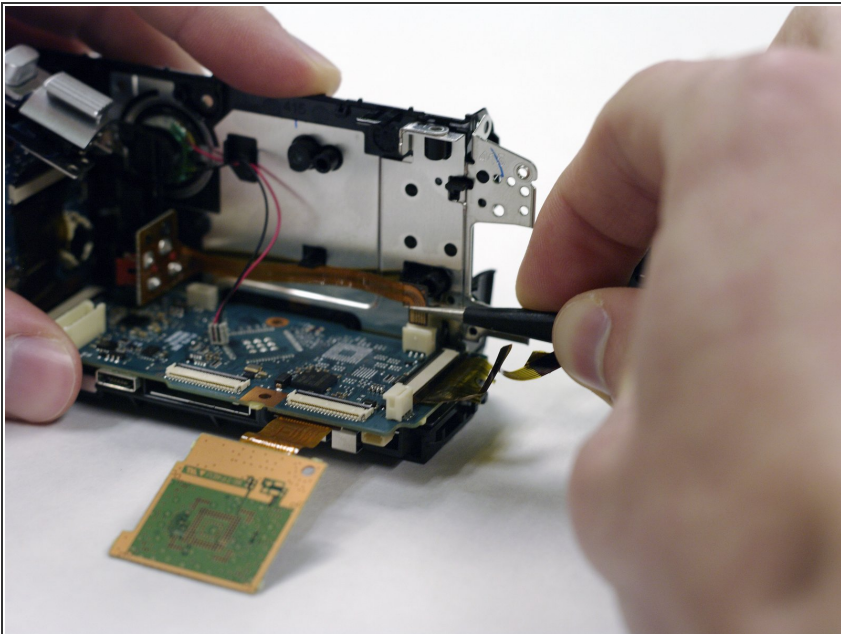
- Remove the three 5.5 mm Phillips #00 screws attaching the motherboard to the camera's hull.

Step 39




- Orient the camera such that the right side is facing you.
- With your tweezers in your right hand, gently remove the wire connecting the speaker to the motherboard.

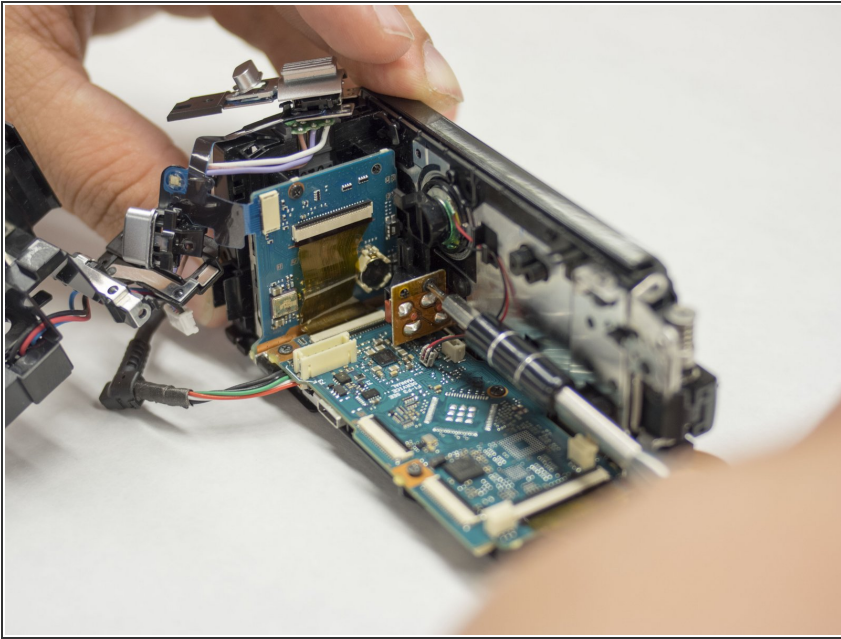
Step 40



- With your tweezers in your right hand, gently pull upward to disconnect the ribbon that runs from the motherboard to the microphone jack.

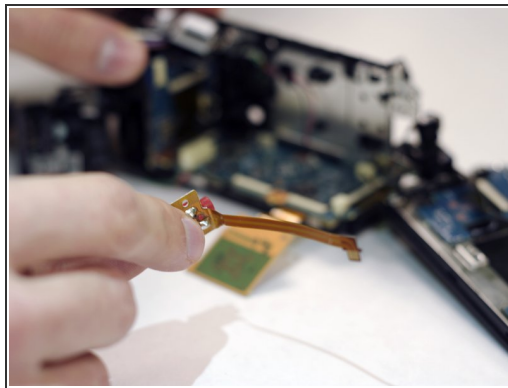
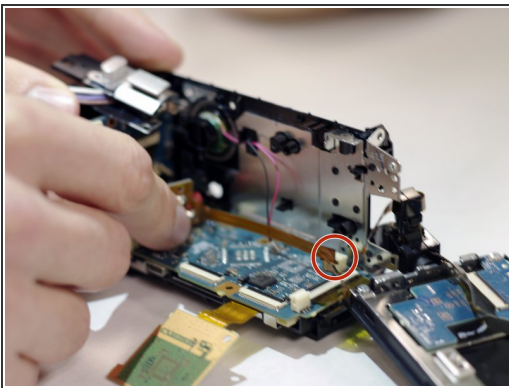
 To avoid damaging sensitive electronic equipment, grip only the part of the ribbon which connects directly to the motherboard.

Step 41



- Remove the 5.5 mm Phillips #00 screw above the microphone jack.

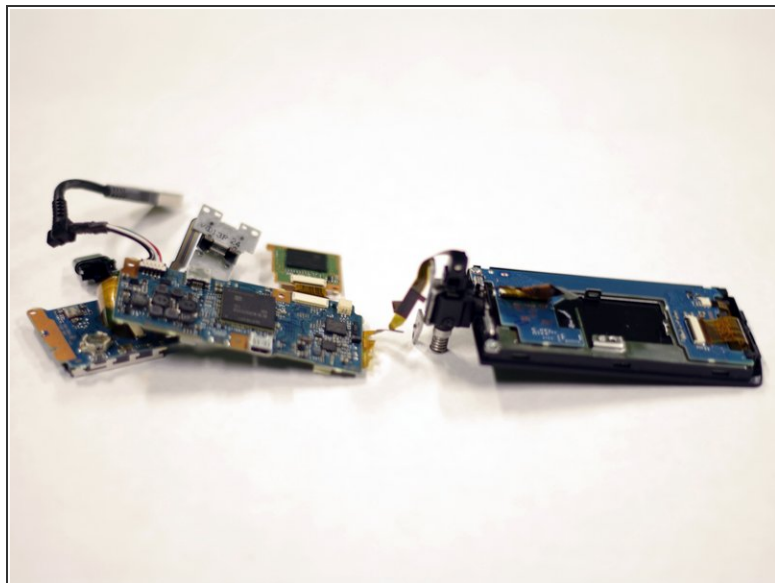
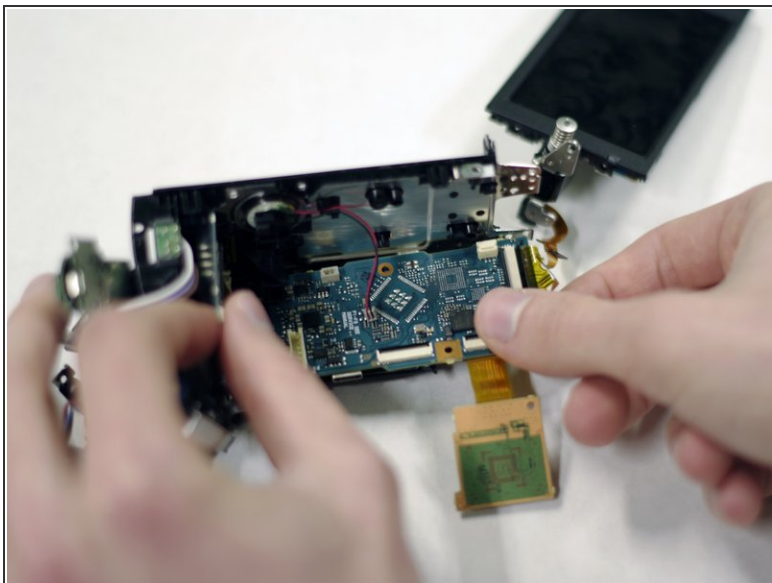
Step 42



- Using your left hand to hold the camera, remove the microphone jack with your right thumb and index finger.

⚠ Try not to touch the ribbon, as doing so may damage sensitive electronic circuits.

Step 43



- Using your left hand to hold the camera, remove the motherboard from the camera's hull using your right thumb and index finger.

To reassemble your device, follow these instructions in reverse order.