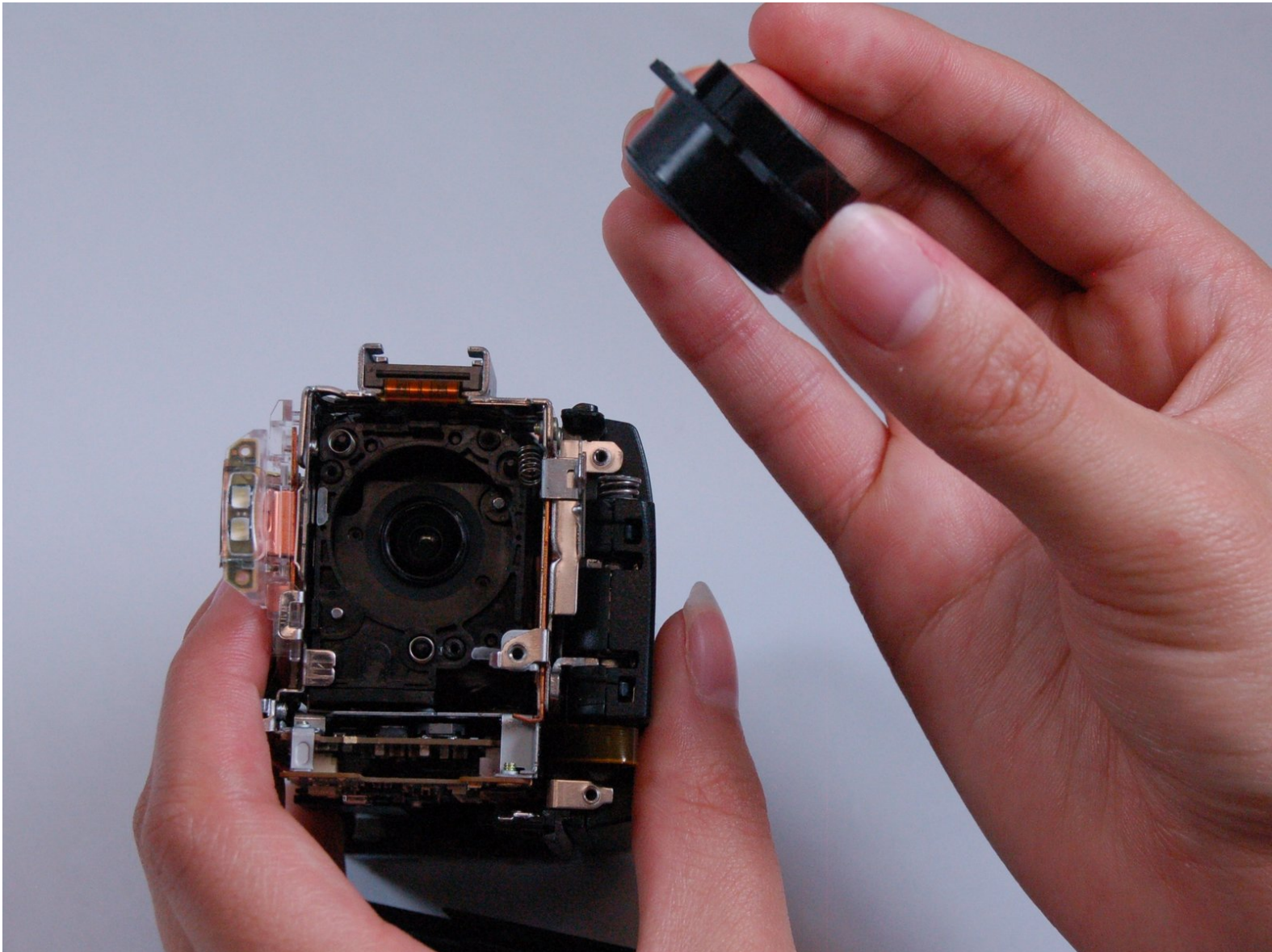




# Sony Handycam HDR-CX580V Lens Replacement

This guide will help you to remove the lens in your Sony Handycam HDR-CX580V.

Written By: Derek Fritz



# INTRODUCTION

In this guide you will work through the process of removing the lens from the camera. This involves removing many moving parts of the camera, as well as some wiring and large amount of casing. This will, however, allow you to clean the lens more directly.



## TOOLS:

- [Phillips #00 Screwdriver](#) (1)
  - [iFixit Opening Tools](#) (1)
  - [Tweezers](#) (1)
-

## Step 1 — Battery



- Locate the slider labeled "BATT" and pull it back from the battery with your thumb.

## Step 2



- At this point, you should be able to remove the battery by simply lifting it from the camera.
- ⓘ The camera provided for guide-creation did not include a battery. However, the battery position should be the same.

### Step 3 — Recording Button



- Use the Phillips #00 head to remove the following 5.5mm screws on the left-hand side.

### Step 4



- Use the Phillips #00 head to remove the following 5.5mm screws on the empty battery socket.

## Step 5



- Use the Phillips #00 head to remove the following 5.5mm screws on the bottom.

## Step 6



- Fold back the hinging panel on the top of the camera located near the lens.
- Use the Phillips #00 head to remove the following 5.5mm screws on the top under the hinging panel.

## Step 7



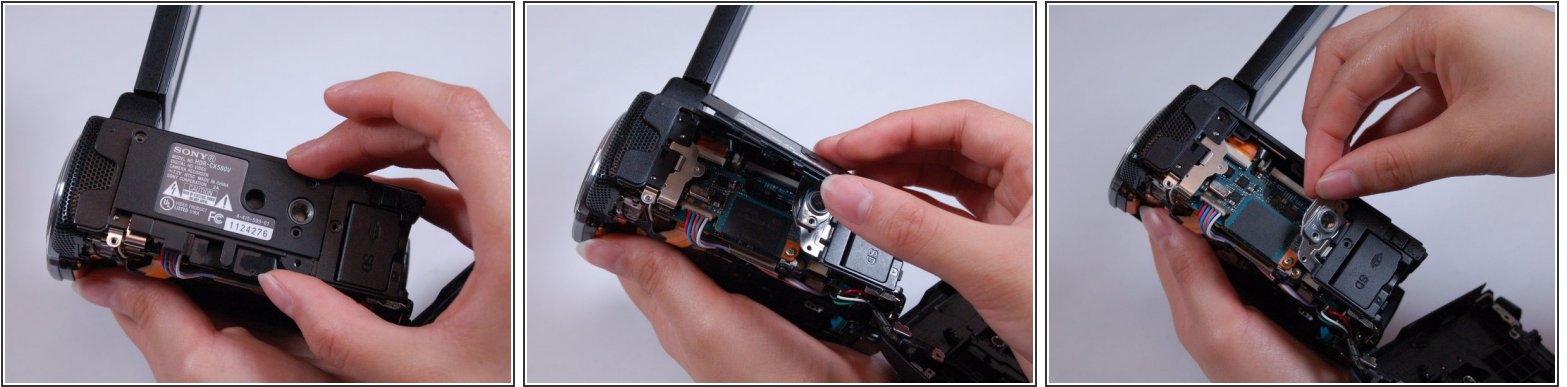
- Slide back the cover for the DC and A/V ports on the right-hand side.
- Use the Phillips #00 head to remove the following 5.5mm screws underneath the cover and on the right-hand side.

## Step 8



- Use the plastic opener tool to loosen the casing on the bottom and the right-hand side.
- ⓘ At this point, the right-hand side should simply come off, although it will still be connected with internal wiring.
- ⚠ Be delicate with the wiring still attached to the side casing until you have access to removing them later.

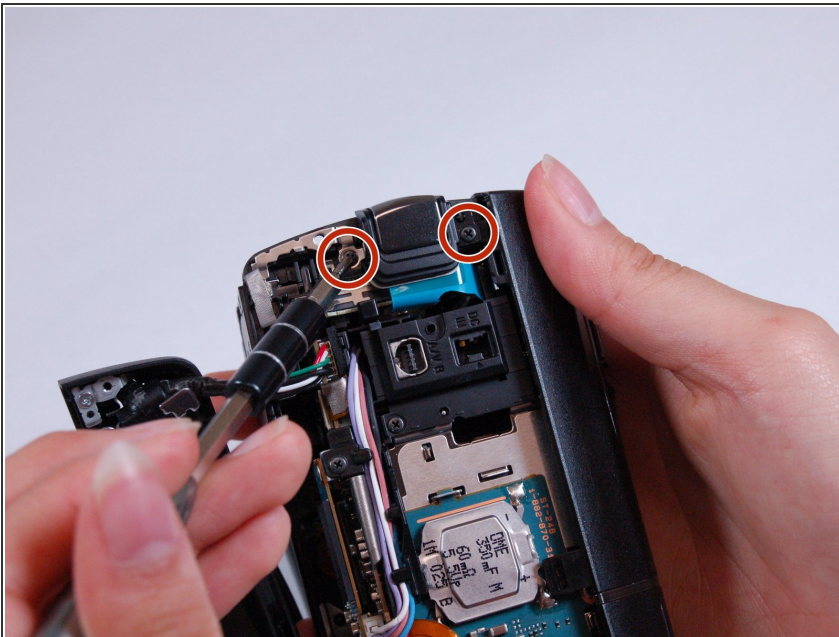
## Step 9



- Carefully remove the bottom casing with your fingers.

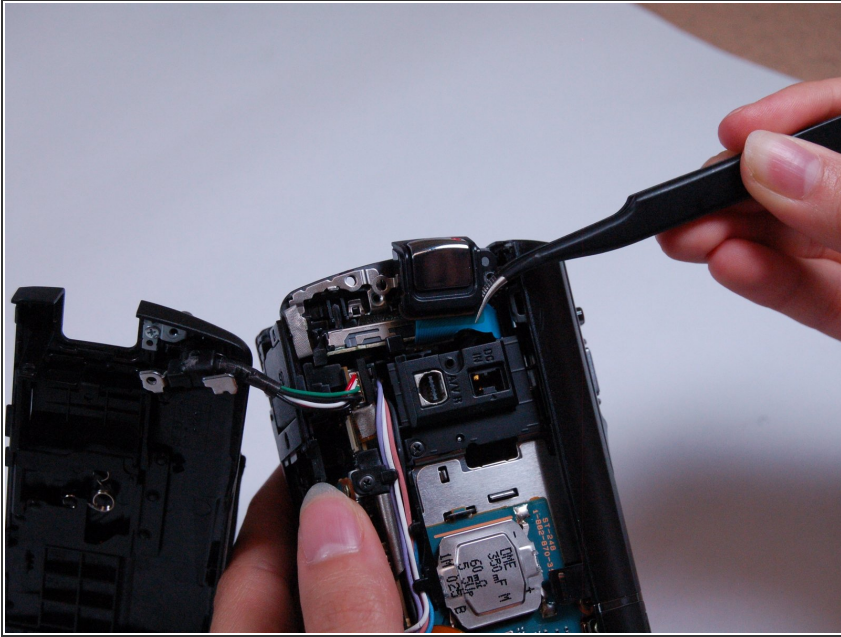
⚠ Be careful not to loose the small metal stand-mount pieces that lay underneath the casing.

## Step 10



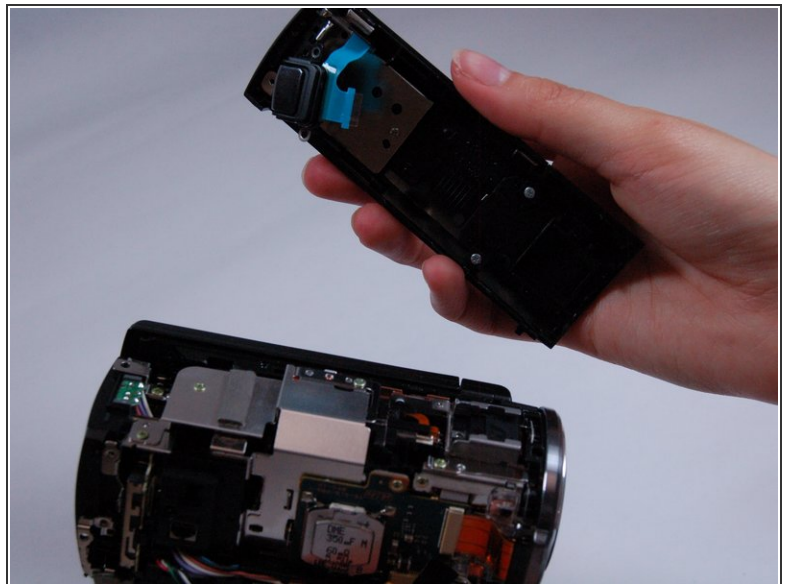
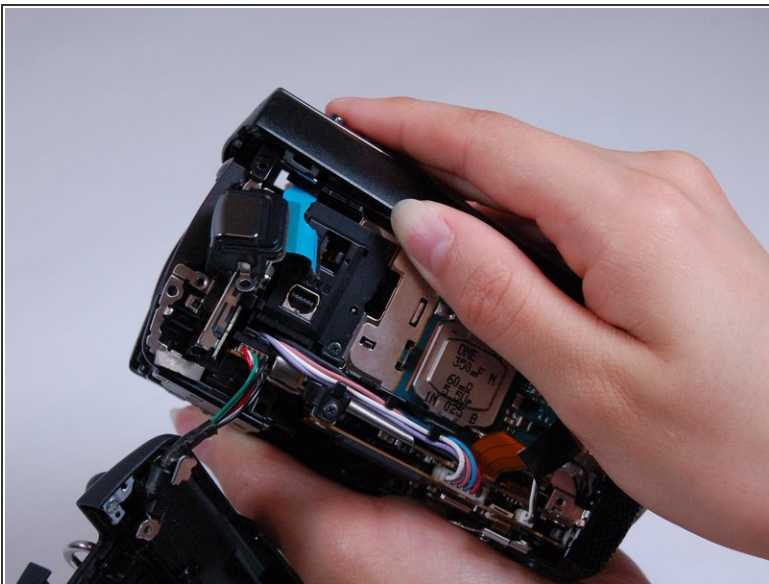
- Look at the right side of the camera (the side with the recording button) while holding back the detached casing.
- Use the Phillips #00 head to remove the following 5.5mm screws near the recording button.

## Step 11



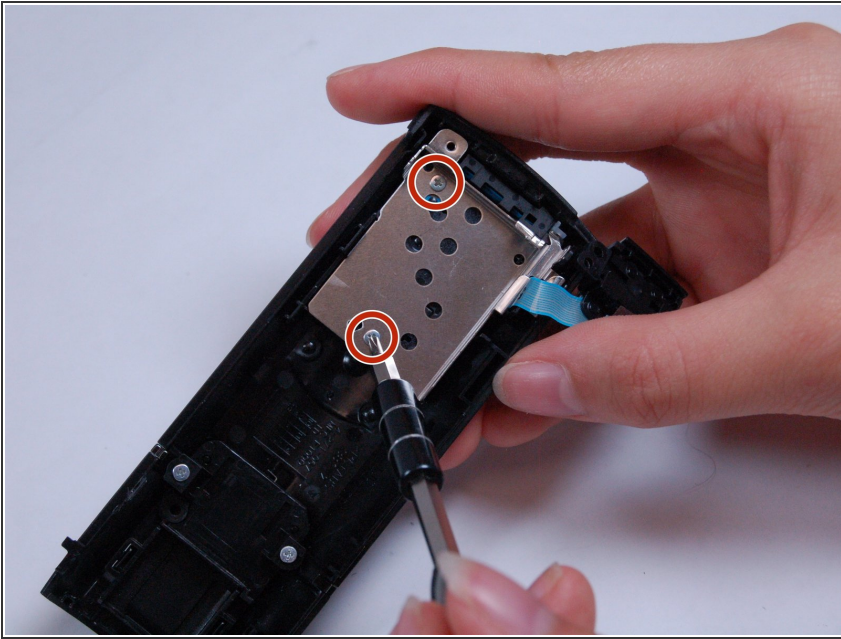
- Use the curved tweezers to carefully detach the blue ribbon cable connector from the body of the camera.
- ⓘ The recording button and its blue ribbon cable connector should become detached from the body, but remain connected to the top casing.

## Step 12



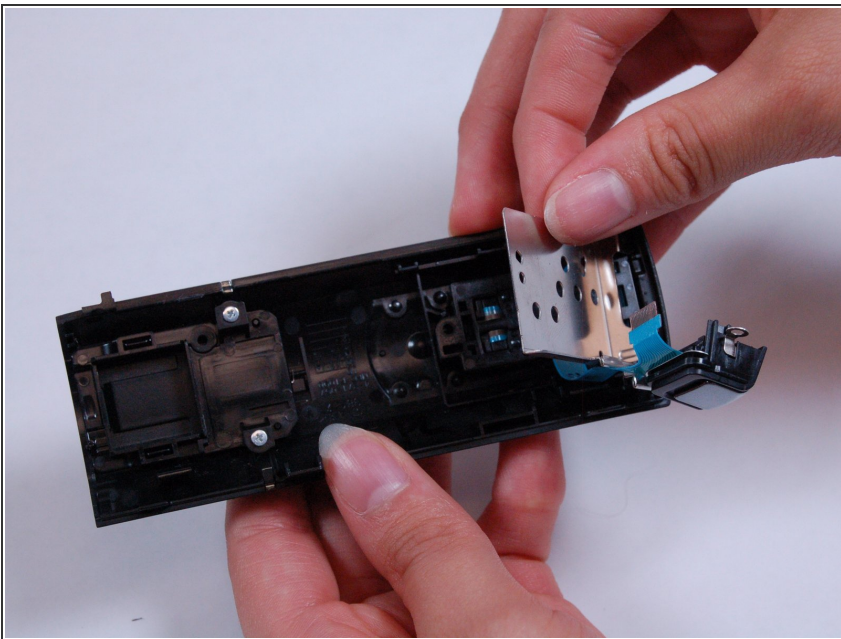
- Pull off the top casing by lightly grabbing either side and pulling towards the back of the camera.

## Step 13



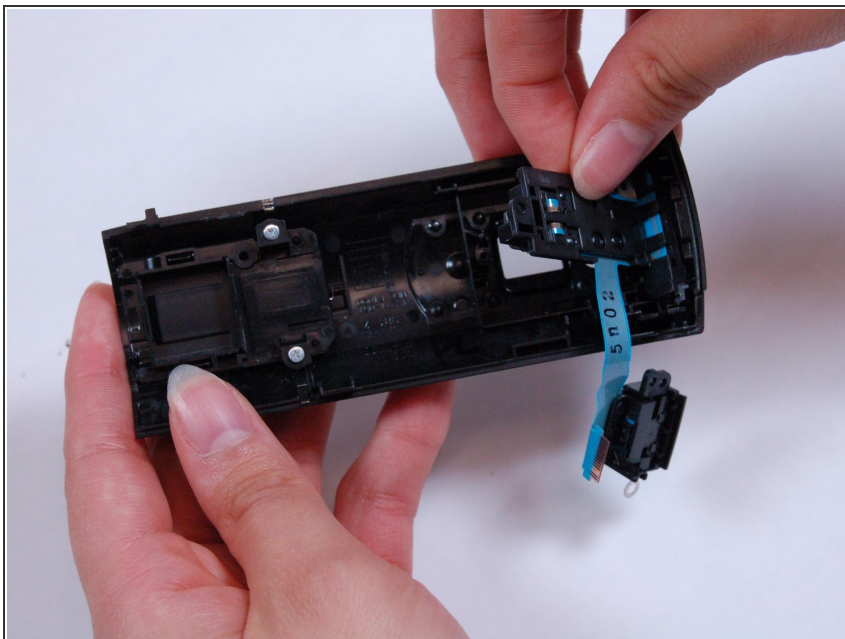
- Use the Phillips #00 head to remove the following 5.5mm screws on the inside of the top casing.

## Step 14



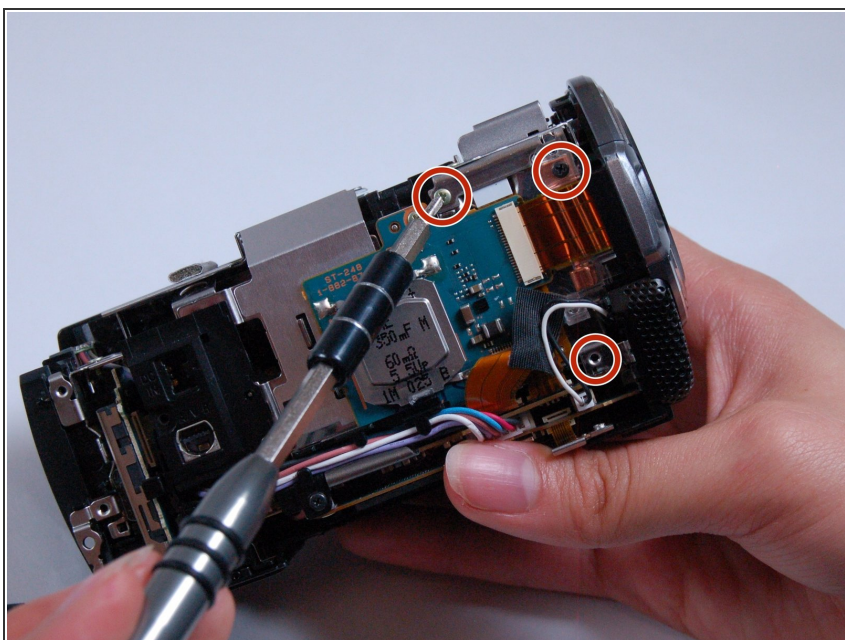
- Carefully remove the metal frame from the top casing.

## Step 15



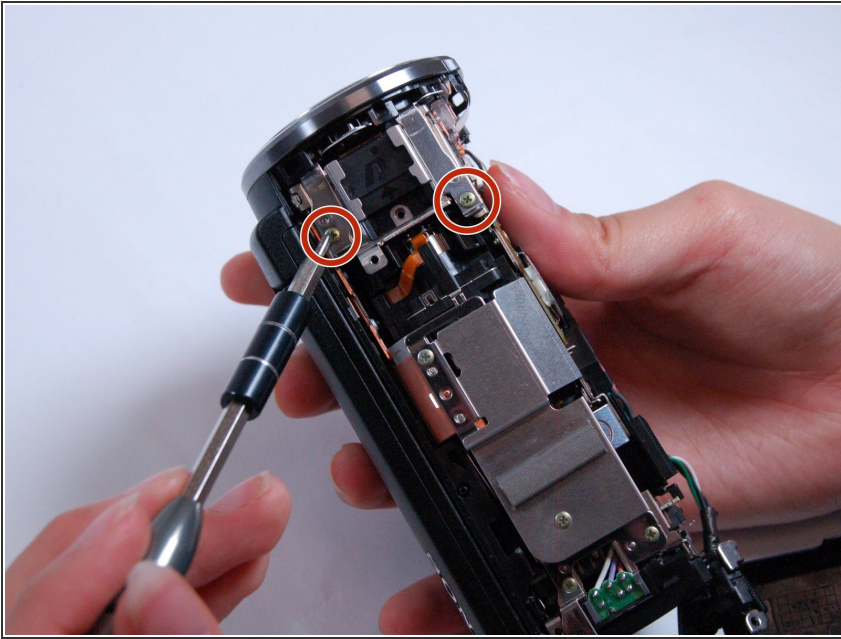
- You are now free to remove the recording button, as well as its connection strip.

## Step 16 — Lens



- Use the Phillips #00 head to remove the following 5.5mm screws on the right-hand side near the lens.

## Step 17



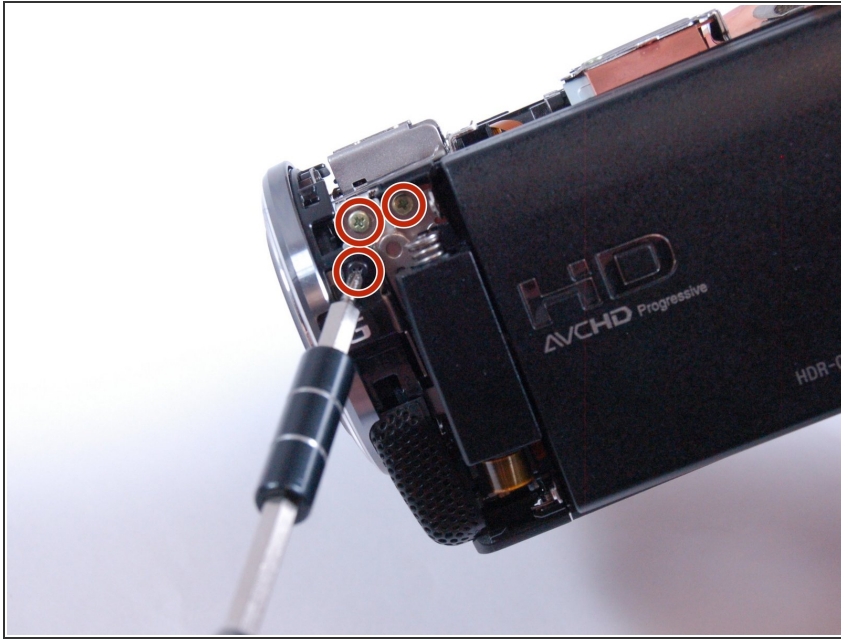
- Use the Phillips #00 head to remove the following 5.5mm screws on the top near the lens.

## Step 18



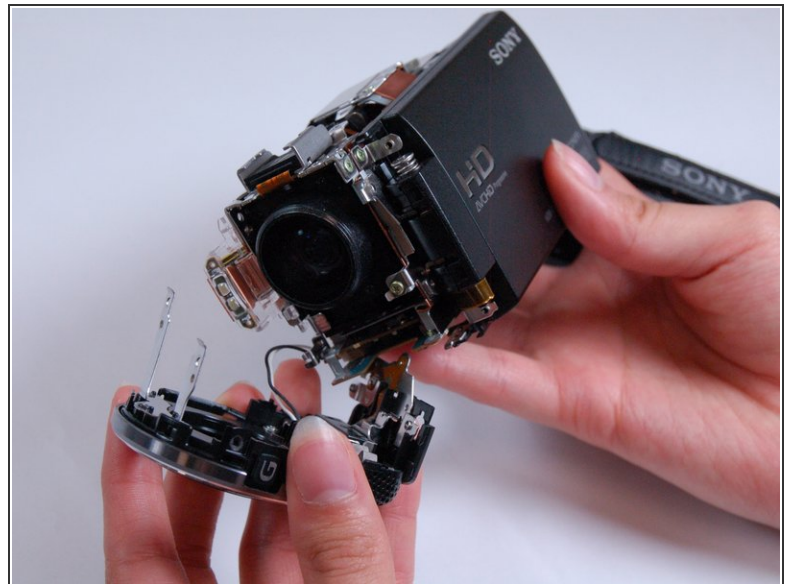
- Carefully pop off the casing strip on the camera's left-hand side near the lens.

## Step 19



- Use the Phillips #00 head to remove the following 5.5mm screws underneath the casing strip.

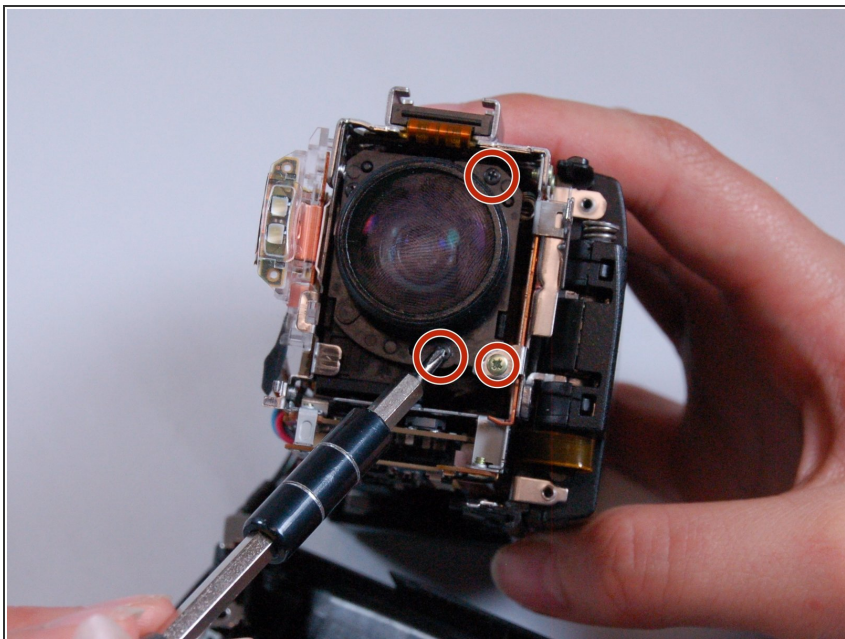
## Step 20



- Carefully pull the lens cover and shutter assembly off of the front of the camera.

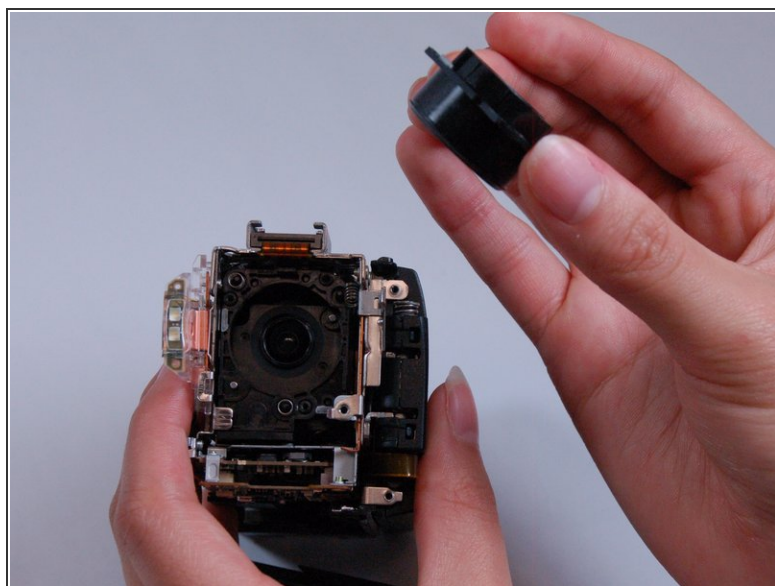
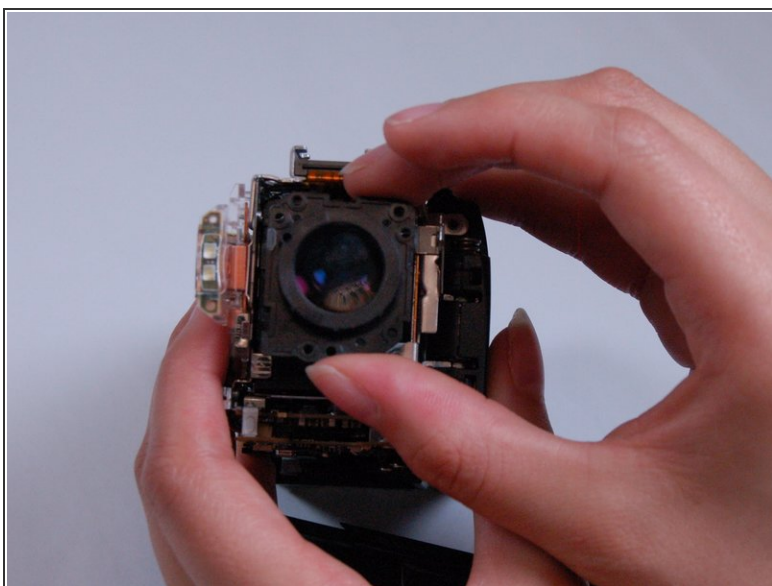
⚠ Do not pull the the wires out too strongly. Be sure to remove them from their base where they attach to the camera's body.

## Step 21



- Use the Phillips #00 head to remove the following 5.5mm screws on the lens shell.

## Step 22



- Carefully remove the lens from the body of the camera.

⚠ Make sure to avoid touching the lens itself directly in order to prevent scratches or dirtying.

To reassemble your device, follow these instructions in reverse order.