



Sony Handycam HDR-CX675 Camera Shell Replacement

This guide is to help remove the camera shell to get inside for other replacements.

Written By: Mohamed Nazer



INTRODUCTION

The camera shell is the first thing that one needs to remove in order to expose the camera. It is important that one follows the steps below to remove the camera shell without breaking any part as it has light and sensitive plastic parts.



TOOLS:

- [iFixit Opening Tools](#) (1)
 - [JIS Driver Set](#) (1)
-

Step 1 — Camera Shell



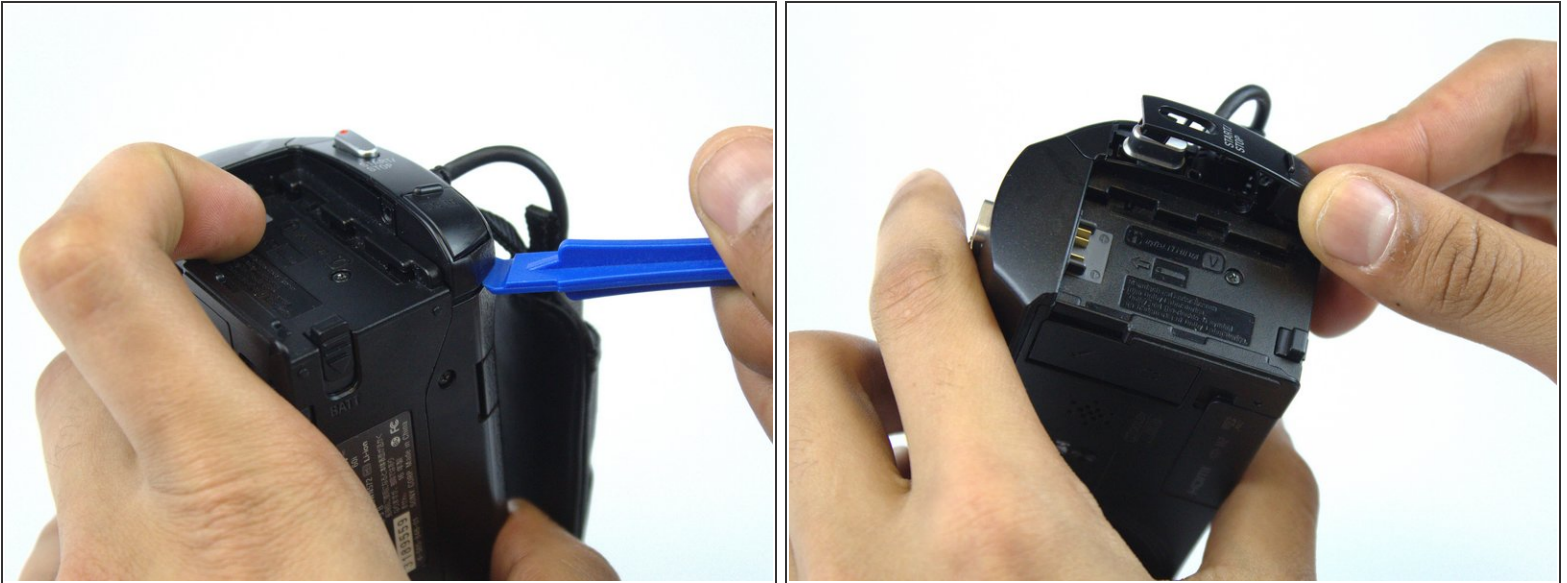
- The battery should be removed and oriented upwards.

Step 2



- Remove the side 4.5 mm JIS #00 screw using JIS Screwdriver
- Remove the 5.5 mm JIS #00 screw.

Step 3



- Gently pry the plastic case surrounding the start/stop button free by using the blue plastic opening tools.
- Remove the casing using your thumb and index finger.

Step 4



- Turn the camera around and flip open the LCD screen to expose the side panel.
- Remove the 5.5mm #00 screw using the J00 head screwdriver.

Step 5



- Turn the camera to the handgrip side and unscrew two of the 5.5mm JIS #00 head screws using the JIS #00 head screwdriver.

Step 6



- Remove the two 5.5mm JIS #00 screws with the bottom of the camera facing up.

Step 7



- Turn the camera around in a way that the bottom of the camera is facing you.
- Use the blue opening tool to gently remove the camera shell off of the camera.

To reassemble your device, follow these instructions in reverse order.