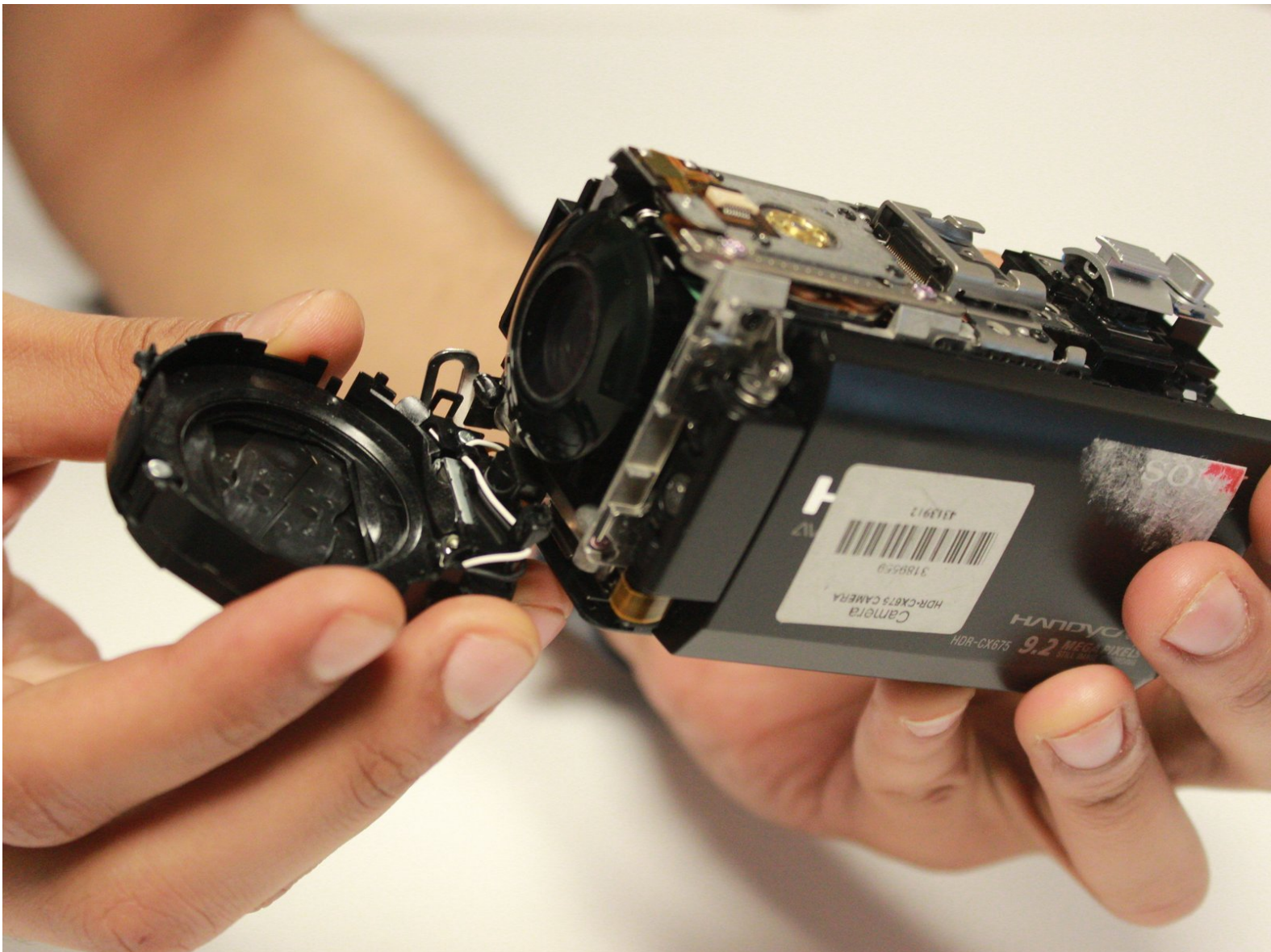




Sony Handycam HDR-CX675 Shutter Assembly Replacement

In this guide, you will learn how to remove the shutter assembly from the Sony Handycam HDR-CX675.

Written By: Mohamed Nazer



INTRODUCTION

In this guide, you will learn how to remove the shutter assembly from the Sony Handycam HDR-CX675. Completely removing the shutter assembly must be done with caution, as it is connected to the motherboard with sensitive electrical ribbon.

TOOLS:

- [iFixit Opening Tools](#) (1)
 - [JIS Driver Set](#) (1)
 - [Tweezers](#) (1)
-

Step 1 — Camera Shell



- The battery should be removed and oriented upwards.

Step 2



- Remove the side 4.5 mm JIS #00 screw using JIS Screwdriver
- Remove the 5.5 mm JIS #00 screw.

Step 3



- Gently pry the plastic case surrounding the start/stop button free by using the blue plastic opening tools.
- Remove the casing using your thumb and index finger.

Step 4



- Turn the camera around and flip open the LCD screen to expose the side panel.
- Remove the 5.5mm #00 screw using the J00 head screwdriver.

Step 5



- Turn the camera to the handgrip side and unscrew two of the 5.5mm JIS #00 head screws using the JIS #00 head screwdriver.

Step 6



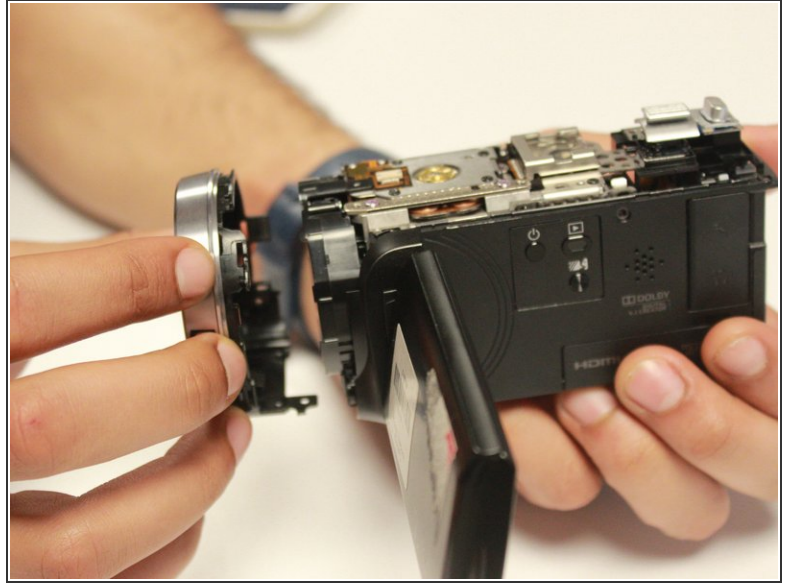
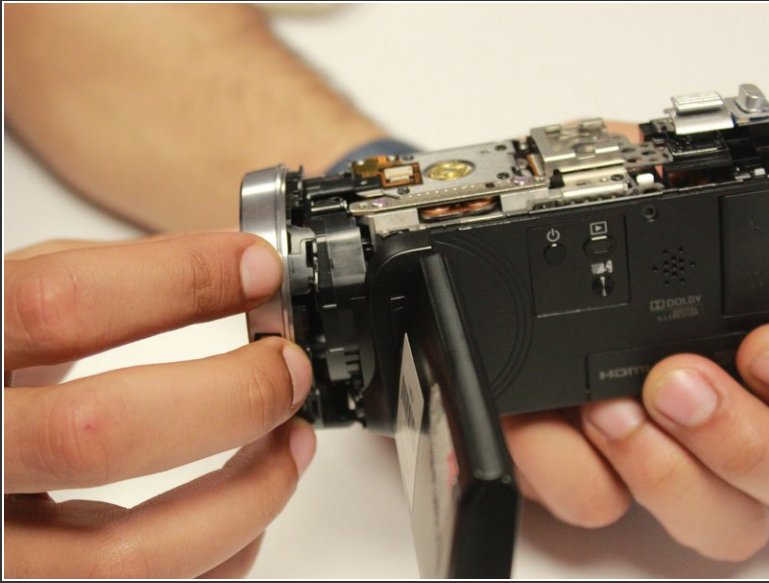
- Remove the two 5.5mm JIS #00 screws with the bottom of the camera facing up.

- Turn the camera around in a way that the bottom of the camera is facing you.
- Use the blue opening tool to gently remove the camera shell off of the camera.

A close-up photograph of a person's hands holding a silver and black Sony Cyber-shot digital camcorder. The camcorder is oriented horizontally. A blue USB cable is plugged into a port on the right side of the device. The back of the camcorder is visible, showing the LCD screen which is partially open and tilted downwards. On the back panel, there are several controls and labels: a power button, a play button, a battery level indicator, a speaker grille, and the text "Exmor R", "Balanced Optical SteadyShot", "HD", "DOLEBY DIGITAL", and "HDMI". The background is a plain, light-colored surface.

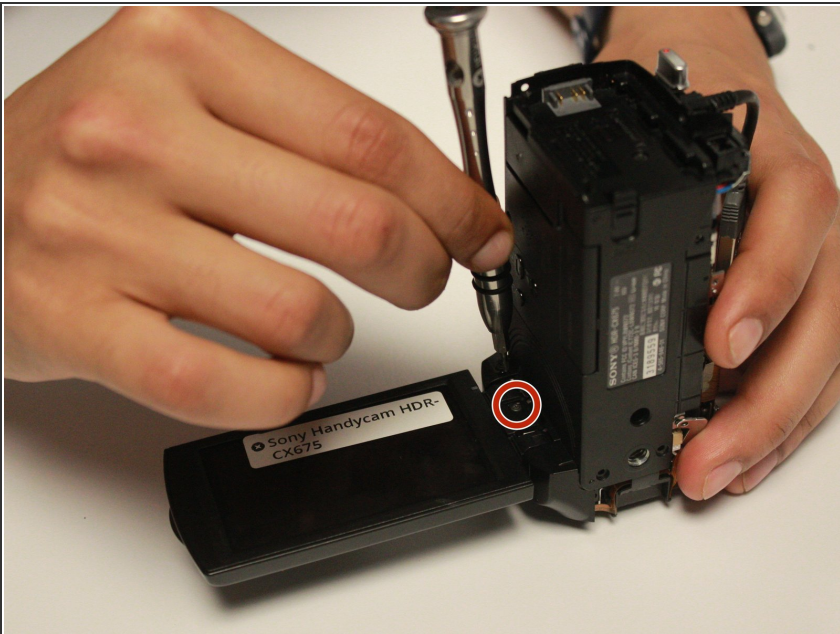
- Using the blue plastic opener smoothly to take the camera shell off.

Step 9



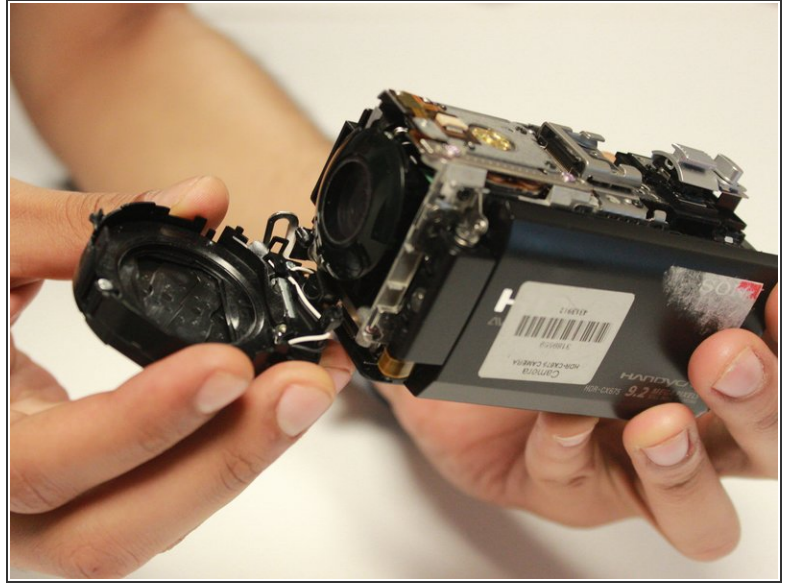
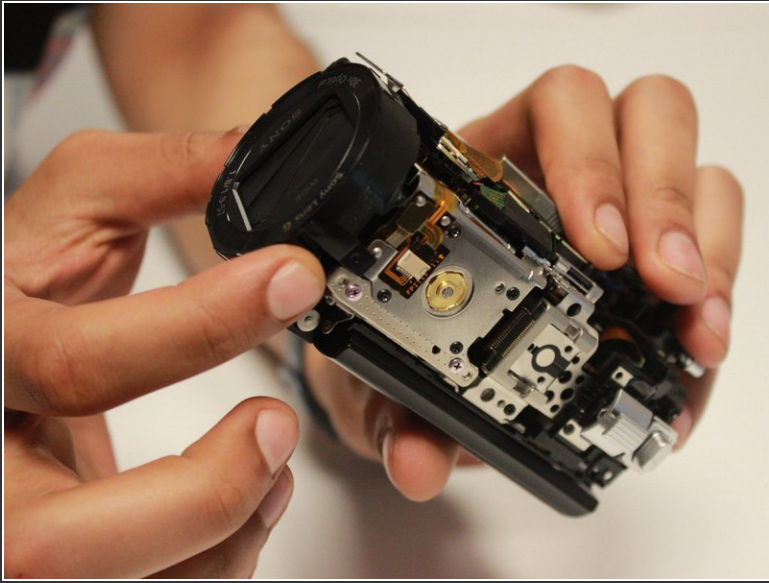
- Let the lens of the camera be pointed to your left.
- Keep holding the camera with your right hand then gently remove the lens cover panel with your left hand.

Step 10 — Shutter Assembly



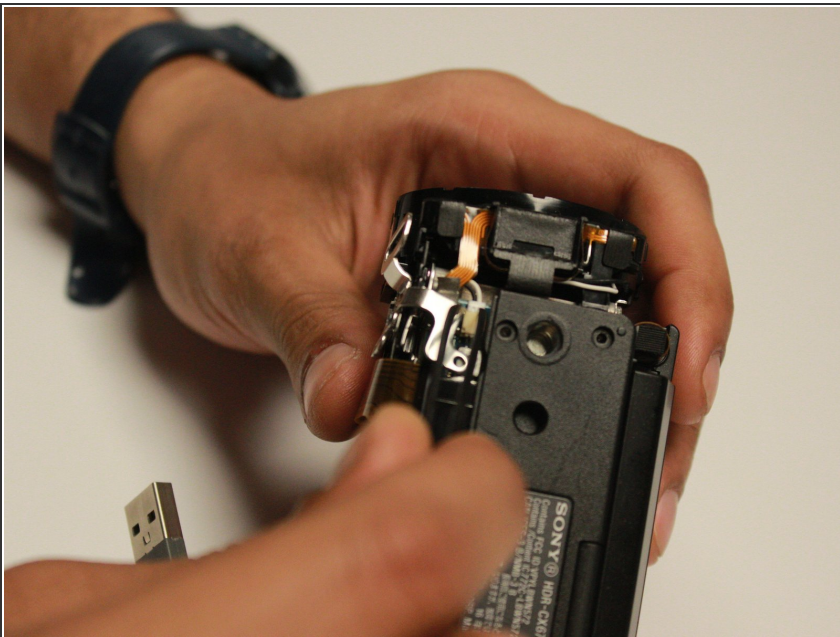
- Place the camera on its lens and keep the LCD screen open and pointed to your right.
- Remove the 5.5mm JIS #00 screws from the hinge of the camera.

Step 11



- Hold the camera with your left hand, and gently remove the shutter assembly part.

Step 12



- Hold the camera that the bottom is upwards and lens pointed to your left hand.
- By the metal tweezers, remove the white wire that is connecting the shutter assembly and motherboard

To reassemble your device, follow these instructions in reverse order.