



# Sony ICF-C1T Screen Replacement

This guide will walk you through replacing the screen of a Sony ICF-C1T and how to solve scratches and/or brightness issues.

Written By: amber woolery



---

## INTRODUCTION

Use this guide to replace the screen of a Sony ICF-C1T. When your screen is too bright or it has a lot of scratches on it, you can easily replace the screen or add a sheet of tint to the backside of it.

---

### TOOLS:

- [Phillips #00 Screwdriver](#) (1)
  - [iFixit Opening Tools](#) (1)
  - [Super Glue](#) (1)
-

## Step 1 — Screen



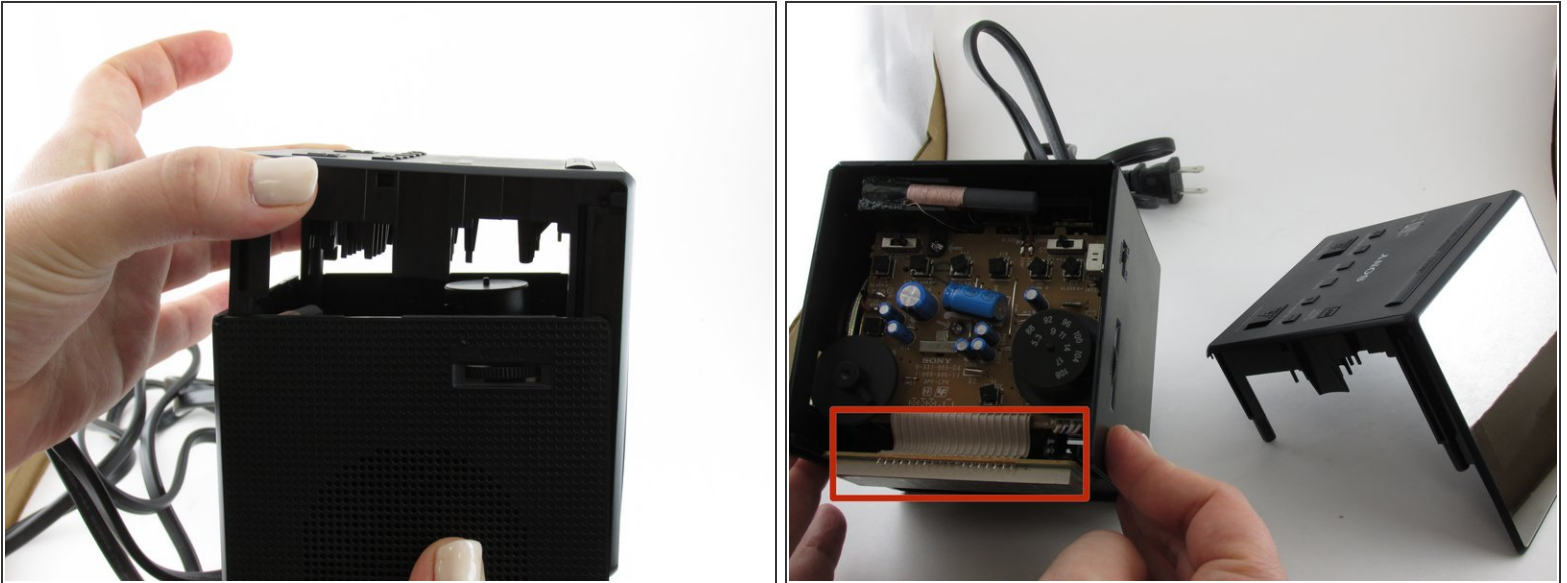
- ⚠ Make sure the clock is unplugged from the wall and the replacement battery has been taken out of the clock to prevent harm to you and to the clock.
- Use a Phillips 00 head screwdriver to remove the four 14 mm screws from the bottom of the clock.


## Step 2



- Insert the plastic opening tool to pry apart the top and sides of the device gently.

## Step 3




 Carefully pull the top of clock off as the clock display is located directly behind the face plate and is still connected by multiple wires.

- Pull the top of the device away from the rest of the clock to expose the inside.

## Step 4



 Do not use too much pressure on the plastic to not break it.

- Add pressure to the inside of the screen so that a small area is loosened enough to be able to use an opening tool.
- Use the plastic opening tool to separate the screen from the device.



## Step 5



- Apply a tinted spray to dim the brightness once the tinted sheet is out of the way.
- ☑ Another way to solve the brightness problem is to apply a tinted color sheet protector.

To reassemble your device, follow these instructions in reverse order.