



Sony ICF-C1T Tuner Dial Replacement

This guide will help you to replace a faulty tuner dial.

Written By: Megan



INTRODUCTION

This guide gives step-by-step instructions on replacing the tuner dial of your device.



TOOLS:

- [iFixit Opening Tools](#) (1)
- [Phillips #00 Screwdriver](#) (1)



PARTS:

- [New tuner dials](#) (1)

Step 1 — Tuner Dial



- Using the Phillips 00 screwdriver, remove 4 (14mm) screws from the underside of the device.

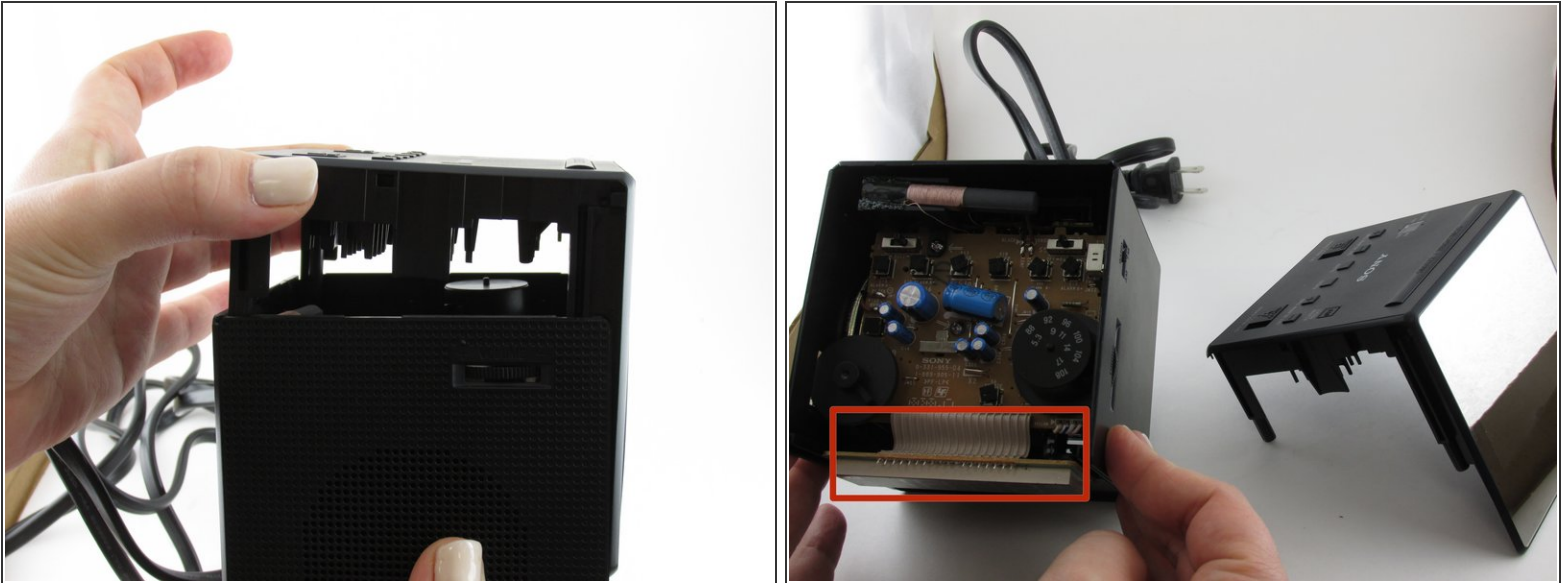
⚠ Make sure that the clock is unplugged and the battery is removed before tampering with device to avoid electrical shock.

Step 2




- Use opening tool to pry apart edges of the top and side portions of the device.

Step 3



- Carefully separate device by gently pulling up on the top portion.

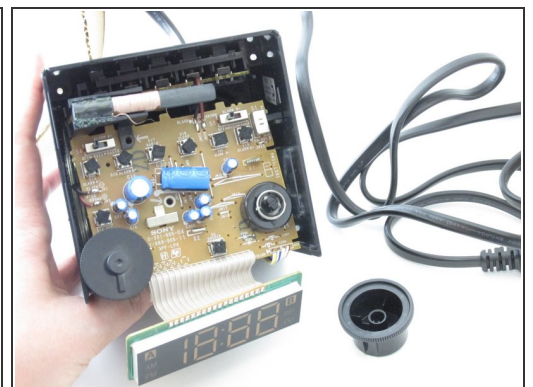
 Be sure to use caution when pulling device apart as the clock display is located close to the front face plate and connected by multiple wires.

Step 4



- To remove the motherboard, gently pull apart the sides of the device.
- ⚠ Do not pull hard on motherboard, as it is still connected by multiple wires inside the device.
- ⚠ Be careful of sharp pieces on the motherboard.
- ℹ It would be helpful, although not necessary, to have someone helping out with this step.

Step 5



- Remove tuner dial by pulling it off of motherboard. This can take a little force to remove.

To reassemble your device, follow these instructions in reverse order.

This document was generated on 2020-03-27 05:53:03 AM (MST).

