



# Sony ICF-C1T Volume Dial Replacement

When the device is not up to your hearing standards, this guide will give you advice on how to replace a faulty volume dial.

Written By: amber woolery



---

# INTRODUCTION

The following guide will give you step by step instructions on how to replace your volume dial effectively.

---



## TOOLS:

- [iFixit Opening Tools](#) (1)
  - [Phillips #0 Screwdriver](#) (1)
-

## Step 1 — Volume Dial



- Remove 4 (14mm) screws from the underside of the device./**A screwdriver should be included in this step because the 14mm screws should be removed.**

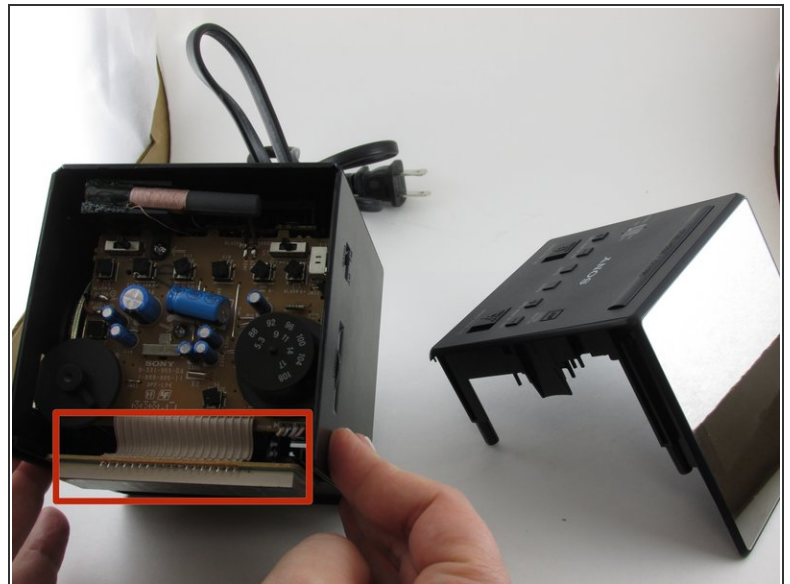
**⚠** Make sure the clock is unplugged and the battery is removed before tampering with the device./**Make this step a caution note and change the color to make the caution note a separate color.**

## Step 2



- Use the opening tool to pry apart edge of the top and side portions of the device./**A reader might not know what the opening tool is. Maybe mention a more universal tool in this step.**

## Step 3

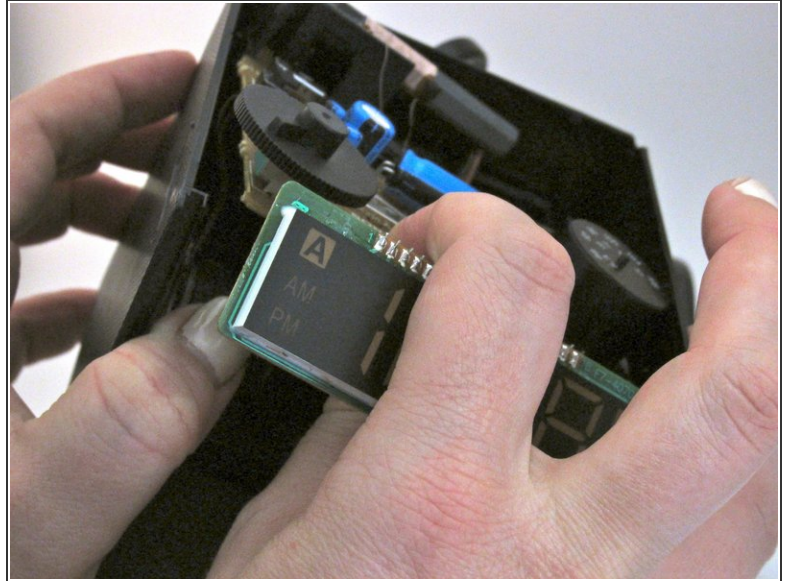


- Carefully separate device by gently pulling up on the top of the clock/radio/ **No edits necessary**

**⚠** Use caution when pulling top of clock of as the clock display is located directly behind the face plate and still connected by multiple wires./**Make a caution note of this step. Also make this note a different color.**

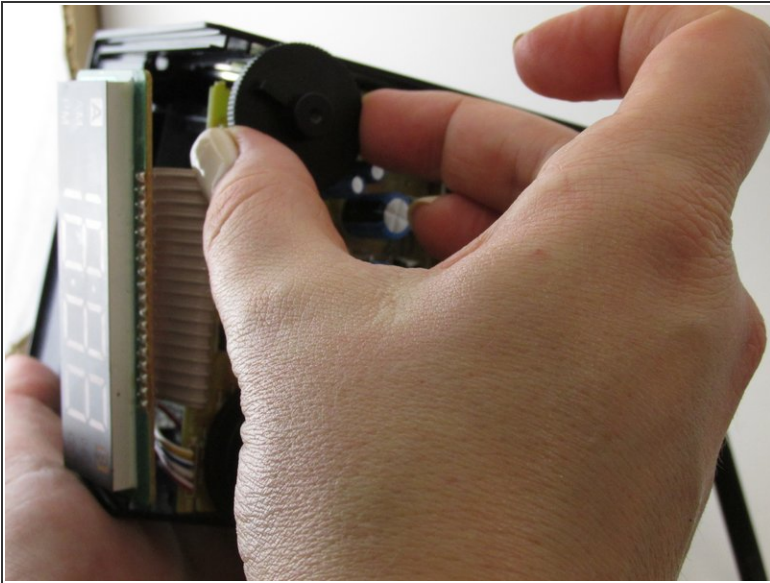


## Step 4



- To remove the motherboard, gently pull apart the sides of the device. **/No edits necessary.**
- ⚠ Do not pull hard on the motherboard, as it is still connected by multiple wires inside the device. **/Make this a caution note and make the note a different color.**
- ⚠ Be careful of sharp pieces. **/Make this a caution note and make the note a different color.**
- ⓘ It would be helpful, although not necessary, to have someone helping out with this step. **/ Make this step a different color from the step above.**

## Step 5



- Remove volume dial by pulling it off the motherboard. This can take a little force to remove. **/No edits necessary.**

To reassemble your device, follow these instructions in reverse order.