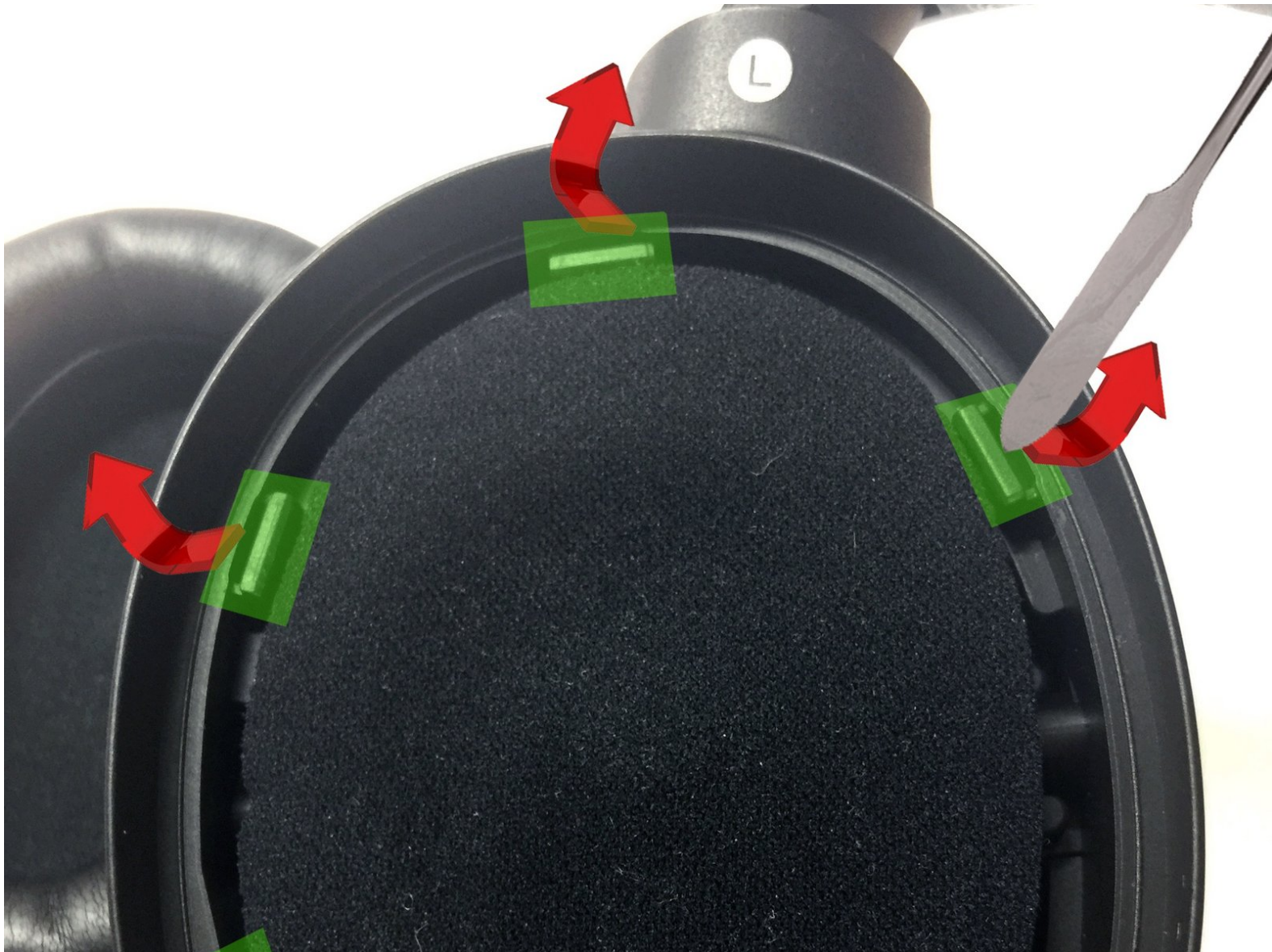




Sony MDR-1000X Noise Cancelling Headphone Teardown

This is a simple guide on how to take apart the headphone and access the internal parts. *updated to include access to battery compartment.

Written By: dinoofsg



This document was generated on 2019-11-05 06:43:19 PM (MST).

INTRODUCTION

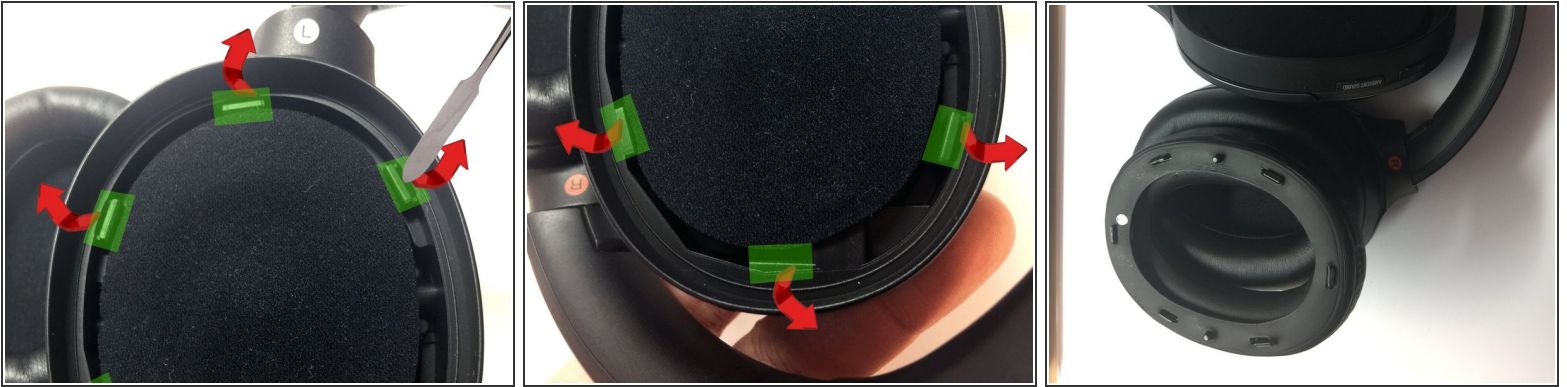
I had a minor spill on my brand new MDR-1000X (*ouch!) and the power / NC / ambient sound buttons became harder to press down. I suspect some of the coffee residue might be the cause so i decided to take the headphones apart...



TOOLS:

- [Spudger](#) (1)
 - [1 x Philip Screw Driver](#) (1)
-

Step 1 — Remove the Foam Cup



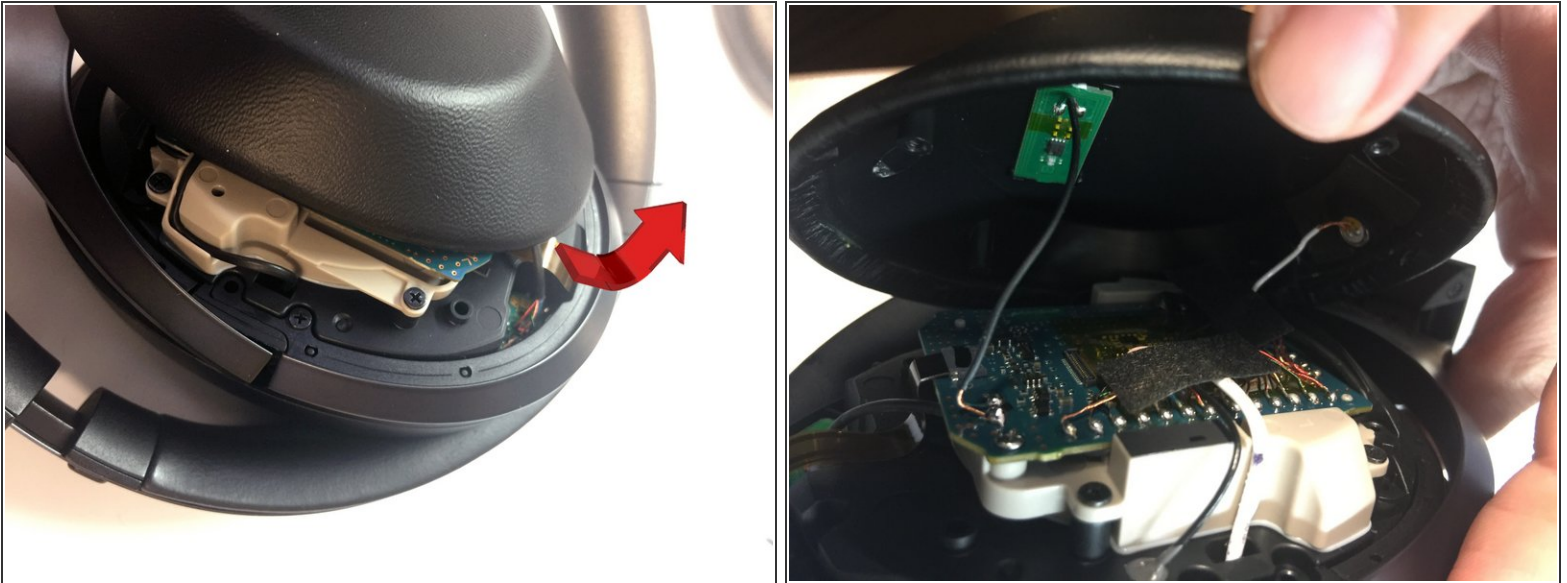
- Use a spudger to pry the six notches holding the foam cup from the headphone.
- There are three notches at the top and three at the bottom.

Step 2 — Remove 4 Screws



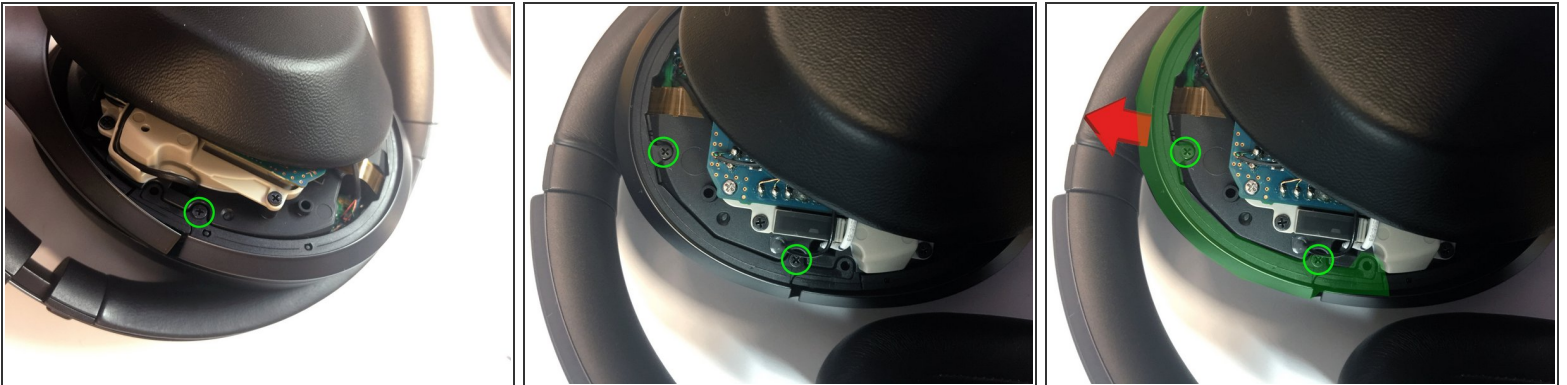
- After removing the ear foam cup, you will see a piece of circular foam. Gently lift the top to locate 2 screws and lift the bottom to locate another 2 screws.
- Remove all four screws.

Step 3 — Remove Outer Cover



- Use a spudger to go around the outer cover to remove it. ***Note there are cables still connected to the cover thus do not take apart with force.**

Step 4 — Remove 3 Screws



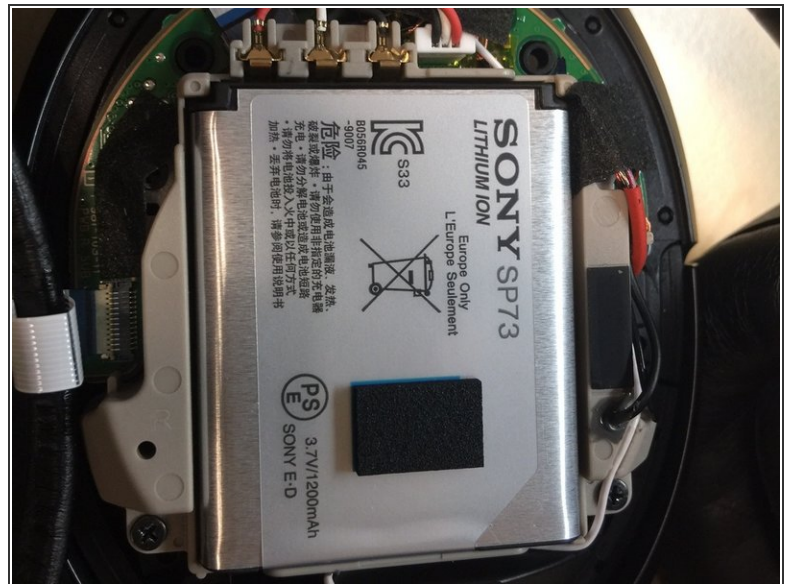
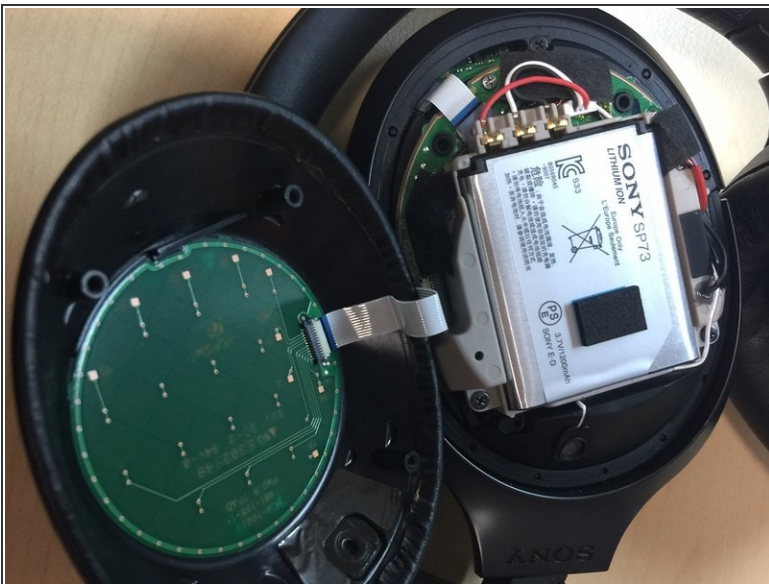
- Locate 3 screws around the lower ring. Remove all 3 of them and gently remove the ring.

Step 5 — Access the Power / NC / Ambient Buttons



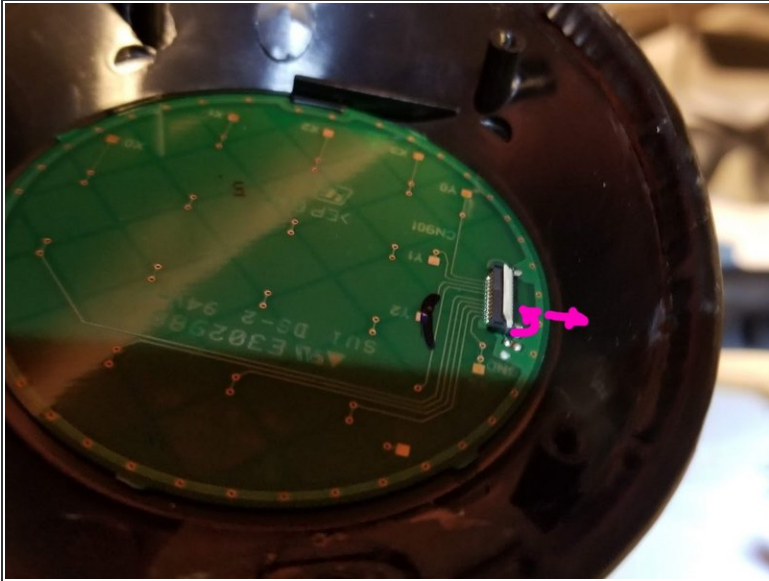
- You will be able to pop out the three buttons! To put back the items, reverse the steps. :)

Step 6 — Access the battery compartment



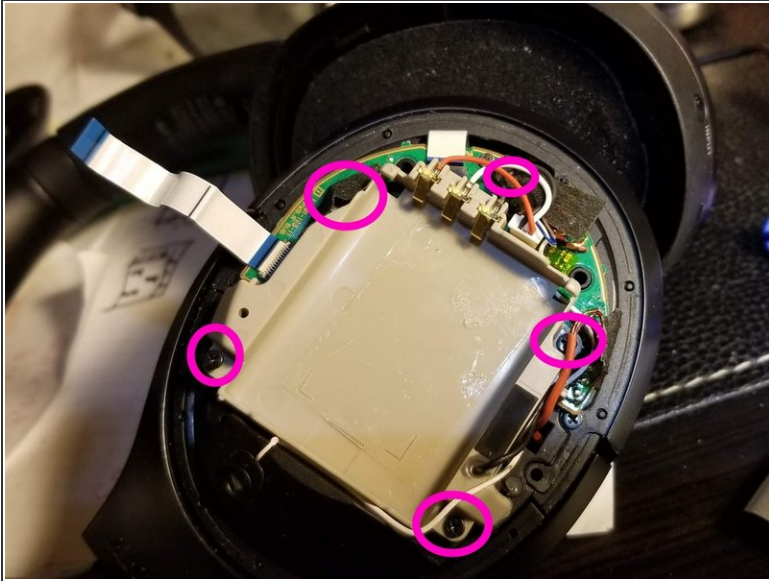
- To access the battery compartment, repeat Step 1 - 3 to open up the other side of the headphone.
- The battery on mine is a model: Sony SP73, 3.7V, 1200mah Li-ion battery. The battery is held on by adhesive.

Step 7 — Disconnect The Earcup



- Gently lift the white flap on one side of the ribbon cable connecting the ear cup to the main board and gently slide the cable out. Rock it back and forth a little if needed.

Step 8 — Remove The 4 Screws Holding Down The Beige Mount



- Remove the tape if needed, and then carefully remove the 4 Screws Holding Down The Beige Battery Mount, and the silver screw holding down the main board.

⚠ Caution!!! The battery mount is wired to cables on the back side of it, do not remove it completely, we just need to gently move the circuit board below.

Step 9 — Lift The Battery Mount And Circuit Board And Remove The Port Cover




- Gently shift the battery mount and main board without completely removing them to access the three screws holding in place the charging port cover.
- Slide the charging port cover out to reveal the charging port board.

Step 10 — Remove The Charging Port Board



- Remove the single screw holding the charging port in place and slide the ribbon cable out from the main board to detach it.

 Note that this ribbon cable has no white latch, it's held in place by the tension of the cable and the case itself so don't try to pry anything up.

