



# Sony MDR-IF33K Teardown

Written By: bac



## INTRODUCTION

Here's a Sony wireless stereo earphone system consisting of an infrared transmitter and receiver pair, dating from around 1993. At that time, there was no such thing as an iPod and so the smallest personal audio players were cassette tape Walkmans or compact disc Discmans. With this wireless earphone kit, you could listen to your stereo, free to wander around the room without one of those 10 foot headphone cords or without a relatively bulky audio player attached to your belt.

Of course nowadays, you can have thousands of songs in an even smaller device attached to your shirt sleeve, so this kind of audio accessory is not so interesting any more for most consumers. However, this same basic technology is still in use in many places - for example some auditoriums will have large IR arrays providing wireless audio to the hearing impaired in the audience.

Let's take it apart to see what's inside...



### TOOLS:

- [Phillips #0 Screwdriver](#) (1)
  - [Phillips #1 Screwdriver](#) (1)
  - [Spudger](#) (1)
-

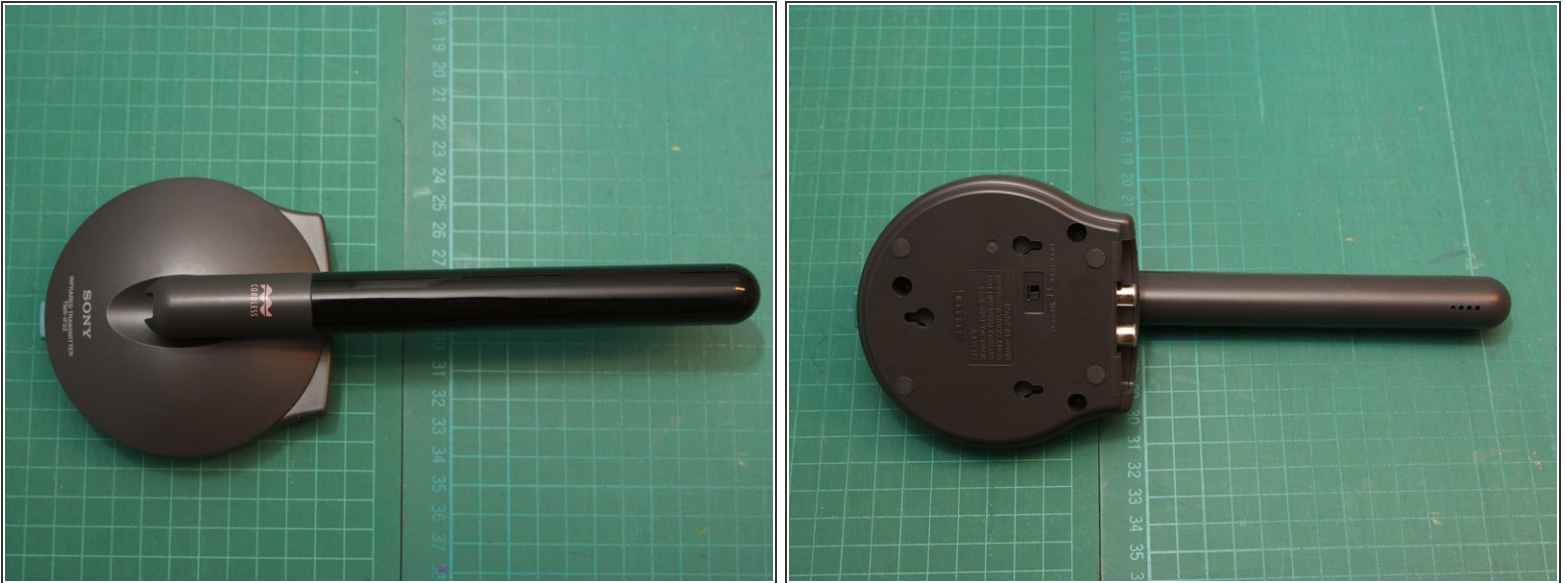
## Step 1 — Sony MDR-IF33K Teardown



- The main components of this kit are:
  - TMR-IF33 wireless transmitter
  - IFR-33 wireless receiver
  - 9V DC output AC adapter
  - Set of headphones
- I'm not sure if this product was sold in North America, this one was purchased in Japan. In the second photo you can see the original packaging.
- I do know that Sony used the same IR transmission system in some of its North American TVs - these components work with the wireless headphones that came with my old XBR TV.

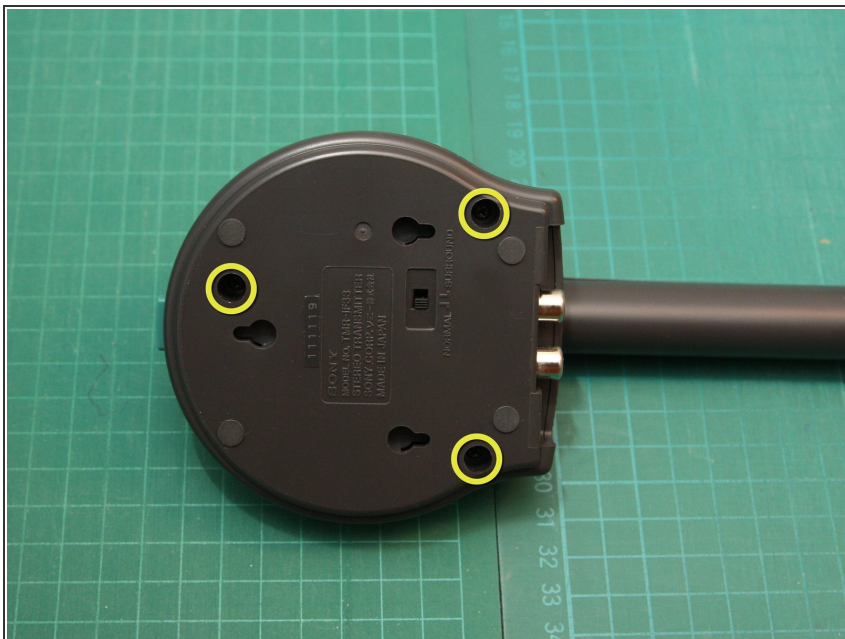


## Step 2



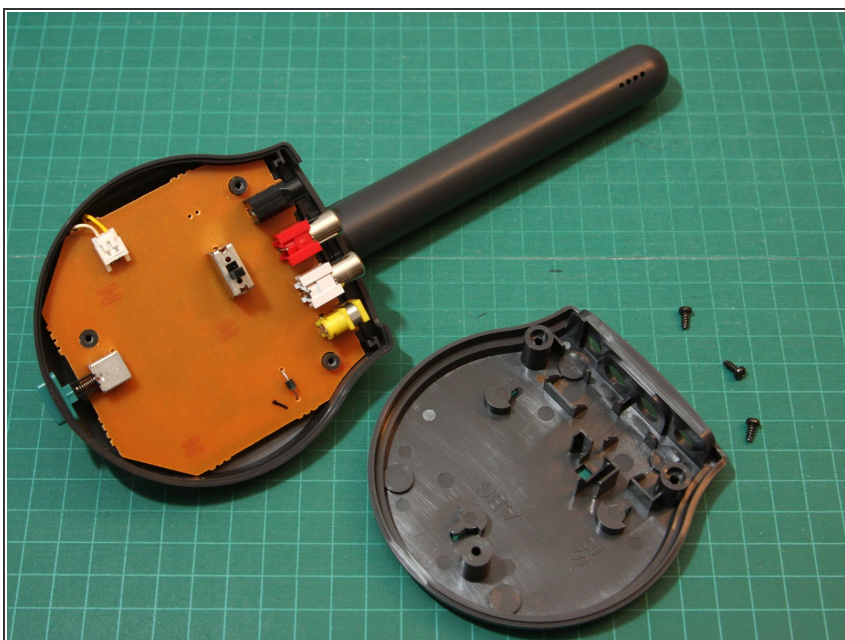
- i** Here are top and bottom views of the TMR-IF33 infrared transmitter. The transmitter base holds a pivoting mast containing an IR LED array behind a dark filter/lens.
- The transmitter has a stereo audio mini-jack input, stereo RCA jack inputs, and a 9V DC input jack. On the bottom there is a switch for normal/surround sound.
  - On the back you can see some keyed mounting holes for optional wall-mounting of the transmitter.
  - We'll take this transmitter apart first...

## Step 3



- First, remove the 3 screws in the recessed holes on the bottom of the transmitter using a Phillips #1 screwdriver.

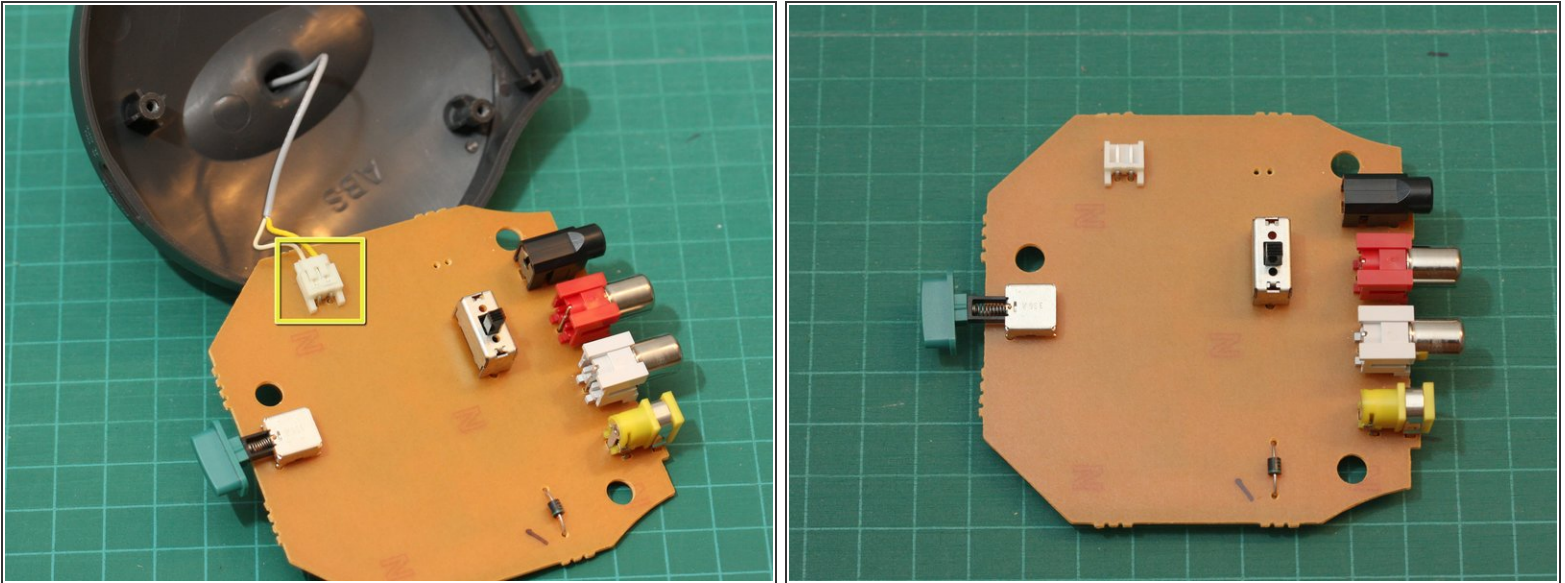
## Step 4



- Once the screws are removed, you can lift off the bottom cover.

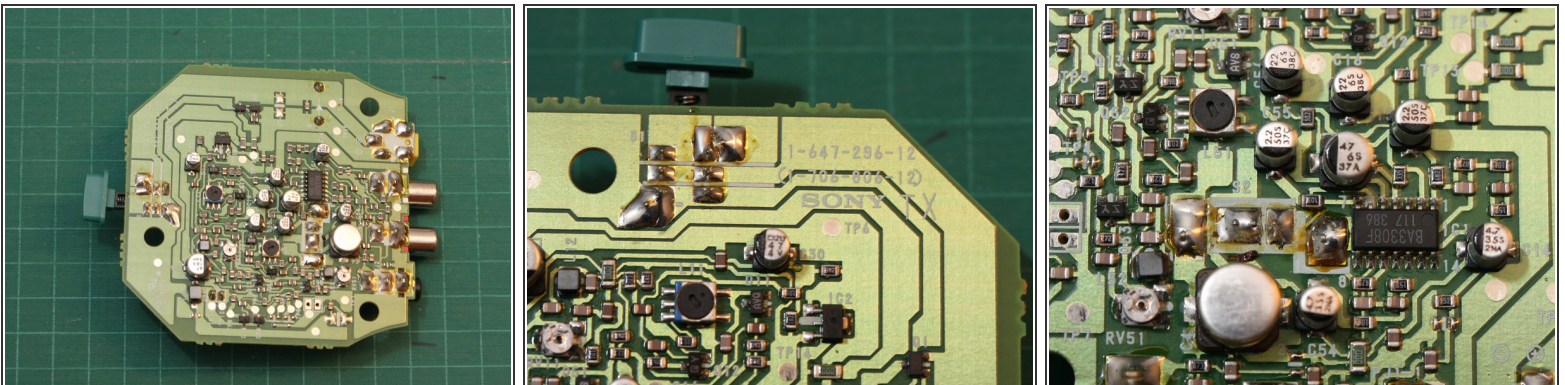


## Step 5



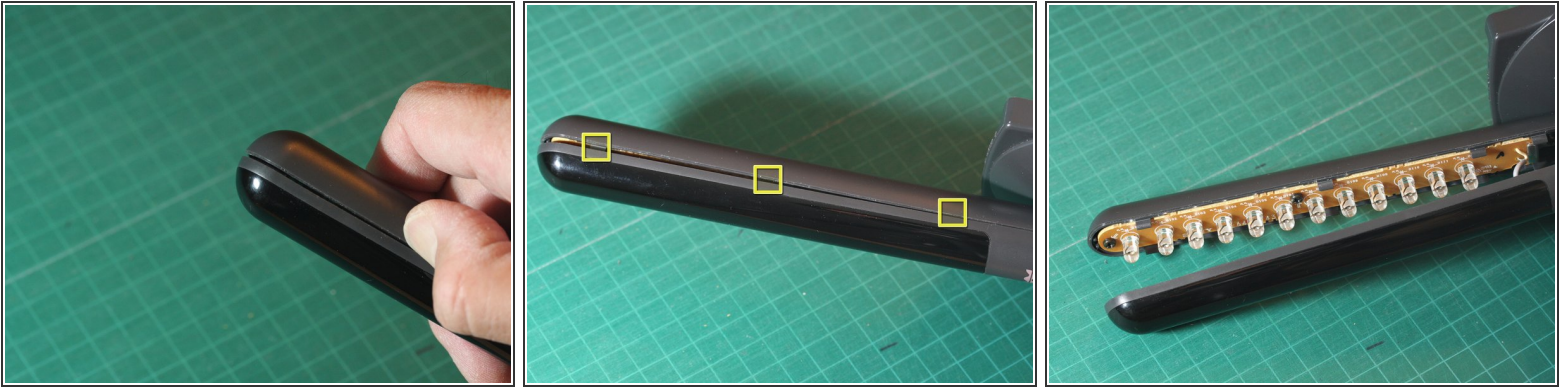
- Carefully disconnect the connector shown from the circuit board. The wires go to the infrared LED array, which we'll see in a moment.
- The circuit board on this side is very plain. The green button on the left is the power switch.
- Hopefully there's more to the transmitter circuit than that lone diode visible on this side...

## Step 6



- Here's the business side of the transmitter PCB, along with a couple closer views.
- The transmitter consists of mainly discrete components. The lone IC in the 14 pin DIP packages is a BA3308F dual audio preamplifier.

## Step 7



- Next we'll open the housing for the IR transmitter array...
- Using either your thumbnail or a spudger, carefully pry the housing open along the seam.
- There are 3 hidden tabs on either side of the transmitter mast (see markers in 2nd photo). Pop these open carefully and the lens portion of the housing will come off.

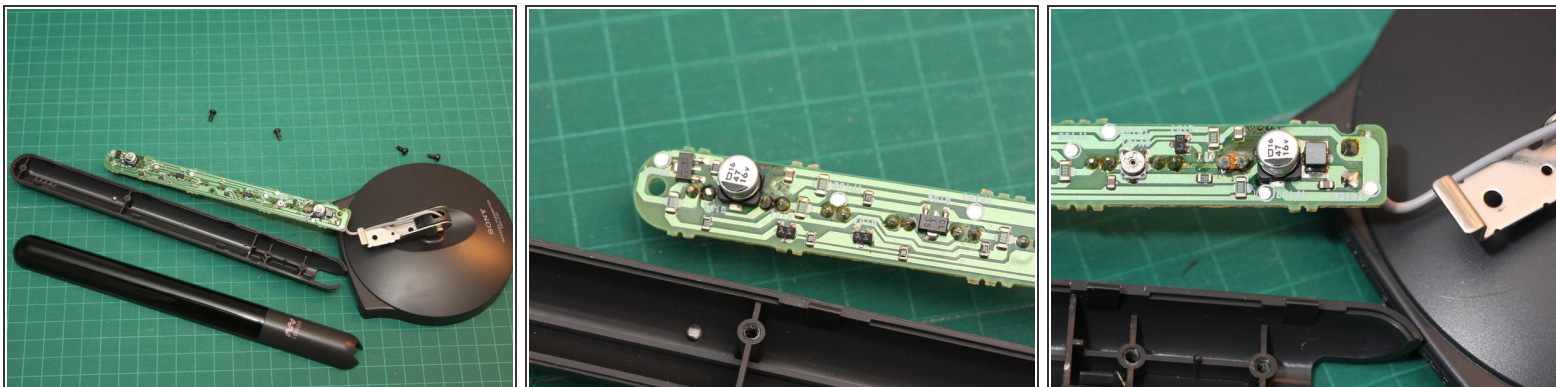
## Step 8



- Here's the transmitter mast with the front lens/cover of the housing removed. Inside we see an array of infrared LEDs.
- Next remove the 4 Phillips screws. Two of the screws fasten the metal hinge to the back half of the housing (one is partially obscured by the hinge in the first photo).
- The other two screws fasten the LED circuit board to the back half of the housing.
- The third photo shows a closer view of some of the infrared LEDs. There are 12 LEDs in all. They emit no visible light - but did you know? the IR beam can be seen by most camcorders and digital cameras.
- ⓘ The LEDs transmit the audio signal using FM modulation of the IR beam. The carrier frequencies used are 2.3MHz for the left channel, and 2.8MHz for the right. The specification for maximum range is 9 meters.



## Step 9



- Here's the disassembled transmitter housing and a view of the rear side of the LED array circuit board.
- Ho hum... all discrete components here, nothing too exciting.
- That's it for the transmitter. Next up, the receiver...

## Step 10



- i** Here are front and rear views of the IFR-33 infrared receiver. It's bigger than an iPod shuffle and carries no songs! ...or maybe it carries an infinite number of songs, connected to your stereo or other audio system, depending on how you look at it...
- On the back, you'll find a swiveling clip and the battery compartment cover.
  - In use, the receiver can be clipped to your belt or shirt. The kit also comes with a lanyard (not shown) that let's you wear the receiver around your neck. Standard stereo earphones can be plugged into a jack at the bottom of the receiver.
  - The receiver is powered by a single AA battery.

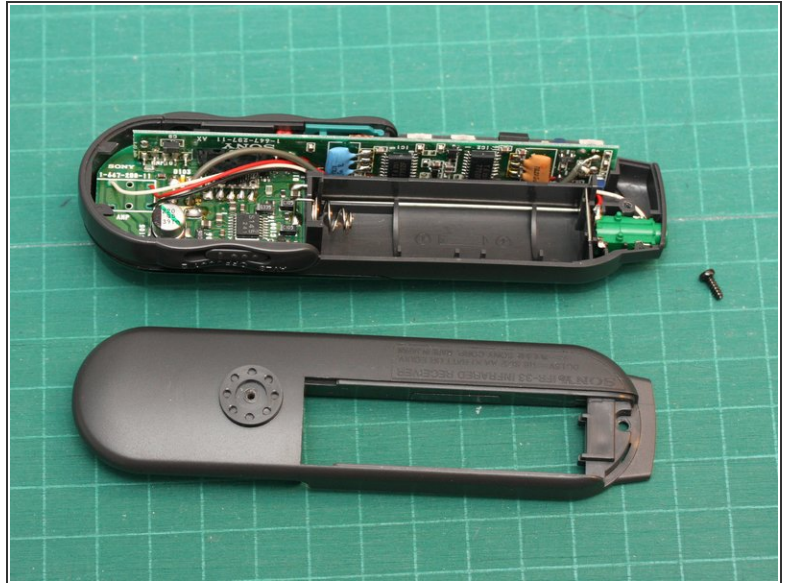
## Step 11



- First, remove the screw in the center of the clip using a Phillips #0 screwdriver, and then remove the clip

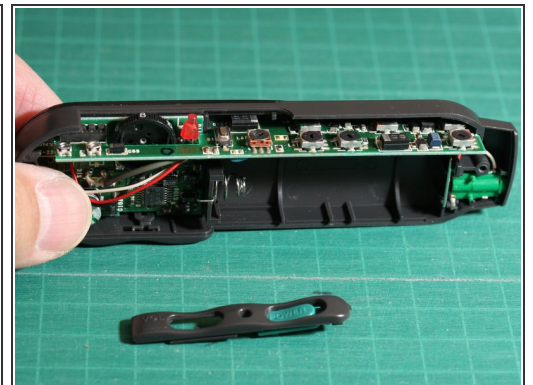
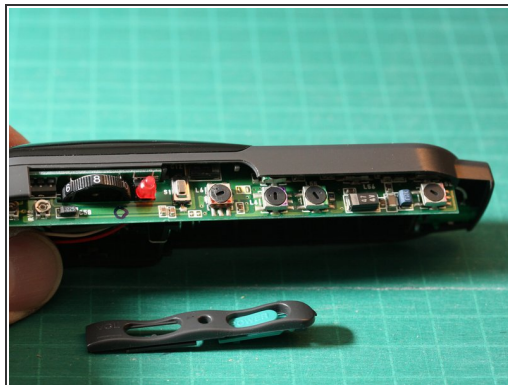
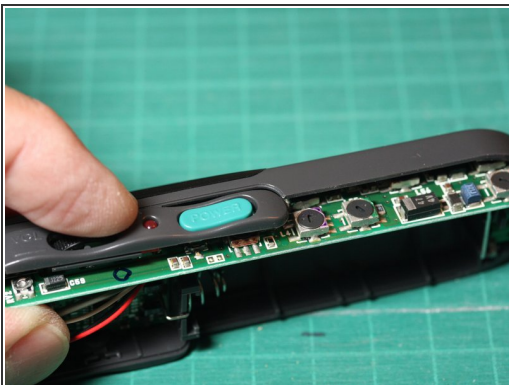


## Step 12



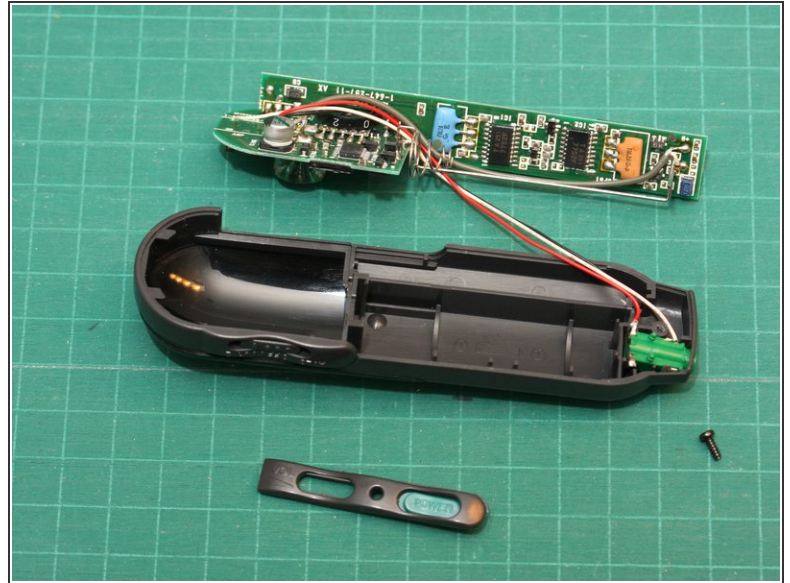
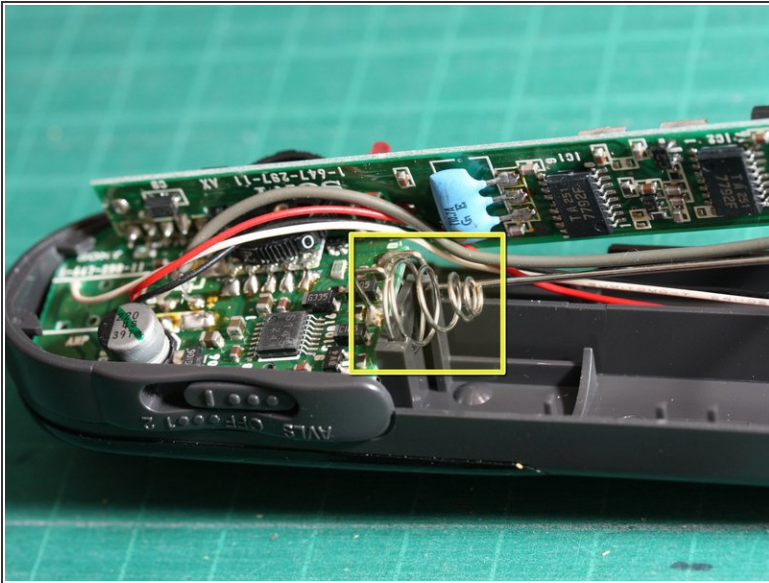
- Next remove the battery cover.
- This will reveal a screw which you can remove using a Phillips screwdriver
- With this screw removed, you can now lift off the back half of the receiver case, revealing the circuitry inside.

## Step 13



- Carefully remove the bezel around the volume dial power switch and on/off indicator LED. Be careful not to lose the small power button cap which will come loose after removing the bezel

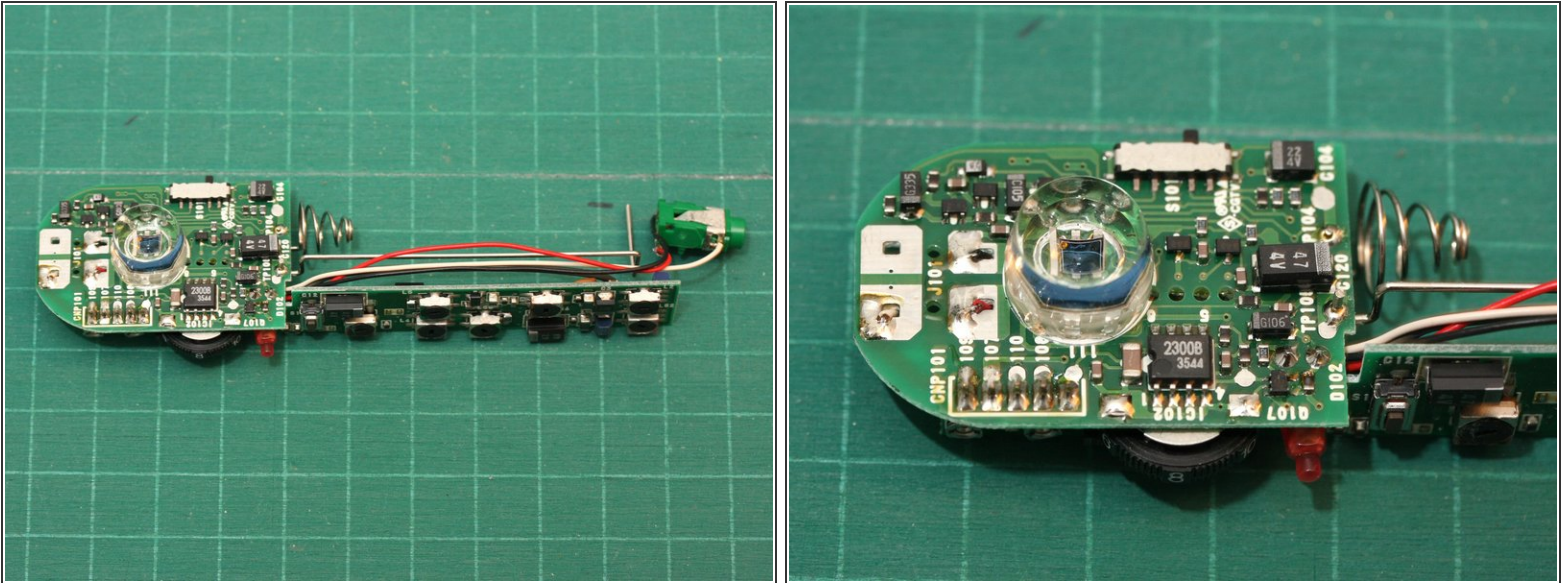
## Step 14



- The receiver circuitry resides on two small circuit boards soldered together perpendicularly.
- To remove the circuit board, first carefully pull the battery contact/spring up out of its mounting slot. This should free the circuit board.
- The 3 wires connect the circuit board to the stereo earphone jack (green).

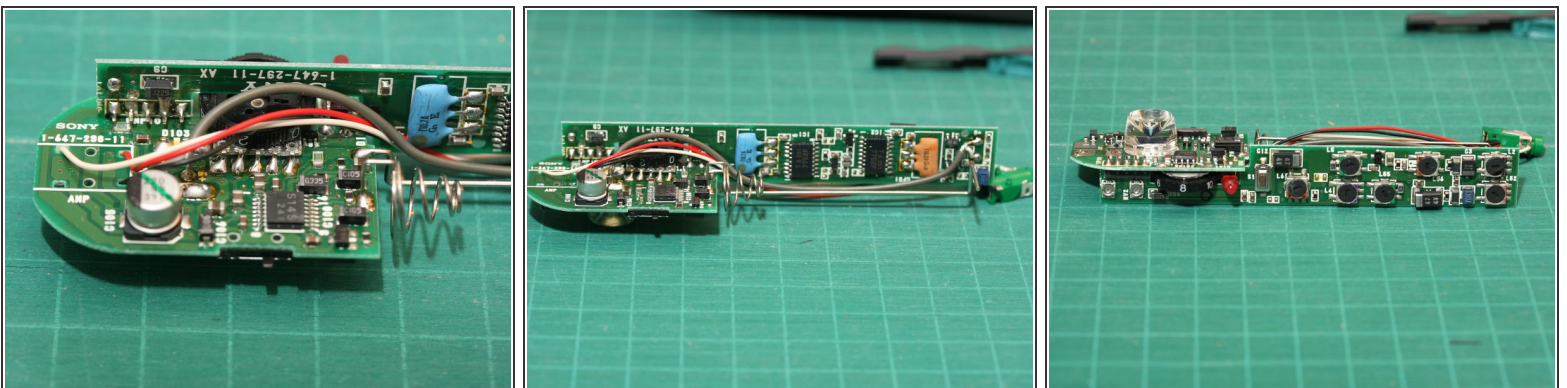


## Step 15



- Here are a couple views of the receiver circuit board.
- You can see the IR optical receiver under the large clear plastic lens. It's not obvious from the photos, but the cylindrical lens has a deeply concave front.
- Once again, we notice mostly discrete components. The single IC in an 8 pin DIP package is a 2300B optocoupler chip.

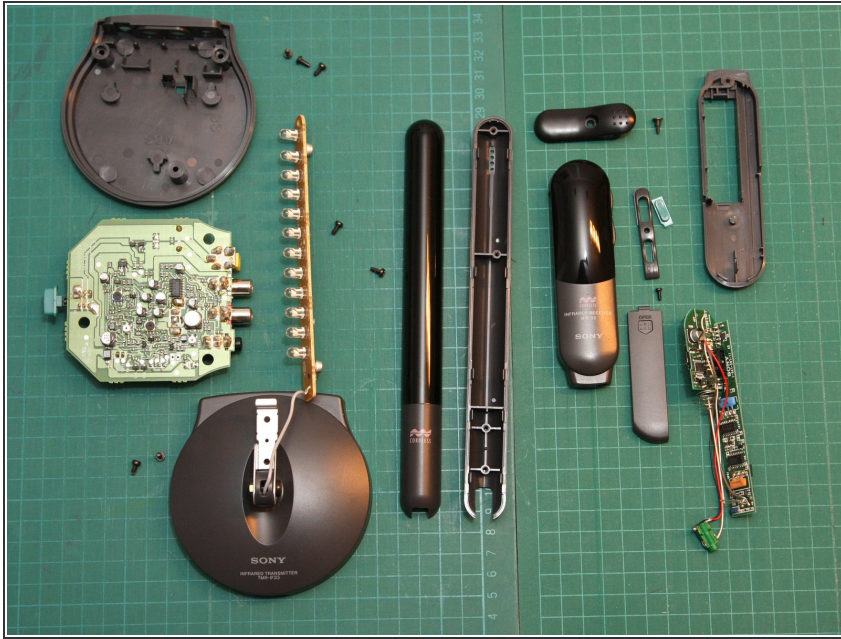
## Step 16



- A few more other views of the receiver circuit.



## Step 17



- Finally, here are all the disassembled components.
- That's it - I hope you found this interesting!

To reassemble your device, follow these instructions in reverse order.