



# Sony Mavica MVC-CD1000 Lens Replacement

This is a short procedure on how to replace the lens replacement in the Sony Mavica MVC-CD1000.

Written By: YuFan Ma



---

## INTRODUCTION

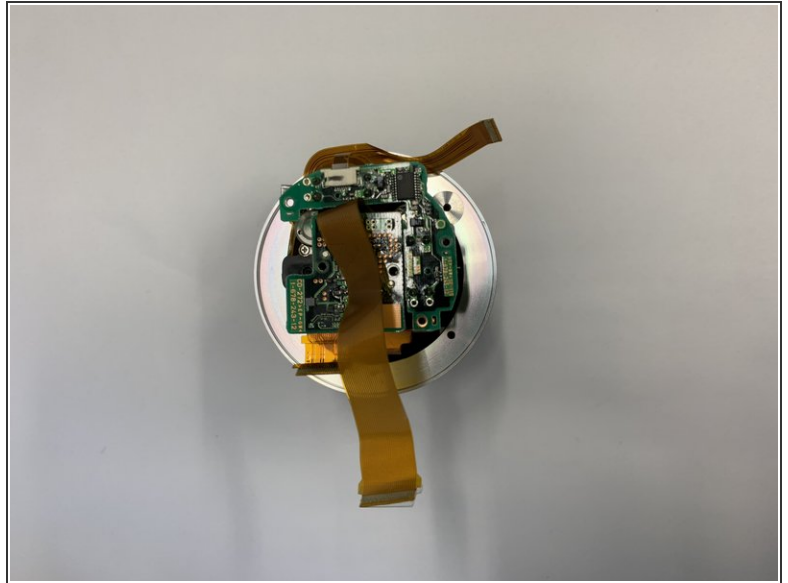
If your camera isn't properly displaying images or if the images are distorted, your lens may be the source of the problem. It's important to keep your camera lens clean so that the resulting images aren't dirty or filled with junk. Refer to this guide if the camera's lens is not working or there is a problem with it!



### TOOLS:

- [Suction Handle](#) (1)
  - [Phillips #0 Screwdriver](#) (1)
-

## Step 1 — Lens



- Rotate the shell of the base in the anti-clockwise direction so that you can detach it from the lens.

## Step 2



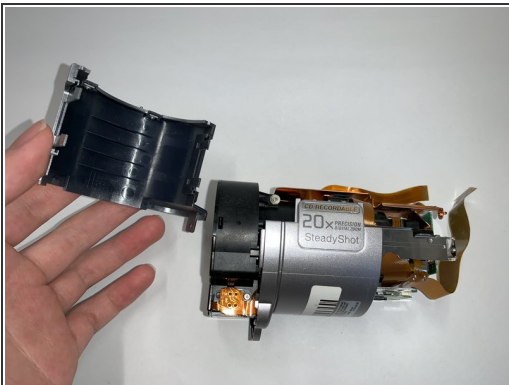
- The outer casing of the lens consists of two outer casings that are secured by an end cap that connects them.

### Step 3



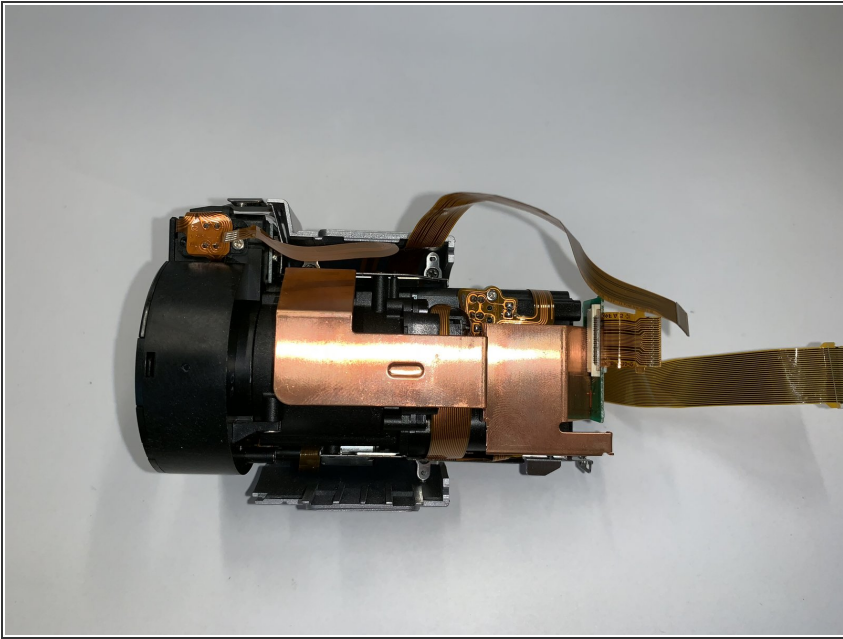
- Remove the front end cover from the lens.

### Step 4



- Place the lens section horizontally on the workbench and pry open the top cover of the lens.

## Step 5



- After removing the shell of lens replace the inside part as shown in the photo.

To reassemble your device, follow these instructions in reverse order.