



Sony NEX-5R Lens Mount Replacement

This guide will lead you through the steps on how to replace the lens mount of your Sony NEX-5R.

Written By: Emily Trujillo



INTRODUCTION

Replacing the lens mount requires removing any lens that is already attached then simply removing the casing of the lens mount.



TOOLS:

- [Phillips #00 Screwdriver](#) (1)
 - [Tweezers](#) (1)
-

Step 1 — Lens Mount



- Hold lens and camera securely with two hands.
- With the hand holding the camera, push down on the lens button. Twist the lens counterclockwise and pull out to release lens.

Step 2



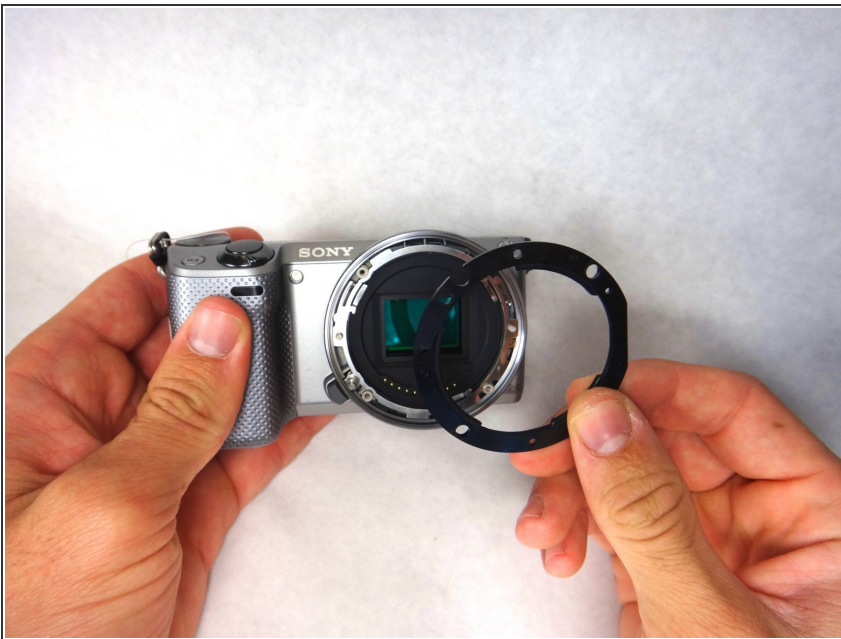
- Using your screwdriver, remove the four (3.5 mm) Phillips screws on the front face of the lens mount.
- ⓘ Make sure to keep track of these screws and not misplace them.

Step 3



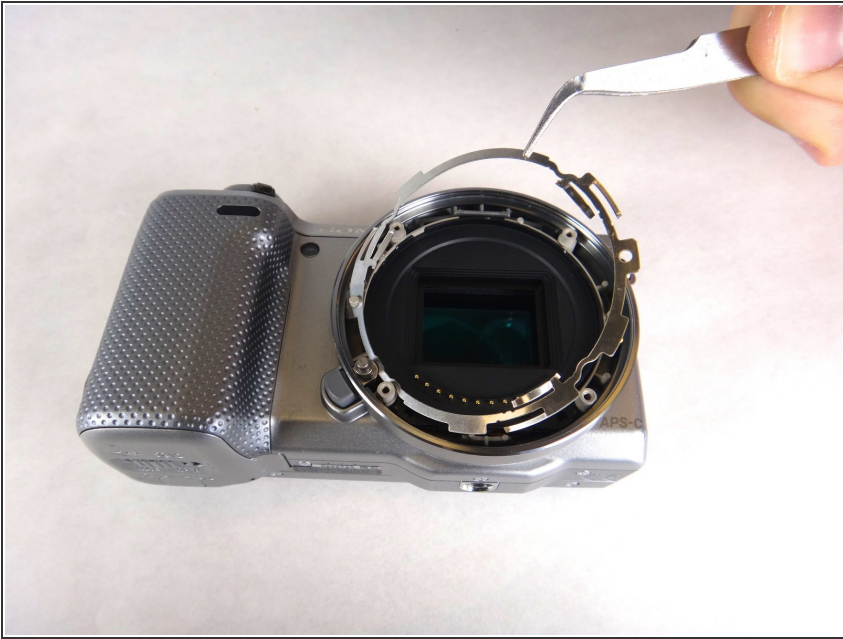
- Remove the silver plate by gently pinching with your fingers.

Step 4



- Now the black plate should be exposed. You can remove this again by gently pinching with your fingers and lifting up.

Step 5



- Using the tweezers, grab the thin silver ring and lift up.

Step 6



- The camera mount should now be barren and look like this.

To reassemble your device, follow these instructions in reverse order.