



# Sony NEX-5R Top Panel Replacement

This guide will be for the replacement of the top panel on the Sony NEX-5R. The guide is useful if the top panel, or any of the buttons on it are damaged.

Written By: Steven Fronczak



## INTRODUCTION

The removal of the top panel involves the removal of the front case to be able to reach the screws necessary for the removal of the top panel.



### TOOLS:

- [Phillips #00 Screwdriver](#) (1)
  - [Spudger](#) (1)
-

## Step 1 — Front Case



- Open the battery pack door by moving the slider to "OPEN".
- Remove the 3.25 mm silver screw inside the battery pack with a Phillips screwdriver.

## Step 2



- Remove the 3.25 mm exterior screw with a Phillips screwdriver.

## Step 3



- Use the spudger to raise the corner of the case from the camera.
- One component of the front case should now be separate from the camera.

## Step 4 — Rear Case



- Remove the three (3.5 mm) screws from the bottom of the camera with the Phillips screwdriver.

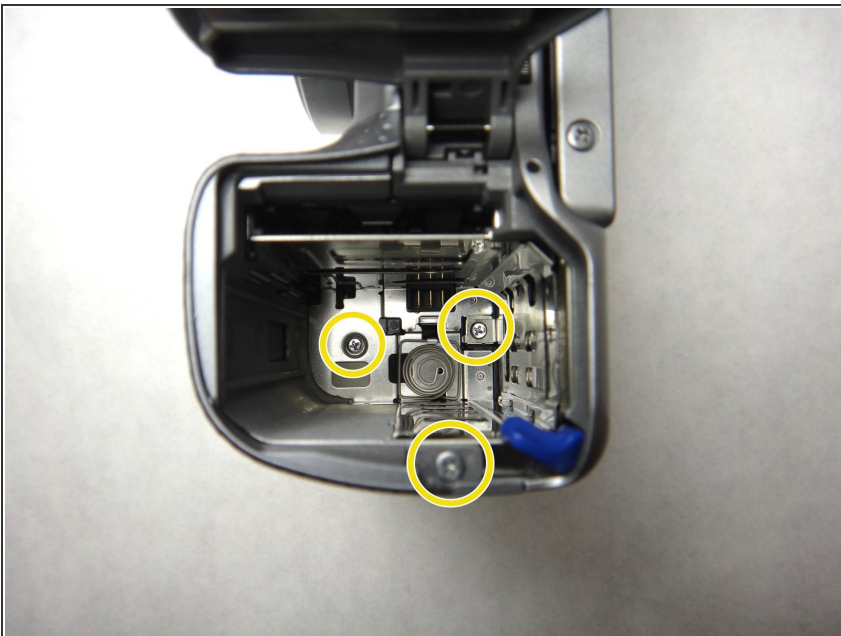


## Step 5



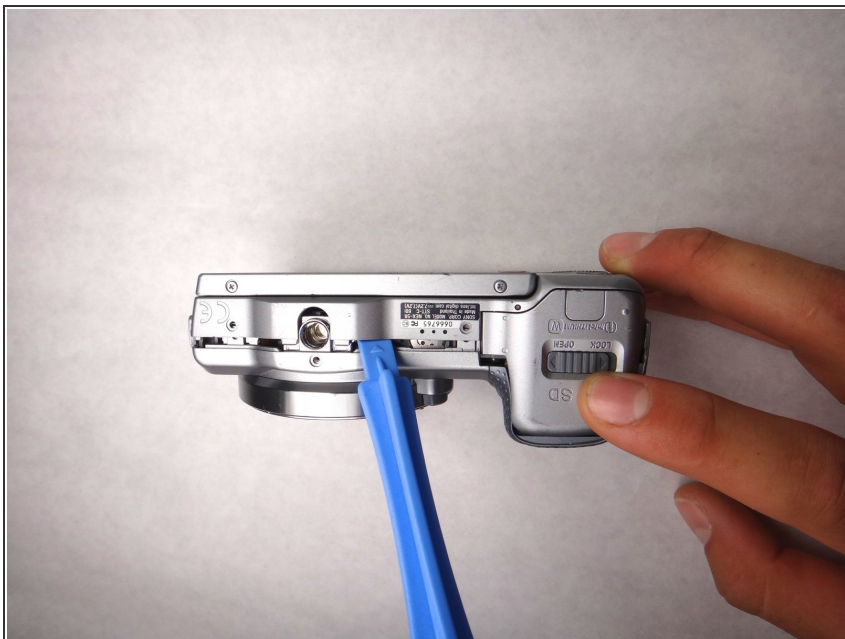
- Open the HDMI port, and remove the the two (3.5 mm) Phillips screws exposed on that side.

## Step 6



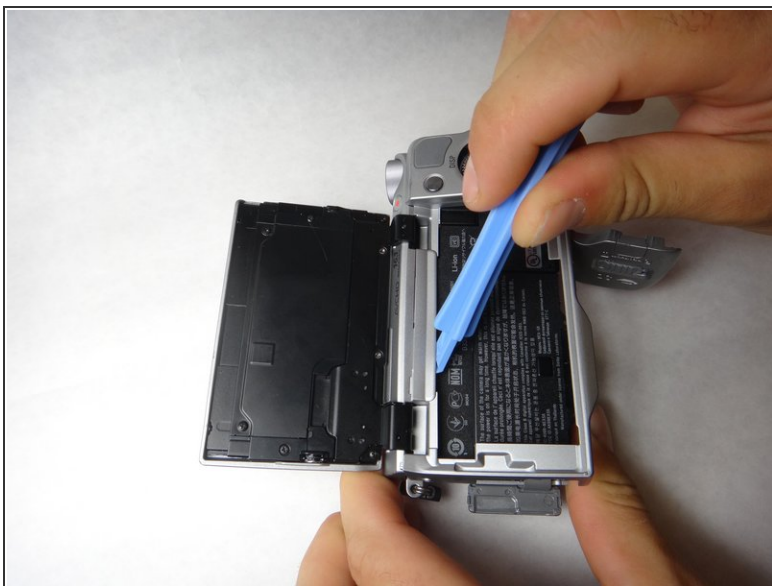
- Remove the two 4mm screws from the interior of the battery pack, and one 3.5mm screw from beside it.

## Step 7



- Looking at the bottom of the camera, use the spudger to lift the rear case away from the camera body.

## Step 8



- Using the spudger again, carefully pry from the top of the camera to remove the back frame.
- The back frame is fragile, so use the spudger gently.

## Step 9



- The back case should now be removed and look like this.

## Step 10 — Top Panel



- Remove the 3.5mm phillips head screw underneath the flash port



## Step 11



- Remove the 3.5mm phillips head screw on the top left of the camera.

## Step 12



- Use the spudger tool to go around the seam of the top panel. The top should easily lift off.



## Step 13



- This is what the camera and top panel should look like after you have completed the guide

To reassemble your device, follow these instructions in reverse order.