



Sony NEX-5T Motherboard

This guide will show how to open up the camera and remove the motherboard.

Written By: William Kleinman



INTRODUCTION

The motherboard is the brains of the camera. Replacing the motherboard requires completely opening up the camera.



TOOLS:

- [Phillips #0 Screwdriver](#) (1)
 - [Tweezers](#) (1)
 - [iFixit Opening Tools](#) (1)
-

Step 1 — Battery



- Open the battery compartment by sliding the lock to the right.

Step 2



- Push in the blue lever.
- i** The battery is on a spring so make sure you have control over it, or it might fly out.


Step 3



- Pull the battery out.

Step 4 — SD Card



 Make sure to turn the cameras power switch to off before beginning this step.

- Begin by holding the camera upside down with the bottom facing you. Identify the housing for the SD card, and battery.
- You will use your other hand to slide the lock switch to this housing to the right. This will release the cap, allow it to come upwards.

Step 5



- Now that the cap to the battery and SD card housing is open, the SD card is visible.
- You will need to press down on the SD card until you hear a click. Release the SD card and it will now be available to remove.
- Grip the SD card and pull it out of the SD card slot.


Step 6



- To reinsert the SD card place it in its housing.
- You will then need to push down on the SD card until you hear a click.
- ❗ To ensure the SD card is in place you can visually inspect it. The SD card should be flush with the housing.

Step 7



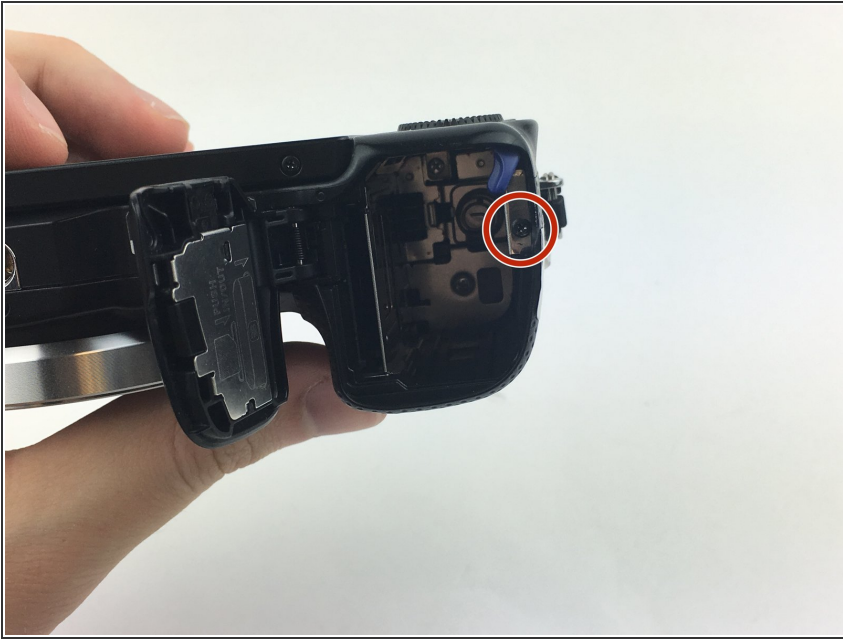
- You may now close the housing for the SD card and battery.
- Close the cap and while holding it down slide the locking tab to the left. This step should lock the cap in place.
-  Your SD card is now safely in place and you may turn your device on.

Step 8 — Motherboard



- Remove the 3.5 mm exterior-side screw.

Step 9



- Remove the 3.5 mm bottom screw from the battery compartment.

Step 10



- Pry off the front-side cover with the small plastic spudger.
- ⚠ There is a adhesive holding the front-side cover to the camera frame, so more force may be necessary to remove it. Be careful as to not break the cover while prying.

Step 11



- Remove the 3.5 mm bottom screws.

Step 12



- Open the USB cover on the side of the camera.
- Remove the 3.5 mm USB side screws.

Step 13



- Remove the 4mm screws at the back of the battery compartment.

Step 14



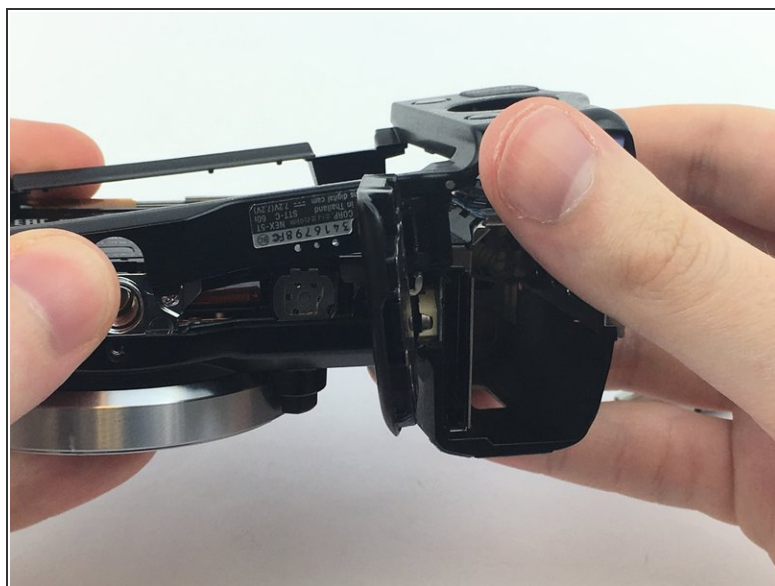
- Remove the 3.5 mm top flash-mount screw.

Step 15



- Flip the screen up.
- Pry the top cover off with the small plastic spudger.

Step 16



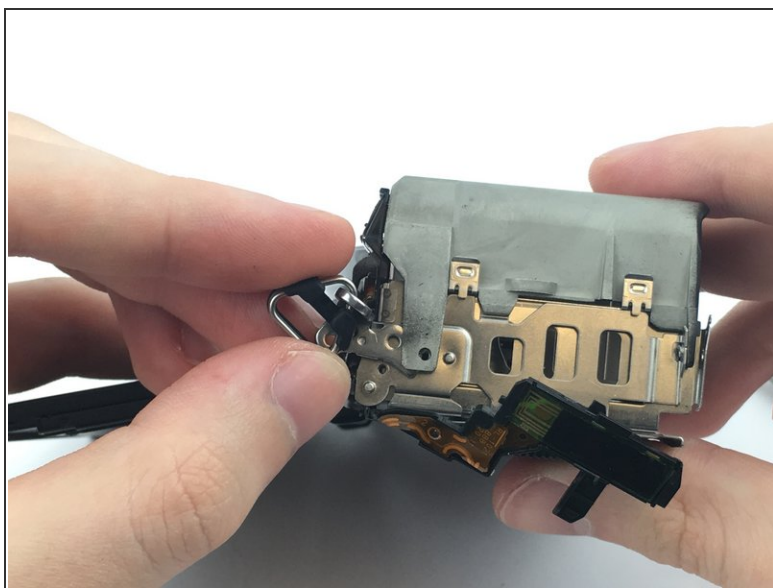
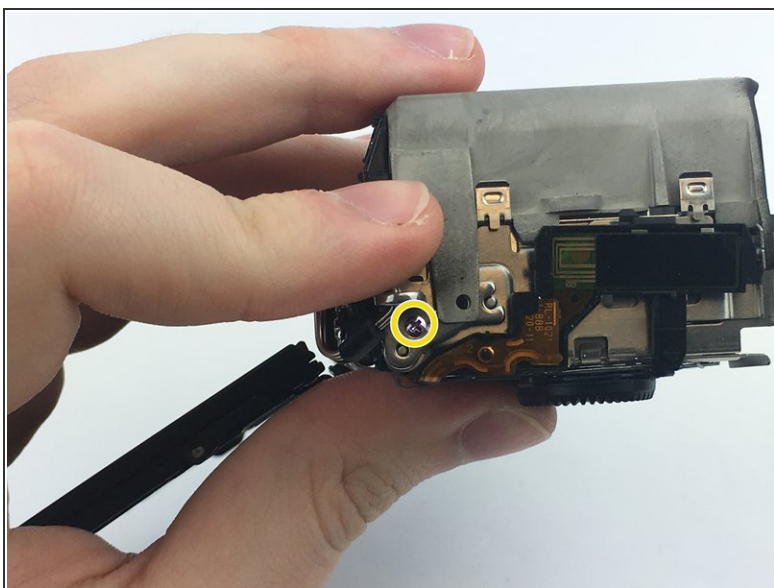
- Pry the top part rear cover off with plastic spudger.
- Flip the camera so the sensor faces down and push up on the rear cover from the battery compartment.

Step 17



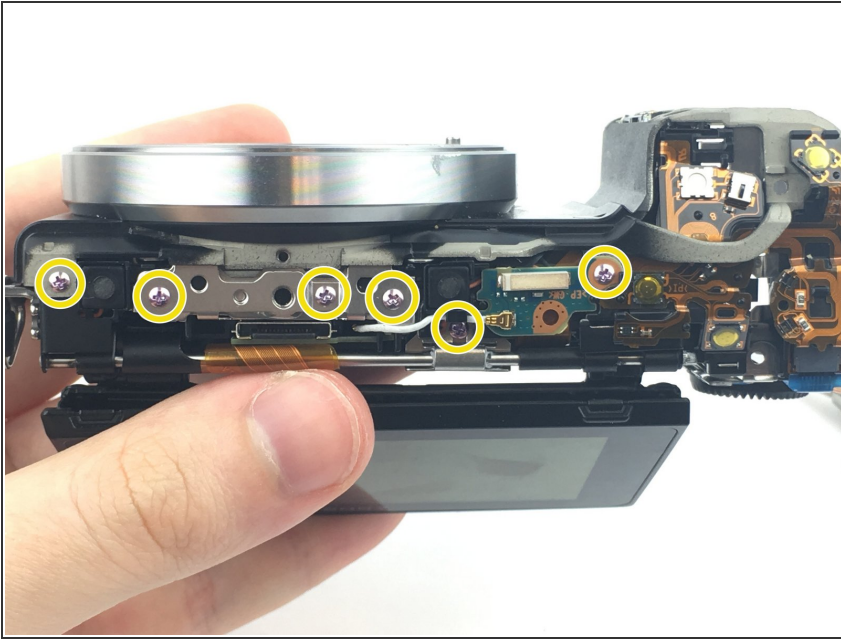
- Remove the 2.25 mm tripod mount screws.

Step 18



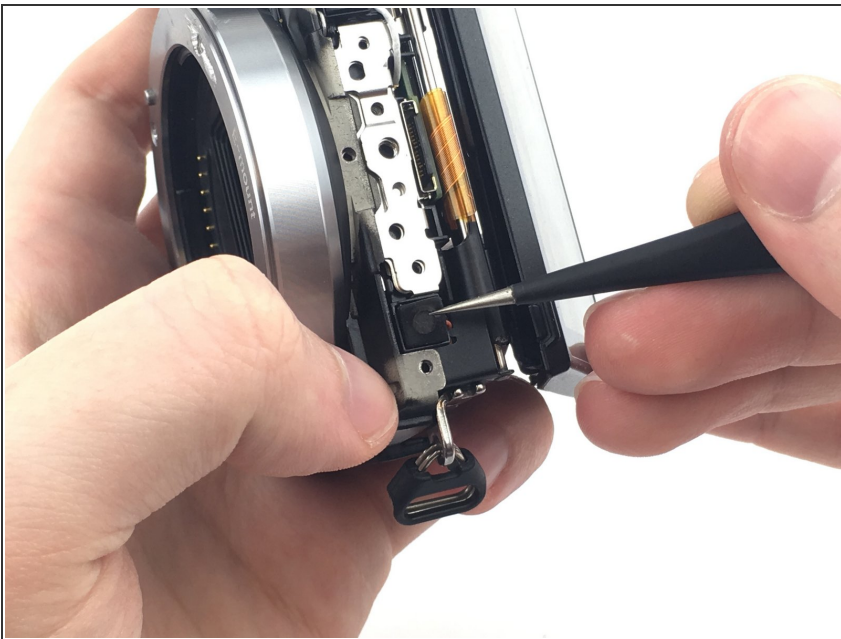
- Remove the 2.25 mm side lanyard mount screw.
- Pull the lanyard mount to remove.

Step 19



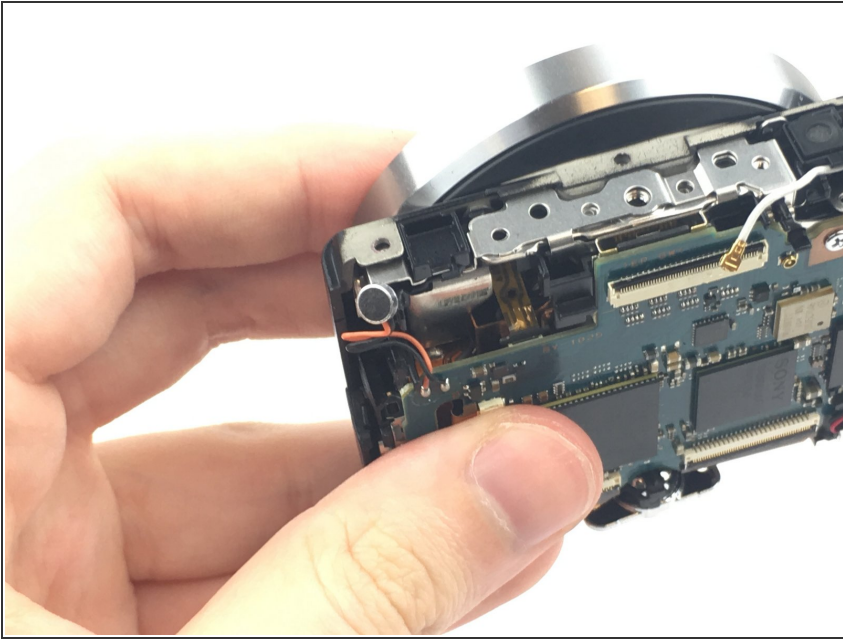
- Remove the 2.25 mm screws from the top.

Step 20



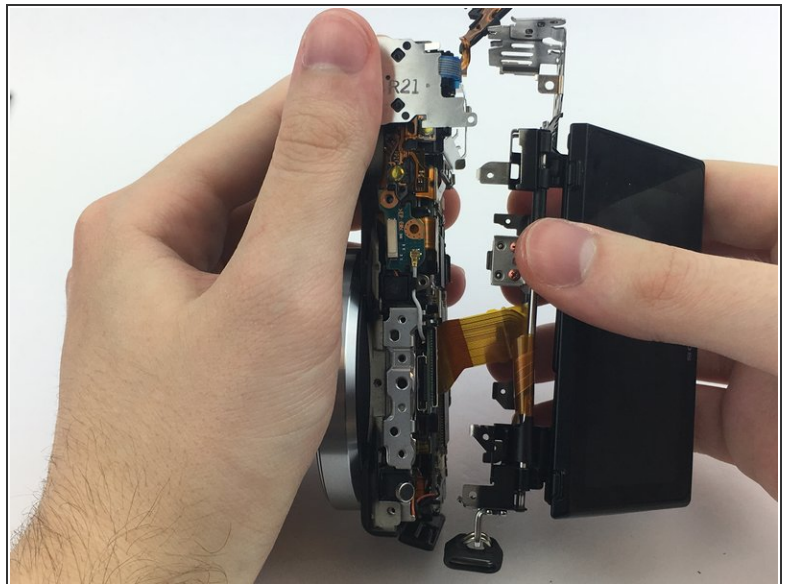
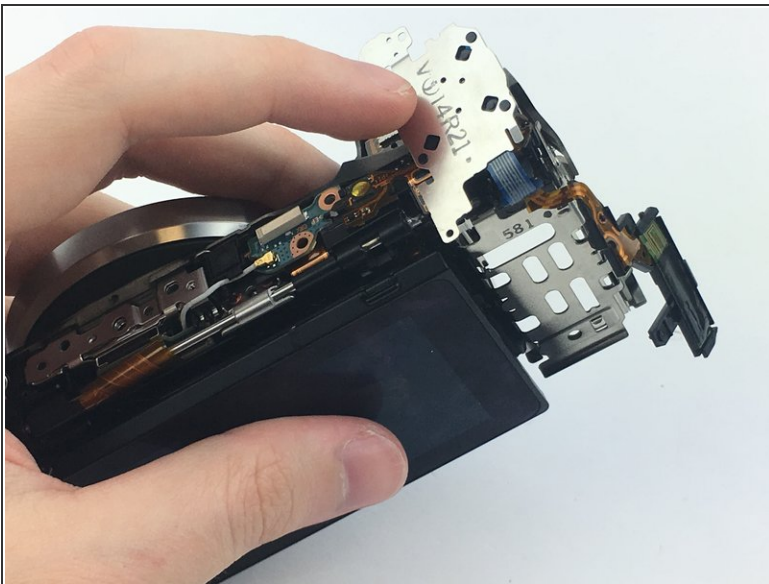
- Using the tweezers, pull out the rubber grommet.
- ⓘ There is nothing holding the grommet in other than friction.
- ⚠ The grommet is small, don't lose it.

Step 21



- Pull the lead that was under the grommet out from the frame.

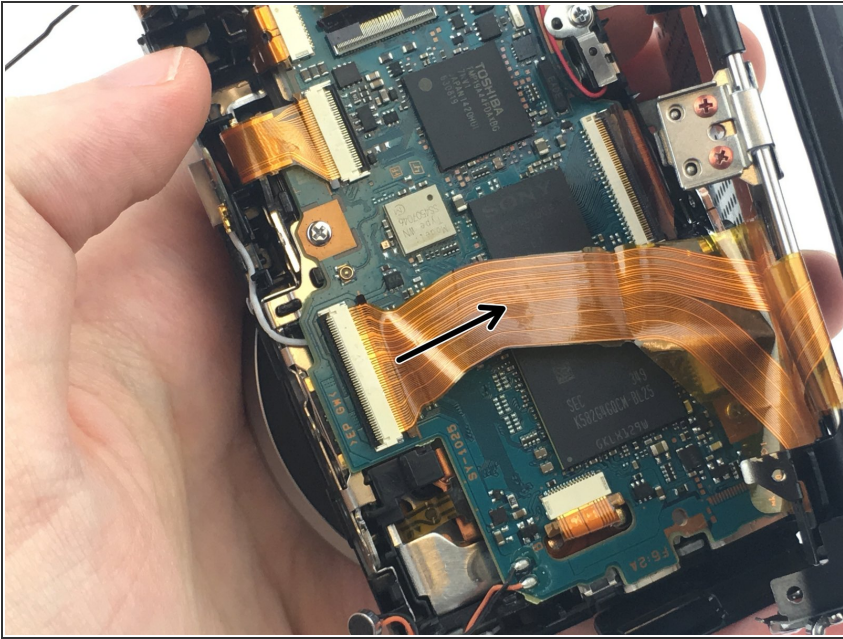
Step 22



- Flip the rotary selector and controls up over the top.
- Holding the controls in place, pull the two frame pieces apart.

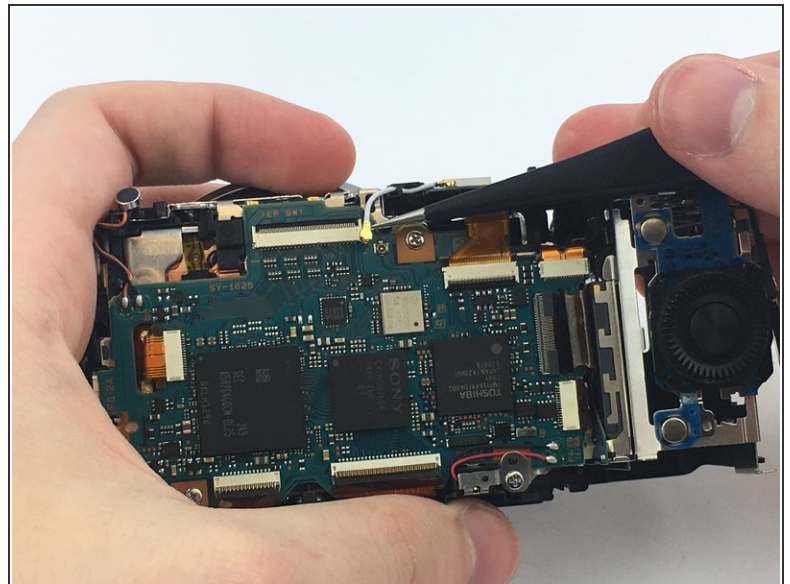
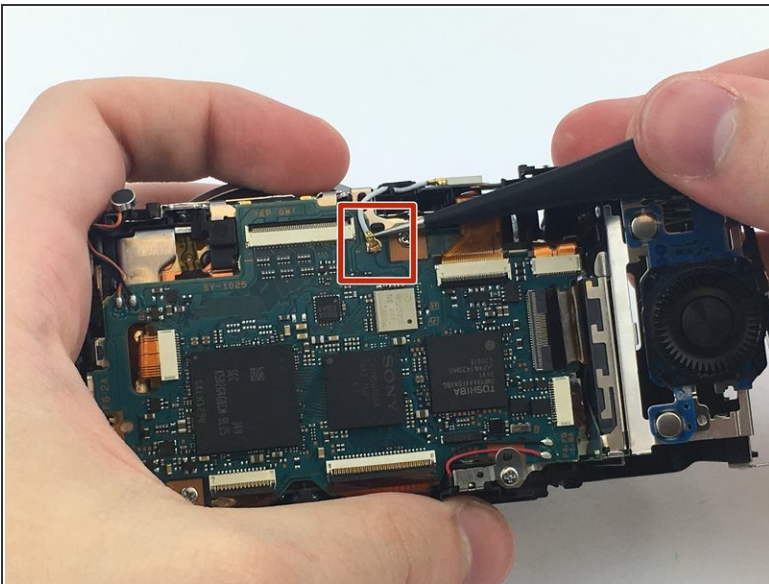
⚠ There is a connection between the motherboard and the LCD screen still attached to both halves, so don't pull too hard.

Step 23



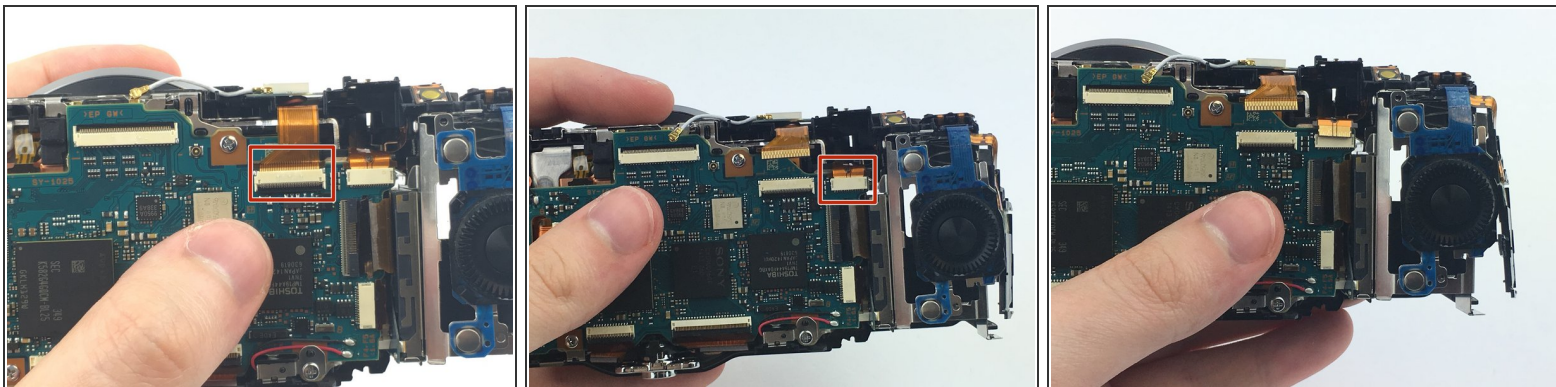
- Disconnect the connection between the motherboard and LCD screen by pulling out the connector in the direction of the arrow.

Step 24



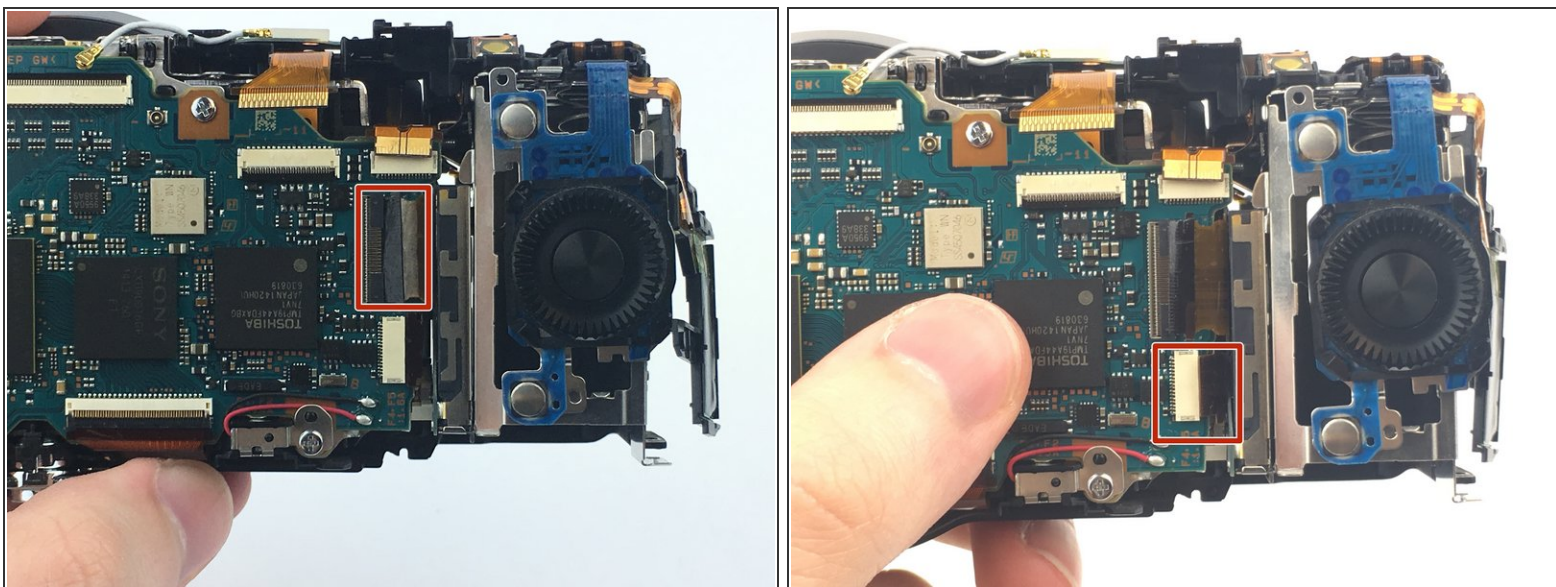
- Using the tweezers, disconnect the metal lead at the top of the motherboard by pulling up.

Step 25



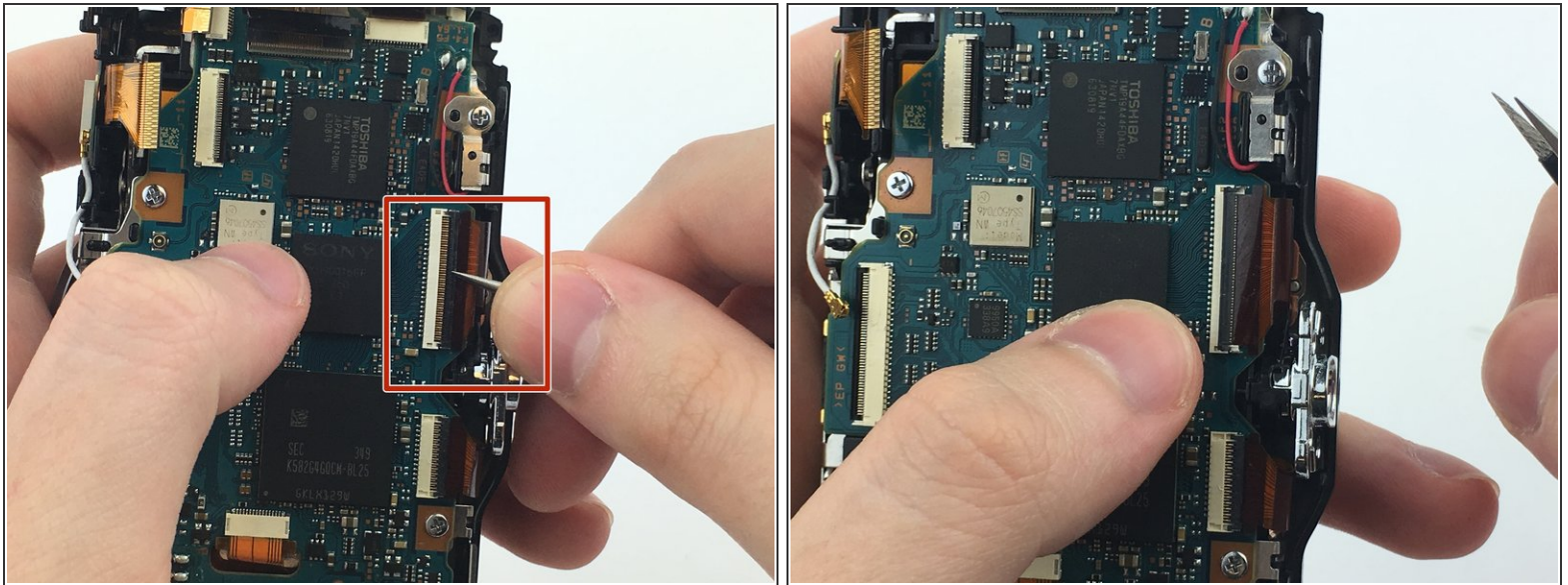
- Disconnect the two top-right connectors by pulling them up towards the top.

Step 26



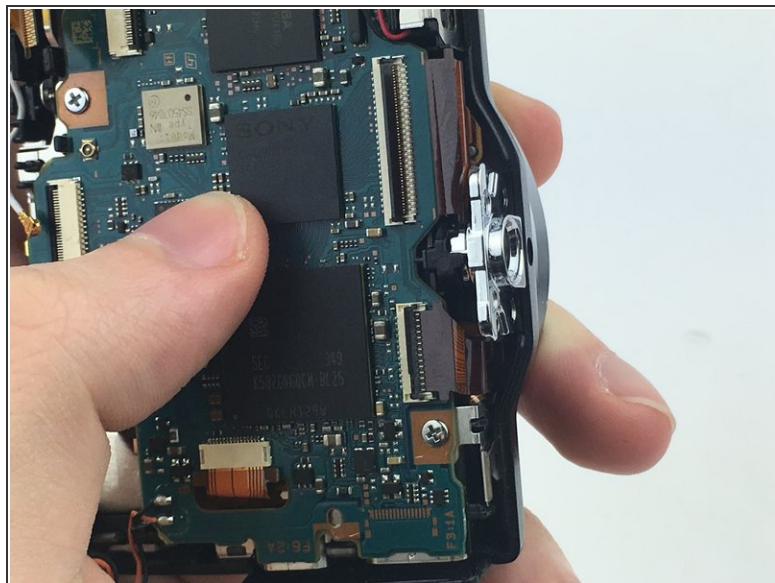
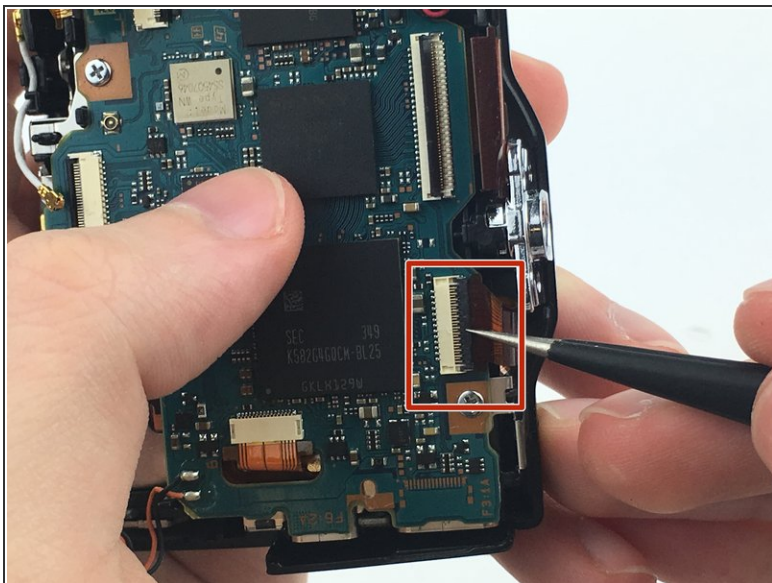
- Disconnect the two connectors on the right by pulling them to the right.

Step 27



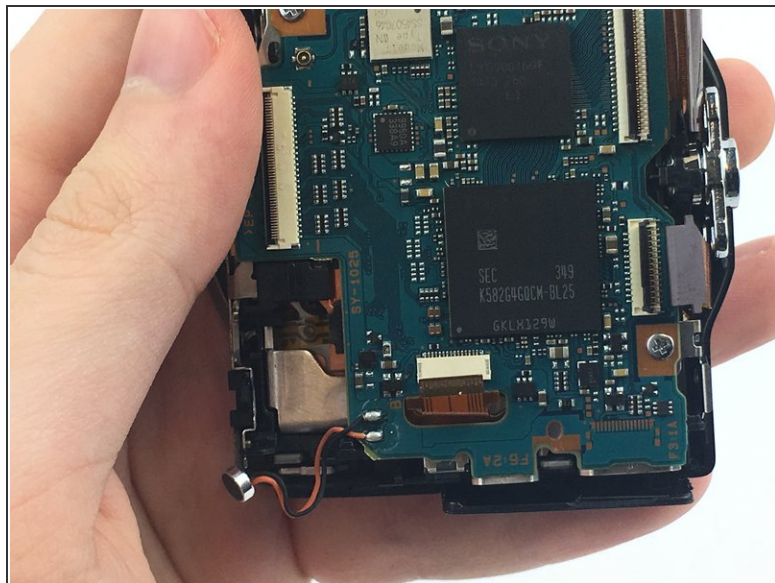
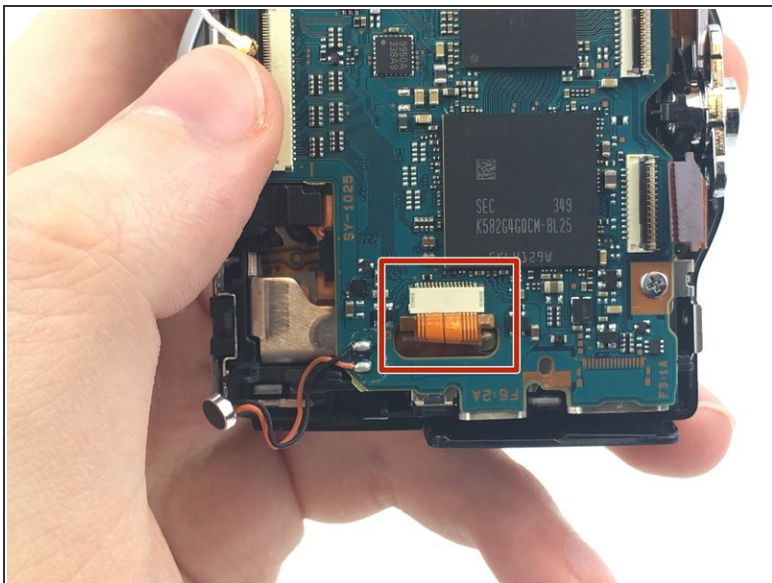
- Using the tweezers, flip open the black door on the large connector on the bottom.
- Remove the connector by pulling it away from the motherboard.

Step 28



- Using the tweezers, flip open the door on the smaller connector.
 - Remove the connector by pulling it away from the motherboard.
- i** This is the same process for from the previous step.

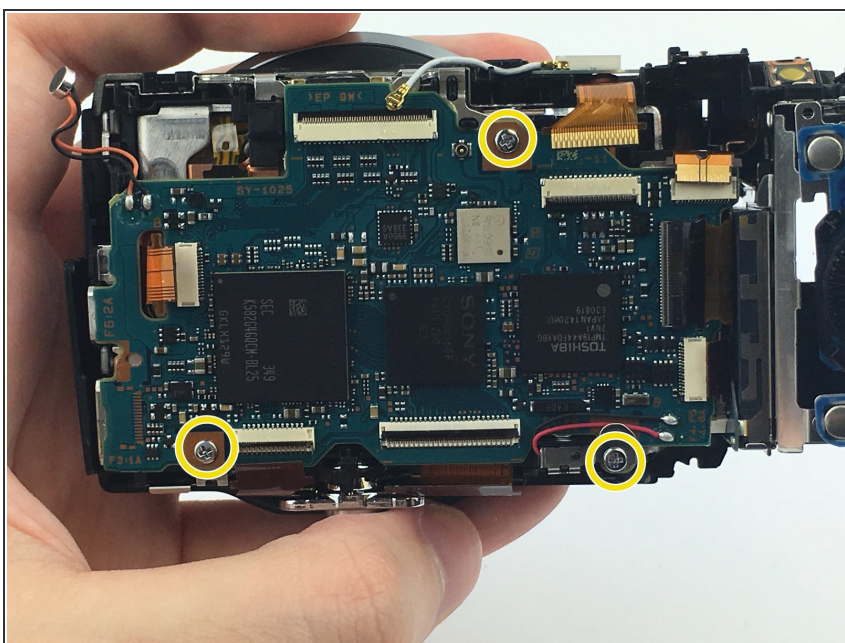
Step 29



- Disconnect the connector that goes through the motherboard.

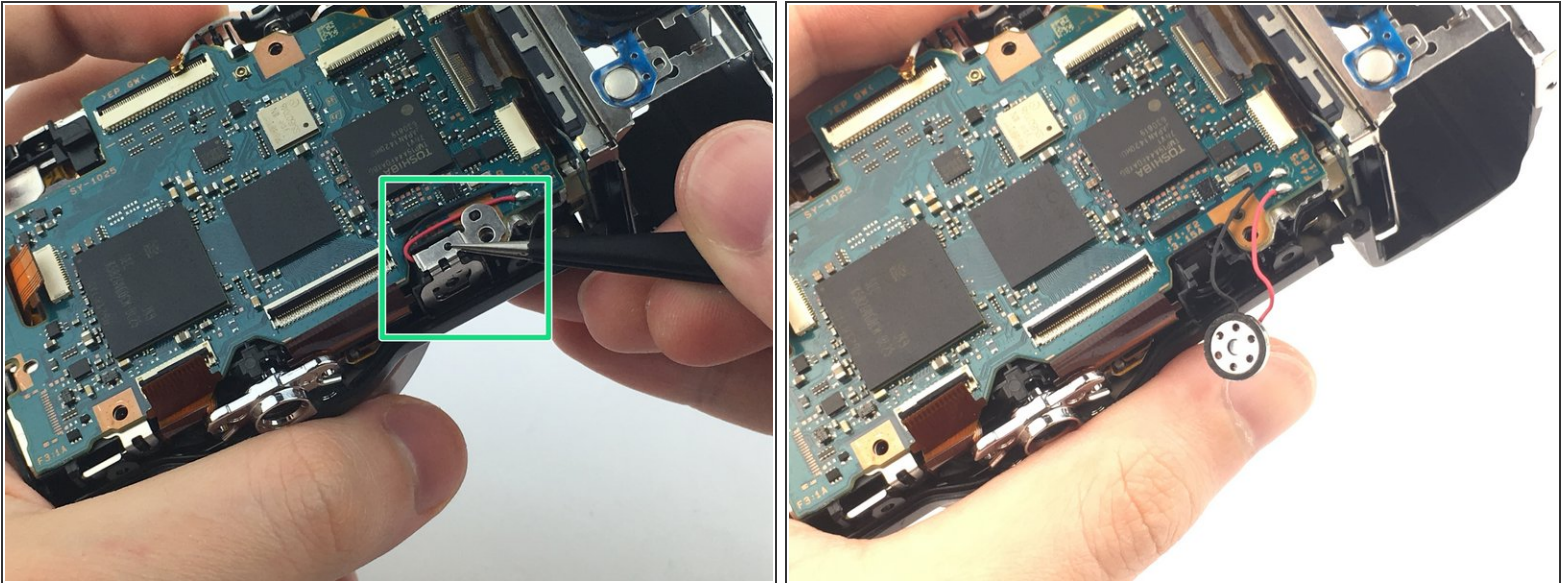
i There is no door on this connector.

Step 30



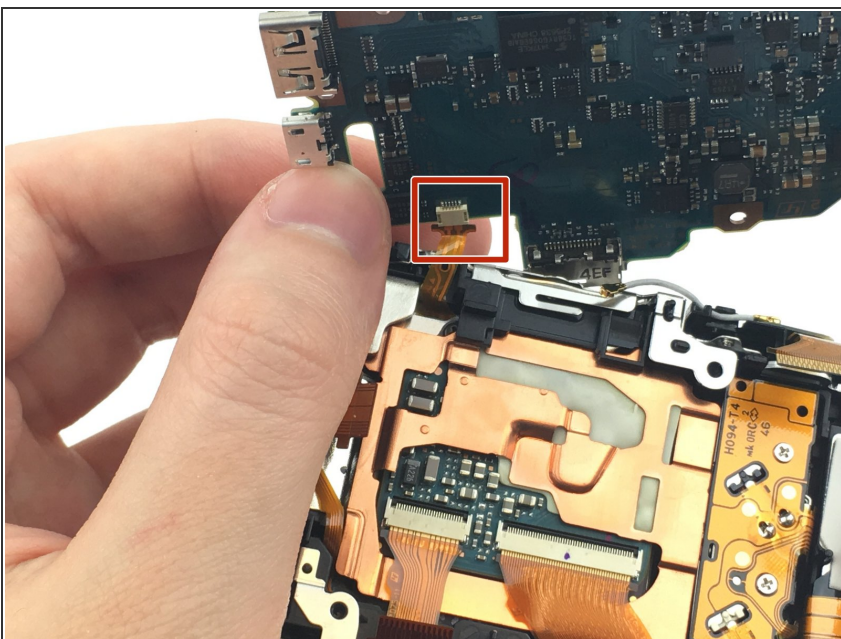
- Remove the 4 mm screws securing the motherboard to the frame.

Step 31



- With the tweezers, remove the metal speaker cover.
- Pull the speaker out of the frame.
- ⓘ Remember how the wires lay back in the frame for reassembly.

Step 32



- Flip the motherboard up and disconnect the connector on the back.
- Separate the motherboard from the frame.

To reassemble your device, follow these instructions in reverse order.