



Sony NEX-5T E-Mount Replacement

This guide will show how to disassemble and remove the Sony NEX-5T E-Mount, the part that joins the camera's body to the lens.

Written By: Chris Meseha



INTRODUCTION

The E-mount is a lens mount that joins the camera's body and the lens. Replacing a damaged or non-functioning E-mount requires removing the lens and the casing of the mount.

TOOLS:

- [Tweezers](#) (1)
 - [Phillips #0 Screwdriver](#) (1)
-


Step 1 — E-Mount





- Hold the camera with one hand and the lens in another.
- With the hand holding the camera, simultaneously push down on the lens release button while twisting the lens counterclockwise then pull to remove the lens.

Step 2



 You may need to apply adequate force to remove these screws and be careful not to strip them as they are relatively weak.

- Using a PH0 Philip's screwdriver, unscrew and remove the four 1.2mm Philip's screws on the front of the E-mount.
-  These screws are very small so make sure you do not misplace them.
-  If a screw is stripped, you will need to refer to the [ifixit stripped screw removal guide](#)

Step 3



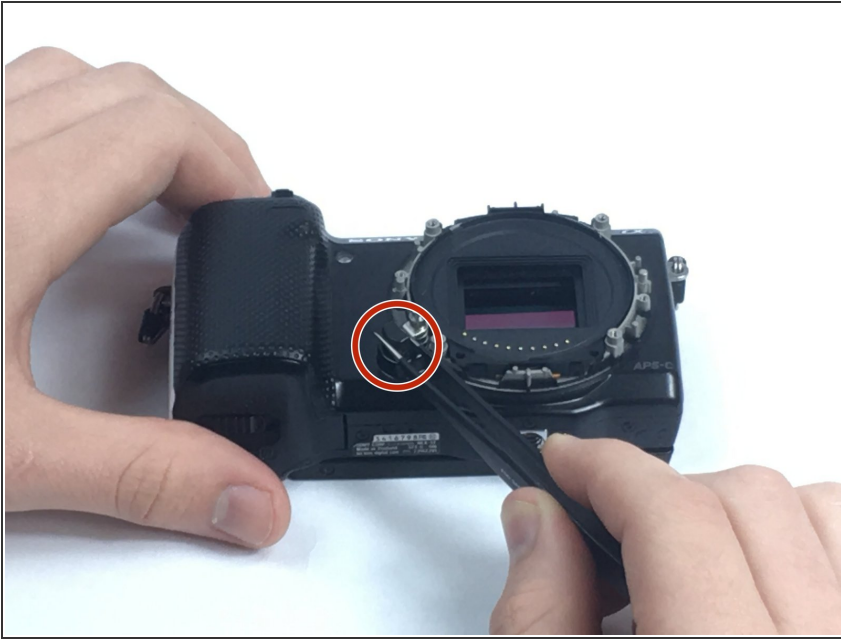
- Using your fingers, pull out and remove the top silver plate exposing a black spacer ring underneath.
 - Repeat the previous step for the black spacer plate exposing the second silver spacer ring.
 - Using your fingers or tweezers, pull out the second silver spacer ring.
- i** Note the positioning and order of each of the rings for reassembly.

Step 4



- Using a PH0 Philip's screwdriver, unscrew and remove the two 1.2mm Philip's screws located on opposite sides of the lens mount.
- Using your fingers, pull off the lens housing.

Step 5



- Using tweezers, remove the lens release button.
- ⓘ Because the small spring underneath is only held down by the button, removing the button will cause the spring to be loose. To avoid losing it, you may want to remove it as well.

To reassemble your device, follow these instructions in reverse order.