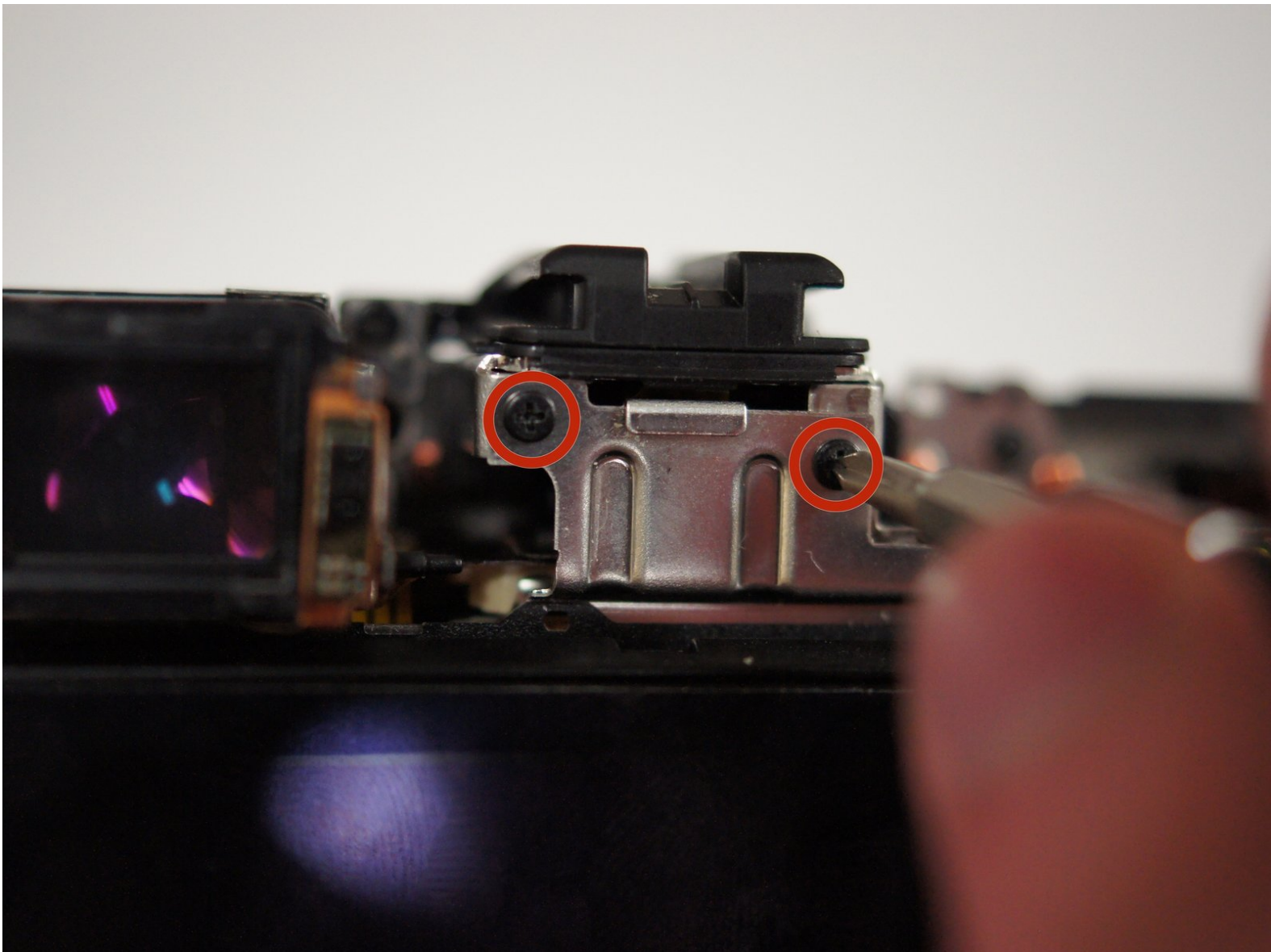




Sony NEX-7 LCD Assembly Replacement

This guide will remove the LCD assembly, allowing you to replace the viewfinder or screen.

Written By: Jay Miley

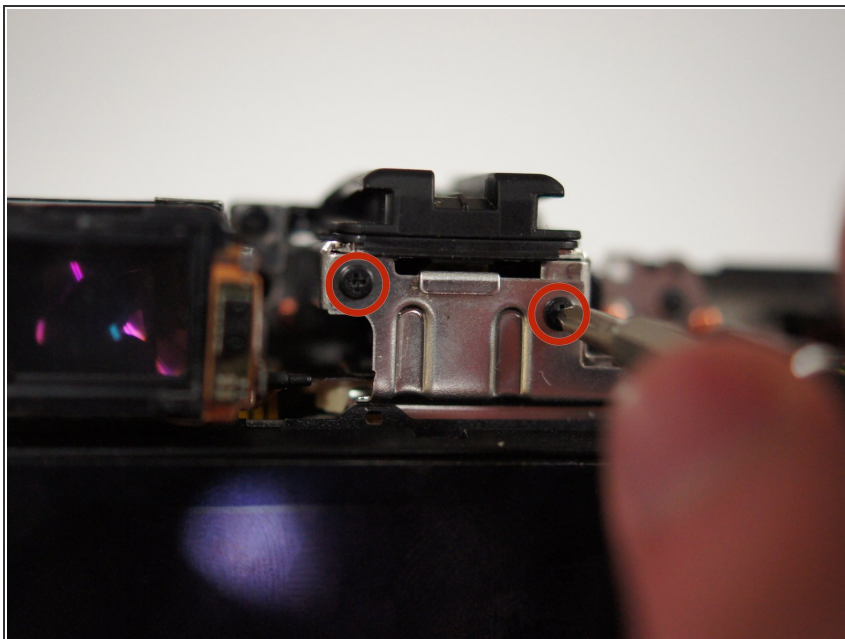




TOOLS:

- [Phillips #00 Screwdriver](#) (1)
 - [Tweezers](#) (1)
-

Step 1 — LCD Assembly



- Remove the two 3/32" #00 screws located next to the viewfinder using the Phillips #00 screwdriver.

Step 2



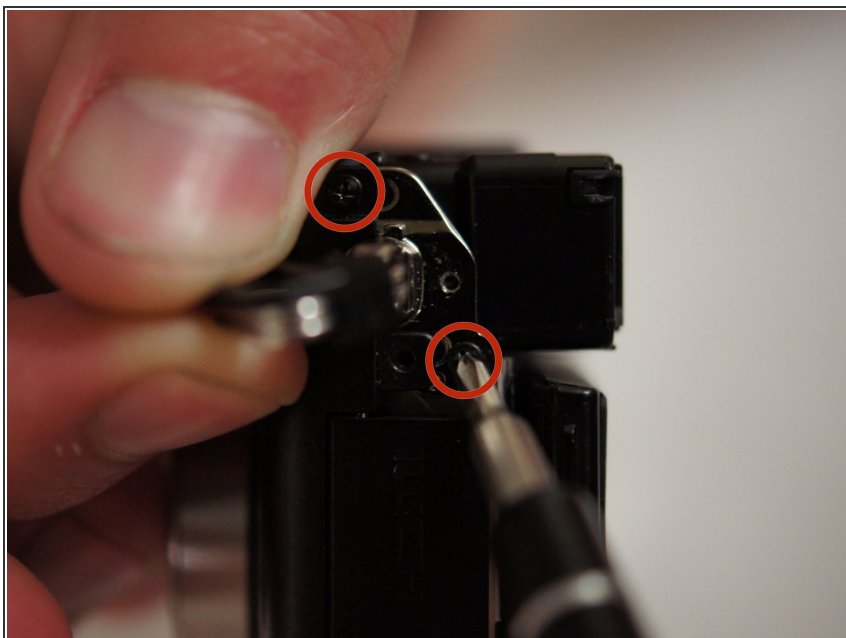
- Remove the two 5/32" #00 screws from the right side of the camera below the D ring using the Phillips #00 screwdriver.

Step 3



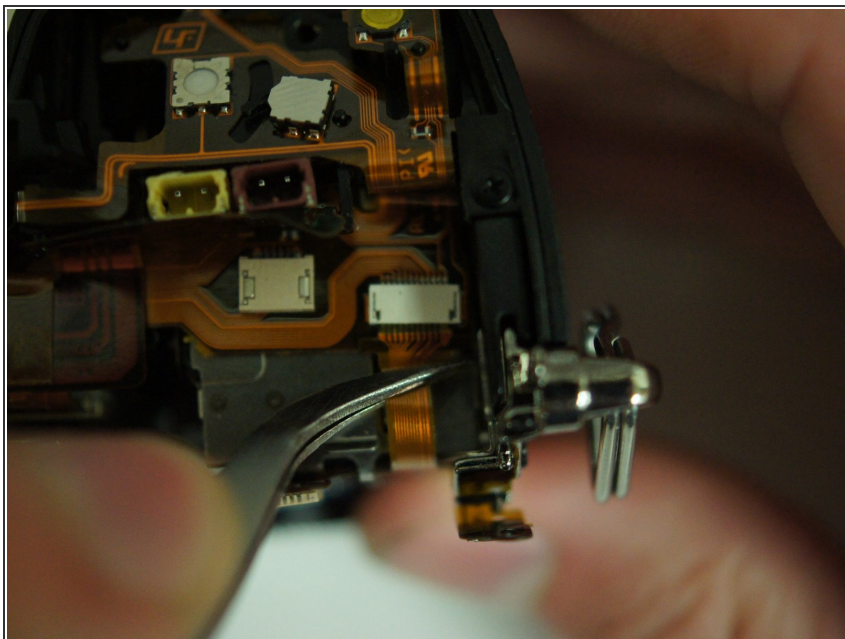
- Remove two more 3/32" #00 screws from the bottom of the camera using the Phillips #00 screwdriver.

Step 4



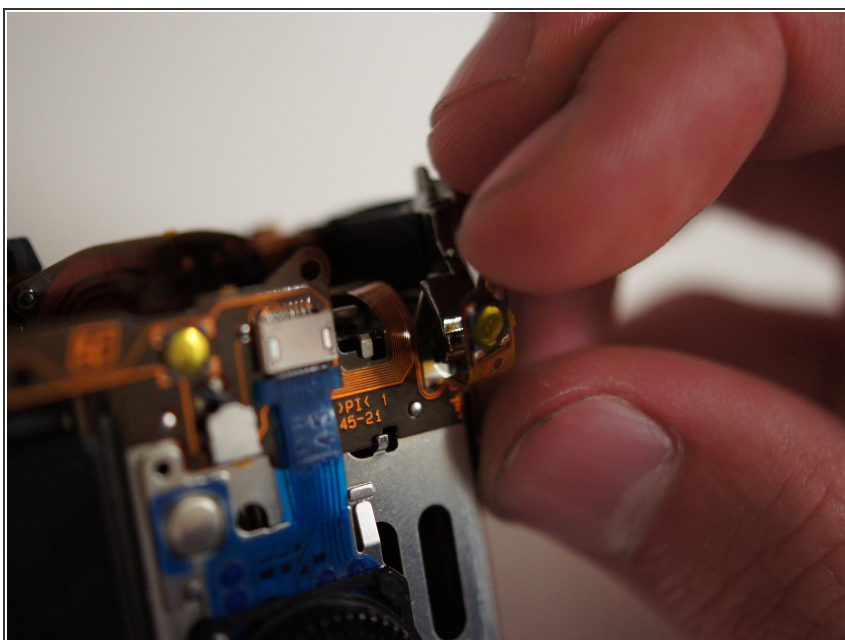
- Remove two more 3/32" #00 screws from the metal bracket on the left side of the camera using the Phillips #00 screwdriver.

Step 5



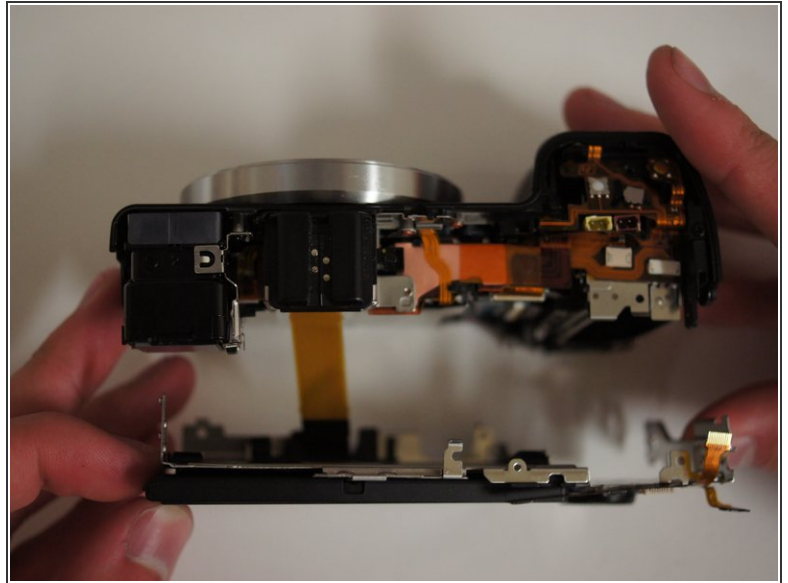
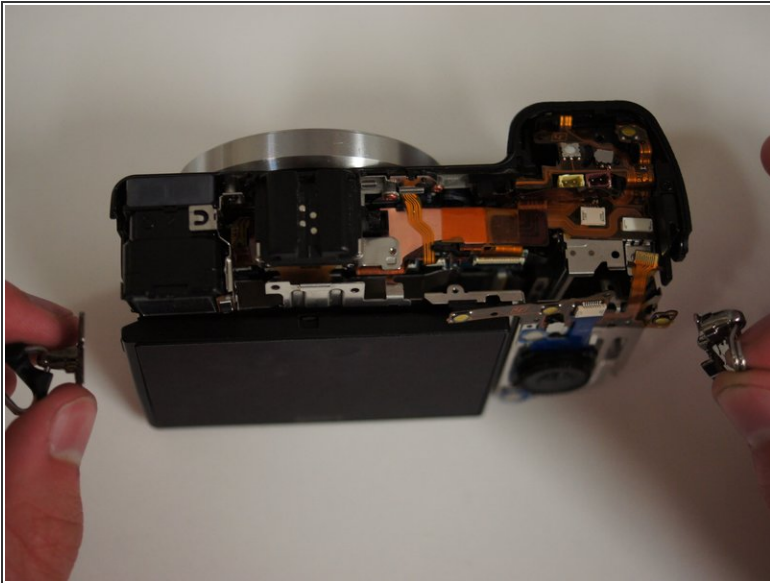
- Unplug the orange ribbon cable on the top right of the camera next to the metal bracket by applying tweezers to the tabs on either side of the plug.



Step 6



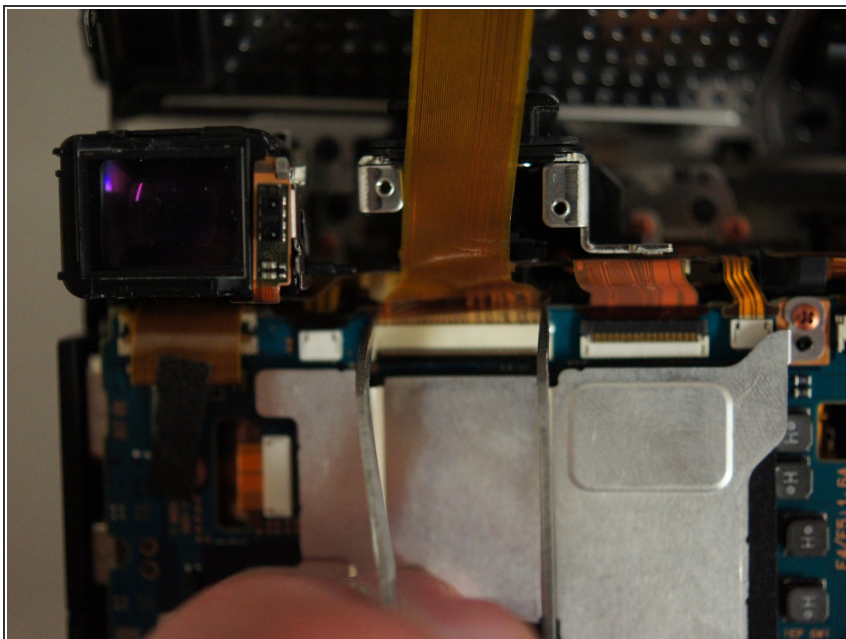
- Before pulling off the assembly, fold the rightmost tab of the flexible circuit board away from the metal bracket.

Step 7



-  The LCD assembly is attached with a concealed ribbon cable, so be gentle when you remove it.
-  The D ring brackets on either side are not attached, only held in mechanically. Once the LCD assembly starts to come out, they will detach.
 - Pull on the D rings on either side of the camera to start removing the assembly.
 - Once the brackets are cleared from black shell, take them off and set them aside.
 - Continue to remove the screen assembly.

Step 8



- With the camera face down, move the assembly away from you to get a clear view of the wide ribbon cable.
- Unplug the cable by applying tweezers to the tabs on either side of the plug.
- Set the LCD assembly aside.

To reassemble your device, follow these instructions in reverse order.