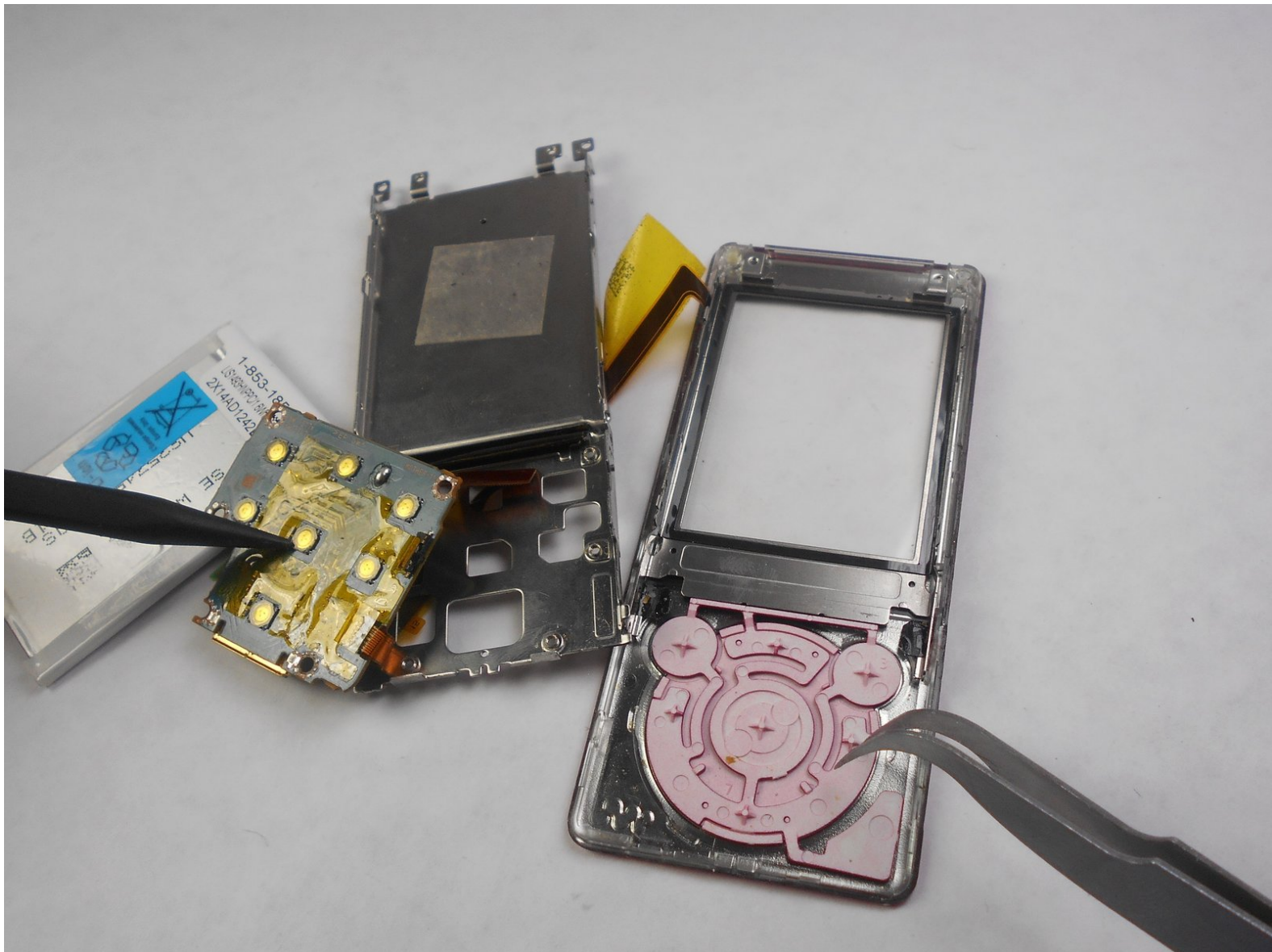




Sony NWZ-E473 Front Button Replacement

This is a guide which will show you how to replace the volume buttons.

Written By: Matthew Hintz



INTRODUCTION

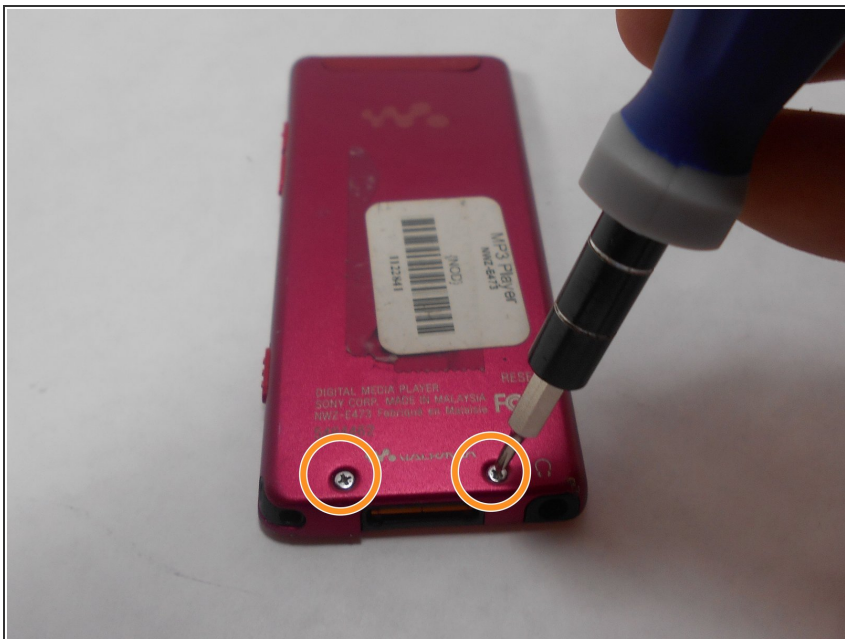
When completing this guide, remember the front buttons are flimsy so handle with care.



TOOLS:

- [Phillips #00 Screwdriver](#) (1)
 - [iFixit Opening Tools](#) (1)
 - [Spudger](#) (1)
 - [Tweezers](#) (1)
-

Step 1 — Back Panel



- Use a Phillips #00 screwdriver to unscrew the two 5 mm screws located on the bottom of the back of the device.

Step 2



- Use a plastic opening tool to loosen the bottom portion of device.

Step 3



- Use a plastic opening tool to loosen the top panel of the device.

Step 4



- Use a Phillips #00 screwdriver to remove the two 3 mm screws located on the portion under the top panel of the device.

Step 5



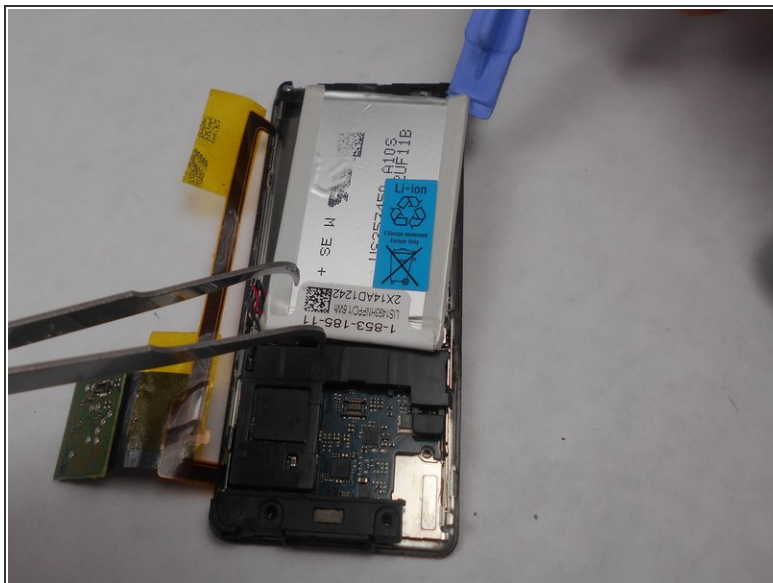
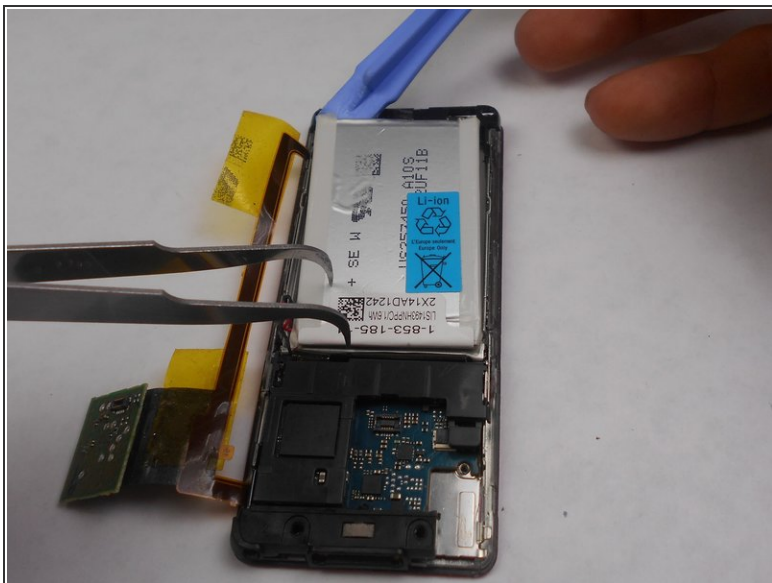
- Remove the back plate from the device.

Step 6 — Battery



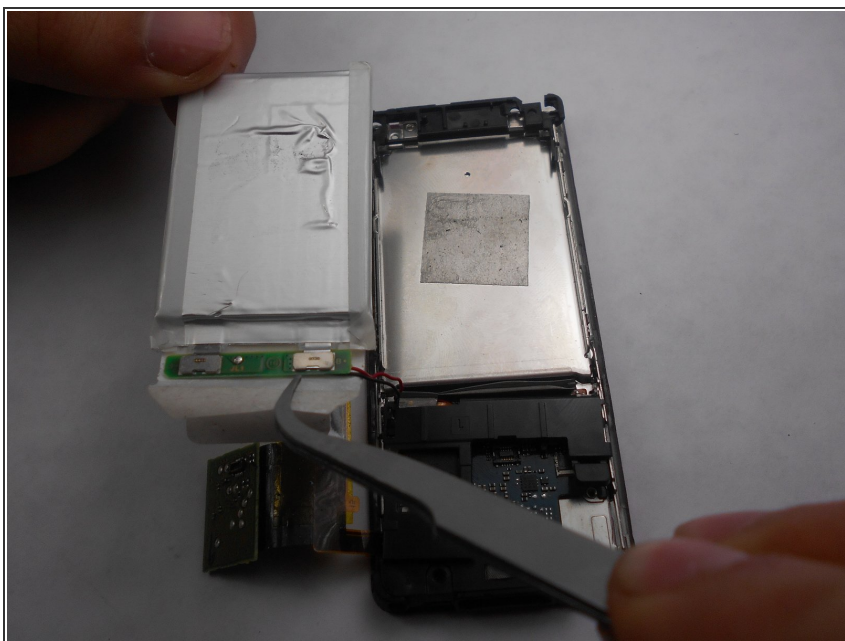
- Peel back the layer of tape along with the processor, which is located just below the battery, using the tweezers and the spudger.

Step 7



- Slide a prying tool underneath the top portion of the battery and lift it from the case.

Step 8



- Remove the stickers from the battery terminals, which are on the underside of the battery.

Step 9



- Use a soldering iron to remove the wires from the red and the black terminals.

Step 10 — Screen



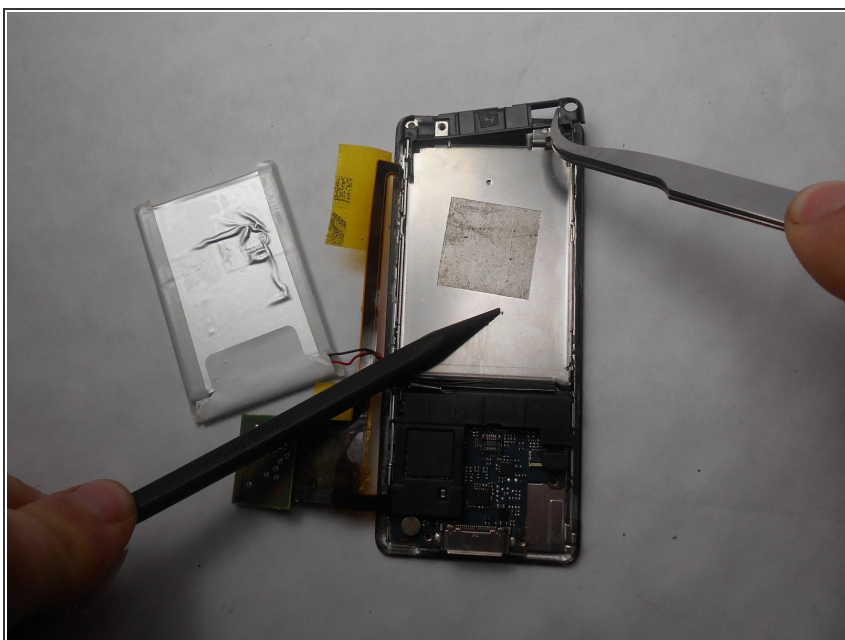
- Use a nylon spudger or tweezers to remove the plastic USB cover.

Step 11



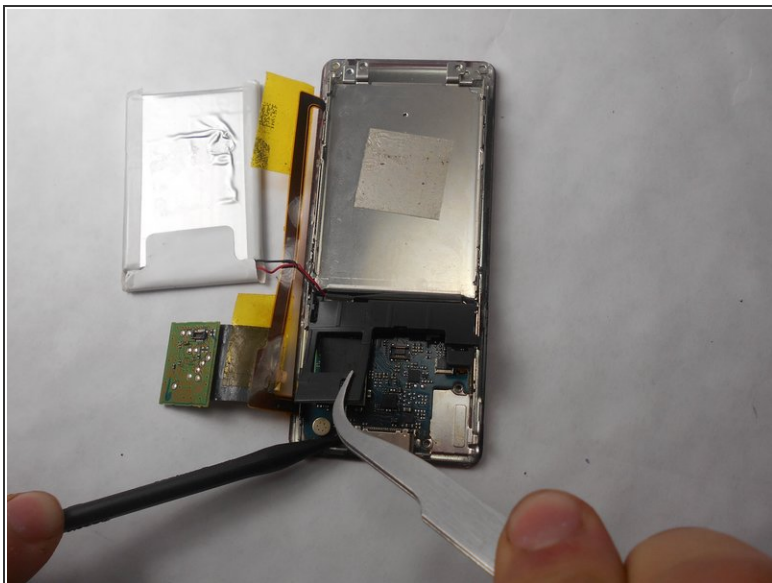
- Use a Phillips #00 screwdriver to unscrew two 2 mm screws located on the top corners of the device.

Step 12



- Use a nylon spudger or tweezers to remove the plastic protective plate at the top of device.

Step 13



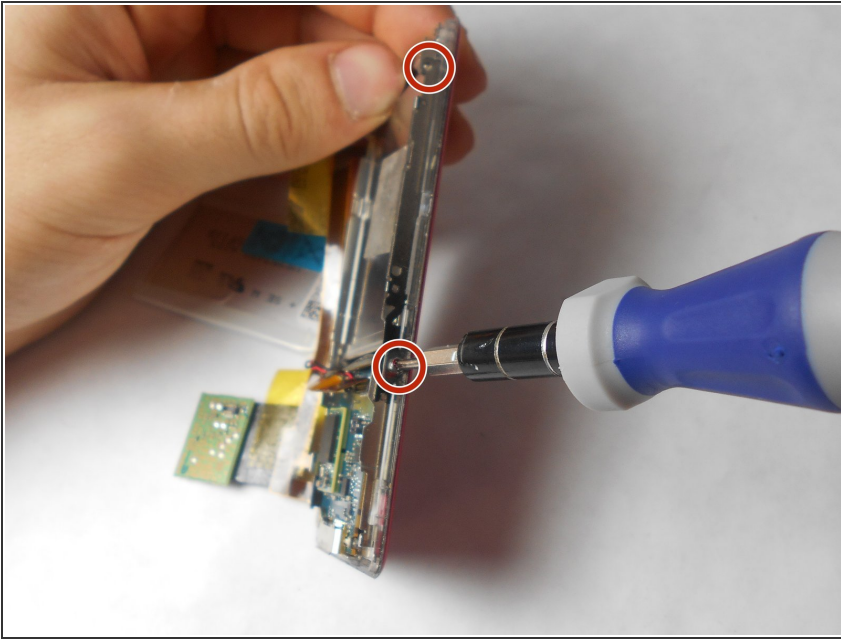
- Remove the plastic protective frame located over the motherboard with tweezers and a spudger.

Step 14



- Remove screen connection from motherboard using tweezers and spudger.

Step 15



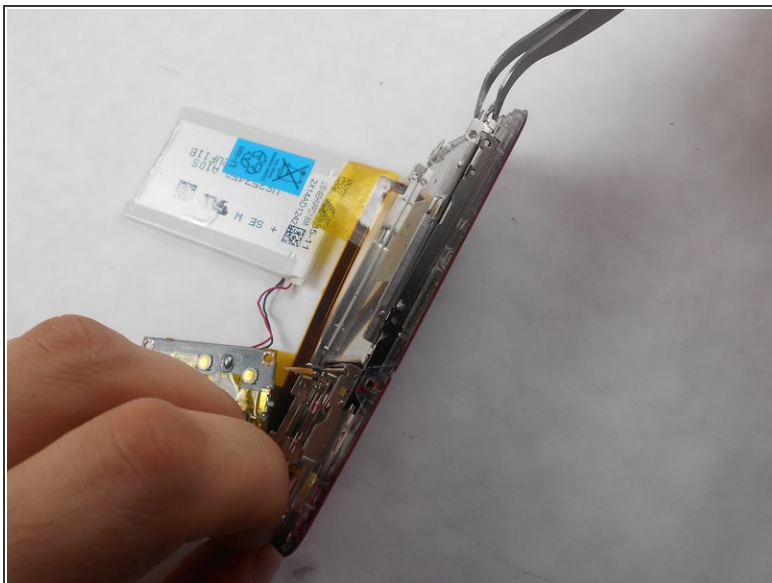
- Use a Phillips #00 screwdriver to remove two 3 mm screws at the bottom sides and two 1 mm screws at top sides of the device.

Step 16



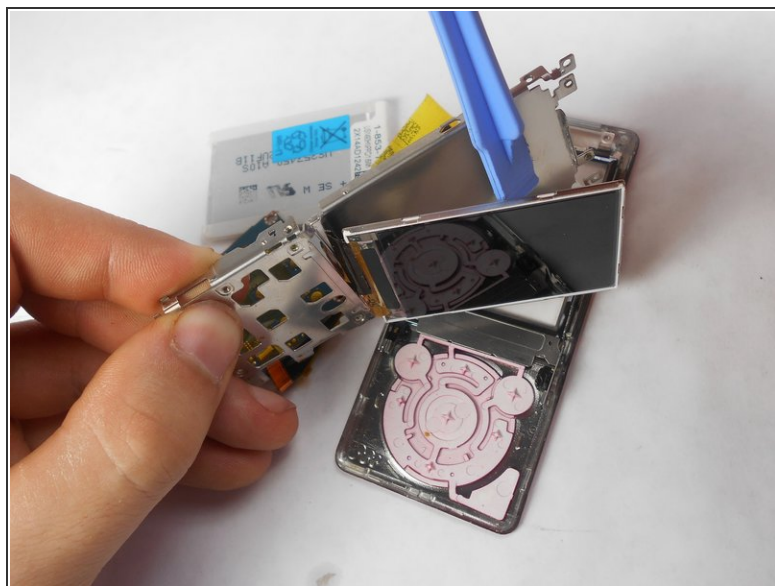
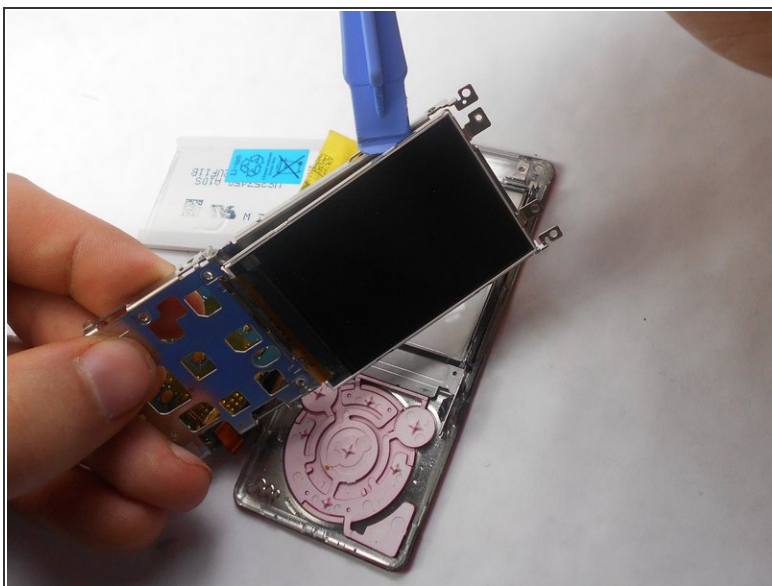
- Use a Phillips #00 screwdriver to unscrew two 2 mm screws, and remove the motherboard from the device with tweezers and a plastic opening tool.

Step 17



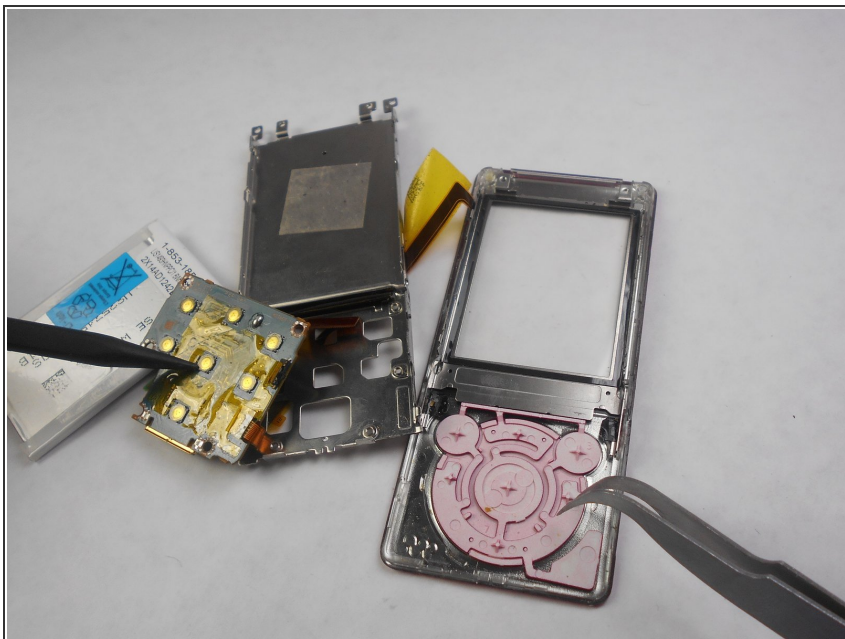
- Disconnect the metal shielding plate from the front panel with tweezers or a plastic opening tool.

Step 18



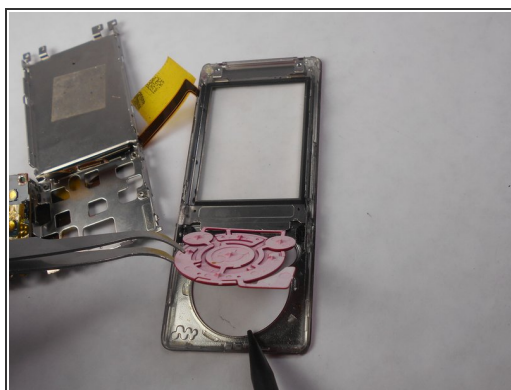
- Use a plastic opening tool to remove the screen from metal back plate.

Step 19 — Front Button



- Ensure that button connection is completely separated from the buttons.

Step 20



- Remove buttons from front display panel by pushing button display from the front of the device

To reassemble your device, follow these instructions in reverse order.