



Sony PS1100 Needle Cartridge Replacement

This guide will show you the steps to replacing the needle on a Sony PS1100 Record Player. This should only be replaced with a Sony VL-30G Needle Cartridge.

Written By: Lucas Cisneros

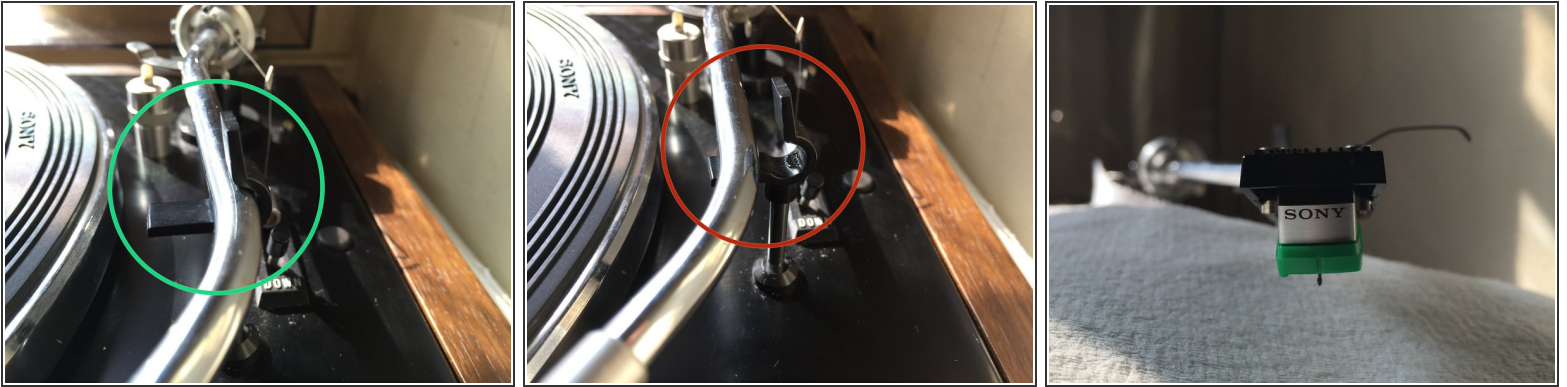


INTRODUCTION


In this guide you will learn how to replace a broken or old needle on a Sony PS1100. The green needle cartridge is one solid component, that must be replaced together. The needle cannot simply be replaced by itself. The Sony VL-30G is the proper cartridge for the PS1100 Record player, and can be found in most record shops.

For More Troubleshooting click the link: [Sony PS1100 Troubleshooting](#)

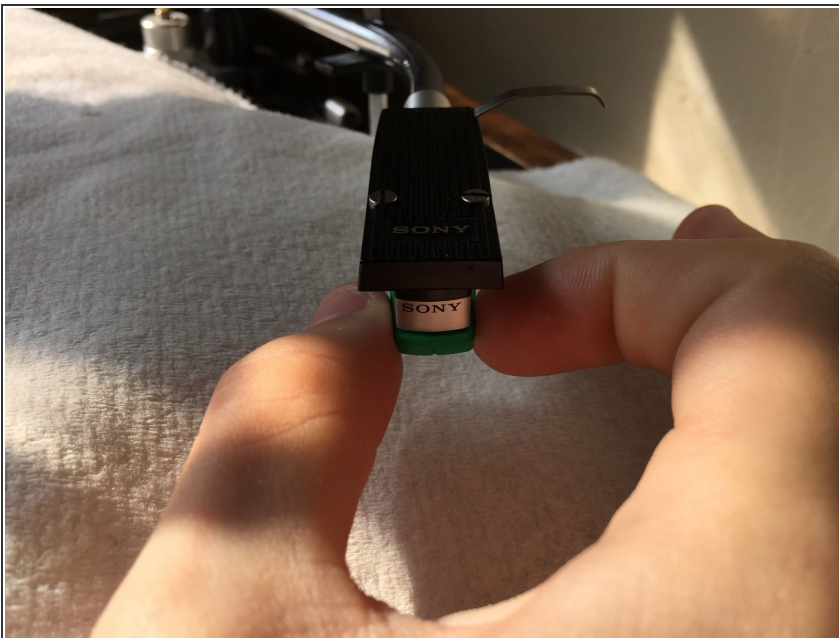
Step 1 — Remove the existing Cartridge from the player



- Place the Arm of the record player into the latch to ensure that it does not move during the needle replacement.

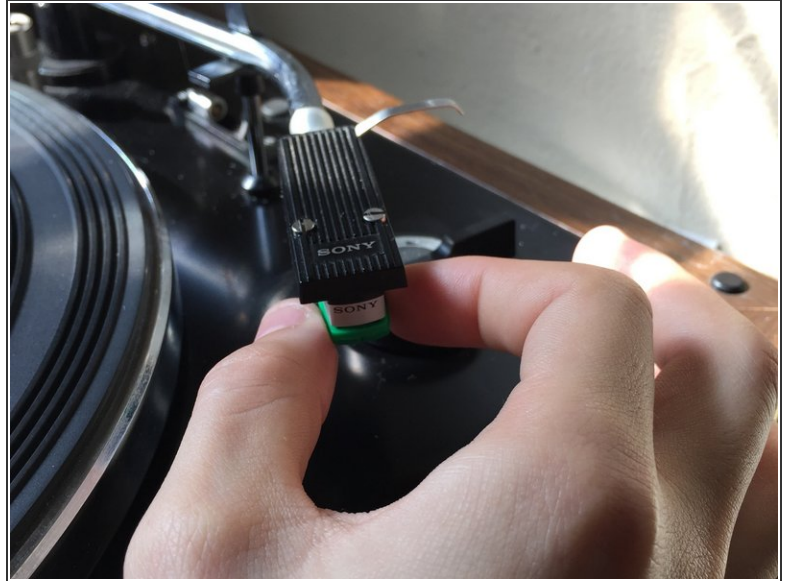
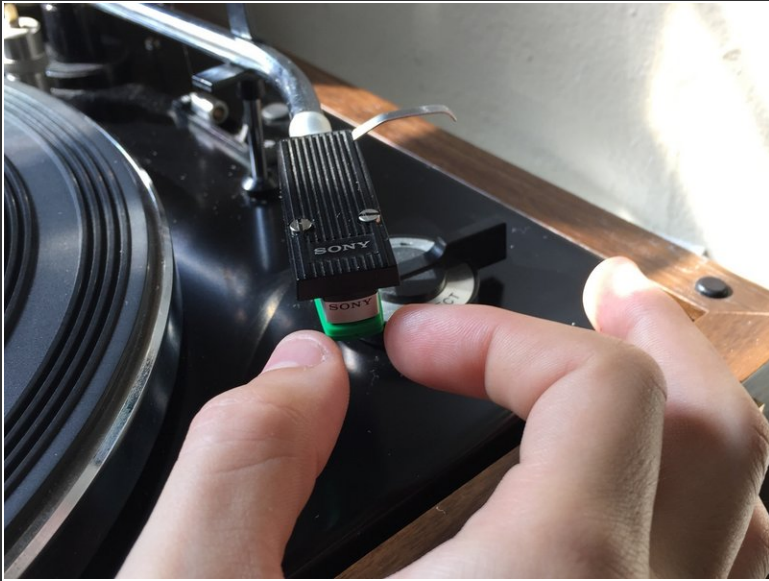
 The arm must be fully locked into place

Step 2 — Remove the existing Cartridge



- Firmly grip both sides of the cartridge with your thumb and index fingers.
- CAREFULLY pull the entire cartridge so that it slides out towards the front of the arm holding the needle.

Step 3 — Insert new needle cartridge



- Using the New cartridge (Sony VL-30G) gently slide into the arm of the record player. It will click into place when inserted properly.

⚠ Be careful not to touch the needle when inserting the cartridge or else you risk breaking the new one.

Step 4 — Test the new needle Cartridge



- ⓘ Once the needle clicks into place, test the record player to ensure that the needle works properly.

To reassemble your device, follow these instructions in reverse order.