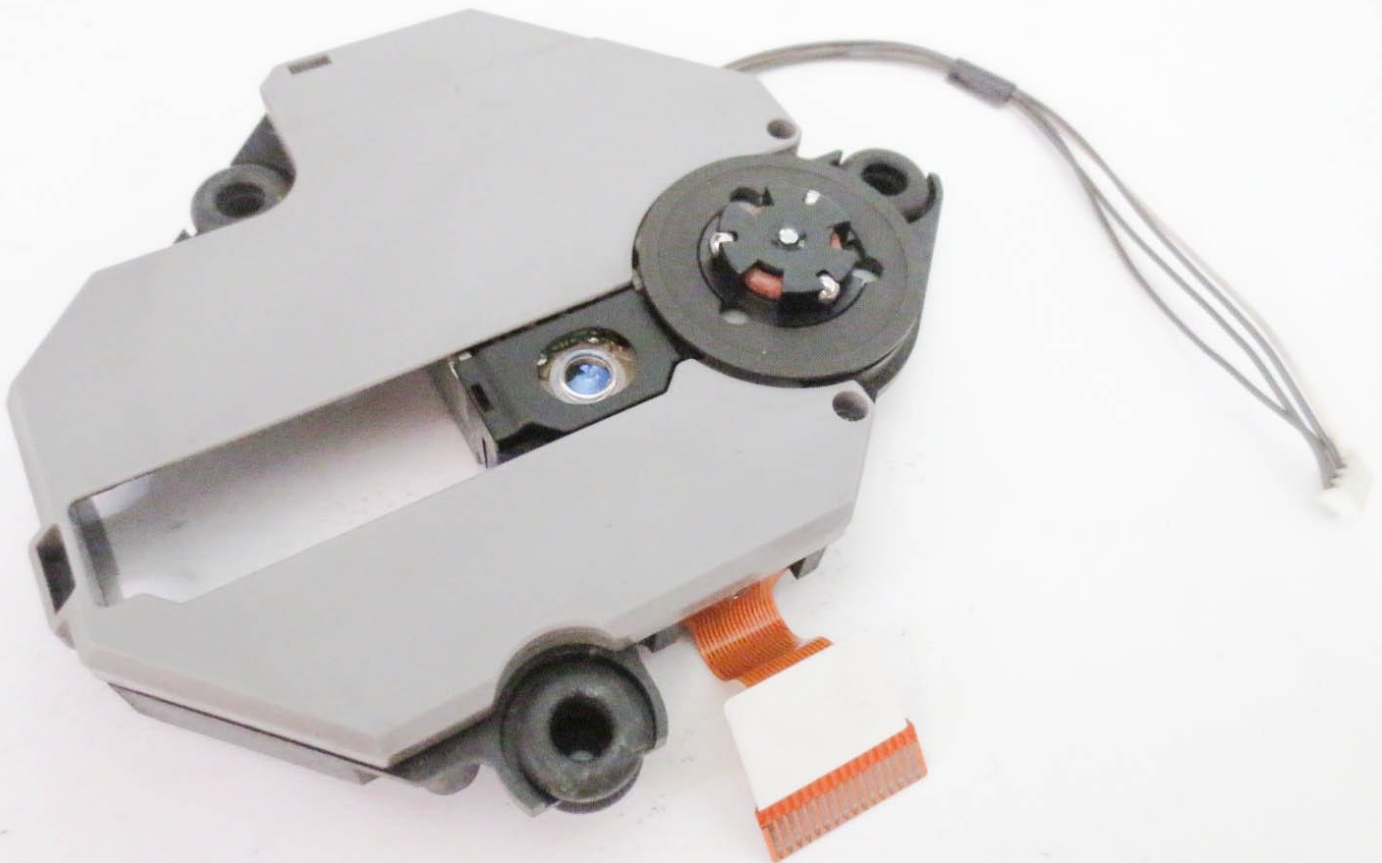




# Sony PSone Laser Assembly Replacement

This guide will assist you in the replacement of your PSone's laser assembly.

Written By: trickster





## TOOLS:

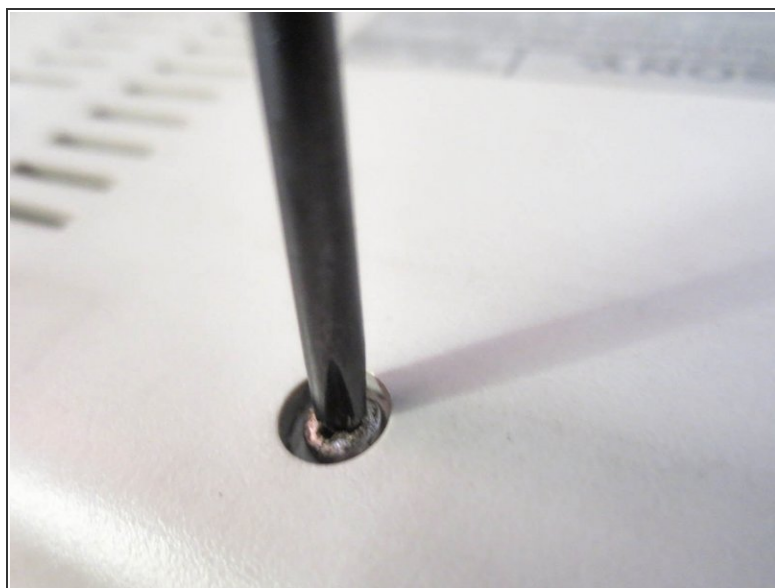
- [Phillips #1 Screwdriver](#) (1)
-

## Step 1 — Upper Case



- Remove all cables plugged into the PlayStation.

## Step 2



- Flip over the PlayStation and remove the six screws from the bottom.

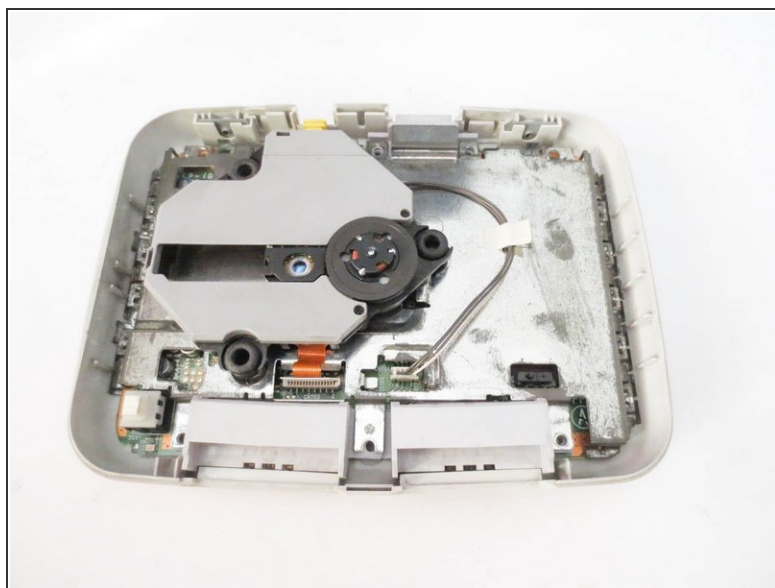
## Step 3



- Flip the PlayStation back.

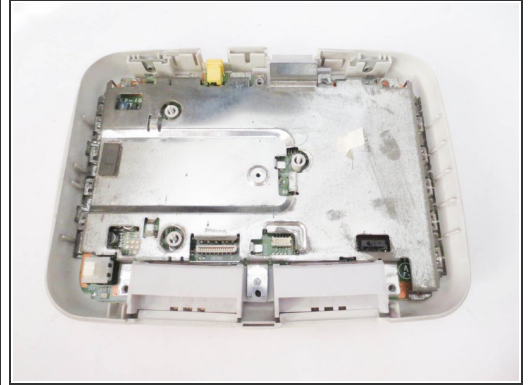
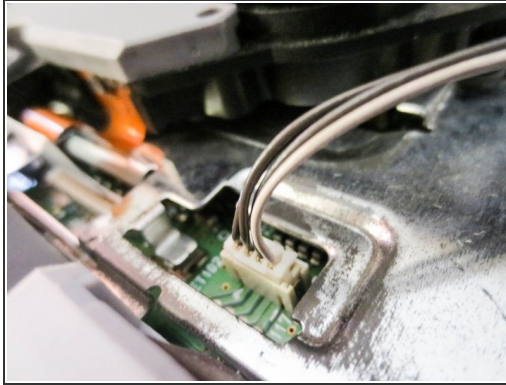
⚠ There are no screws holding EVERYTHING inside the PlayStation so better hold it like a burger while flipping.

## Step 4




- Lift up and remove the upper case.

## Step 5 — Laser Assembly



- Disconnect the cables from the PSone's board.

 Take extreme care when disconnecting the ribbon cable from motherboard. You risk damaging the cable if you're not careful.

To reassemble your device, follow these instructions in reverse order.