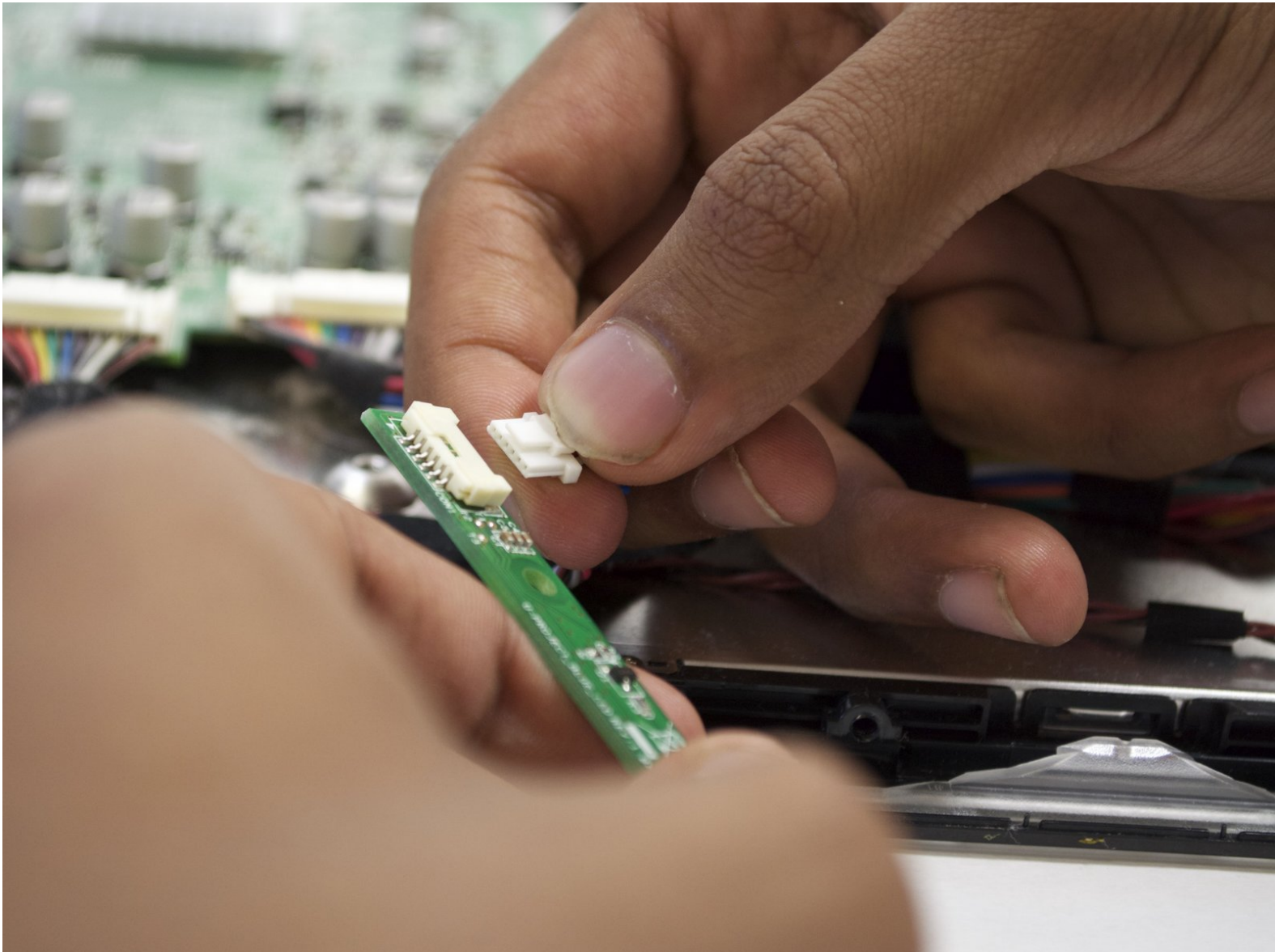




# Sony PlayStation 3D Display Indicator Light Bar Replacement

This guide will show you how to replace the indicator light bar.

Written By: Kyle Franck



# INTRODUCTION

This repair may be needed if your device functions properly, but the indicator lights do not work.



## TOOLS:

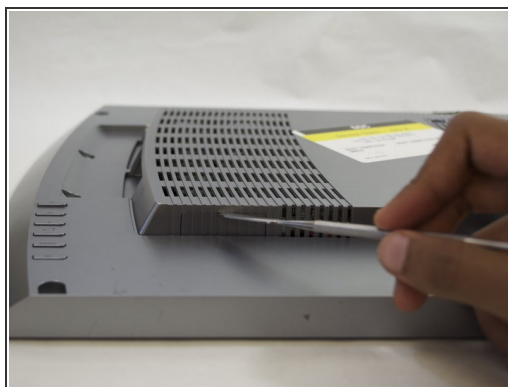
- [Metal Spudger](#) (1)
  - [Phillips #2 Screwdriver](#) (1)
  - [iFixit Opening Tools](#) (1)
-

## Step 1 — Rear Case



- Remove the base by pushing in the button and sliding out the unit.

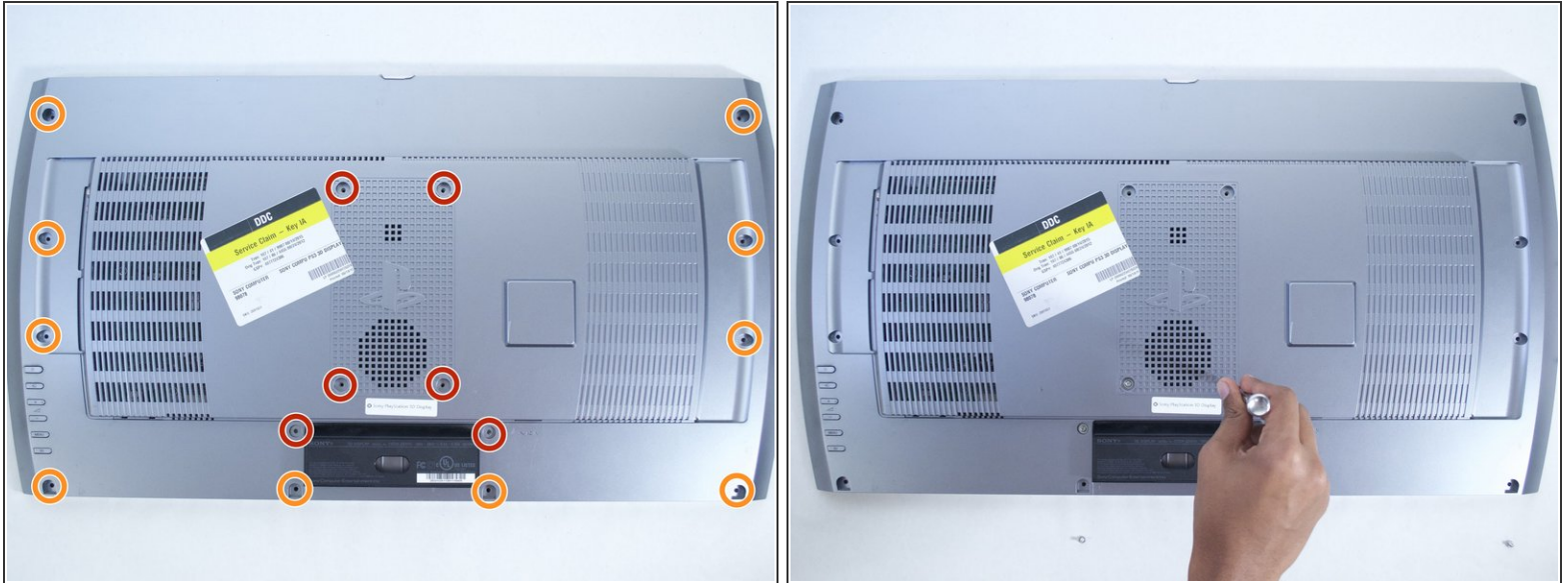
## Step 2



- Remove USB port cover from back plate with a metal spudger.
- ⓘ This will prevent the cover from falling under the back plate once it is removed.

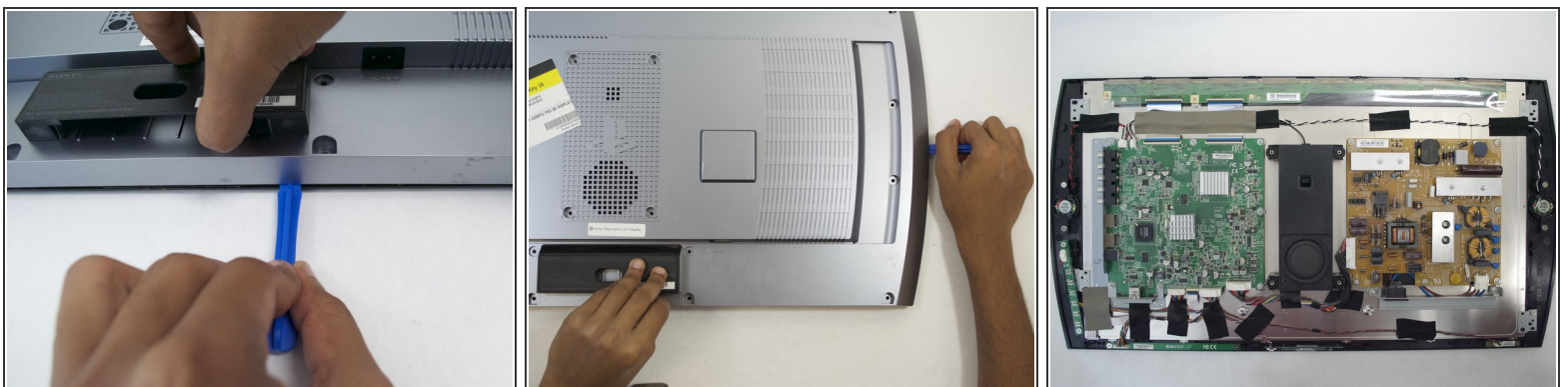


### Step 3



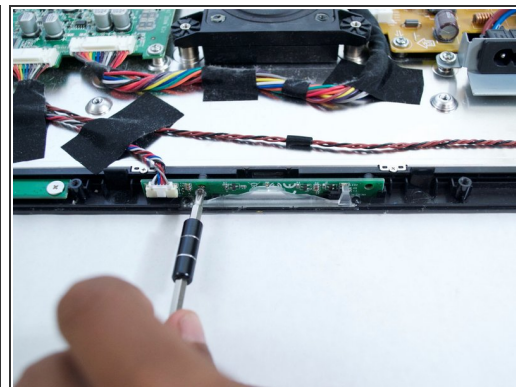
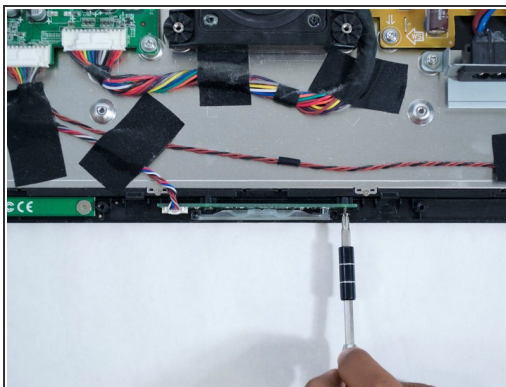
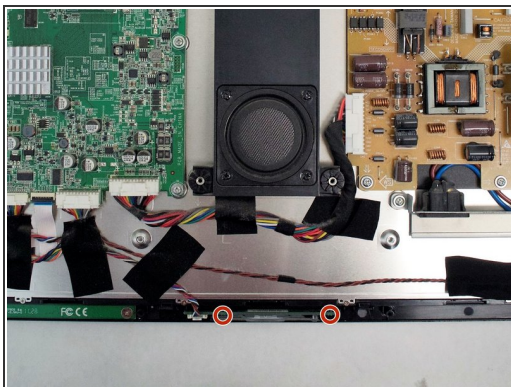
- With the Phillips #02 screwdriver, remove the six 6 mm length x 6 mm head screws from the back plate.
- With the Phillips #02 screwdriver, remove the ten 6 mm length x 8 mm head screws from the back plate.
- ⓘ These screws have different threads and need to be kept separate.

### Step 4



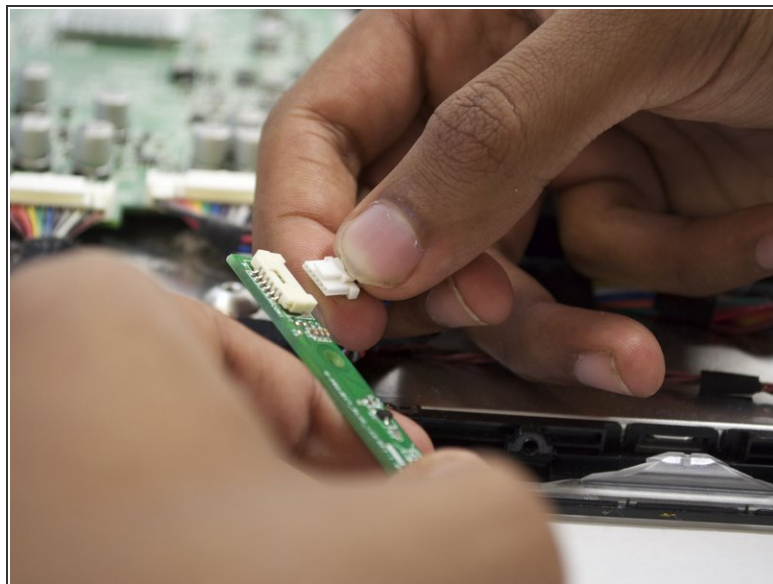
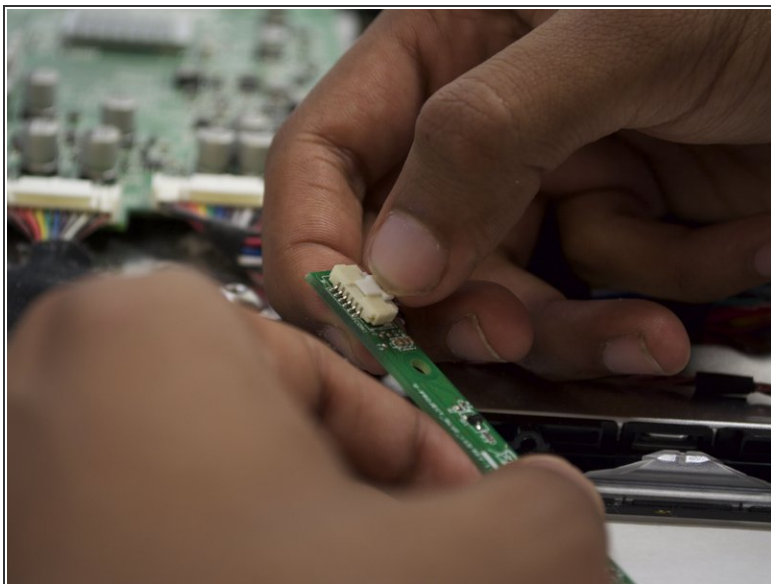
- Remove back plate with a plastic opening tool by slowly prying around the entire plate.
- ⚠ Be gentle to avoid breaking the plastic clips which hold the plate.
- Once separated the plate easily lifts off.

## Step 5 — Indicator Light Bar



- With the Phillips #02 screwdriver, remove the two 5mm length x 5mm head screws located on the left and right side of the light bar board.

## Step 6



- Remove the light bar by depressing the tab on the white data connector.

To reassemble your device, follow these instructions in reverse order.