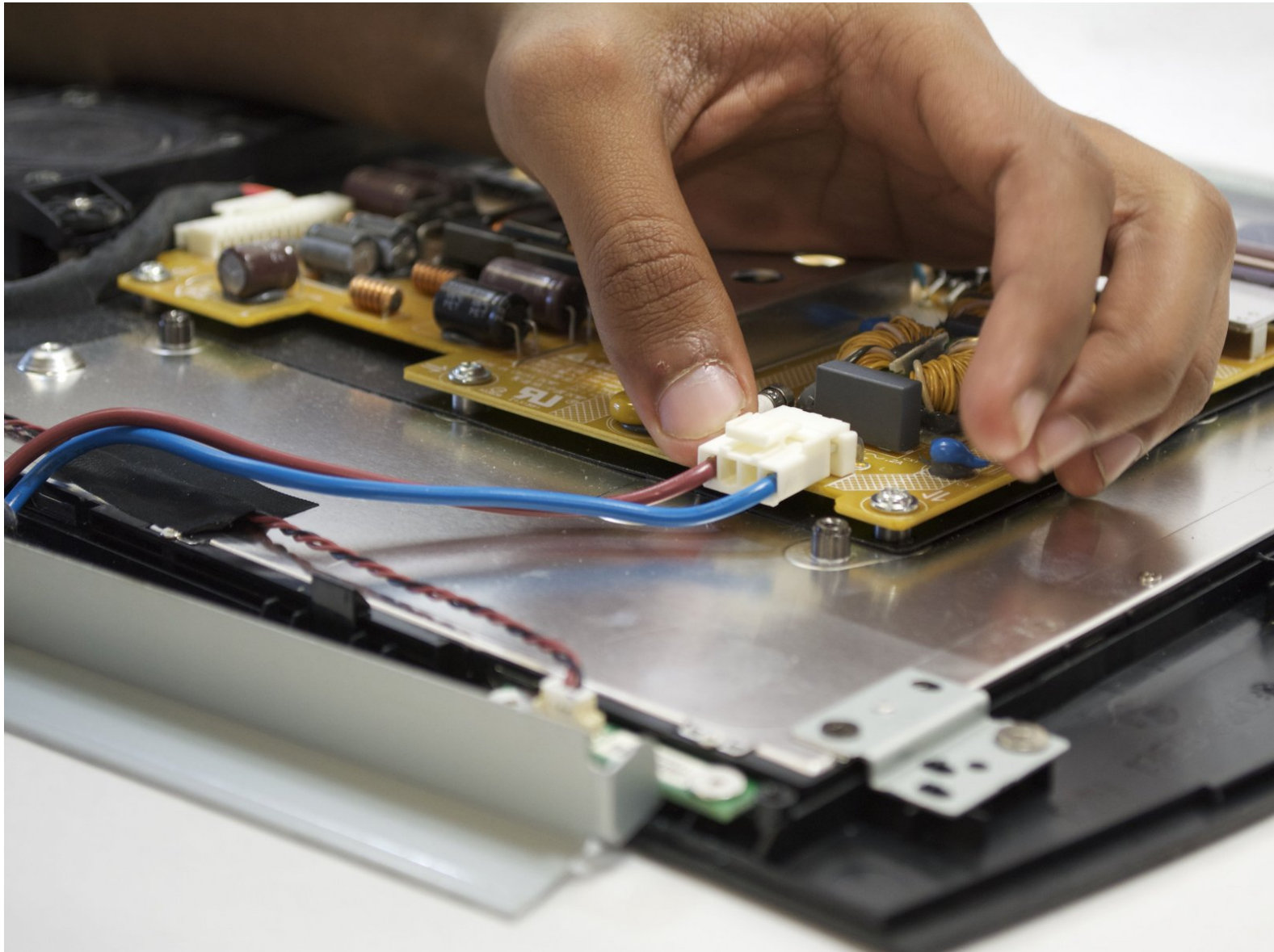




Sony PlayStation 3D Display Power Port Replacement

This will show you how to replace the Power Port

Written By: Logan Simon



INTRODUCTION

This repair might be needed if your device is not receiving power.



TOOLS:

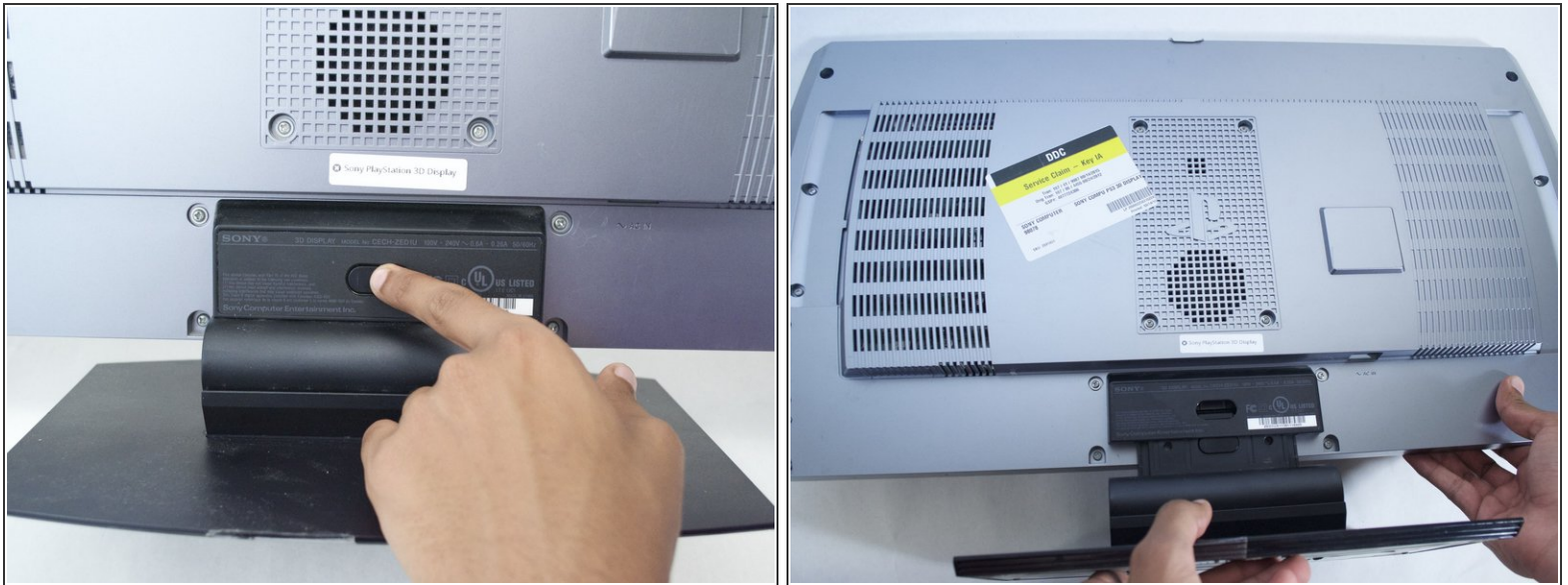
- [Phillips #2 Screwdriver](#) (1)
- [Metal Spudger](#) (1)
- [iFixit Opening Tools](#) (1)



PARTS:

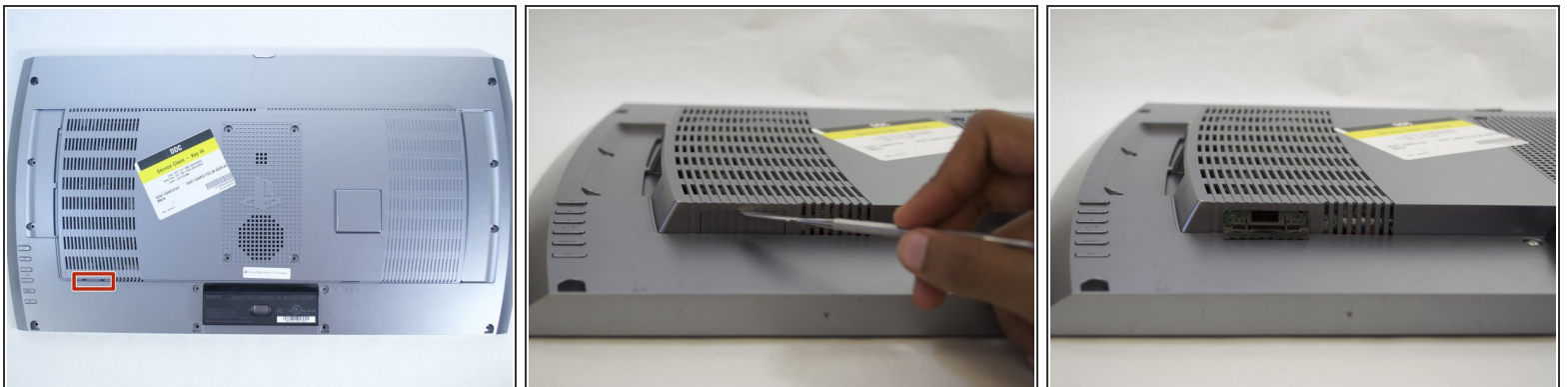
- [PlayStation 3D Power Supply Board](#) (1)
- [PlayStation 3D Power Adapter](#) (1)

Step 1 — Rear Case



- Remove the base by pushing in the button and sliding out the unit.

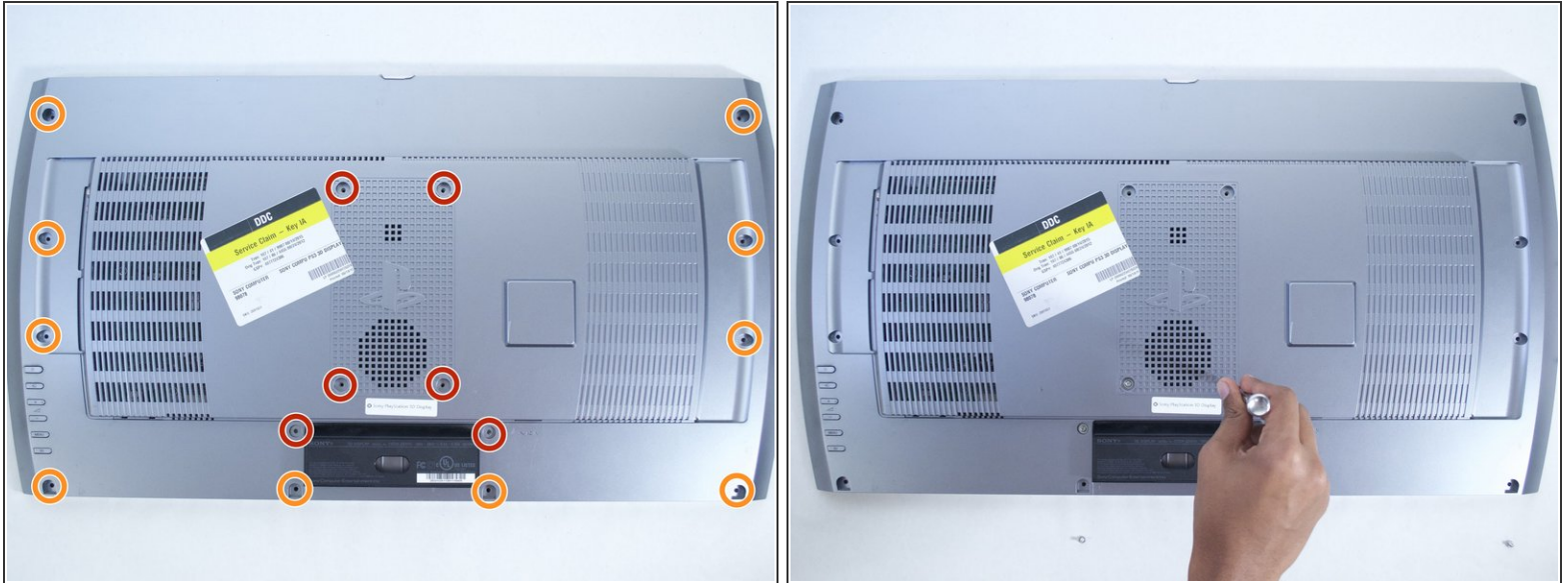
Step 2



- Remove USB port cover from back plate with a metal spudger.

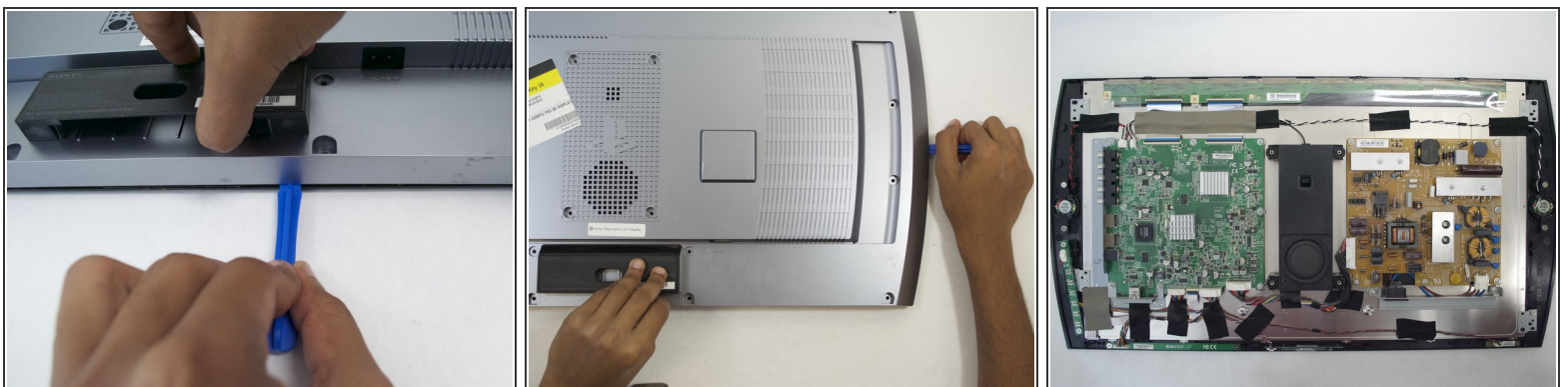
i This will prevent the cover from falling under the back plate once it is removed.

Step 3



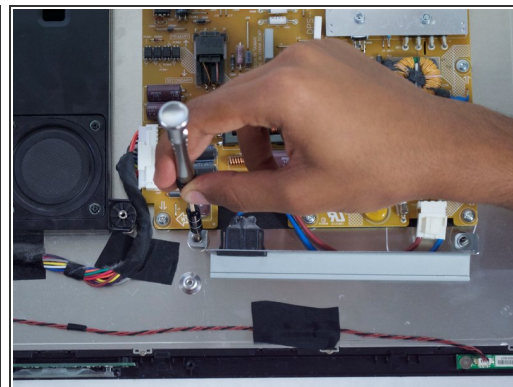
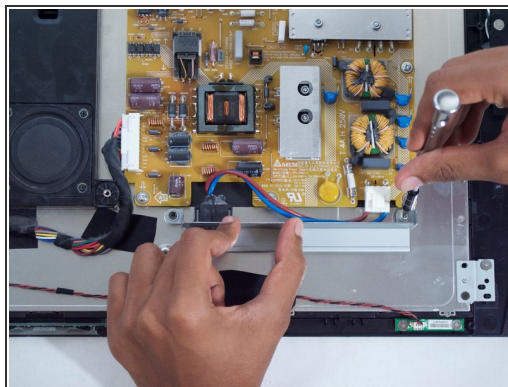
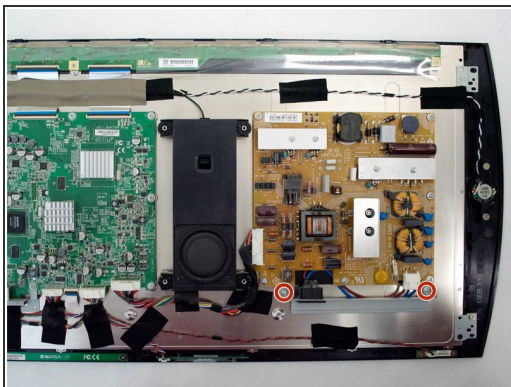
- With the Phillips #02 screwdriver, remove the six 6 mm length x 6 mm head screws from the back plate.
- With the Phillips #02 screwdriver, remove the ten 6 mm length x 8 mm head screws from the back plate.
- ⓘ These screws have different threads and need to be kept separate.

Step 4



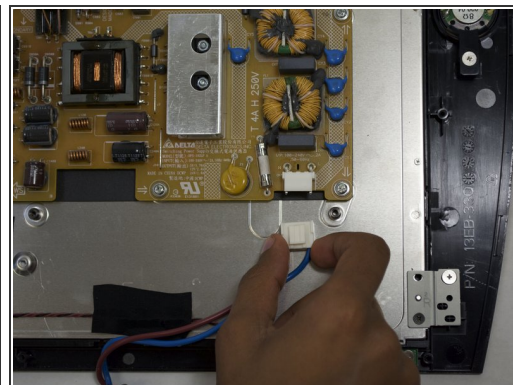
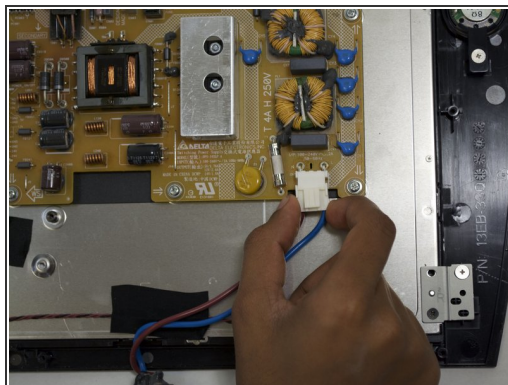
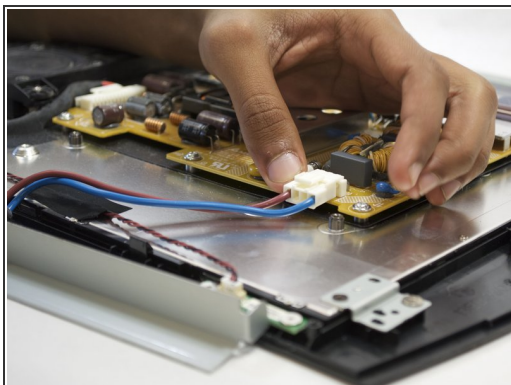
- Remove back plate with a plastic opening tool by slowly prying around the entire plate.
- ⚠ Be gentle to avoid breaking the plastic clips which hold the plate.
- Once separated the plate easily lifts off.

Step 5 — Power Port



- With the Phillips #02 screwdriver, remove the two 5mm length x 7mm head screws from the left and right side of the power port plate.

Step 6



- Remove the power port by depressing the white tab attached to the wires.

To reassemble your device, follow these instructions in reverse order.