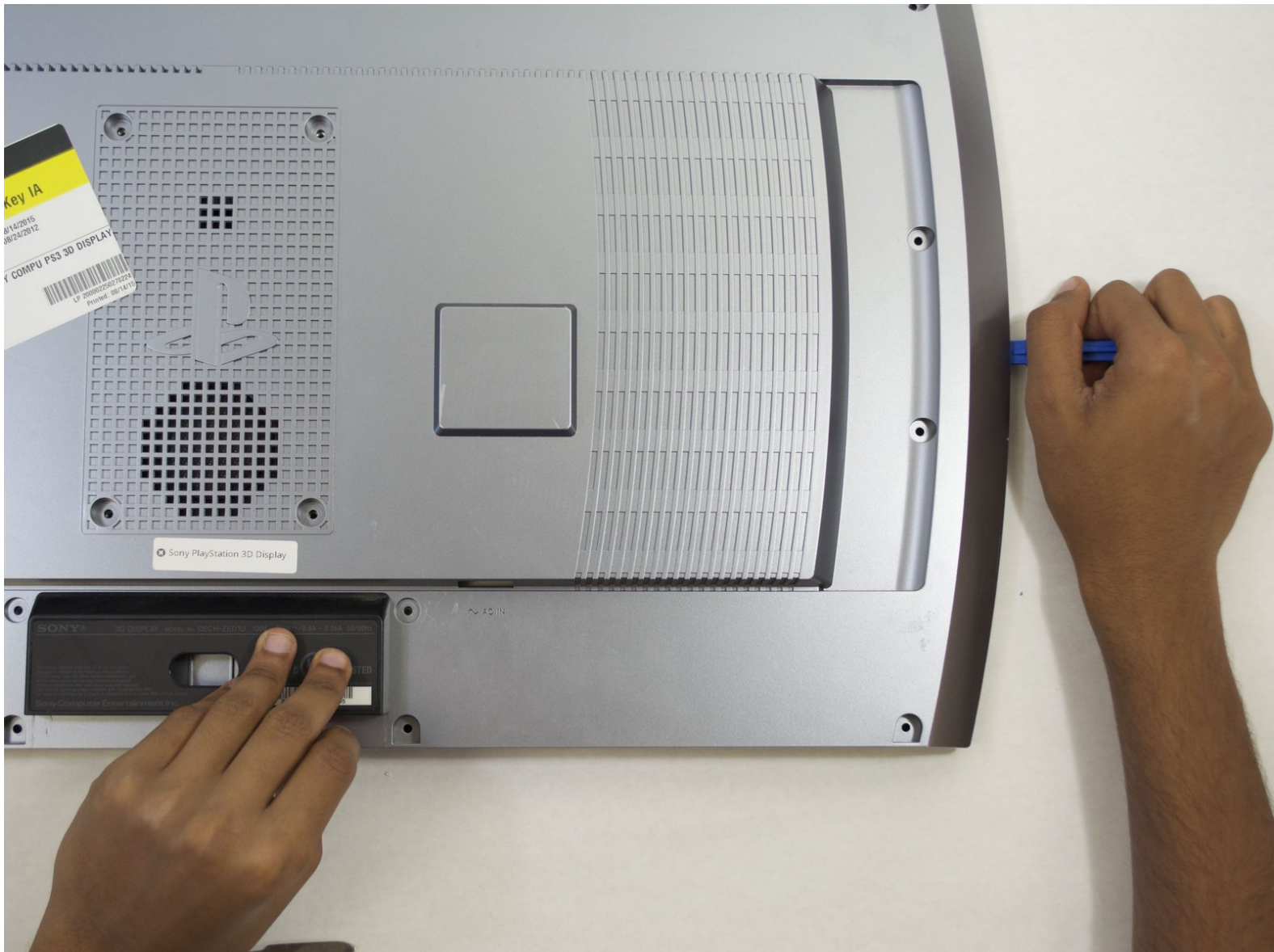




# Sony PlayStation 3D Display Rear Case Replacement

Prerequisite Only. This guide will walk you through how to remove the back of the device.

Written By: Tia McNaughton





## TOOLS:

- [Metal Spudger](#) (1)
- [Phillips #2 Screwdriver](#) (1)
- [iFixit Opening Tools](#) (1)



## PARTS:

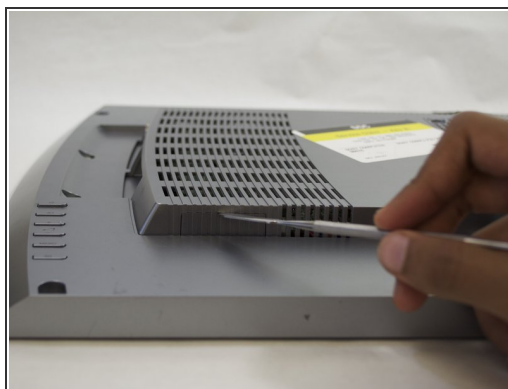
- [PlayStation 3D Rear Panel](#) (1)

## Step 1 — Rear Case



- Remove the base by pushing in the button and sliding out the unit.

## Step 2

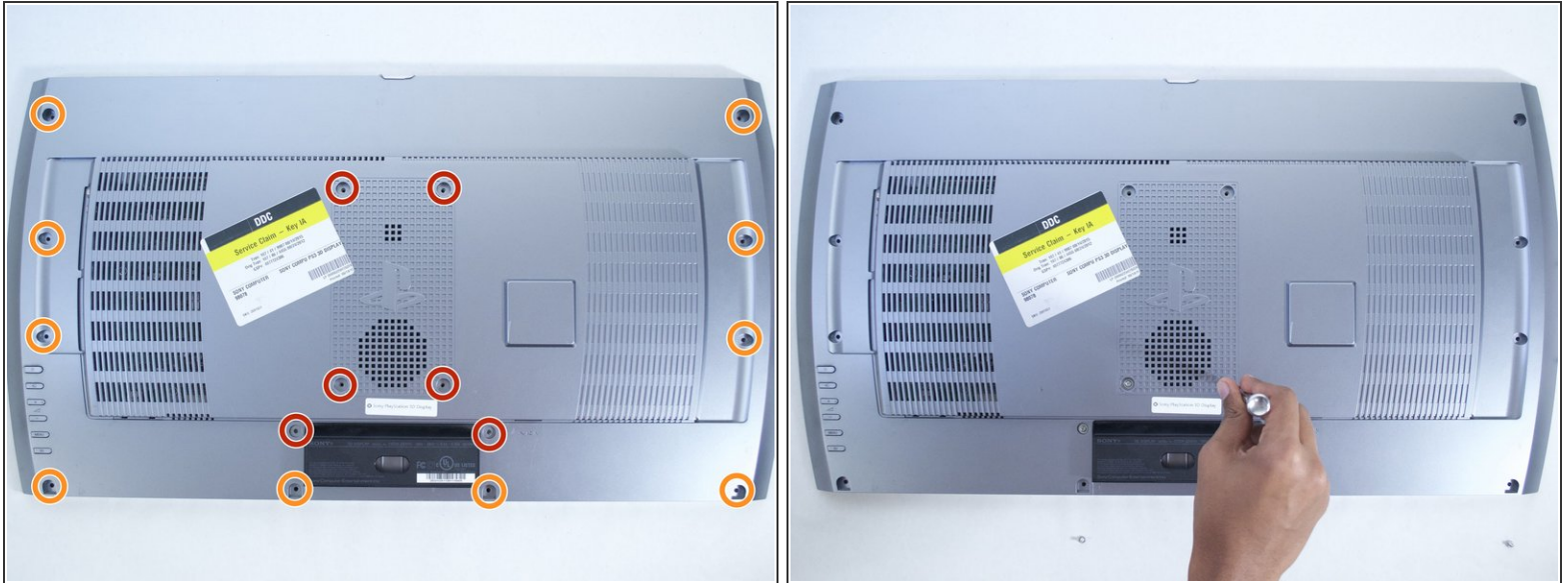


- Remove USB port cover from back plate with a metal spudger.

**i** This will prevent the cover from falling under the back plate once it is removed.

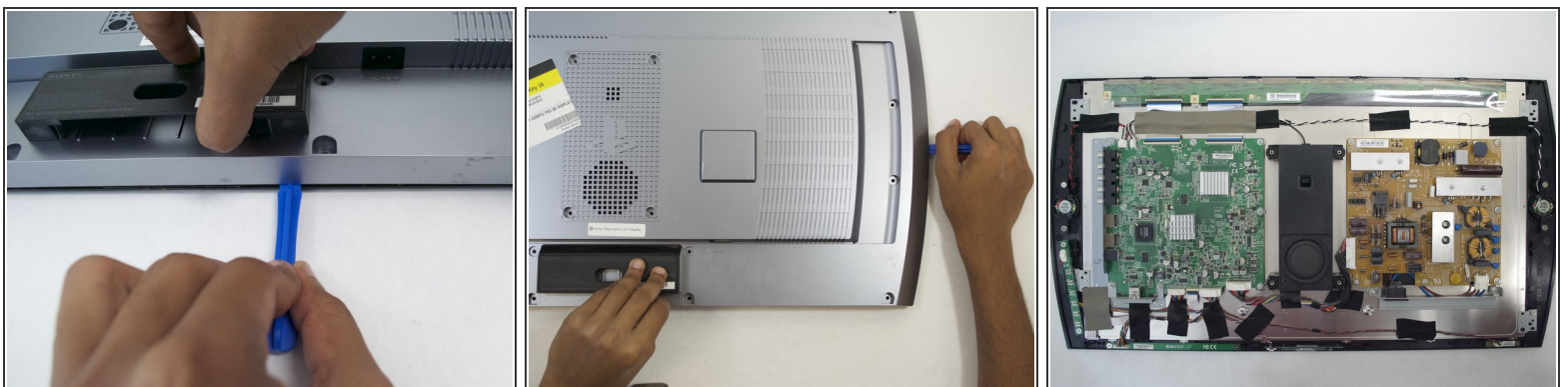


### Step 3



- With the Phillips #02 screwdriver, remove the six 6 mm length x 6 mm head screws from the back plate.
- With the Phillips #02 screwdriver, remove the ten 6 mm length x 8 mm head screws from the back plate.
- ⓘ These screws have different threads and need to be kept separate.

### Step 4



- Remove back plate with a plastic opening tool by slowly prying around the entire plate.
- ⚠ Be gentle to avoid breaking the plastic clips which hold the plate.
- Once separated the plate easily lifts off.

To reassemble your device, follow these instructions in reverse order.