



Sony PlayStation SCPH-9002 Teardown

Written By: [imacg517](#)



INTRODUCTION

I have a PlayStation 1, and i have decided to make a new teardown of it.

I'm spanish, so my english is a bit poor, and sorry for the mistakes made in this teardown.

Without further delay, we start.



TOOLS:

- [iFixit Opening Tools](#) (1)
 - [Spudger](#) (1)
 - [64 Bit Driver Kit](#) (1)
-

Step 1 — Sony PlayStation SCPH-9002 Teardown



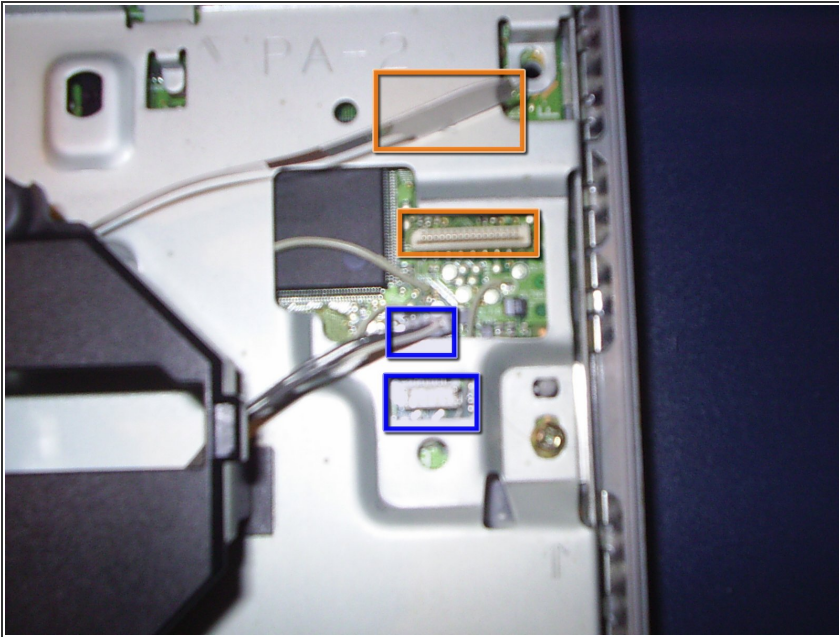
- Here's the PS1.
- Turn the PS1 over and remove the six screws.

Step 2



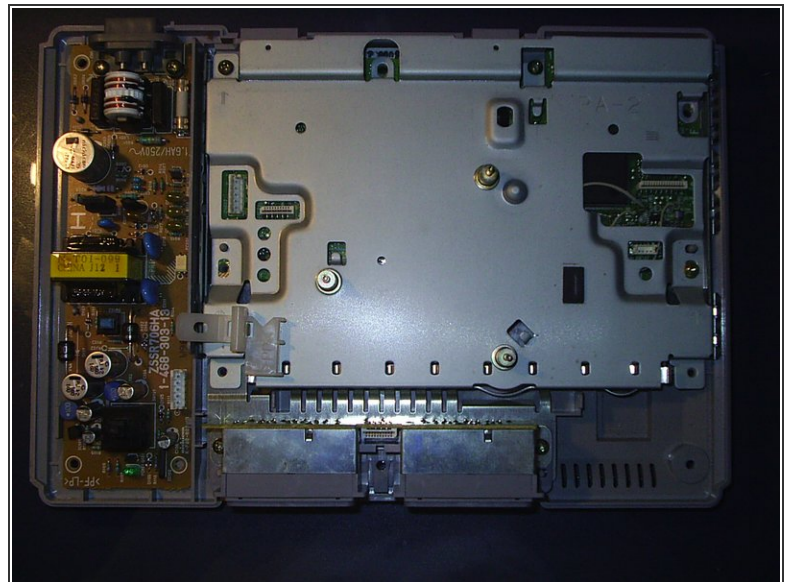
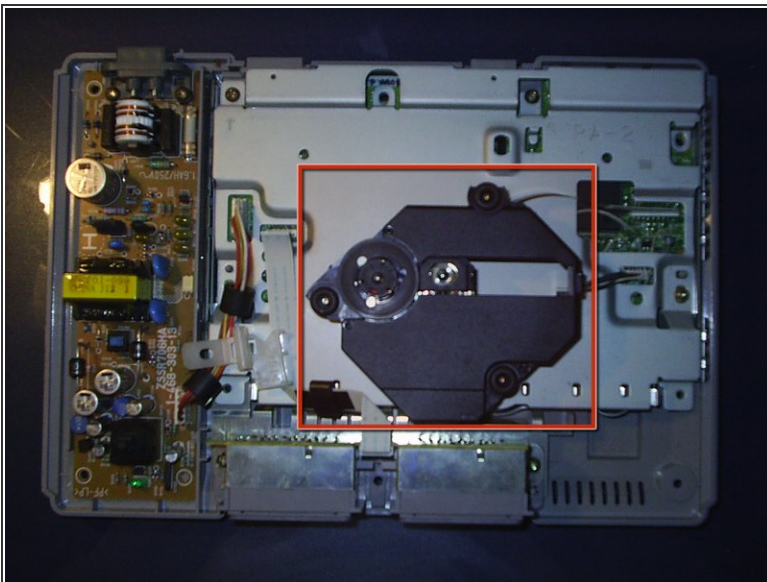
- Remove the top cover. It's very easy.

Step 3



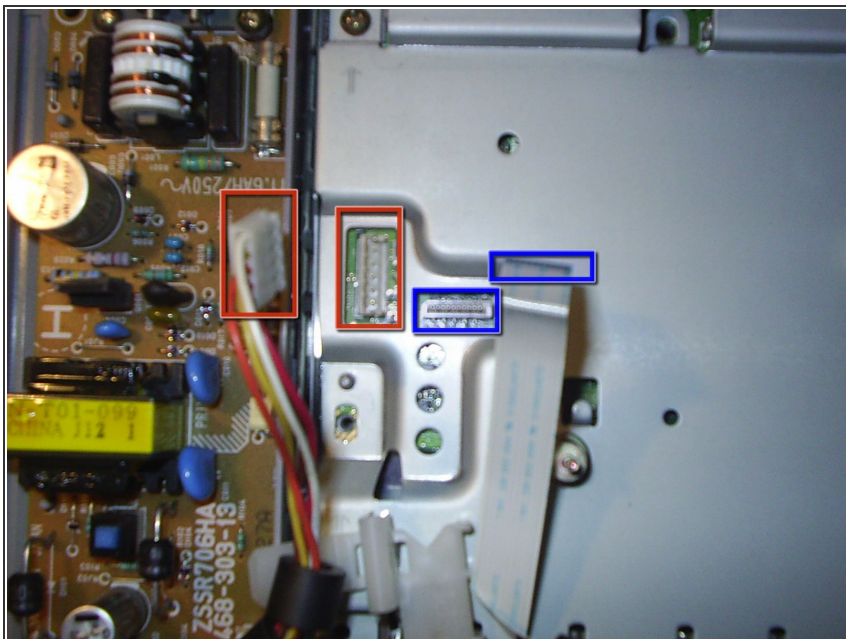
- Disconnect both CD-ROM connectors.
- CD connector one and the socket it connects to.
- CD connector two and the socket it connects to.

Step 4



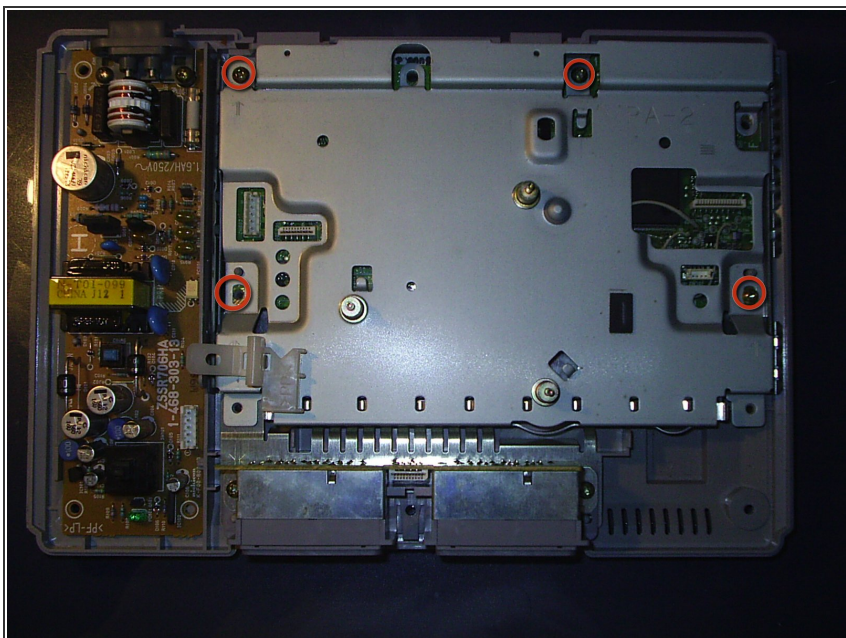
- Remove the CD-ROM reader. You should be able to pull it out gently, although you may have to wiggle it around a bit to loosen the rubber holders.

Step 5



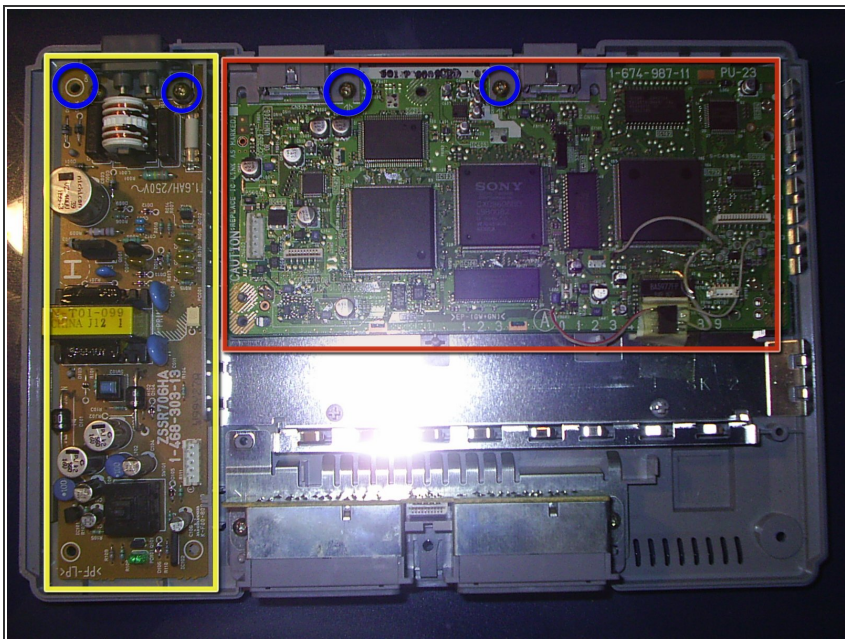
- Detach both cables. They go to the power supply and to the memory cards and controller connectors.

Step 6



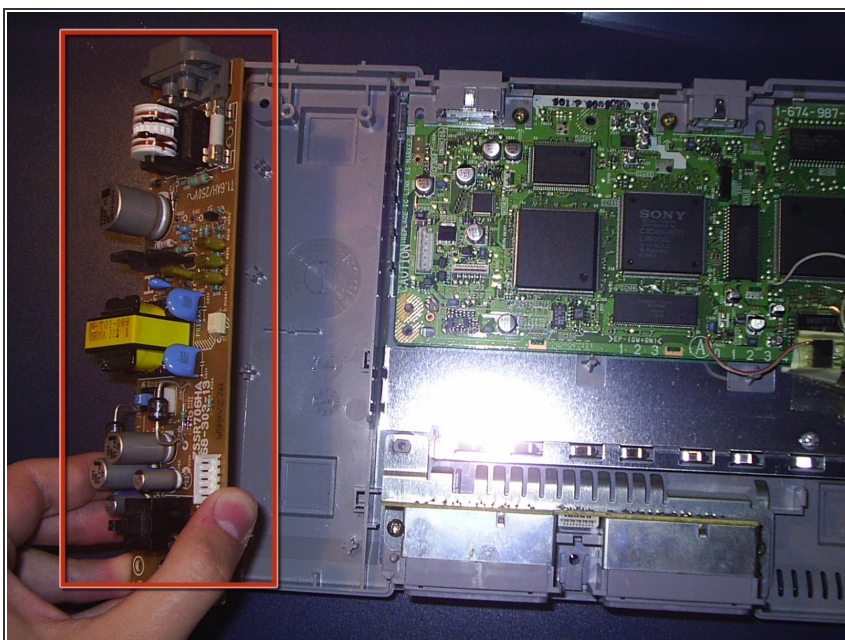
- Remove the four screws and the metal cover.

Step 7



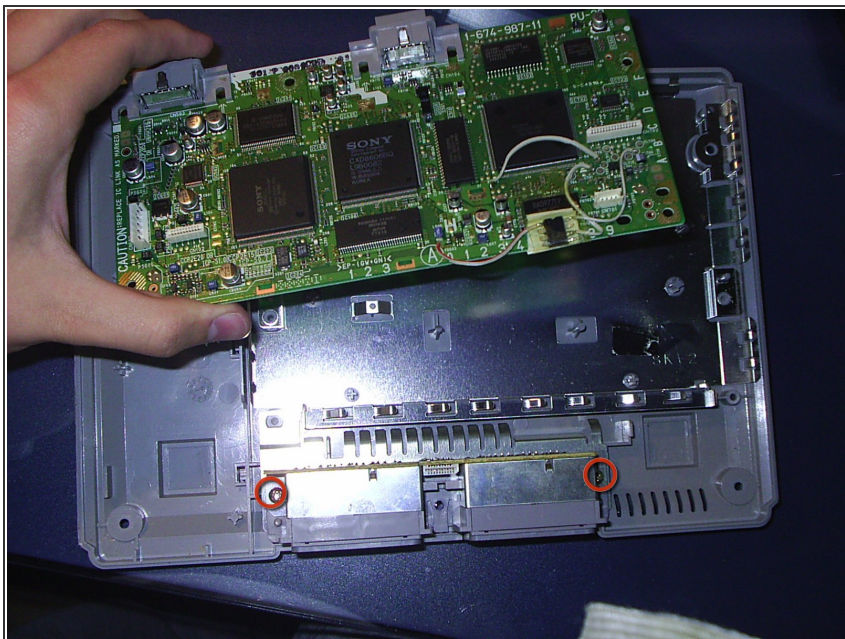
- Now you have the motherboard!
- And the power supply.
- Remove the four screws from the motherboard and the power supply.

Step 8



- Once the screws are removed, remove the power supply.

Step 9



- Remove the motherboard, and both of the screws from the memory card/ controller connection mechanism.

Step 10



- Now, you have all your PlayStation 1 parts!
- Main Board
- Lower Casing
- EMI Shield
- Power Supply
- Disk Reader
- Memory Card/ Controller Mechanism