



Sony Pulse Elite Edition Earpiece Deconstruction

Prerequisite only.

Written By: Chris Echter



INTRODUCTION

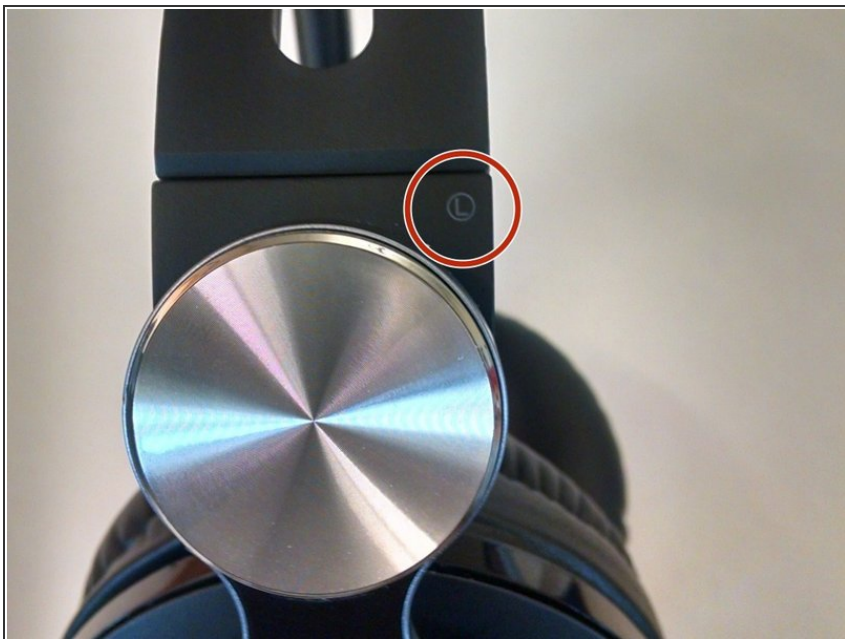
Prerequisite guide of earpiece deconstruction. Necessary for most part replacements.



TOOLS:

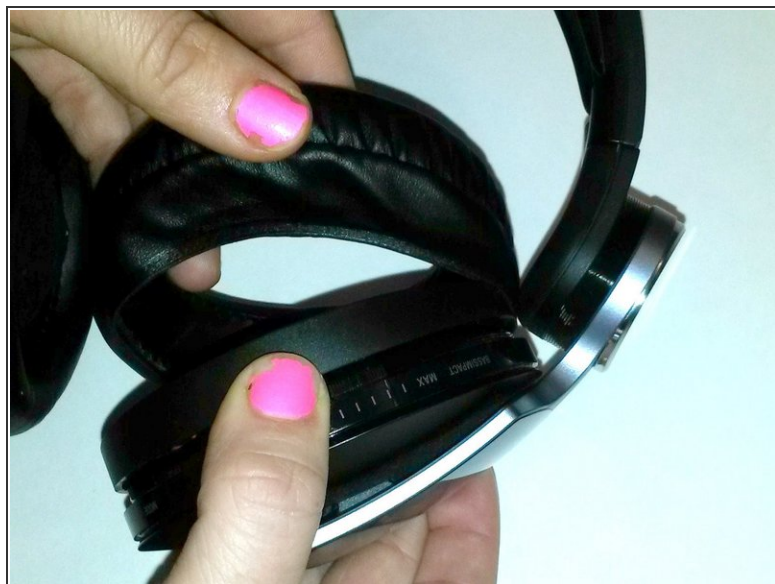
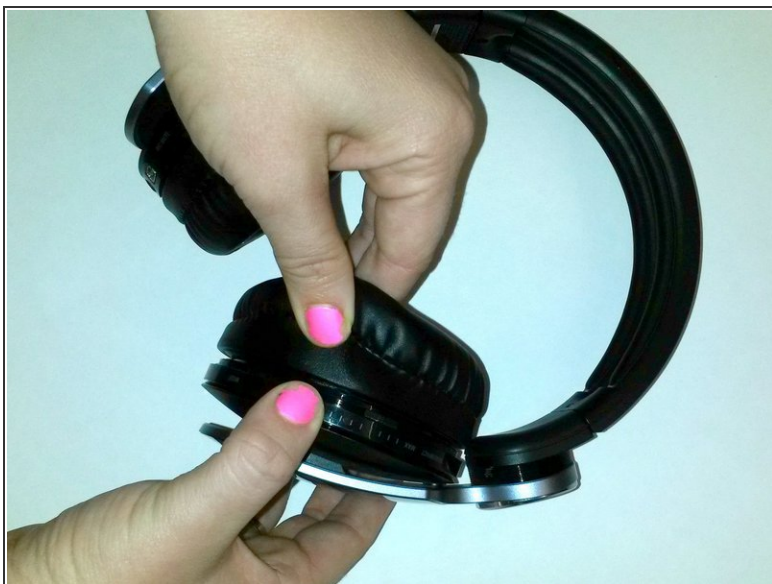
- [Phillips #00 Screwdriver](#) (1)
 - [Spudger](#) (1)
-

Step 1 — Identifying Earpiece



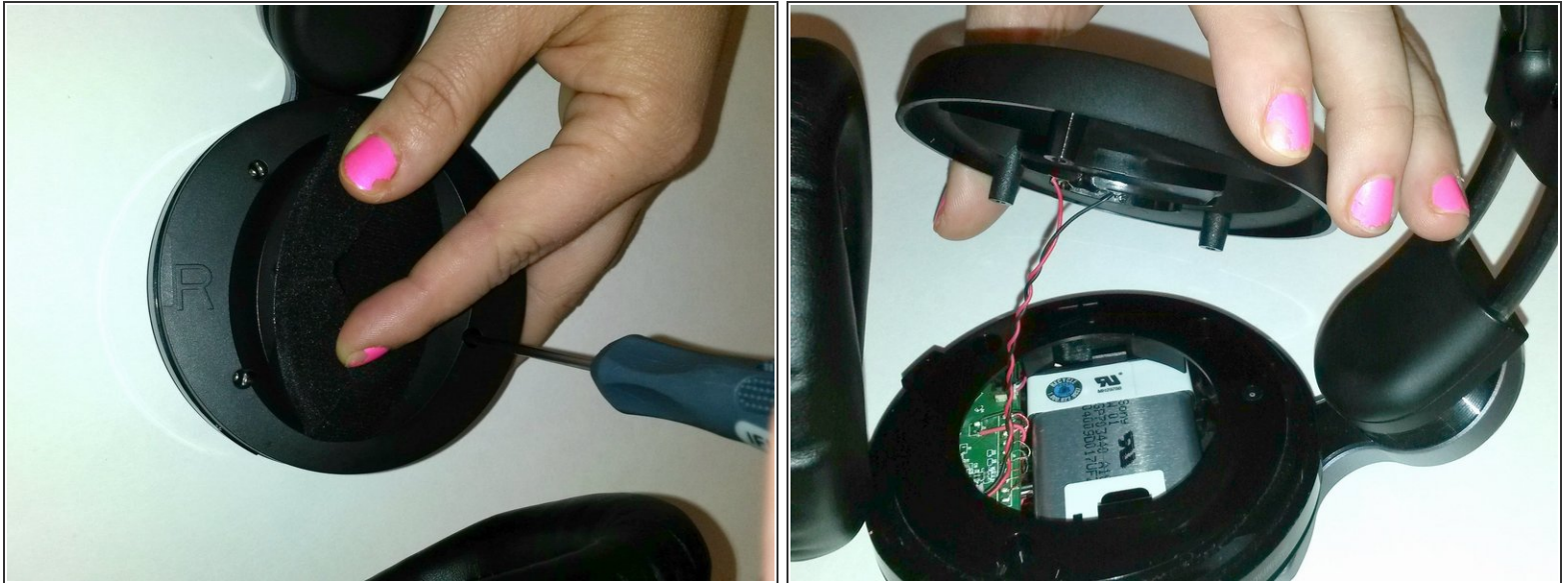
- Locate the side designation on the headband-earpiece junction.
- The battery is in the right earpiece.
- The motherboard is in the left earpiece.

Step 2 — Ear Cushion Removal



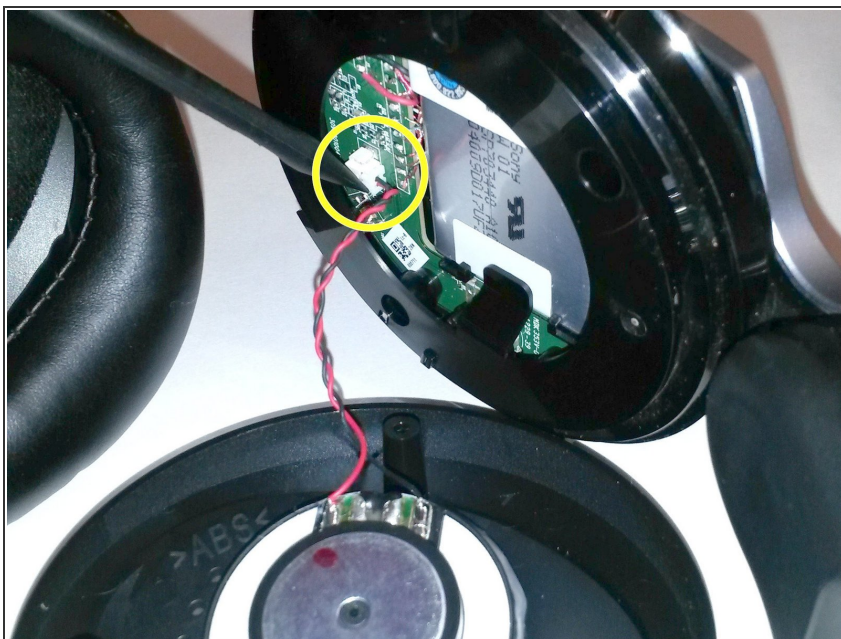
- Gently pull around the perimeter of the ear cushion until it comes off.

Step 3 — Outer Ear Rim Removal



- Use the PH00 Screwdriver to remove the three Phillips 6mm screws around the perimeter of the ear cup.
 - Gently pull the outer ear rim off of the headset assembly.
- ⚠ Harsh removal may cause permanent damage to the speaker wires.

Step 4 — Remove Speaker Housing



- Using tweezers, gently pry the red and black speaker wires from the attached socket.

To reassemble your device, follow these instructions in reverse order.