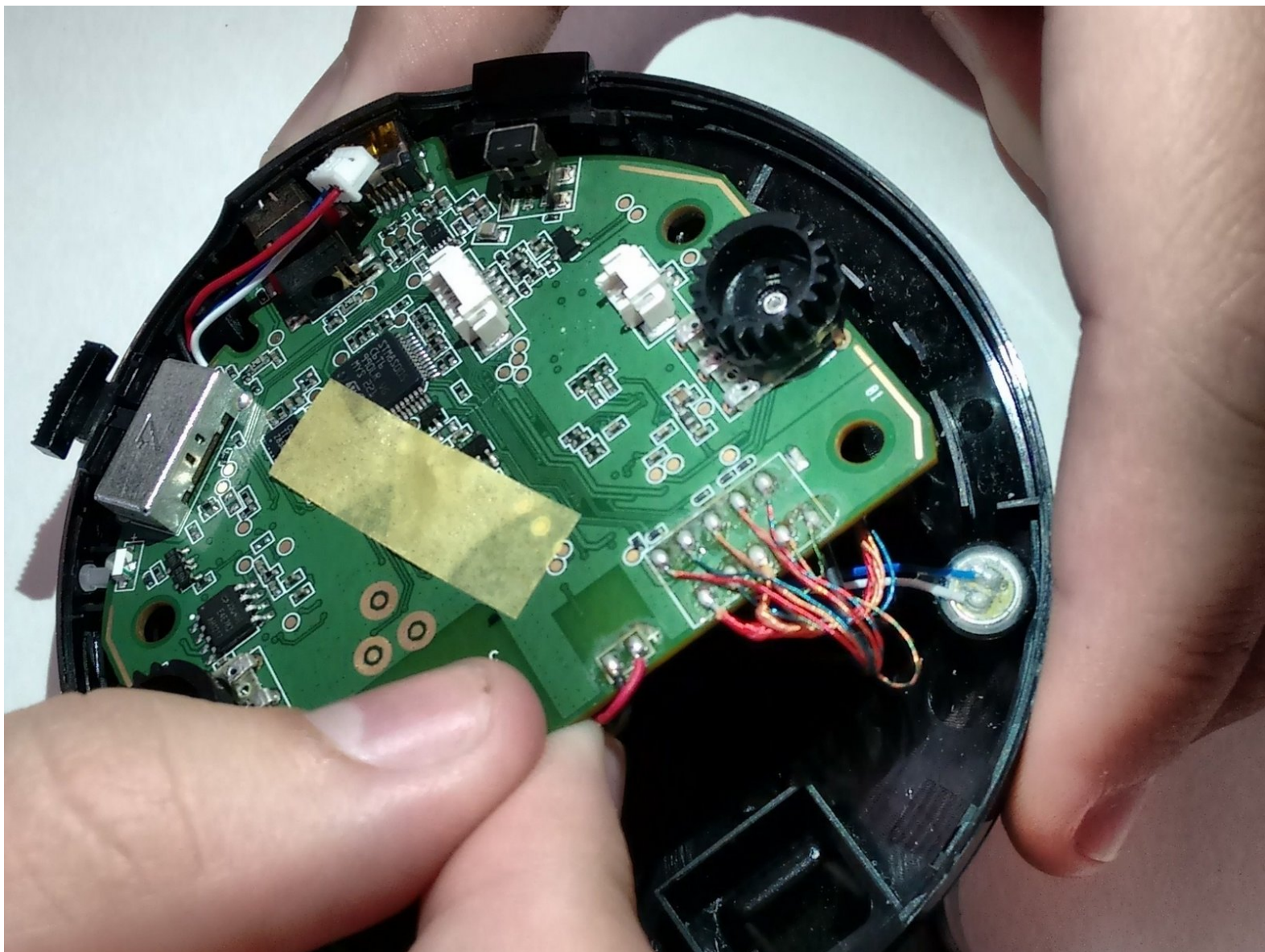




# Sony Pulse Elite Edition Motherboard Replacement

This guide describes how to replace the motherboard in the Sony Pulse Elite Edition.

Written By: Chris Echter

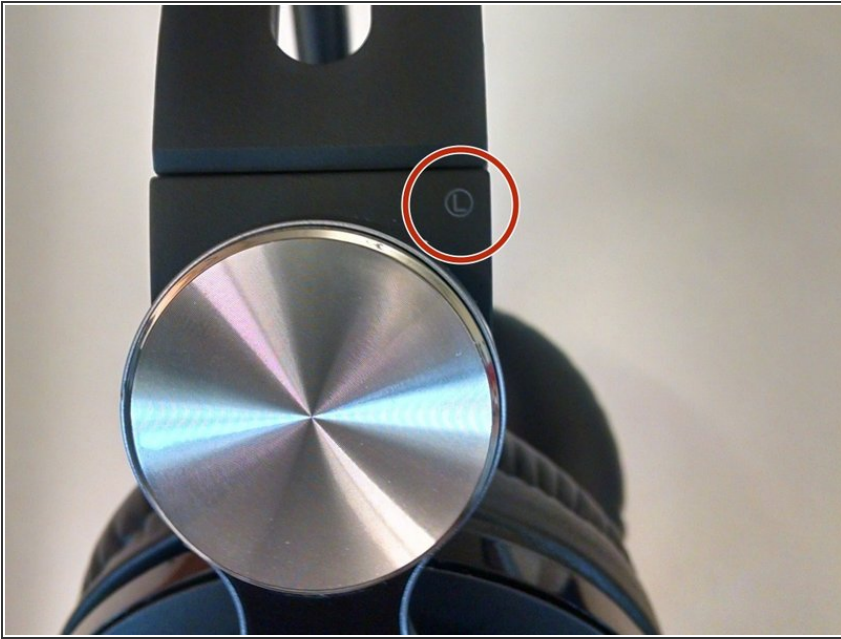




## TOOLS:

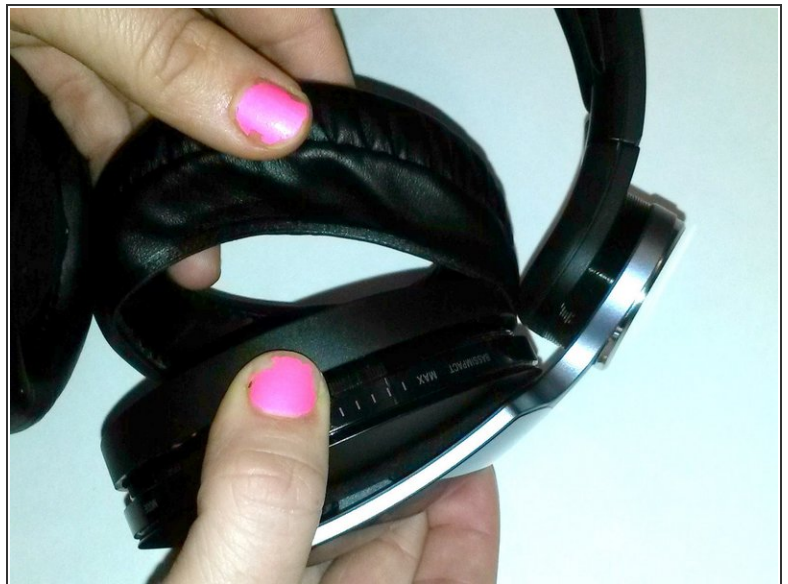
- [Phillips #00 Screwdriver](#) (1)
  - [Spudger](#) (1)
  - [Tweezers](#) (1)
  - [Soldering Iron](#) (1)
-

## Step 1 — Identifying Earpiece



- Locate the side designation on the headband-earpiece junction.
- The battery is in the right earpiece.
- The motherboard is in the left earpiece.

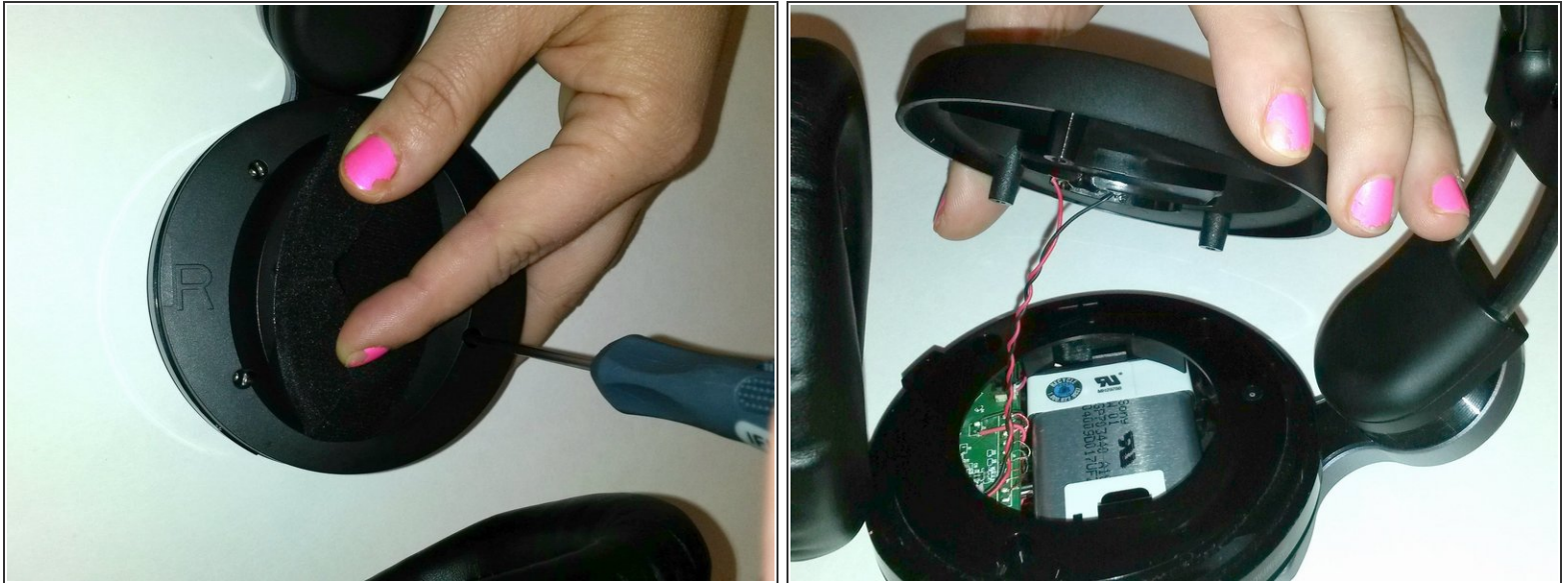
## Step 2 — Ear Cushion Removal



- Gently pull around the perimeter of the ear cushion until it comes off.



### Step 3 — Outer Ear Rim Removal



- Use the PH00 Screwdriver to remove the three Phillips 6mm screws around the perimeter of the ear cup.
- Gently pull the outer ear rim off of the headset assembly.

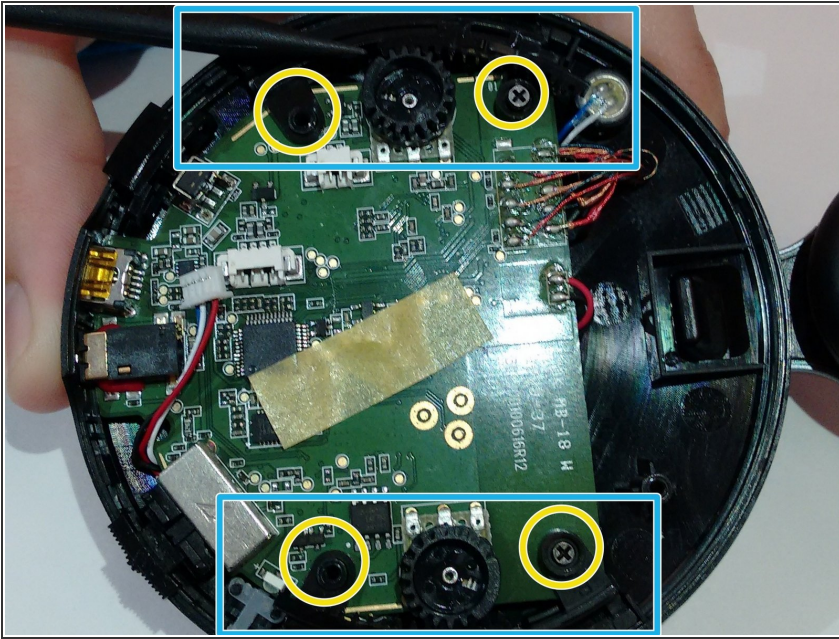
⚠ Harsh removal may cause permanent damage to the speaker wires.

### Step 4 — Remove Speaker Housing



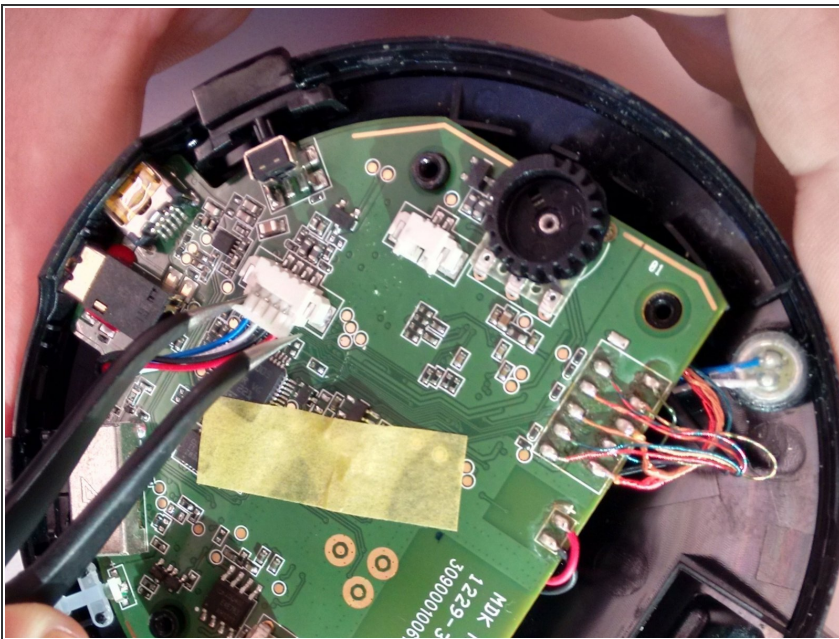
- Using tweezers, gently pry the red and black speaker wires from the attached socket.

## Step 5 — Unscrew Motherboard Brackets



- Using the Phillips #00 screwdriver, remove the four Phillips 5 mm screws from the two motherboard brackets.
- Keep the two brackets and screws in a safe place.

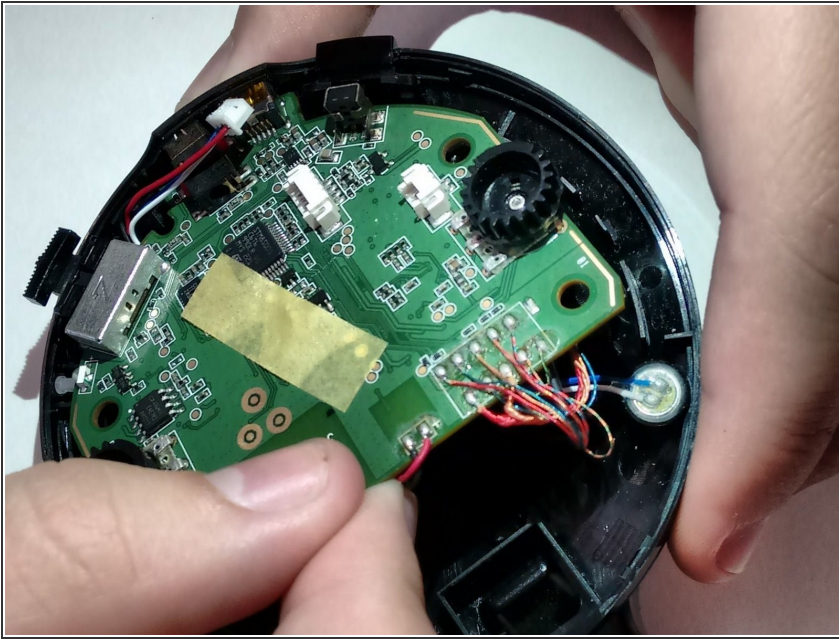
## Step 6 — Remove the Wires



- Using tweezers, unclip the blue, white, and red wire harness from the motherboard. This harness is for the microphone.
  - Using the tweezers, unclip the red and black wire harness from the motherboard. This harness is for the speakers.
- ⚠ Make sure all wire harnesses are completely unclipped prior to motherboard removal. Failure to unclip completely risks permanent damage to the headset.

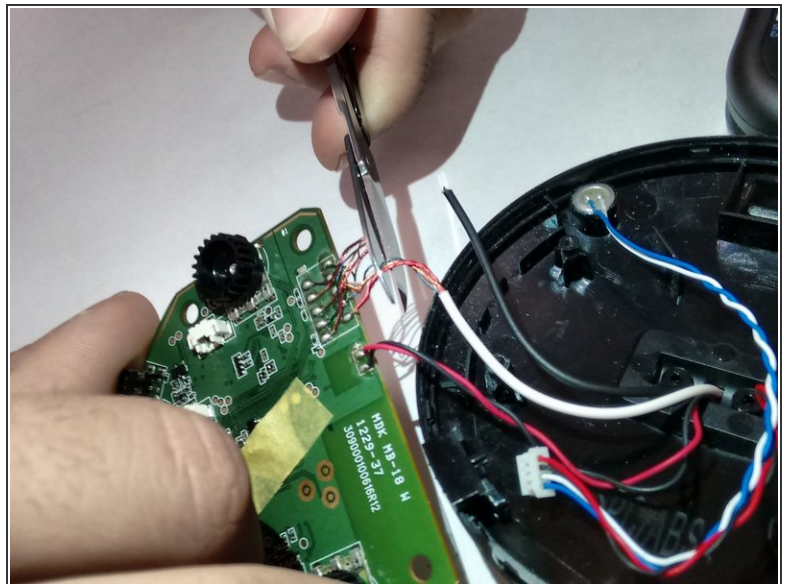
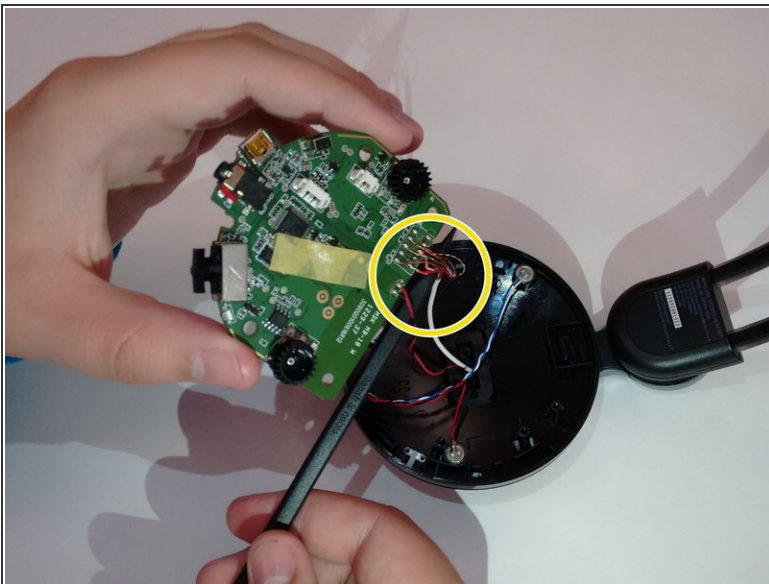


## Step 7 — Initial Motherboard Removal



- Using a finger, gently tug up on the motherboard.
- ⚠ Make sure to only lift the motherboard up gently as there are still wires connecting the motherboard to the ear piece.
- ⓘ Try and lift the motherboard up straight, as it will catch on the screw mounts otherwise.

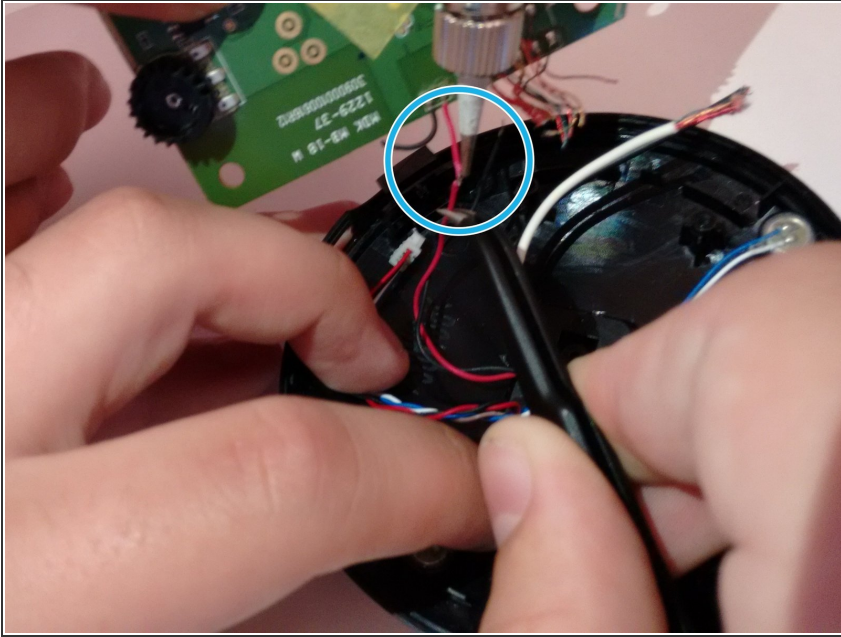
## Step 8 — Fixed Wire Removal



- Using wire cutters, cut all of the permanent wires from the motherboard.
- Strip the wires on the ear piece portion about a quarter of an inch from their cut ends.
- ⓘ These will need need to be soldered to the new motherboard, so it will be easiest to cut the wires, 1/2" away from the motherboard.

This document was generated on 2019-09-25 02:58:57 PM (MST).

## Step 9 — Solder New Motherboard



- Strip the wires on the ends of the new motherboard wires about a half inch from the end.
  - Solder each individual wire from the new motherboard to the corresponding wire on the ear piece.
  - Completely wrap each solder joint with electrical tape so that the exposed wires only contact their corresponding wires.
- ⚠ Unintentional contact of non-corresponding wires can result in electrical fire and the failure of the device.

To reassemble your device, follow these instructions in reverse order.