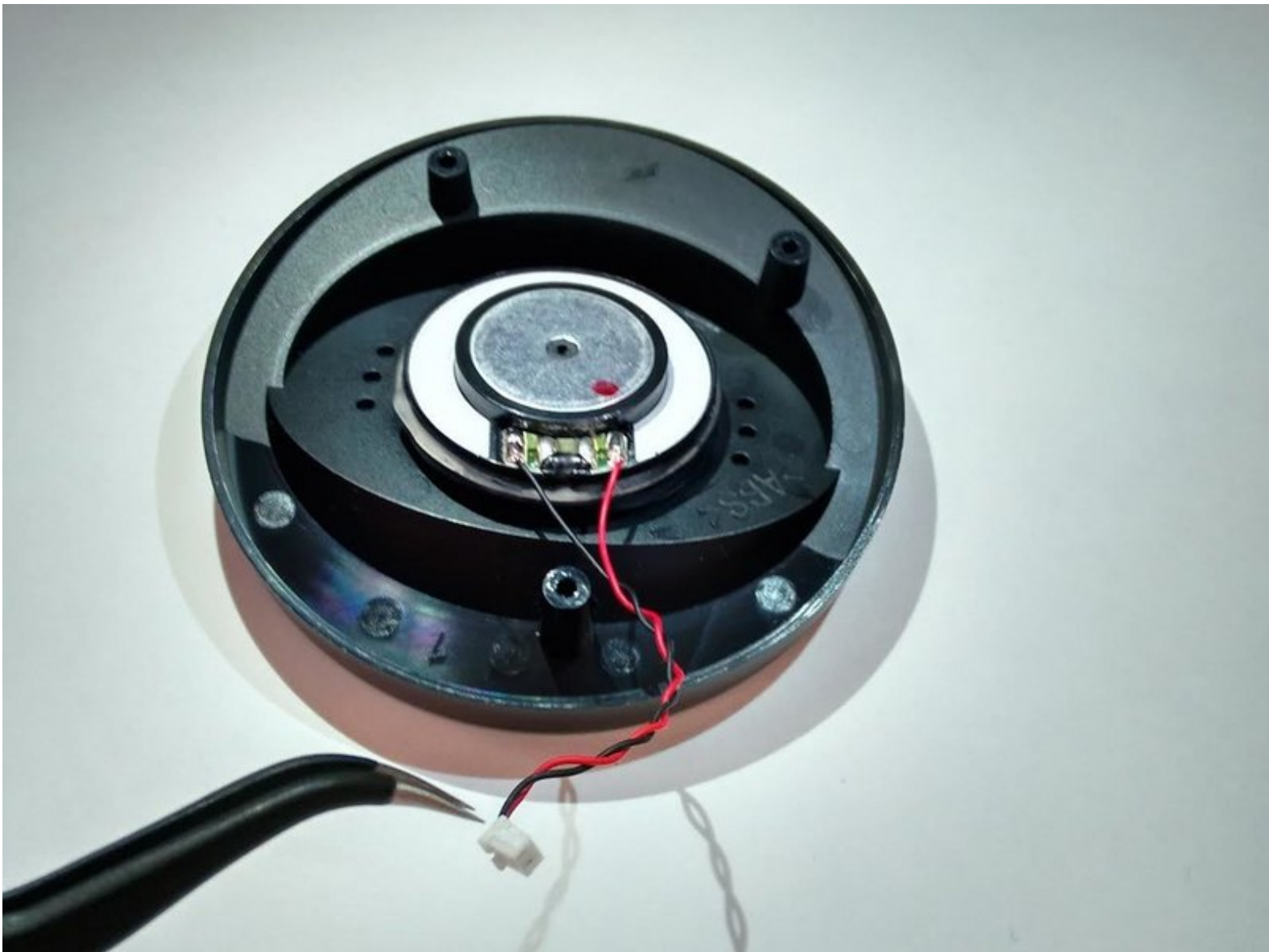




# Sony Pulse Elite Edition Speaker Replacement

A guide on replacing the speaker inside a Sony Pulse Elite Edition.

Written By: Armon Davani



---

## INTRODUCTION

This guide demonstrates how to open up your headset and locate the speaker for replacement if it stops working.

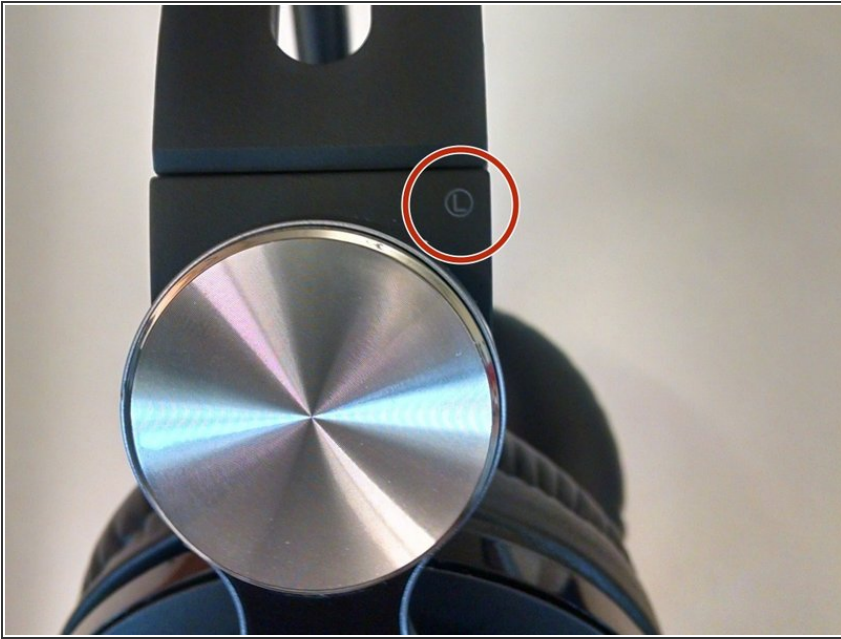
---



### TOOLS:

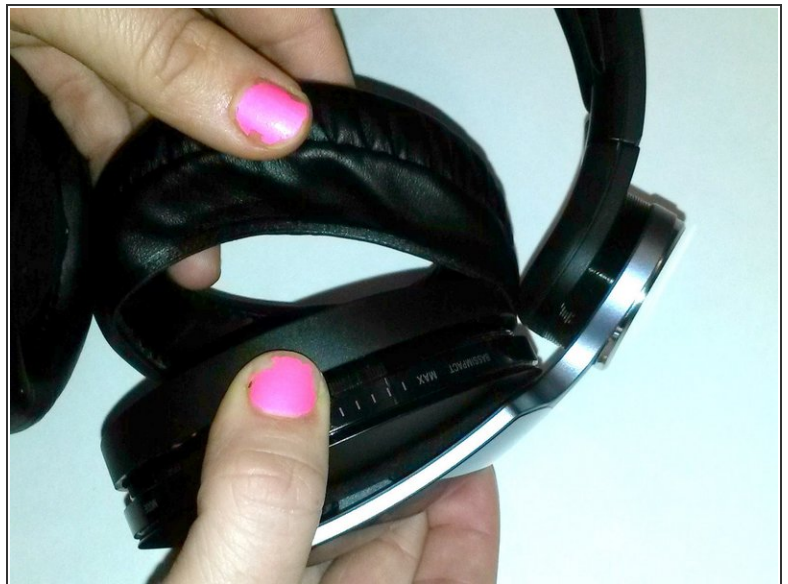
- [Super Glue](#) (1)
  - [Spudger](#) (1)
  - [Phillips #00 Screwdriver](#) (1)
-

## Step 1 — Identifying Earpiece



- Locate the side designation on the headband-earpiece junction.
- The battery is in the right earpiece.
- The motherboard is in the left earpiece.

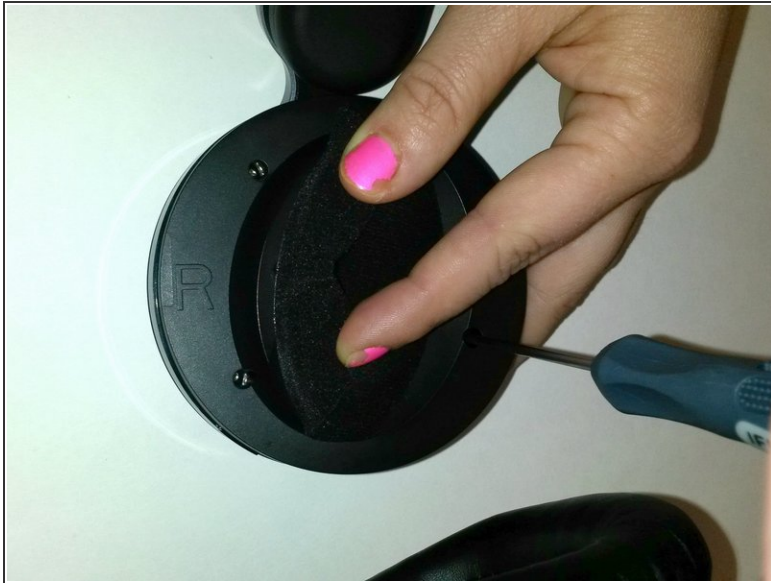
## Step 2 — Ear Cushion Removal



- Gently pull around the perimeter of the ear cushion until it comes off.



### Step 3 — Outer Ear Rim Removal



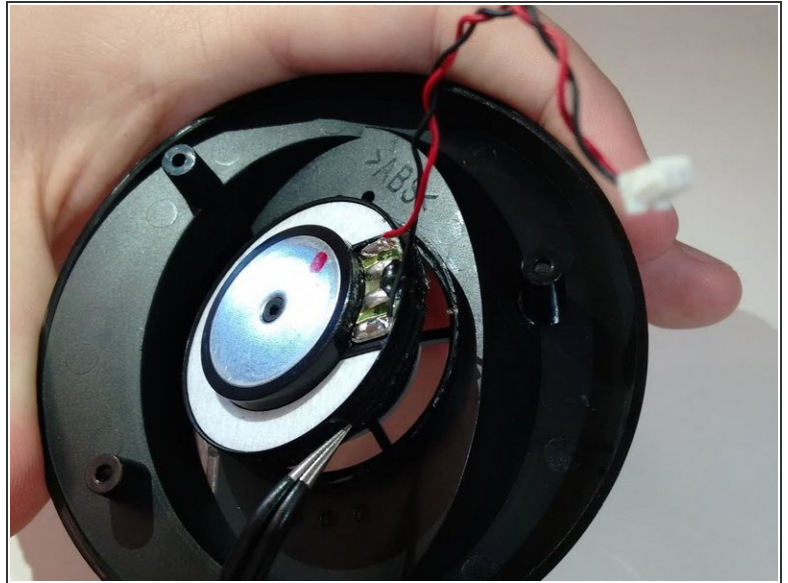
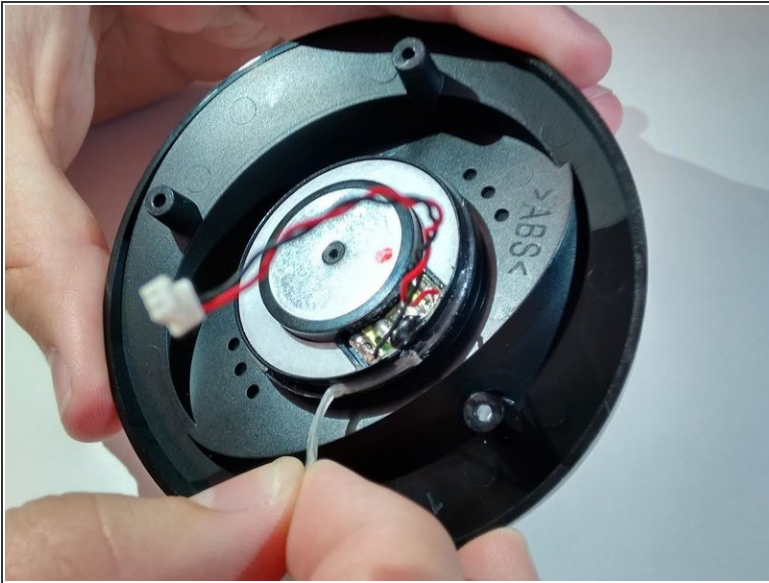
- Use the PH00 Screwdriver to remove the three Phillips 6mm screws around the perimeter of the ear cup.
  - Gently pull the outer ear rim off of the headset assembly.
- ⚠ Harsh removal may cause permanent damage to the speaker wires.

### Step 4 — Remove Speaker Housing



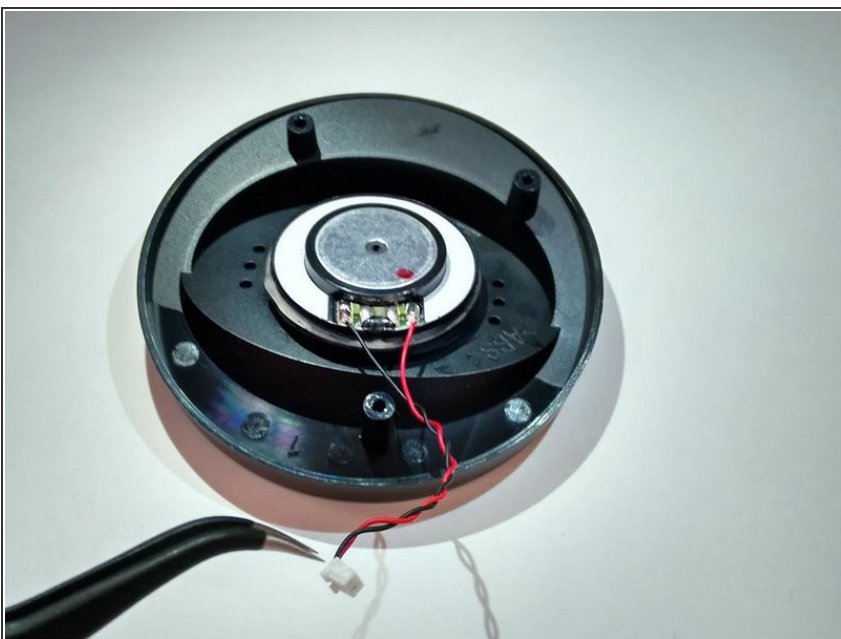
- Using tweezers, gently pry the red and black speaker wires from the attached socket.

## Step 5 — Speaker



- Locate the junction of the electrical speaker and the plastic speaker housing.
- Use the spudger to sever the glue at this junction.
- Remove the electrical speaker from the speaker housing.

## Step 6



- Use super glue to fasten the replacement speaker into the speaker housing.

To reassemble your device, follow these instructions in reverse order.