



# Sony RM-LVR1 Battery Replacement

In this guide, we'll teach you how to replace your battery. Your device will regain lost battery life.

Written By: Dylan Greenwald



## INTRODUCTION

In our this guide, we will demonstrate how to replace the battery for the SONY RM-LVR1. This procedure consists of 3 simple steps. For optimal performance, fully charge the newly installed battery before use.



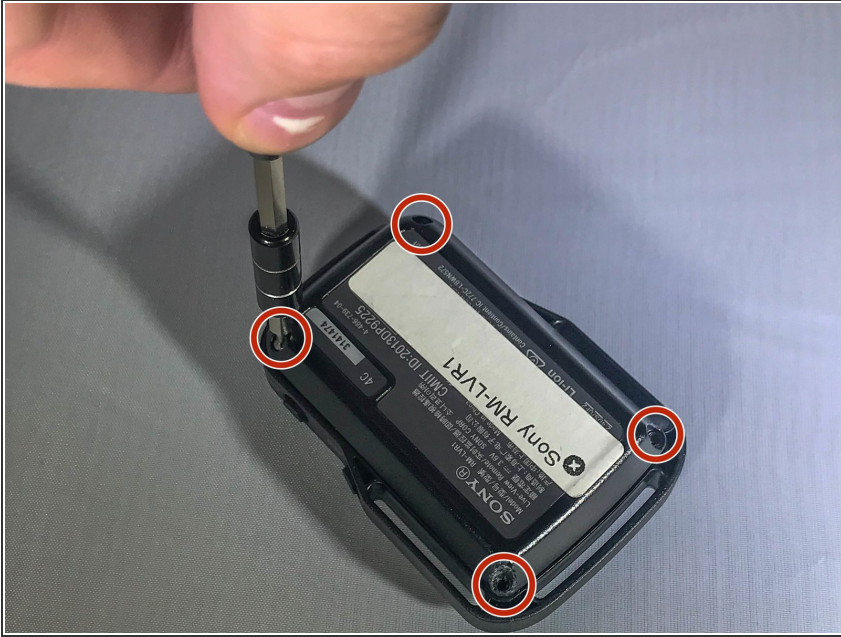
### TOOLS:

- [Phillips #00 Screwdriver](#) (1)

Sss

- [Spudger](#) (1)
-

## Step 1 — Battery



- Use a Phillips #00 screwdriver to remove the four (4) screws on the back of the device.
- If the screws strip or is previously stripped, refer to the [stripped screw repair guide](#).

## Step 2



- Battery is the rectangular and silver object in the center of device.
- Remove battery with finger by prying at the rear.
- If unable to remove battery, pry out using spudger.

To reassemble your device, follow these instructions in reverse order.