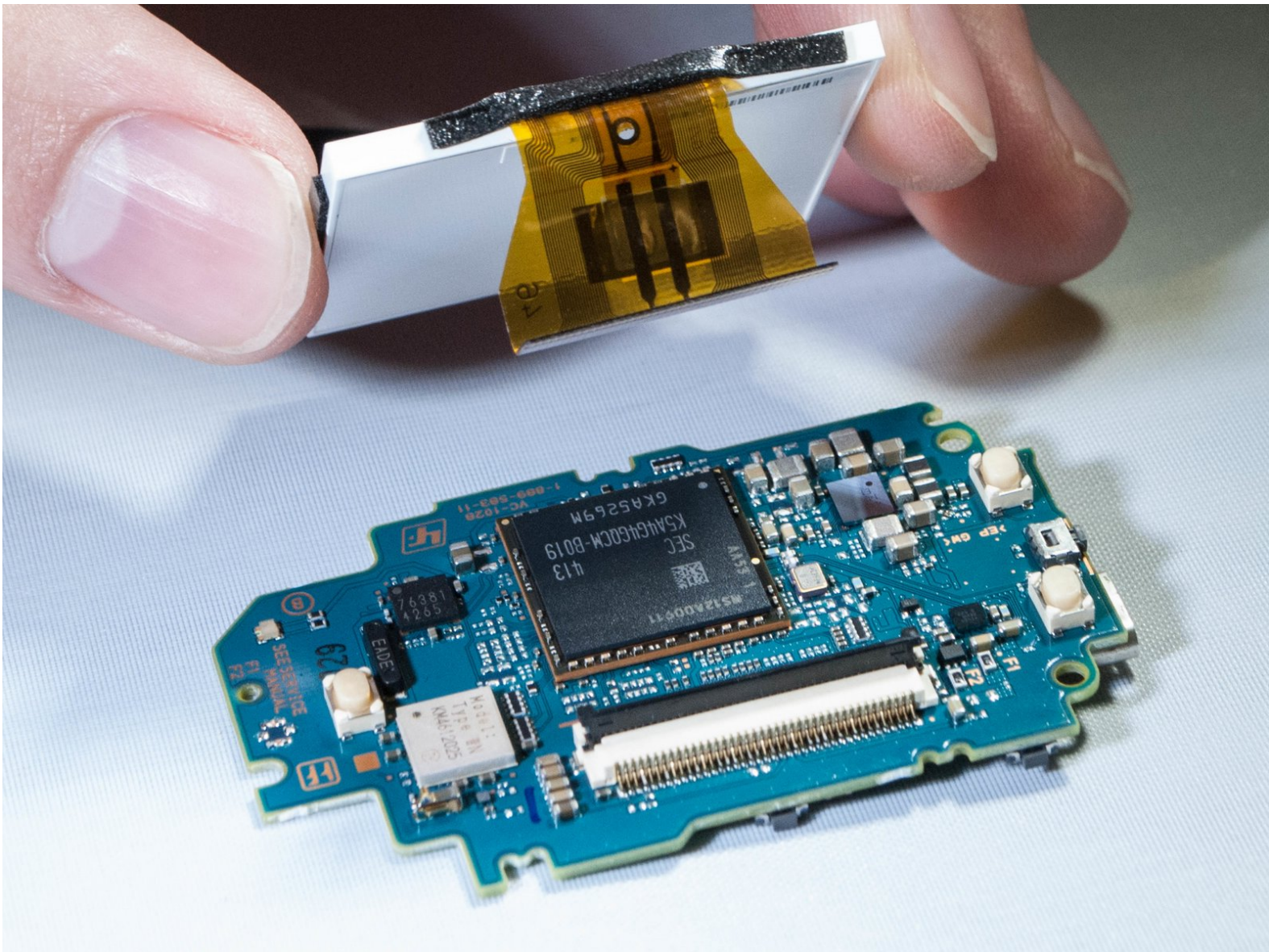




Sony RM-LVR1 LCD Screen Replacement

LCD screen stays black? The device is turned on and fully charged but no screen response? You may need to replace the screen on your device.

Written By: Alexander Thomas



INTRODUCTION

This guide will teach you step by step how to replace your LCD screen.



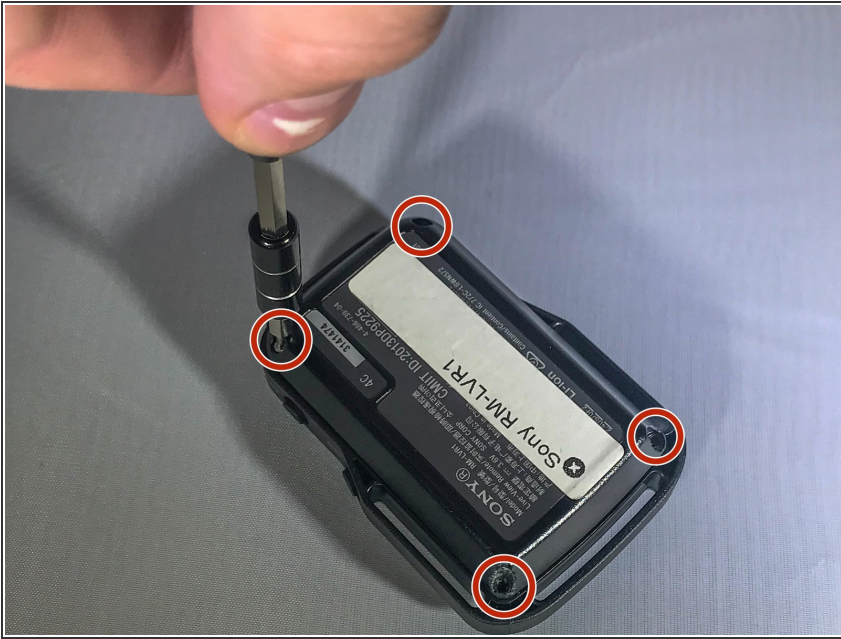
TOOLS:

- [Phillips #00 Screwdriver](#) (1)

Sss

- [Spudger](#) (1)
 - [Tweezers](#) (1)
-

Step 1 — Battery



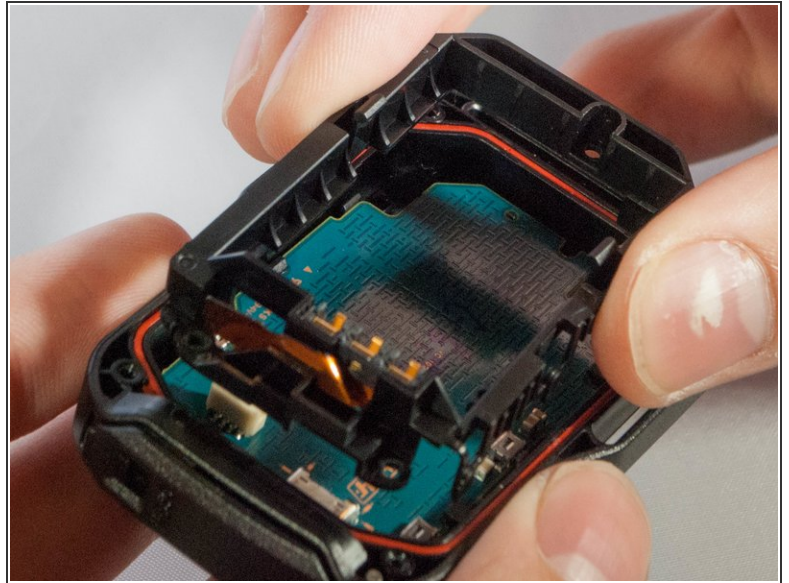
- Use a Phillips #00 screwdriver to remove the four (4) screws on the back of the device.
- If the screws strip or is previously stripped, refer to the [stripped screw repair guide](#).

Step 2



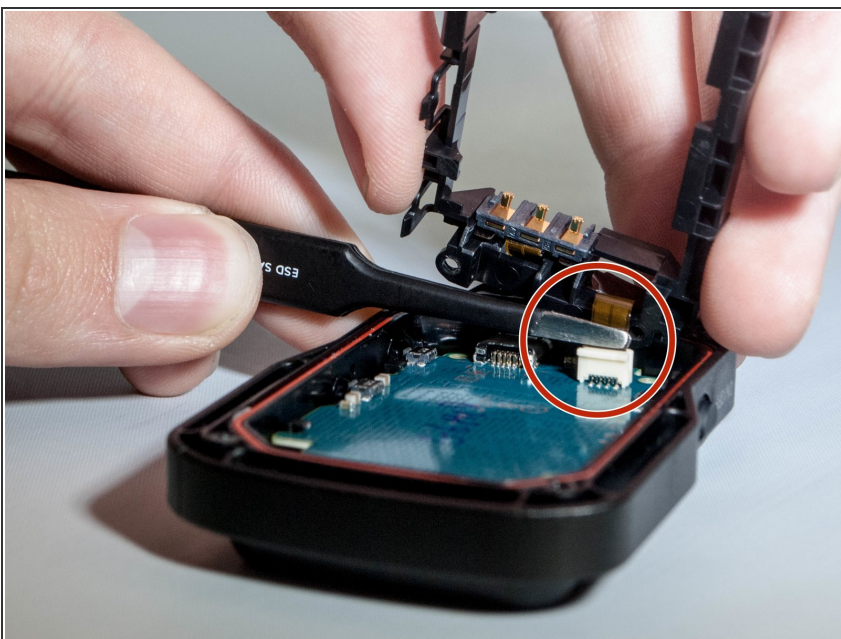
- Battery is the rectangular and silver object in the center of device.
- Remove battery with finger by prying at the rear.
- If unable to remove battery, pry out using spudger.

Step 3 — LCD Screen



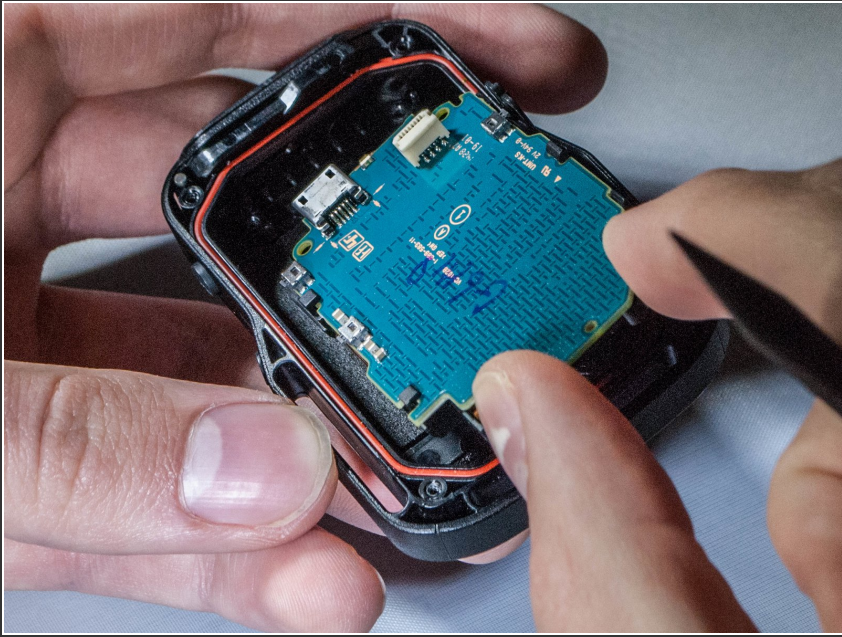
- Unscrew the 3 (three) screws holding the bracket in place.
 - Then remove the bracket by prying one end up.
- ⚠ Do not rip the ribbon cable connecting the bracket to the motherboard.

Step 4



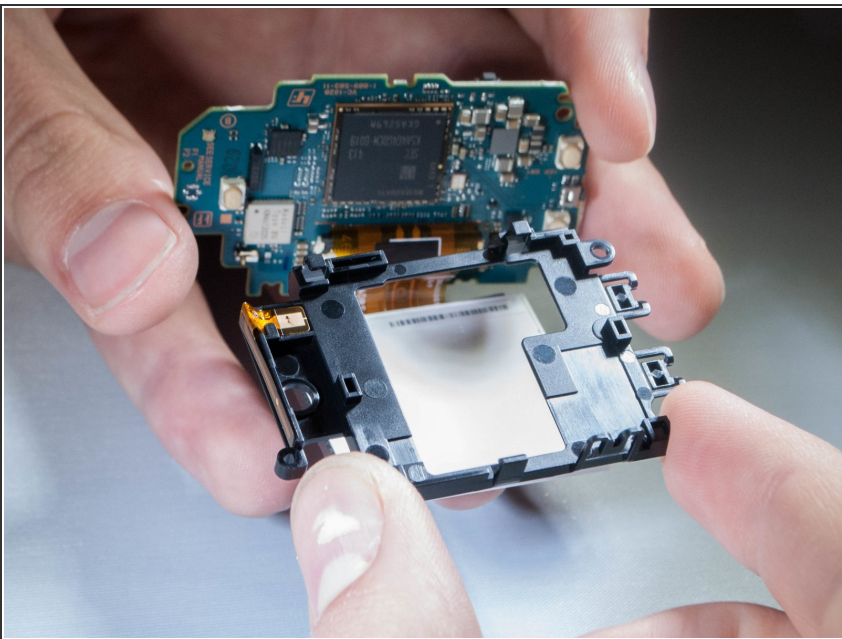
- With tweezers, unplug the ribbon cable from the white connector.

Step 5



- Remove motherboard from the device by pulling upward gently, with fingers or tweezers.

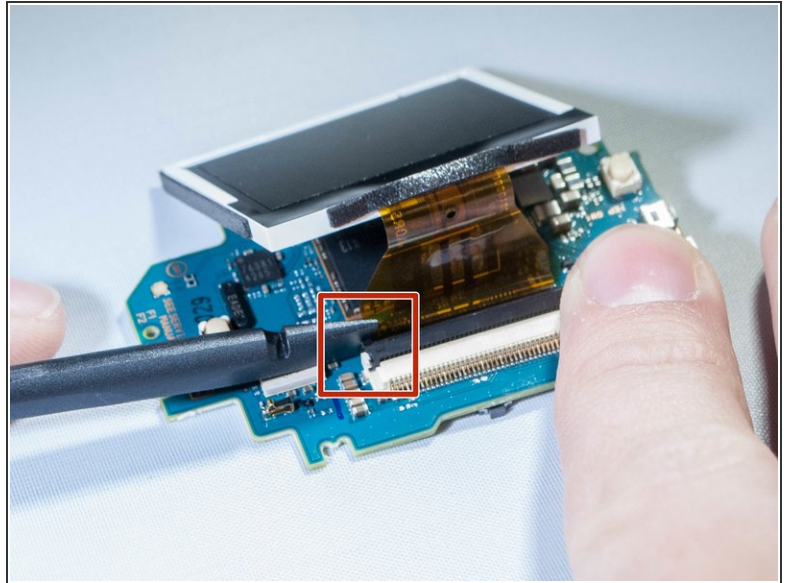
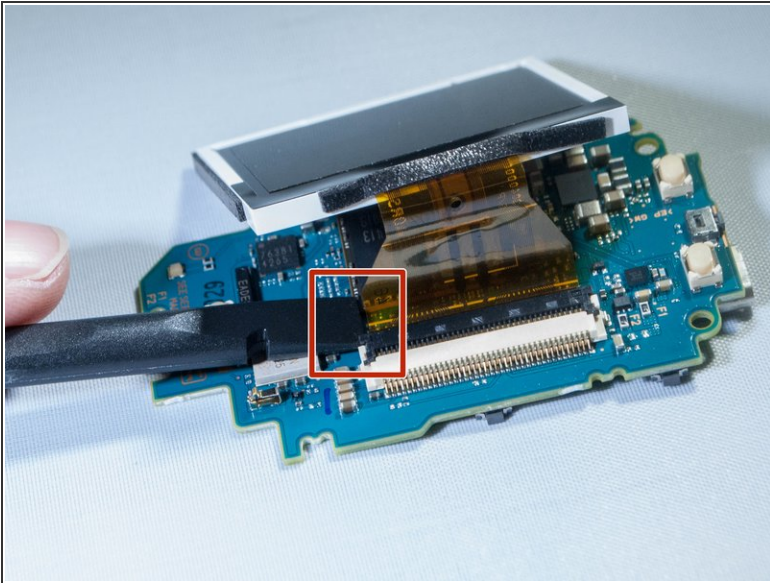
Step 6



- Gently push out on these two clips holding the LCD to the motherboard
- Once you have the first two off, ever so carefully, push the LCD towards the remaining two clips.

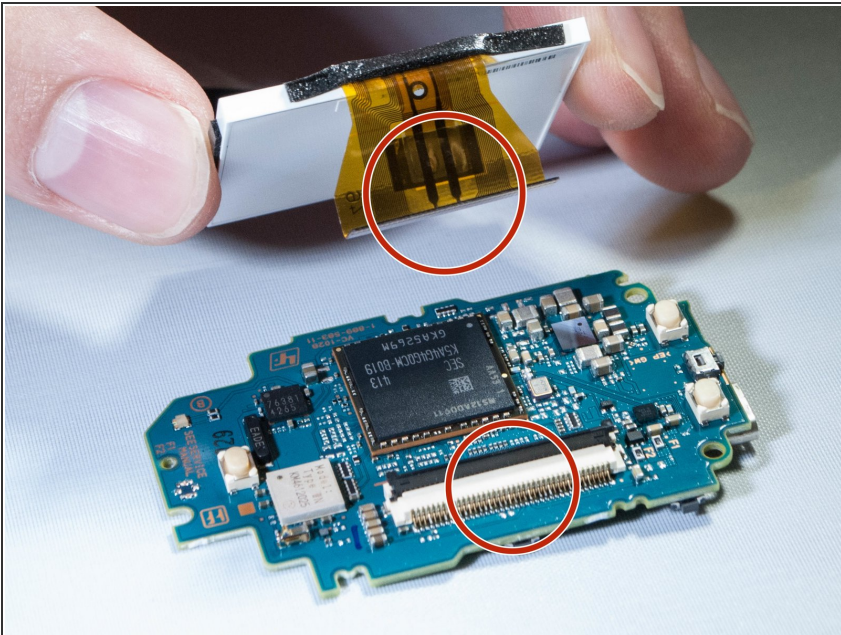
⚠ There is a ribbon cable underneath the LCD connecting it to the motherboard. Avoid sharp, sudden movements to prevent it from being damaged

Step 7



- Undo the ribbon cable attached between the motherboard and screen by prying up black tab which holds the cable, using spudger. (See pictures)

Step 8



- Remove the screen from the motherboard.

To reassemble your device, follow these instructions in reverse order.

This document was generated on 2019-09-22 04:17:21 AM (MST).

