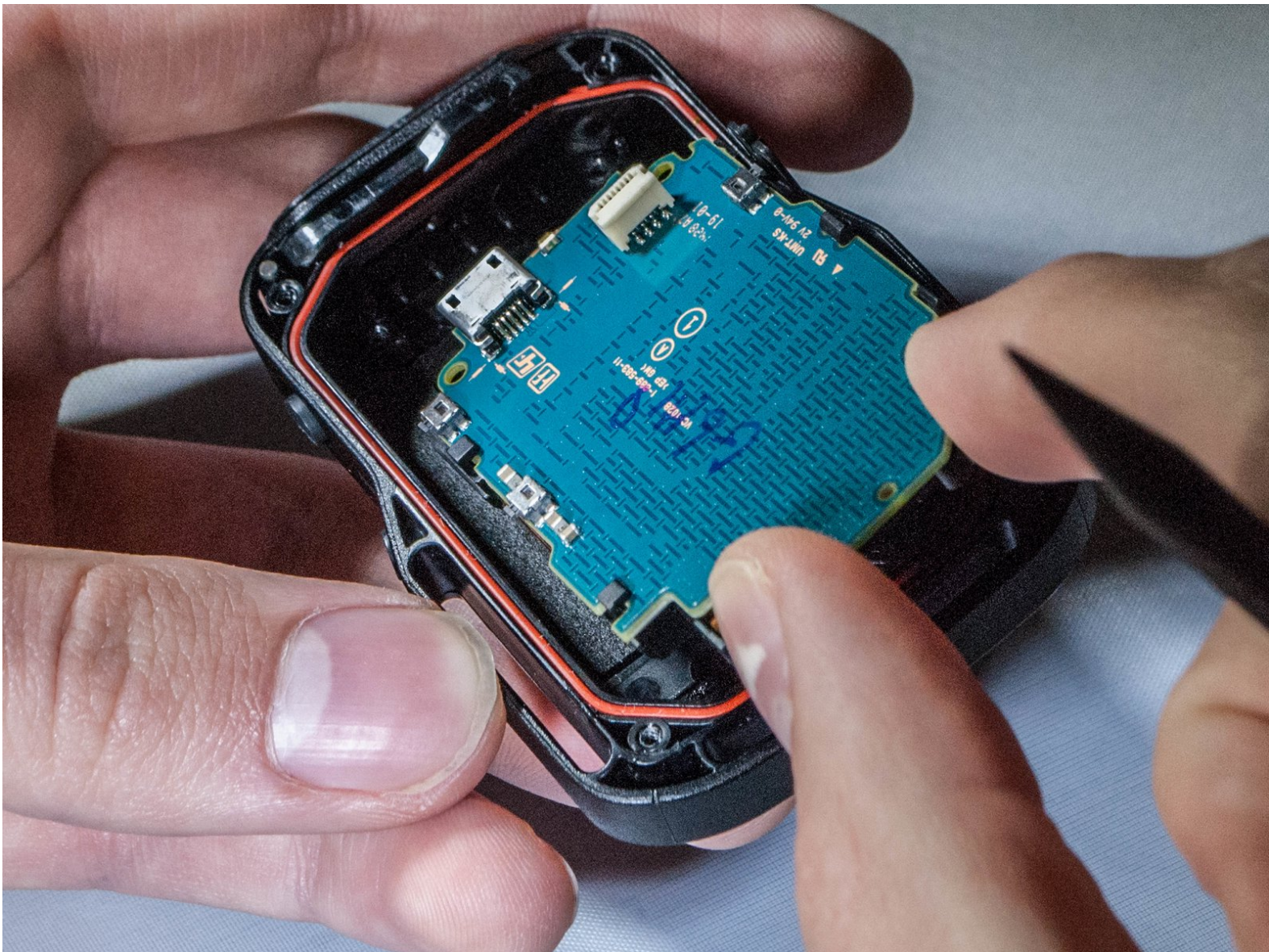




Sony RM-LVR1 Motherboard Replacement

Have attempted all previous troubleshooting guides but device is still "dead?" You may need to replace the motherboard.

Written By: Alexander Thomas



INTRODUCTION

This guide will teach you how to replace your motherboard in your Sony device.



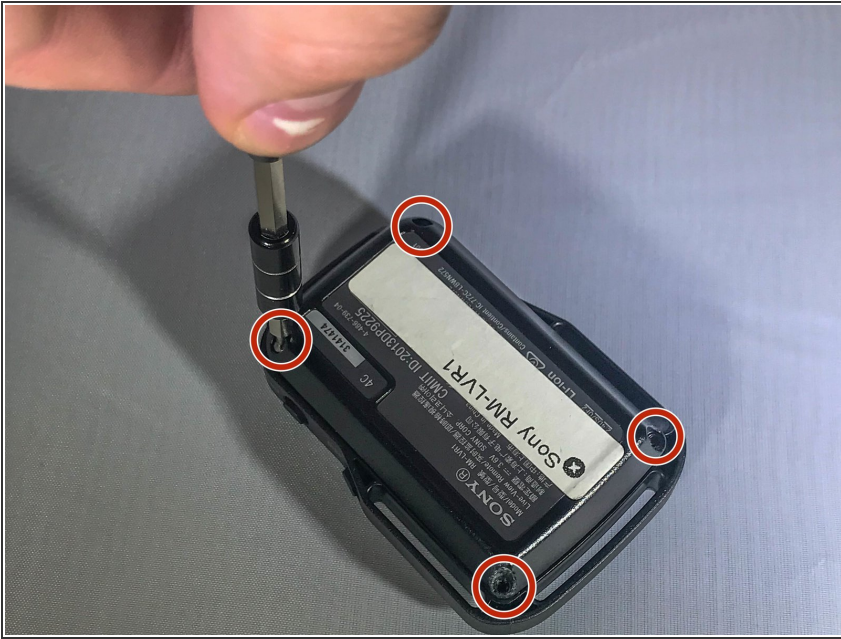
TOOLS:

- [Phillips #00 Screwdriver](#) (1)

Sss

- [Spudger](#) (1)
 - [Tweezers](#) (1)
-

Step 1 — Battery



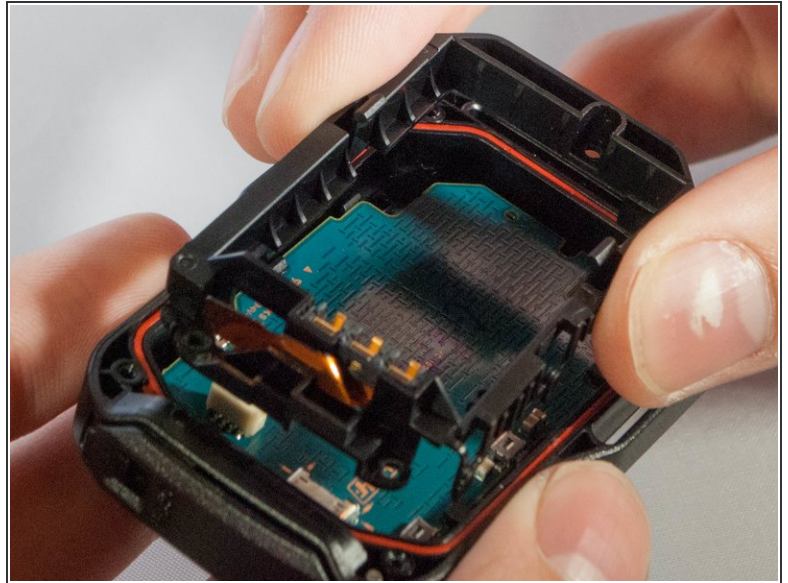
- Use a Phillips #00 screwdriver to remove the four (4) screws on the back of the device.
- If the screws strip or is previously stripped, refer to the [stripped screw repair guide](#).

Step 2



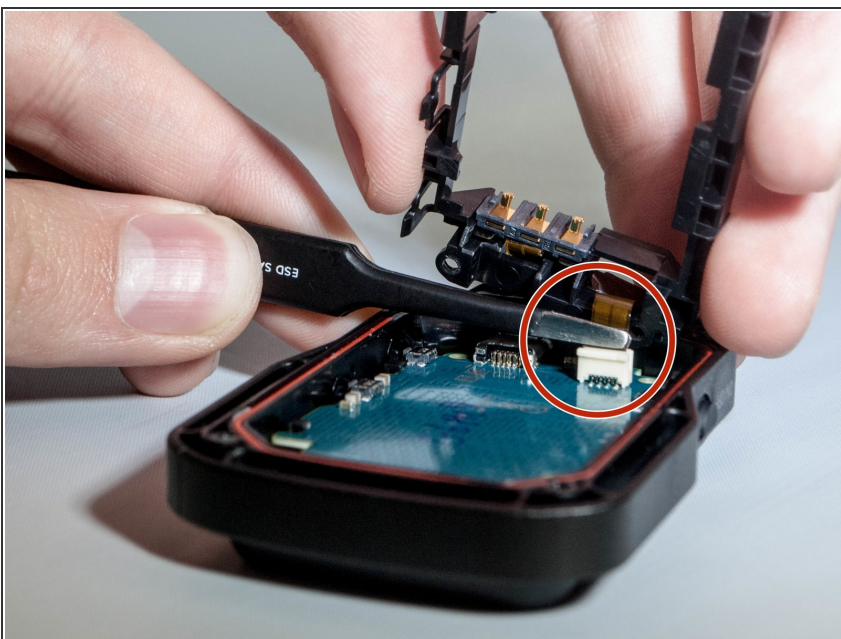
- Battery is the rectangular and silver object in the center of device.
- Remove battery with finger by prying at the rear.
- If unable to remove battery, pry out using spudger.

Step 3 — LCD Screen



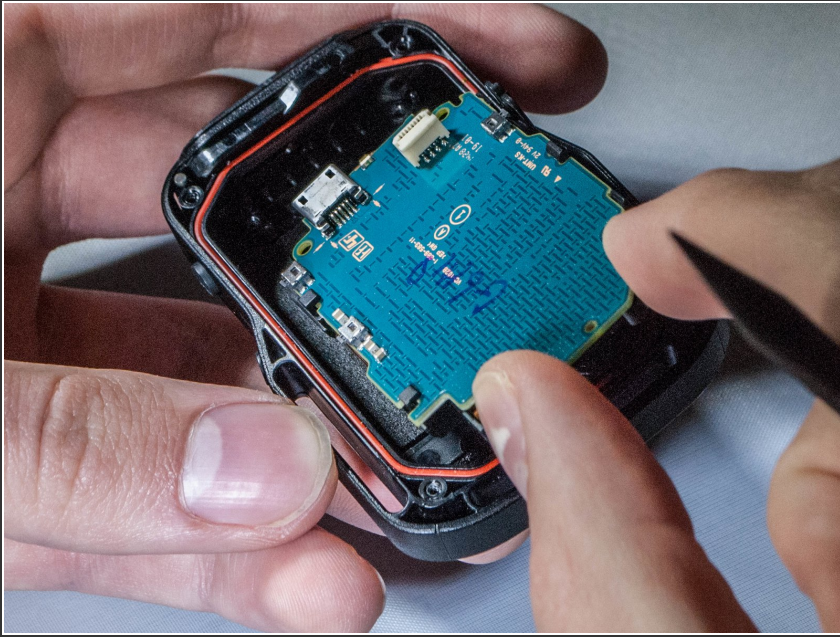
- Unscrew the 3 (three) screws holding the bracket in place.
 - Then remove the bracket by prying one end up.
- ⚠ Do not rip the ribbon cable connecting the bracket to the motherboard.

Step 4



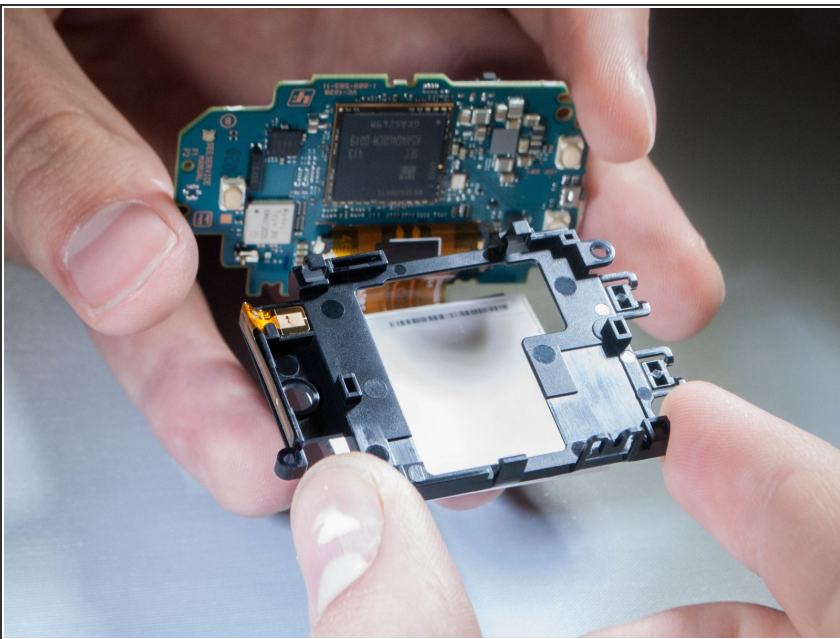
- With tweezers, unplug the ribbon cable from the white connector.

Step 5



- Remove motherboard from the device by pulling upward gently, with fingers or tweezers.

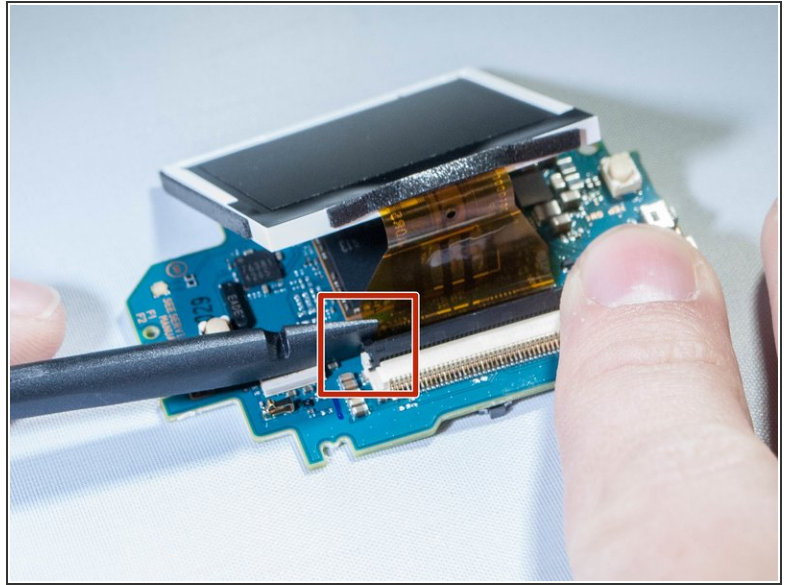
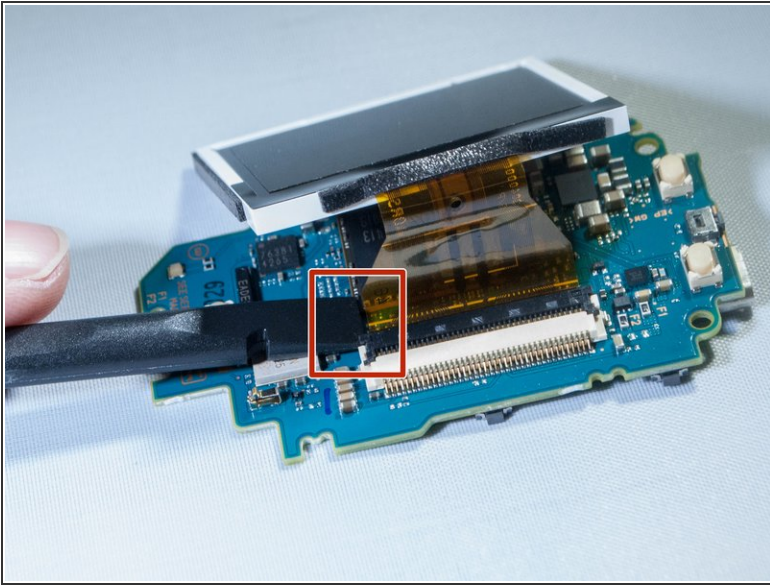
Step 6



- Gently push out on these two clips holding the LCD to the motherboard
- Once you have the first two off, ever so carefully, push the LCD towards the remaining two clips.

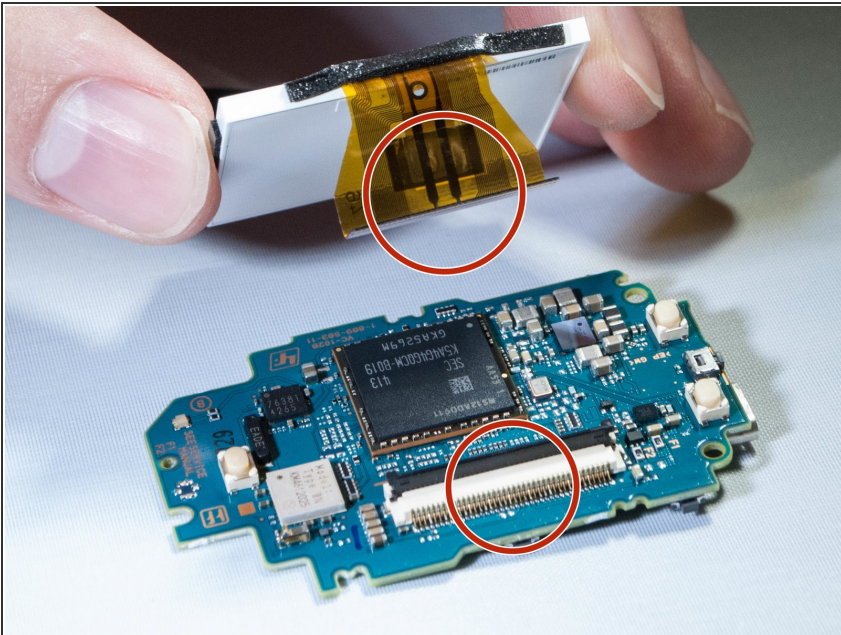
⚠ There is a ribbon cable underneath the LCD connecting it to the motherboard. Avoid sharp, sudden movements to prevent it from being damaged

Step 7



- Undo the ribbon cable attached between the motherboard and screen by prying up black tab which holds the cable, using spudger. (See pictures)

Step 8



- Remove the screen from the motherboard.

To reassemble your device, follow these instructions in reverse order.

This document was generated on 2019-09-22 04:17:35 AM (MST).

