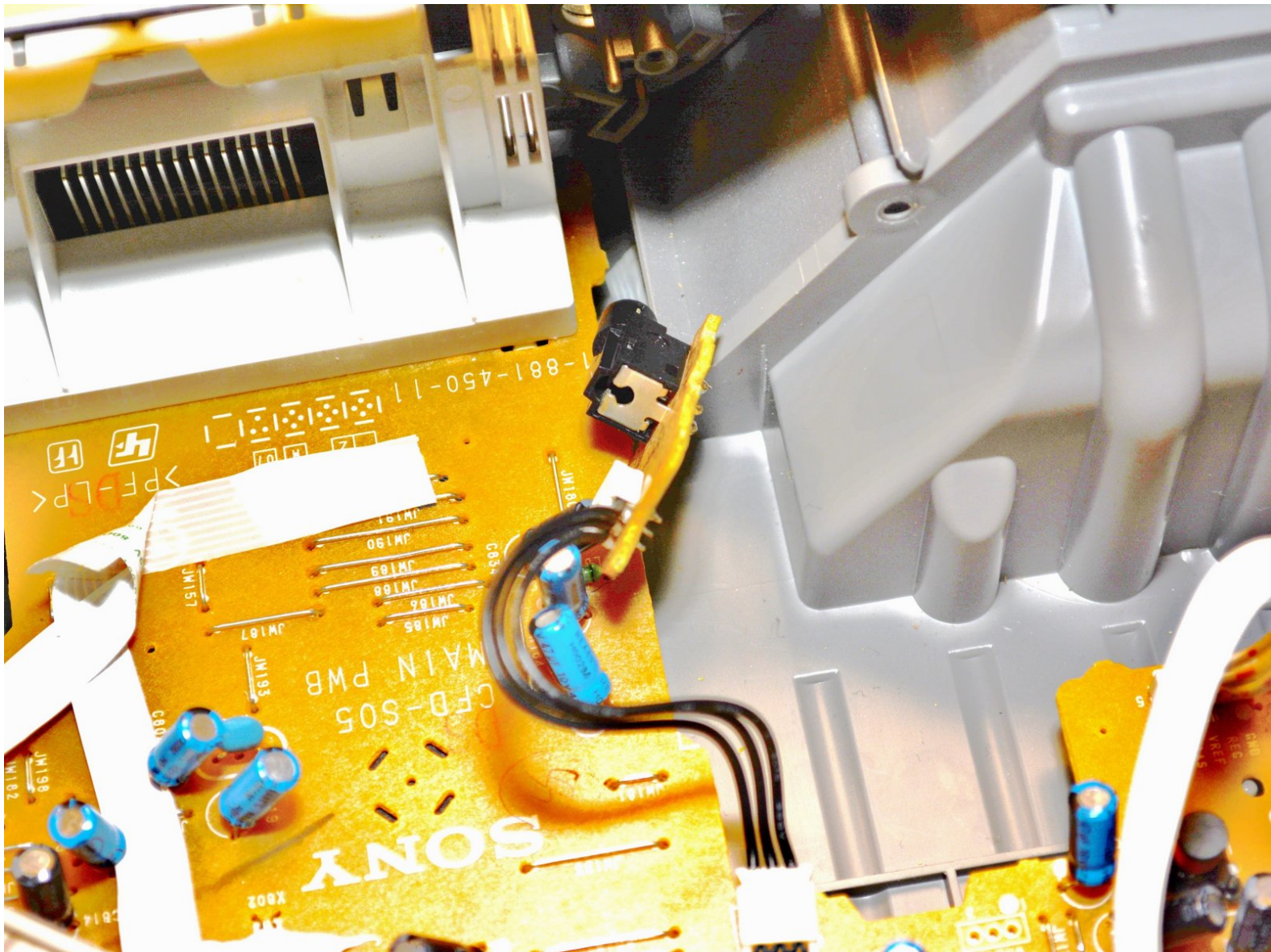




Sony Radio CD player and cassette player CFD-S05 Audio in Jack Replacement

If the audio in jack does not work this guide will help to replace it.

Written By: Ian Nussman



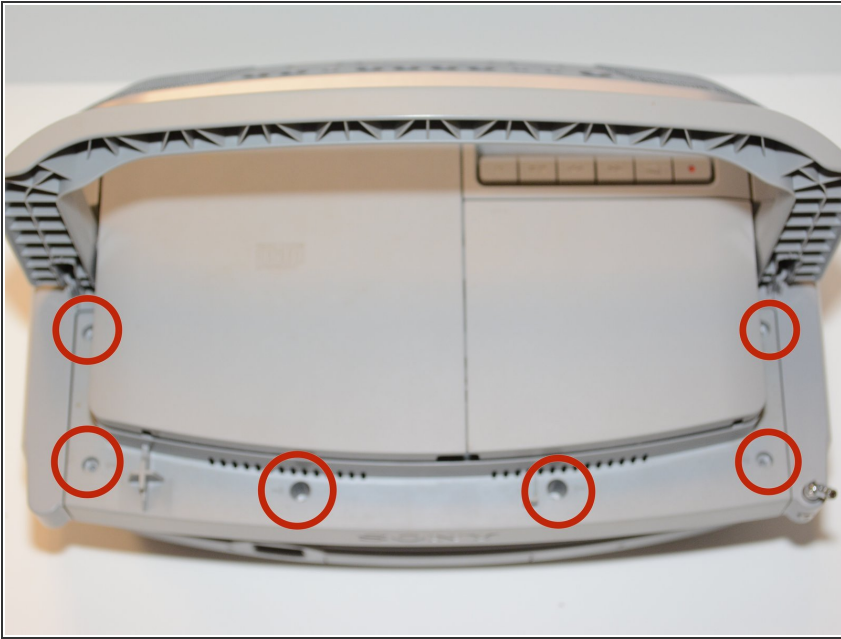
**TOOLS:**

- [Universal Drive Adapter](#) (1)

**PARTS:**

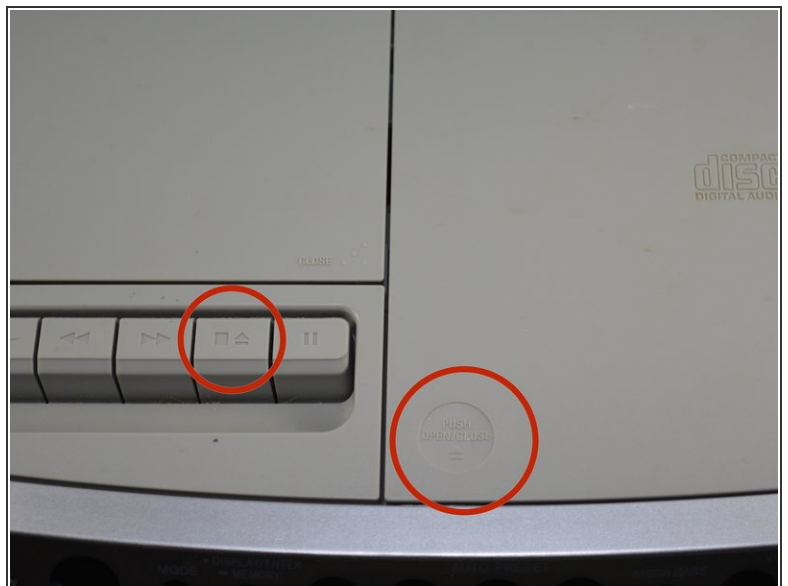
- [audio in jack](#) (1)

Step 1 — Sony Radio Model CFD S05 Prerequisite steps Replacement



- Unscrew the screws on the top of the radio.

Step 2



- Open the CD and cassette doors and remove the screws in the compartments.
- ❗ To open the CD door push on the bottom left corner of the CD door. To open the cassette door push the button that is to the left of the pause button.

Step 3



- Flip the radio upside down and remove the battery cover. Unscrew the one screw below the batteries.

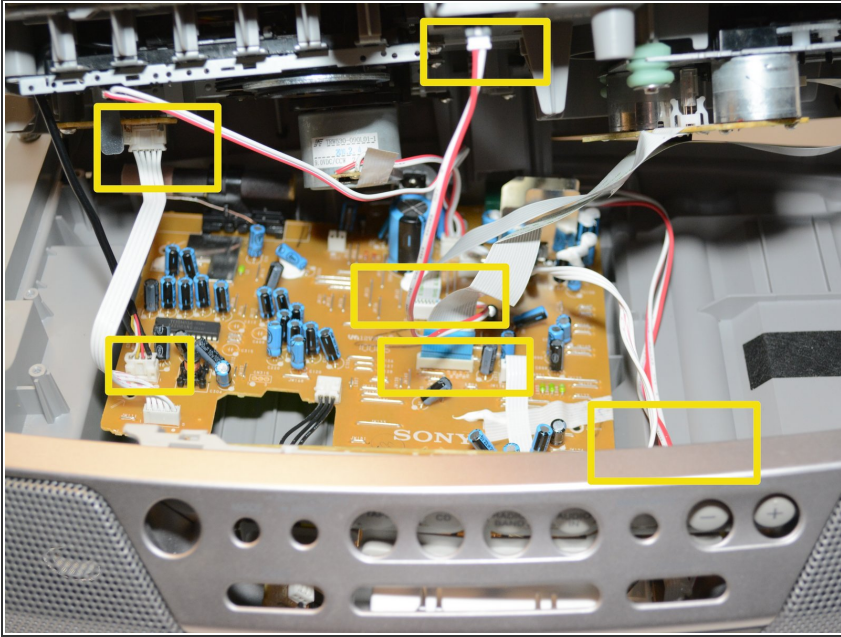
Step 4



- Remove the top of the radio enough to access the wires for removal.

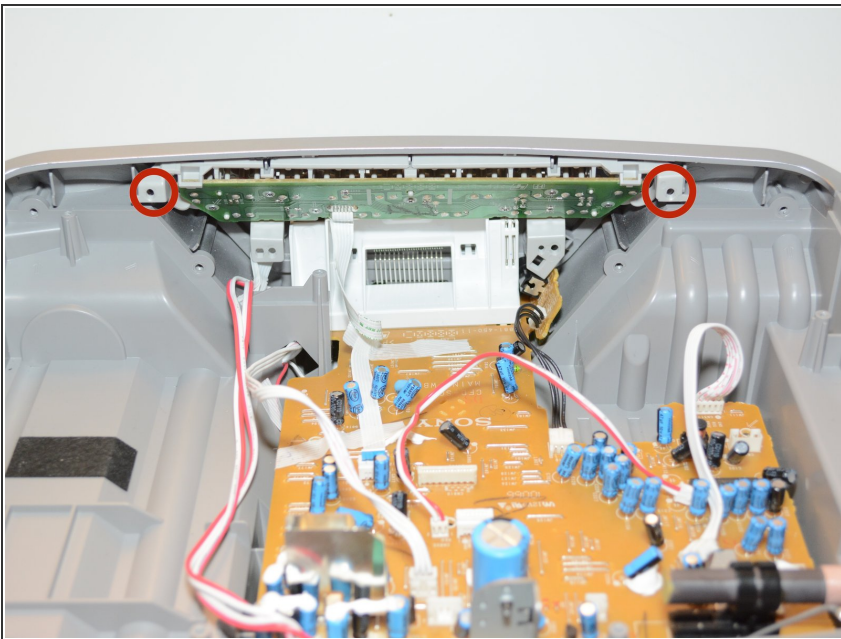
⚠ Do not forcefully remove the whole top piece of the radio! There will be wires connected to the top cover and circuit board.

Step 5



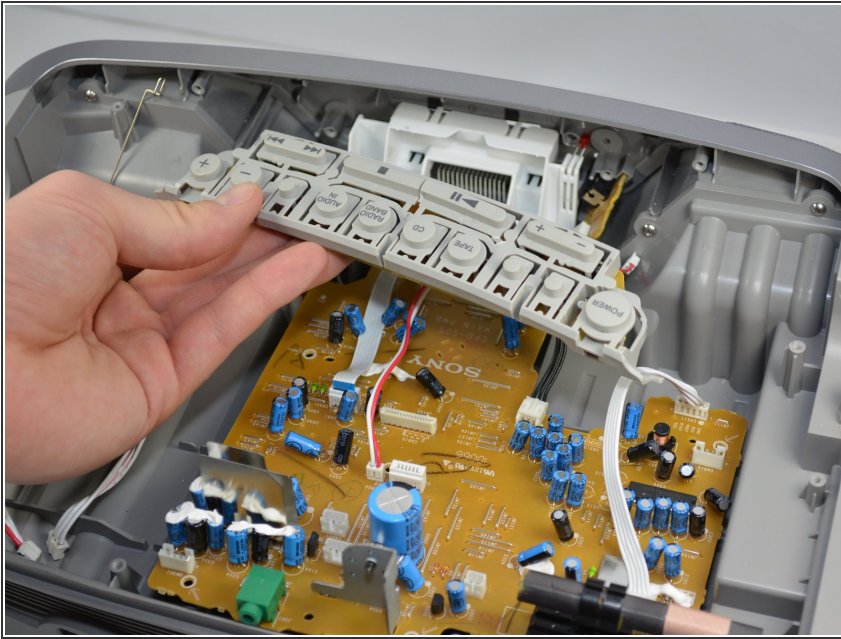
- Remove all of the wires that are connected to both the circuit board and the underside of the top of the radio by pulling them where they are connected
- ⓘ This should include three sets of red and white wires, one set of white wires, one set of black wires, and two ribbon wires. Some cannot be disconnected from the top piece of the radio. Disconnect these plugs from the circuit board.

Step 6 — Audio in Jack



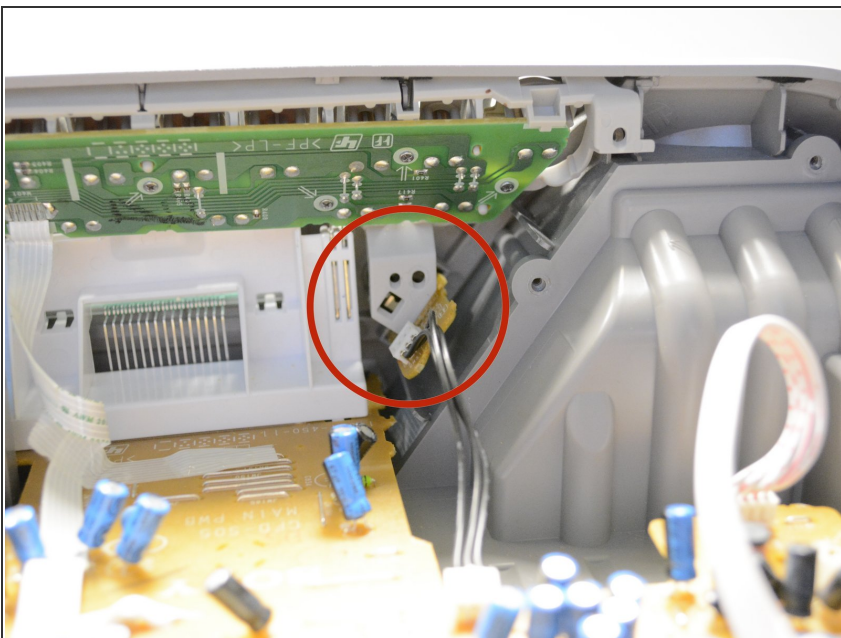
- Unscrew the screws on the top right and top left of the back side of the buttons of the radio.

Step 7



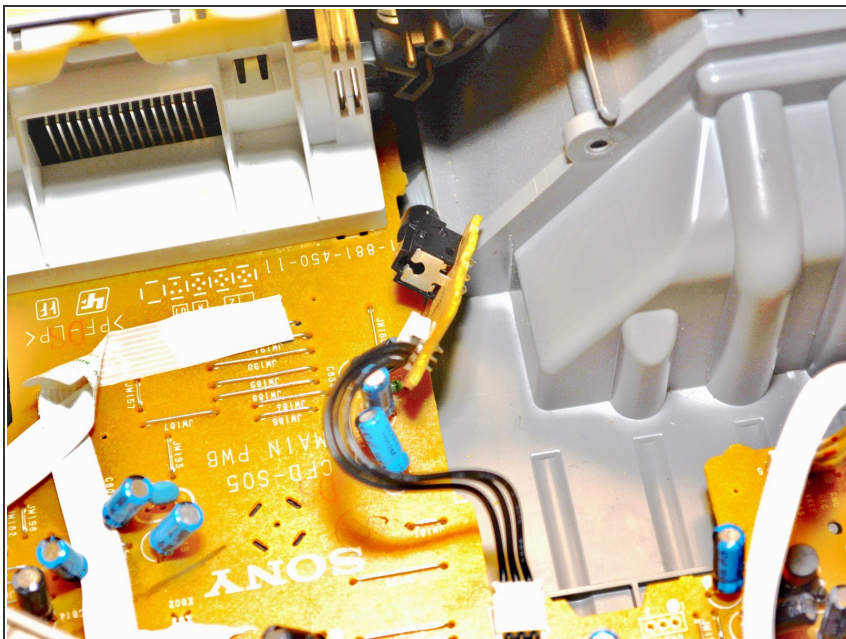
- Pull out the buttons of the radio from the inside.

Step 8



- Pull out the audio in jack which is located on the right side of the radio directly below where the buttons are.

Step 9



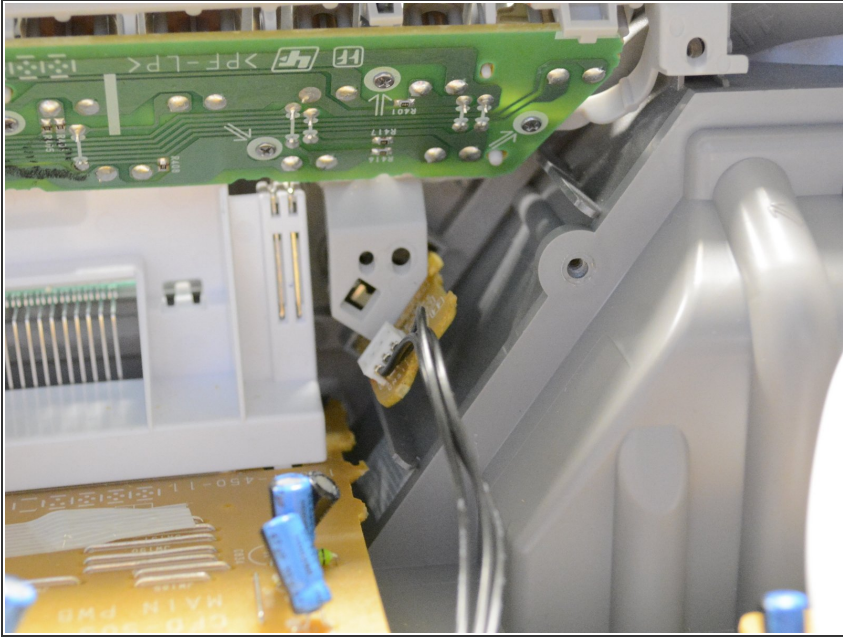
- Remove the audio in jack from the circuit board by pulling on the wires where they are connected to the board.

Step 10



- Connect the new audio in jack wires to the circuit board where the old one used to be.

Step 11



- Insert the new audio in jack into the hole on the back side of the front face of the radio.

To reassemble your device, follow these instructions in reverse order.