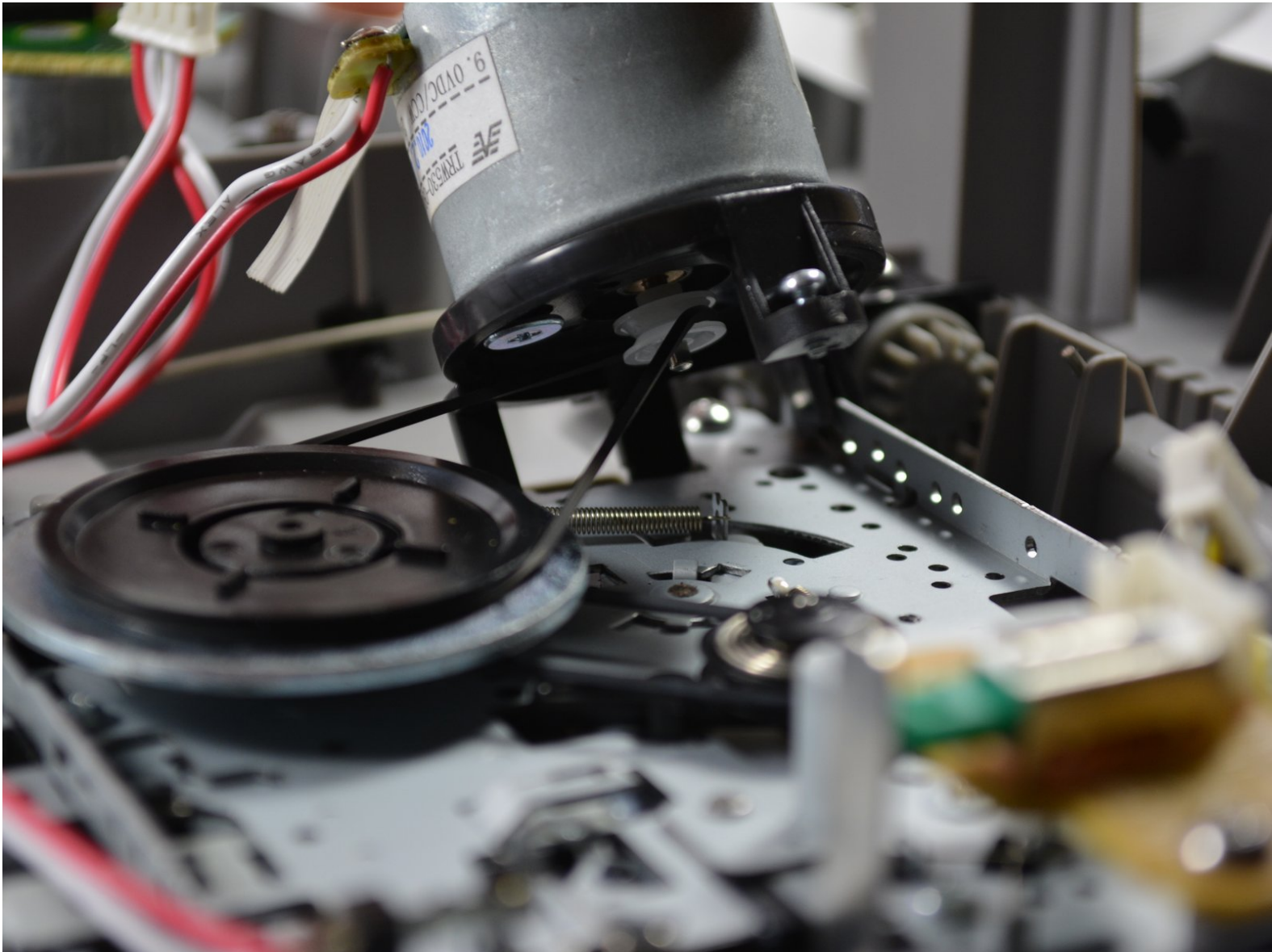




Sony Radio CD player and cassette player CFD-S05 Belt for the Tape Motor Replacement

Replacing the belt that is attached to the motor that runs the tape deck

Written By: Ian Nussman



INTRODUCTION

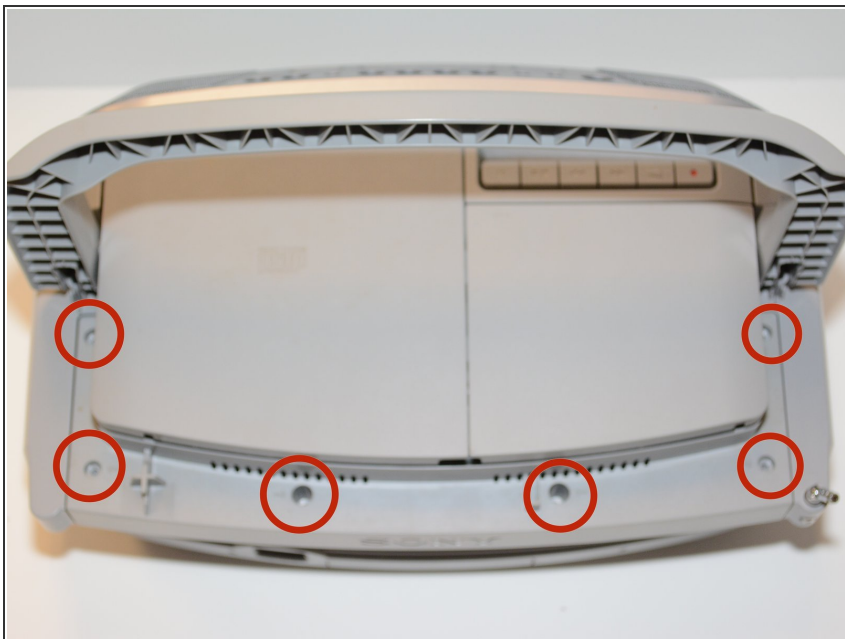
Outline what you are going to teach someone how to do.



TOOLS:

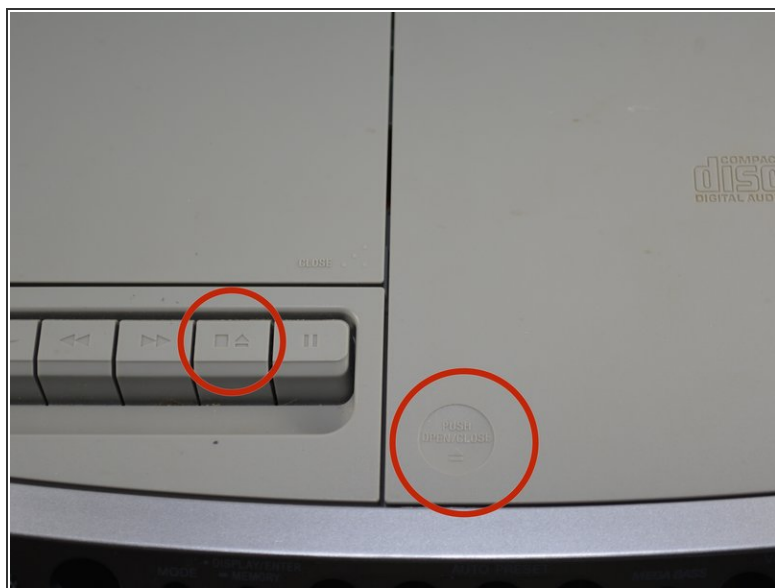
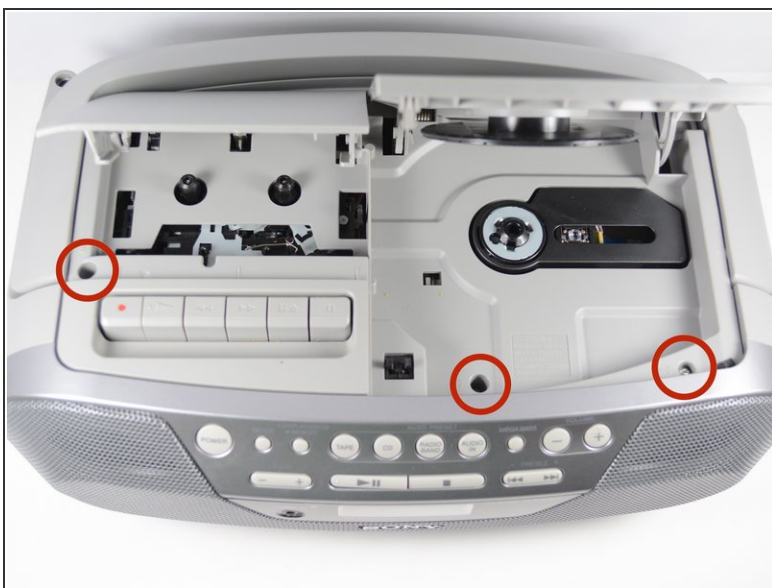
- [64 Bit Driver Kit](#) (1)
-

Step 1 — Sony Radio Model CFD S05 Prerequisite steps Replacement



- Unscrew the screws on the top of the radio.

Step 2



- Open the CD and cassette doors and remove the screws in the compartments.
- ❗ To open the CD door push on the bottom left corner of the CD door. To open the cassette door push the button that is to the left of the pause button.

Step 3



- Flip the radio upside down and remove the battery cover. Unscrew the one screw below the batteries.

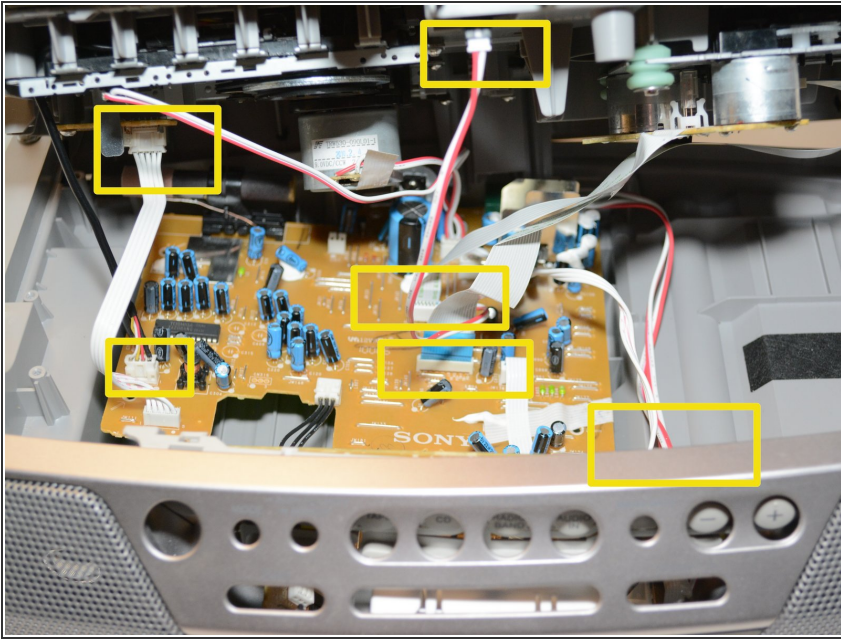
Step 4



- Remove the top of the radio enough to access the wires for removal.

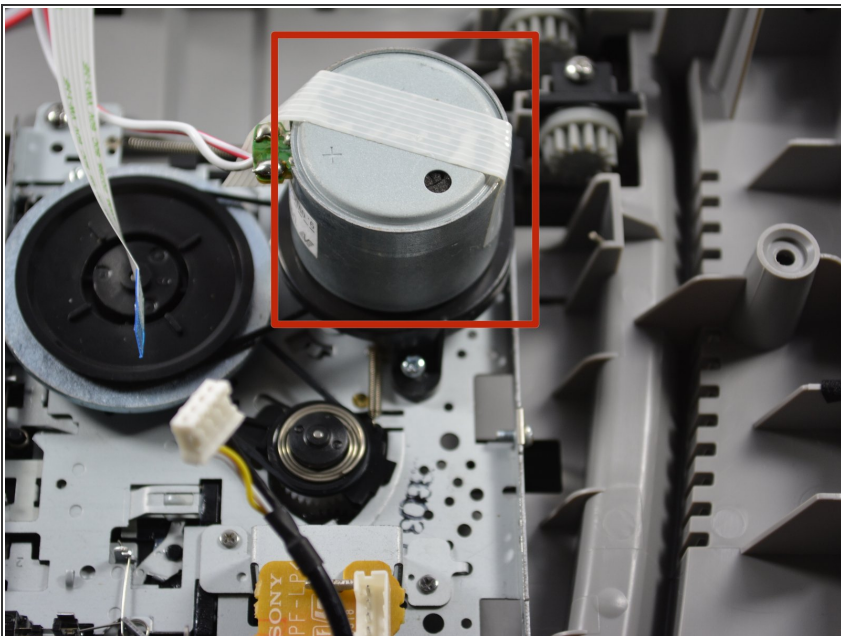
⚠ Do not forcefully remove the whole top piece of the radio! There will be wires connected to the top cover and circuit board.

Step 5



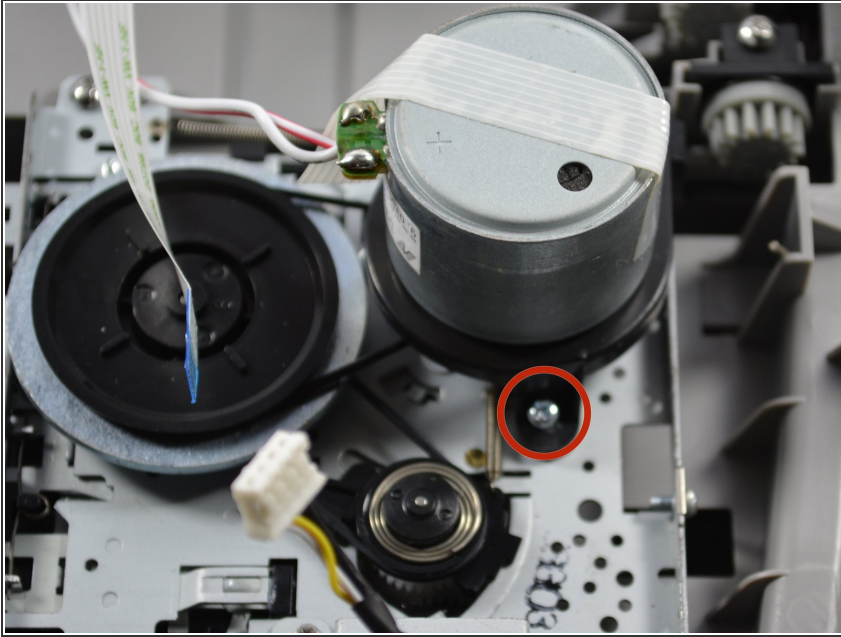
- Remove all of the wires that are connected to both the circuit board and the underside of the top of the radio by pulling them where they are connected
- ⓘ This should include three sets of red and white wires, one set of white wires, one set of black wires, and two ribbon wires. Some cannot be disconnected from the top piece of the radio. Disconnect these plugs from the circuit board.

Step 6 — Belt for the Tape Motor



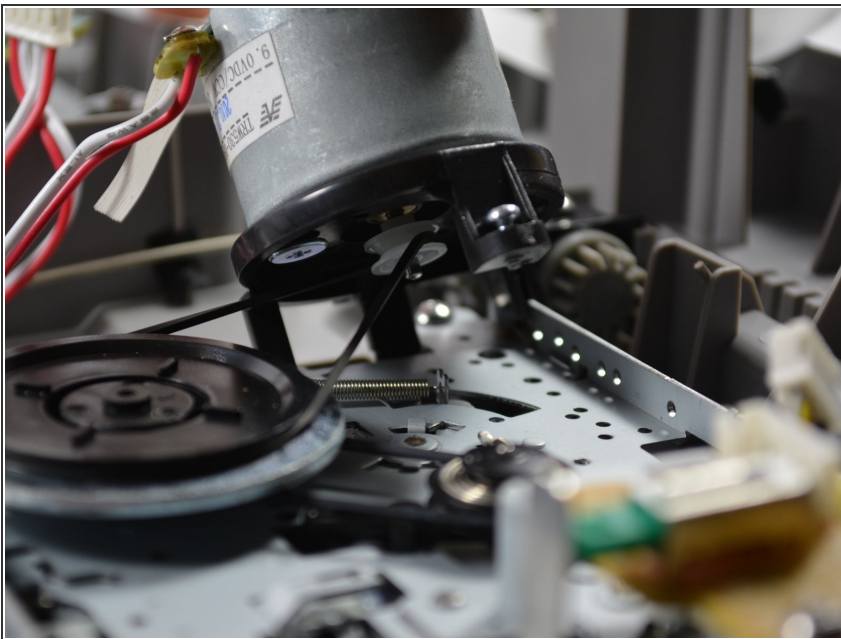
- Locate the motor of the radio on the underside of the top of the radio.

Step 7



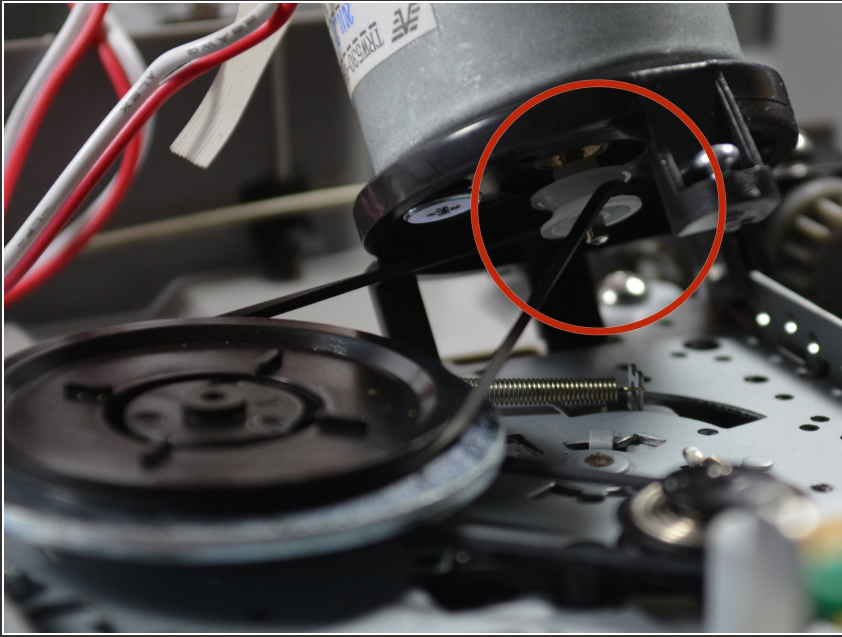
- Unscrew the screw holding the motor to the top of the radio.

Step 8



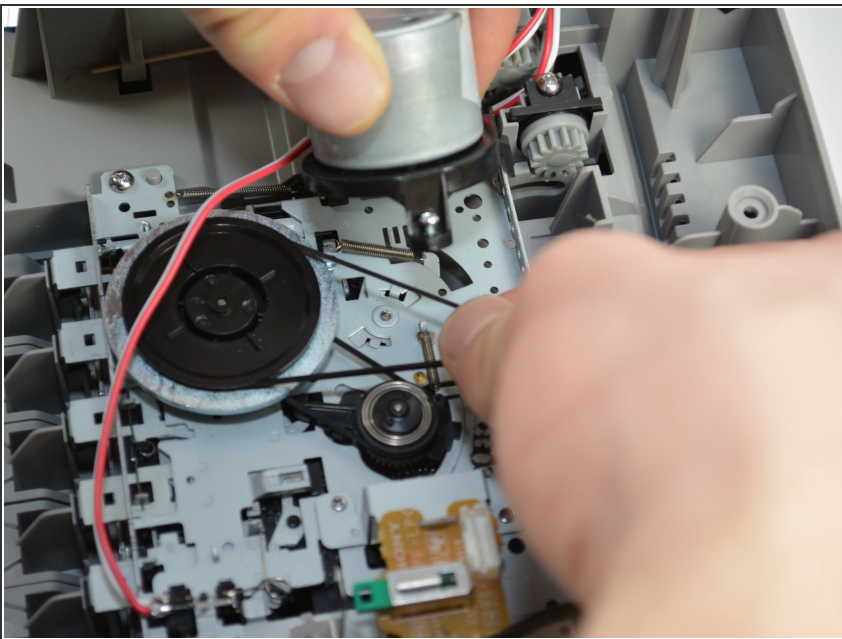
- Lift up the motor.
- ⚠ Don't lift too high because the motor stand will break.

Step 9



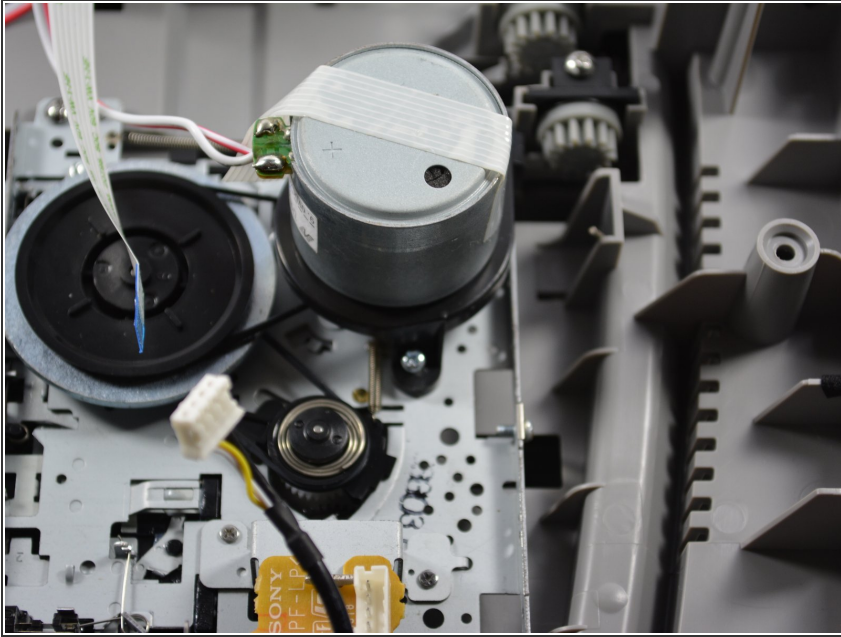
- Unhook the larger band from under the motor and remove it.

Step 10



- Replace the band by hooking it beneath the motor.

Step 11



- Push the motor back down and screw it into place.

To reassemble your device, follow these instructions in reverse order.