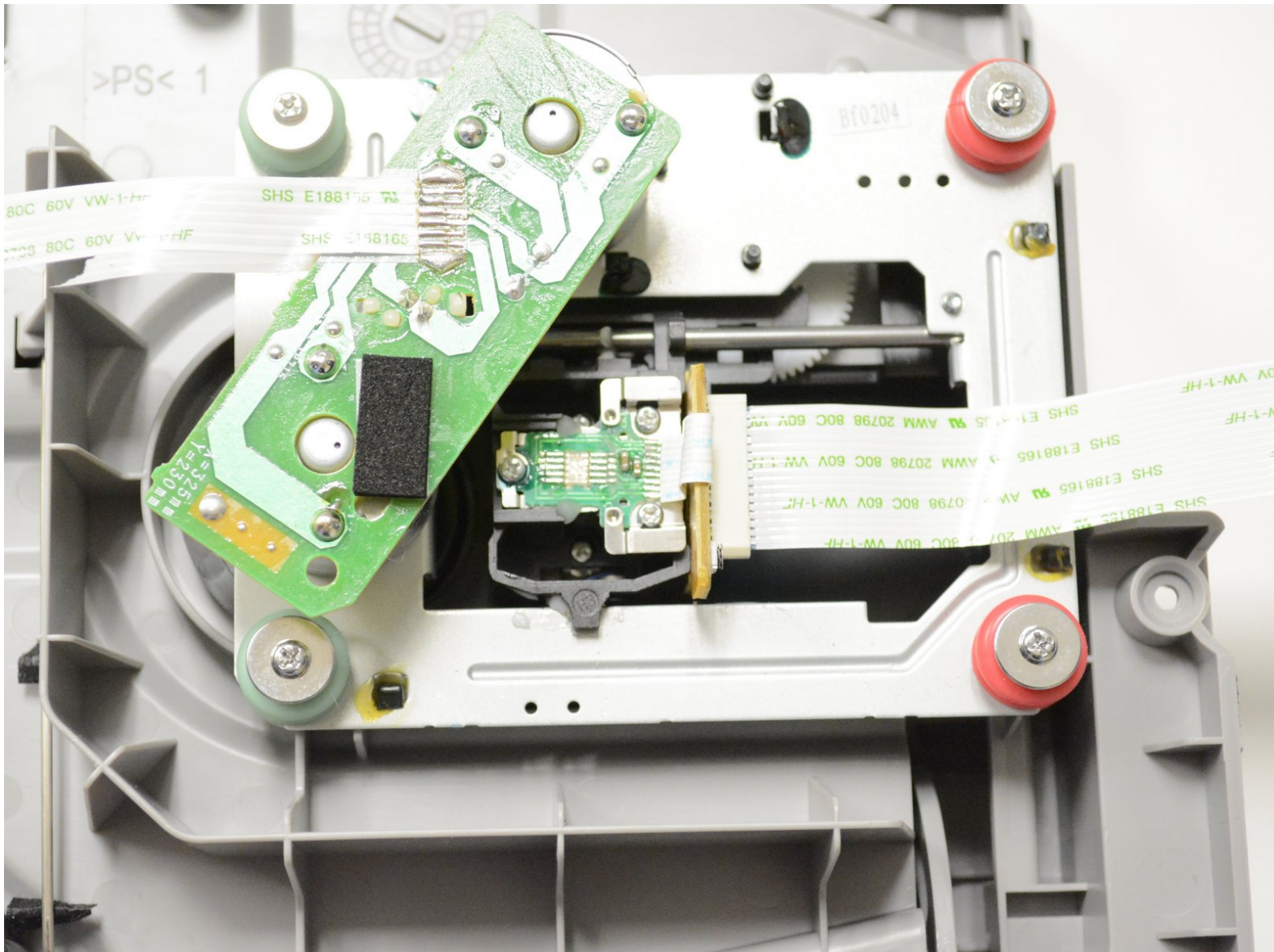




Sony Radio CD player and cassette player CFD-S05 Optical Pickup Unit Replacement

Replacing the optical pickup unit that reads the CDs.

Written By: Ian Nussman

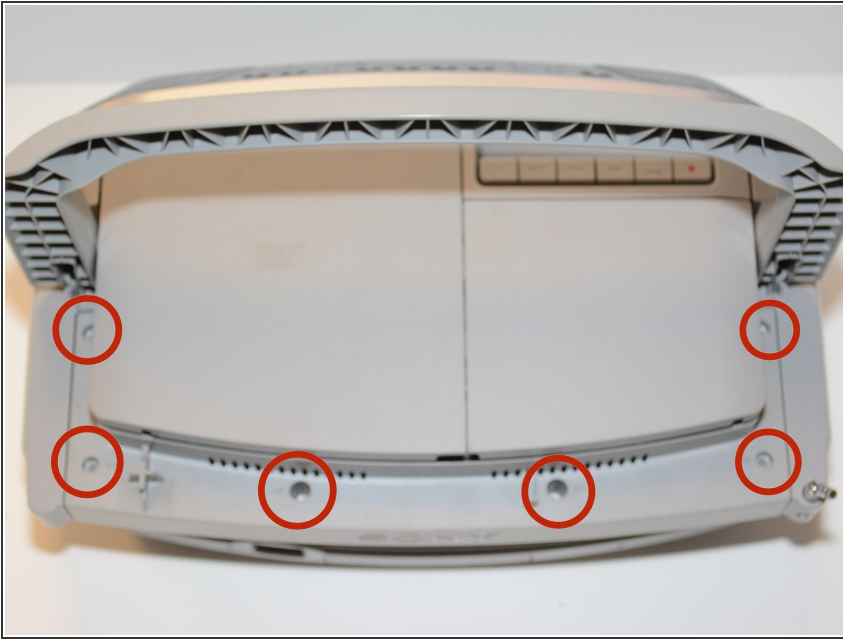




TOOLS:

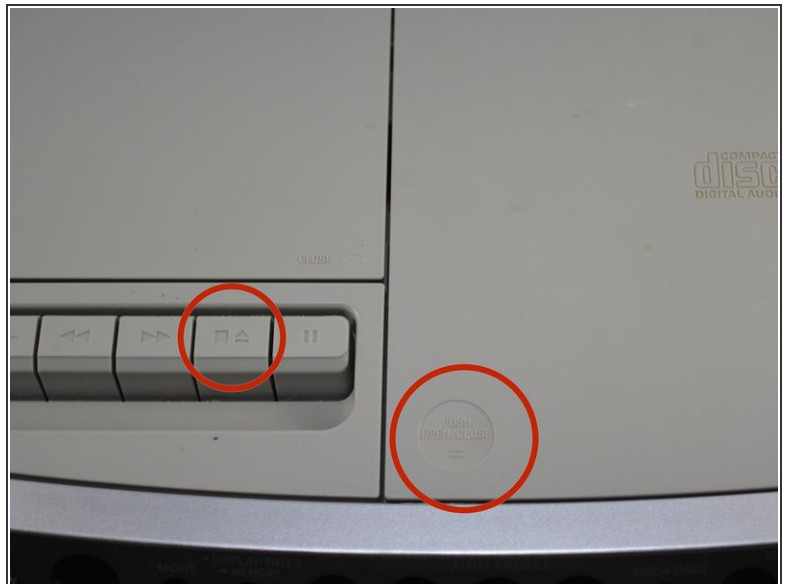
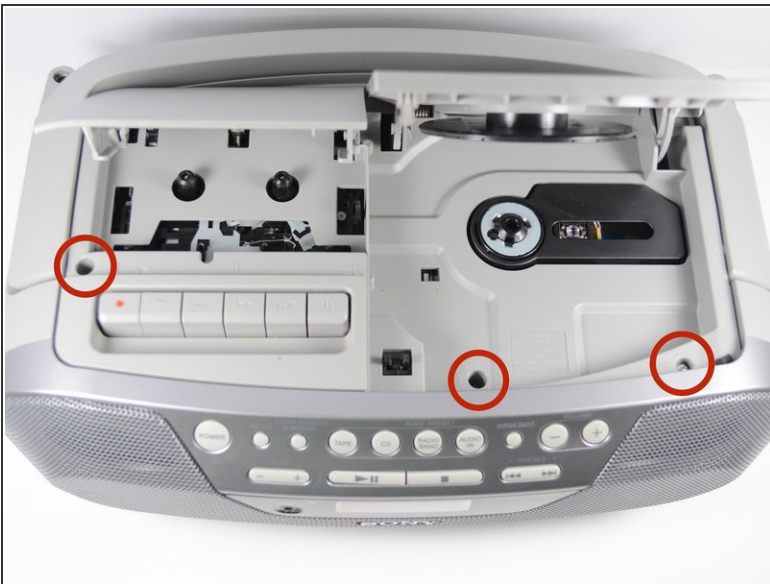
- [Pro Tech Toolkit](#) (1)
 - [Universal Drive Adapter](#) (1)
-

Step 1 — Sony Radio Model CFD S05 Prerequisite steps Replacement



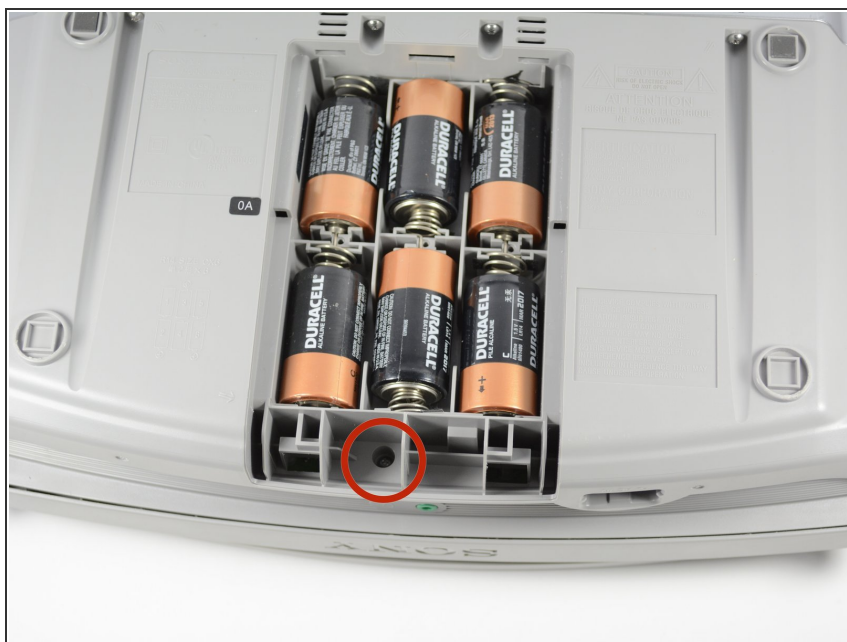
- Unscrew the screws on the top of the radio.

Step 2



- Open the CD and cassette doors and remove the screws in the compartments.
- ❗ To open the CD door push on the bottom left corner of the CD door. To open the cassette door push the button that is to the left of the pause button.

Step 3



- Flip the radio upside down and remove the battery cover. Unscrew the one screw below the batteries.

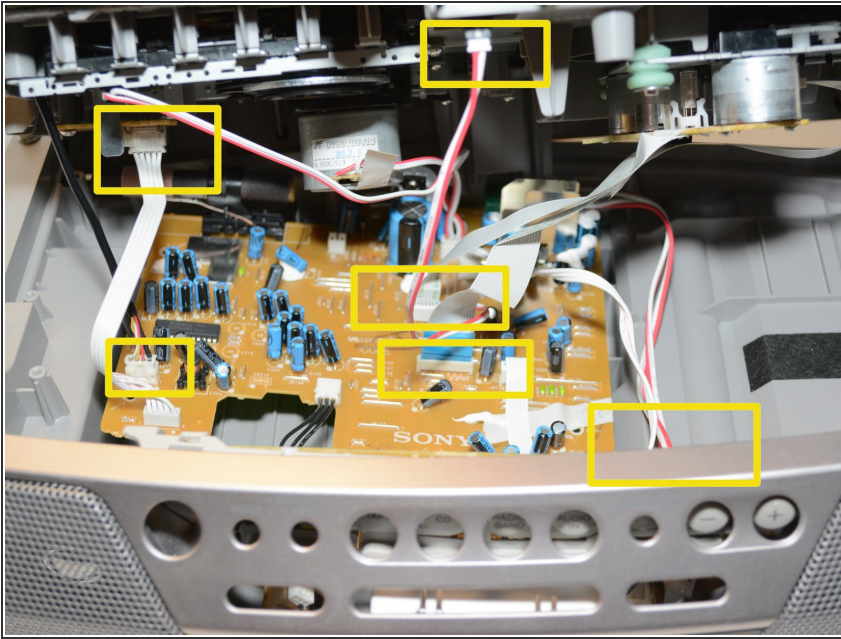
Step 4



- Remove the top of the radio enough to access the wires for removal.

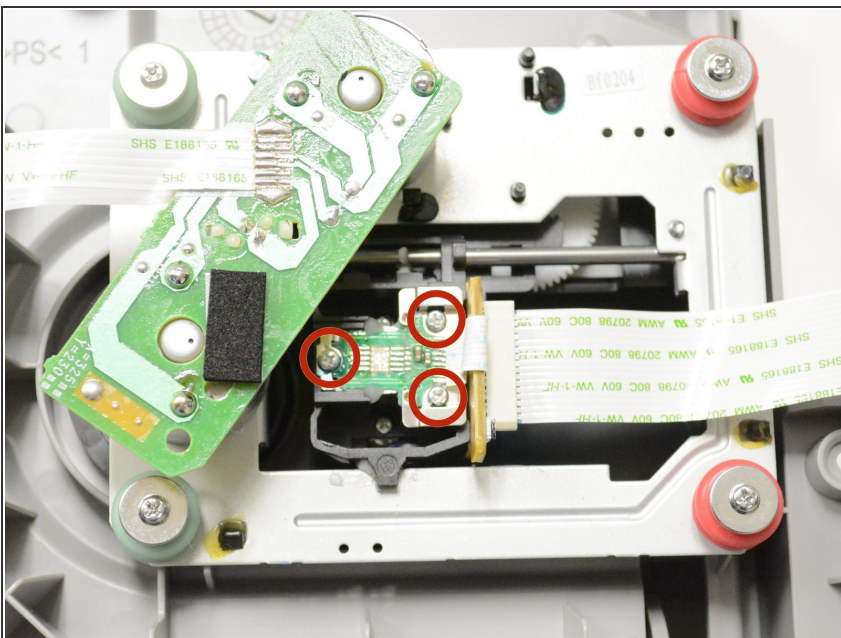
⚠ Do not forcefully remove the whole top piece of the radio! There will be wires connected to the top cover and circuit board.

Step 5



- Remove all of the wires that are connected to both the circuit board and the underside of the top of the radio by pulling them where they are connected
- ❗ This should include three sets of red and white wires, one set of white wires, one set of black wires, and two ribbon wires. Some cannot be disconnected from the top piece of the radio. Disconnect these plugs from the circuit board.

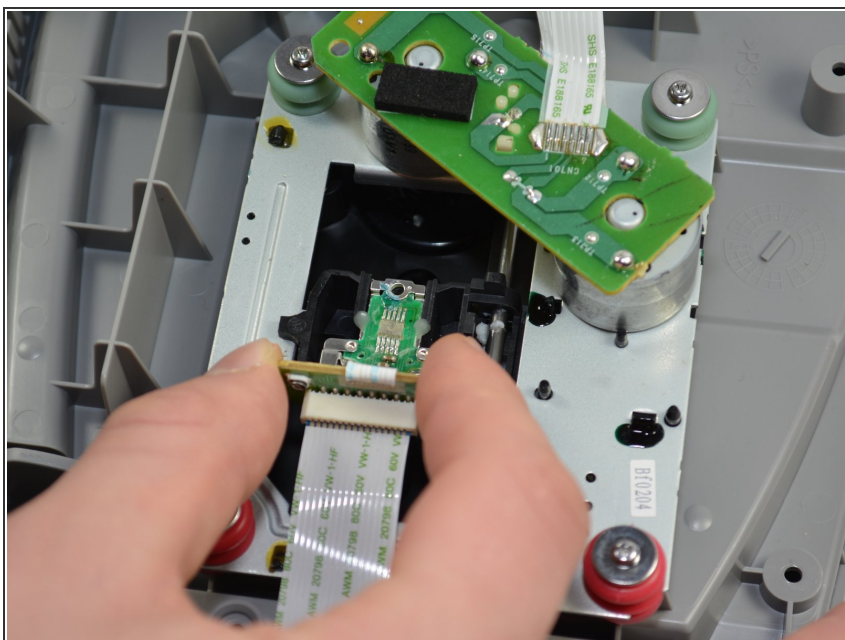
Step 6 — Optical Pickup Unit



- On the underside of the cover, unscrew the three screws on the optical pick up unit which is located

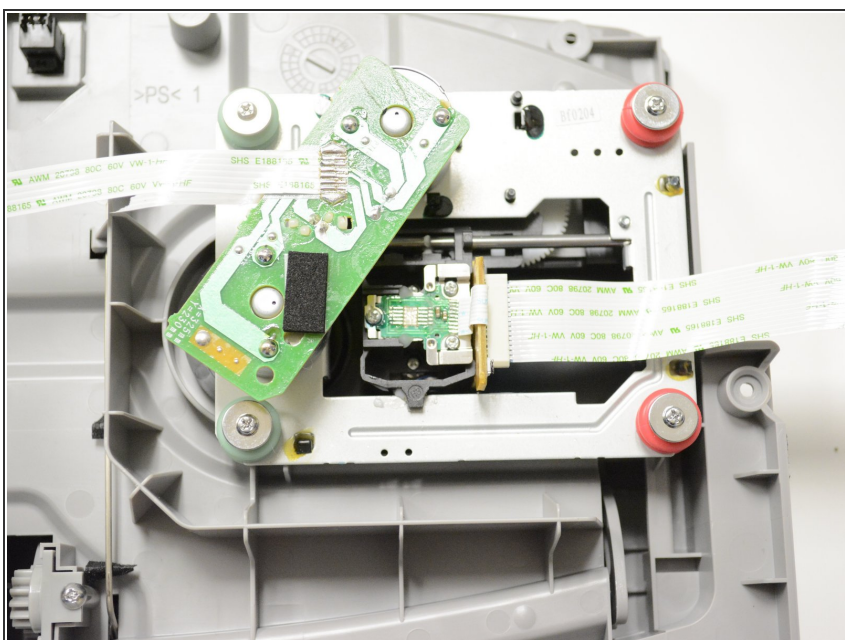
directly beneath the CD player on the underside of the top face of the radio.

Step 7



- Insert the new optical pick up unit.
- Make sure it is aligned properly.

Step 8



- Screw in the new optical pick up unit.

To reassemble your device, follow these instructions in reverse order.