



Sony Reader Touch Edition PRS-600 Back Cover Replacement

This guide shows how to replace the back panel of the device

Written By: Terrika Ngobili





TOOLS:

- [Phillips #000 Screwdriver](#) (1)
-

Step 1 — Back Panel



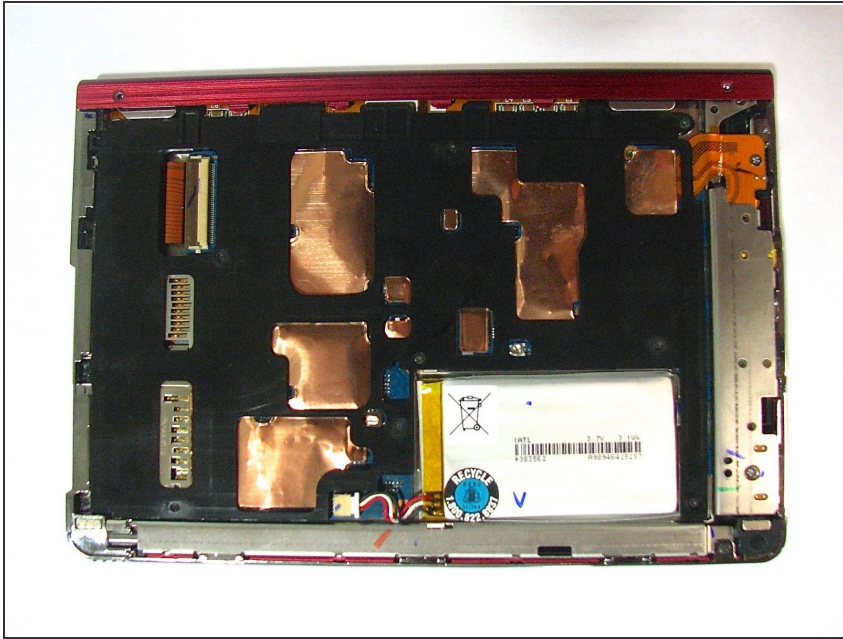
- Using the Phillips head screwdriver PH000, remove the two 1.4 mm screws that are located on the backside of the device.

Step 2



- Slide the back cover off by pushing it to the left, away from the side that held the screws.
- Remove the cover.

Step 3



- This is what the device should look like once the back cover panel has been removed.

To reassemble your device, follow these instructions in reverse order.