

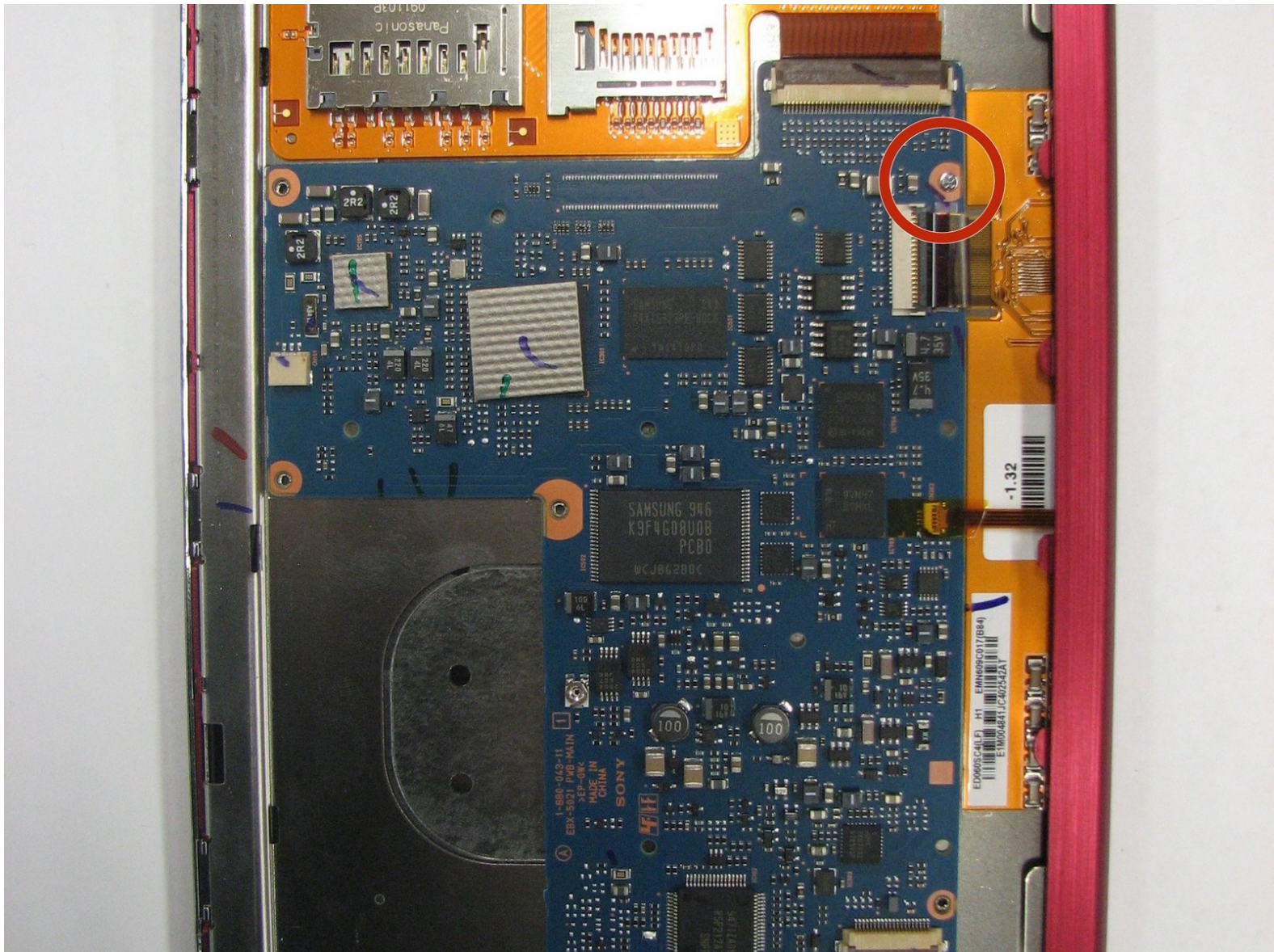


# Sony Reader Touch Edition PRS-600

## Motherboard Replacement

This is a guide that will show you how to remove the motherboard.

Written By: Terrika Ngobili







## TOOLS:

- [Phillips #000 Screwdriver](#) (1)
  - [Spudger](#) (1)
-



## Step 1 — Back Panel



- Using the Phillips head screwdriver PH000, remove the two 1.4 mm screws that are located on the backside of the device.

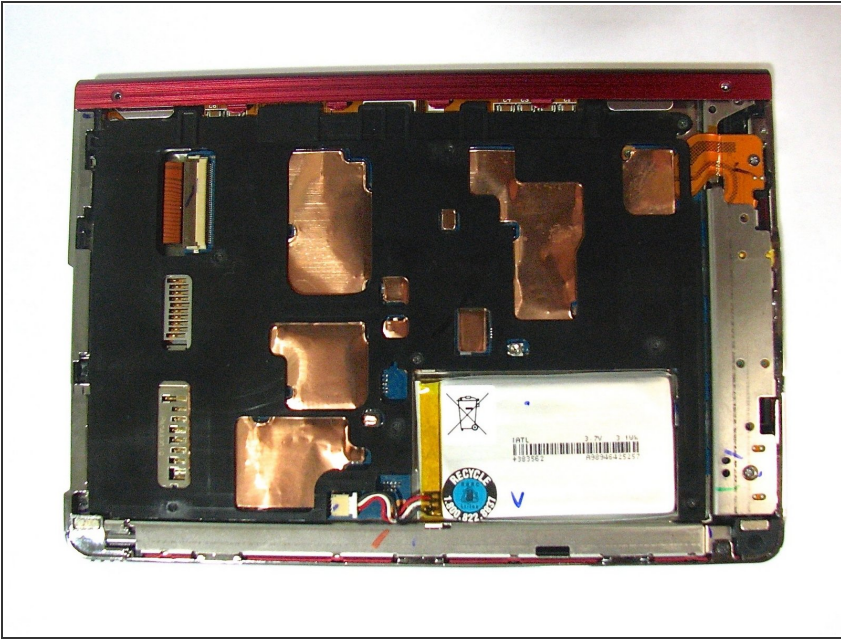
## Step 2



- Slide the back cover off by pushing it to the left, away from the side that held the screws.
- Remove the cover.

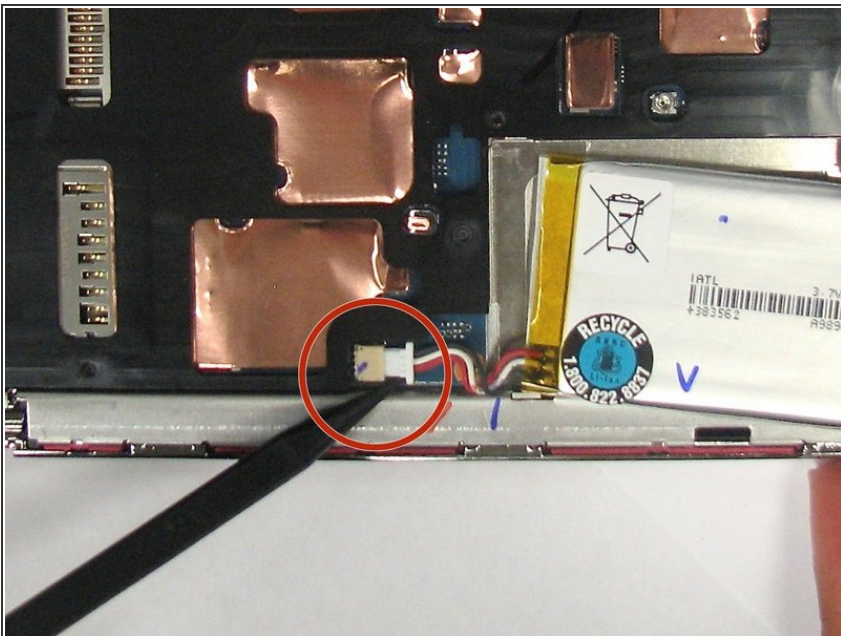


## Step 3



- This is what the device should look like once the back cover panel has been removed.

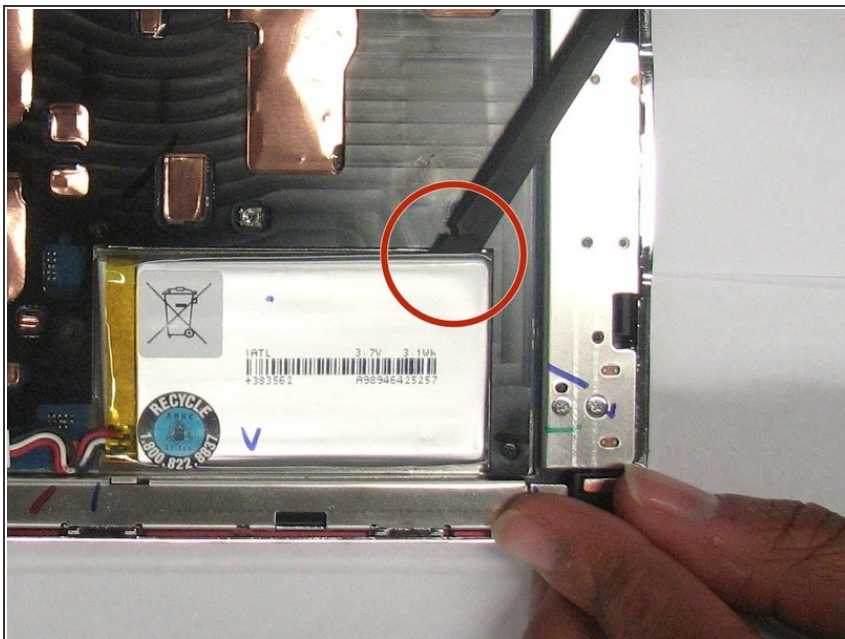
## Step 4 — Battery



- Once the back cover has been removed locate the battery in the bottom right corner of the device.
- Using the pointed end of the spudger, push out the white plug that is connected to the battery from its beige base.

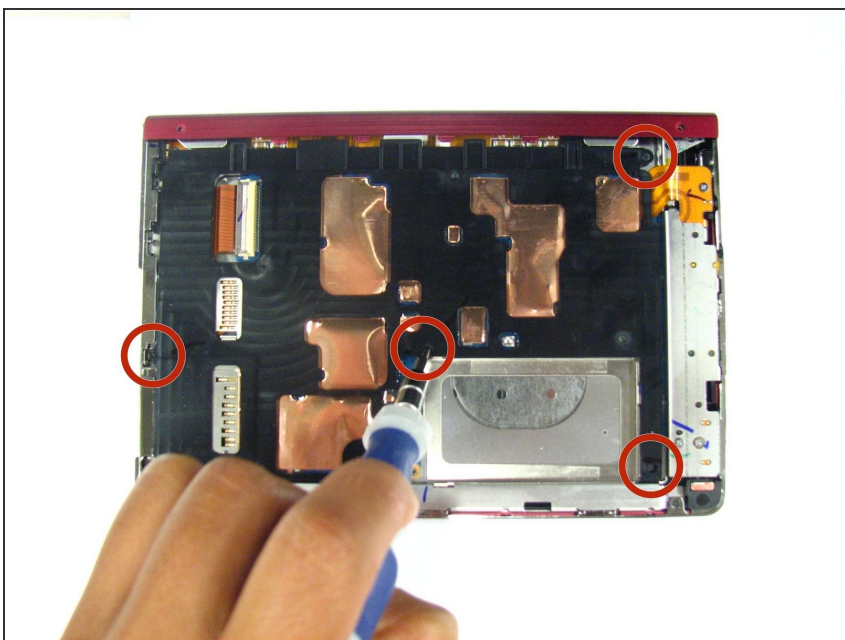


## Step 5



- Use the flat end of the spudger to pry the battery out of its holder. There may be glue holding it in place.

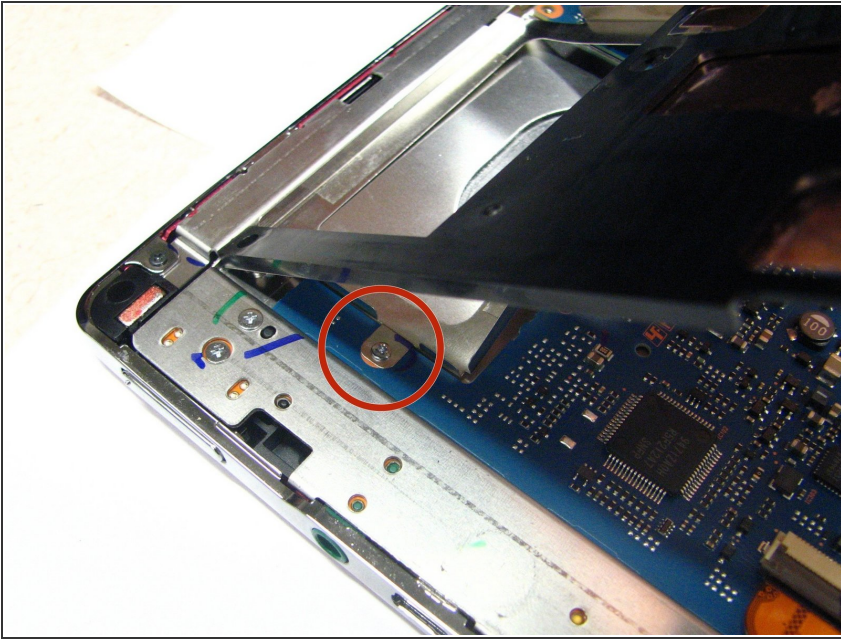
## Step 6 — Inner Casing



- Using a screwdriver remove the four 1.4 mm screws that are holding the black plastic casing in place.



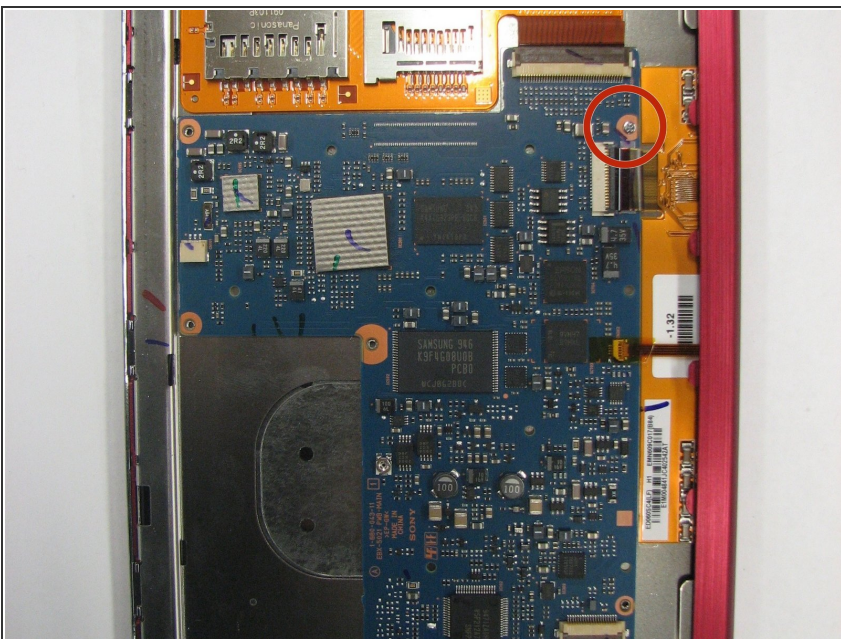
## Step 7



- Pry open the black casing to access the screw that is holding down the battery holder.
- Remove the one 1.4 mm screw that is holding down the battery holder located under black casing.
- Lift the black inner casing and the battery holder out of the device.

⚠ The battery holder and the black inner casing are connected by a thin strip of copper. There may be glue holding the black inner casing in place.

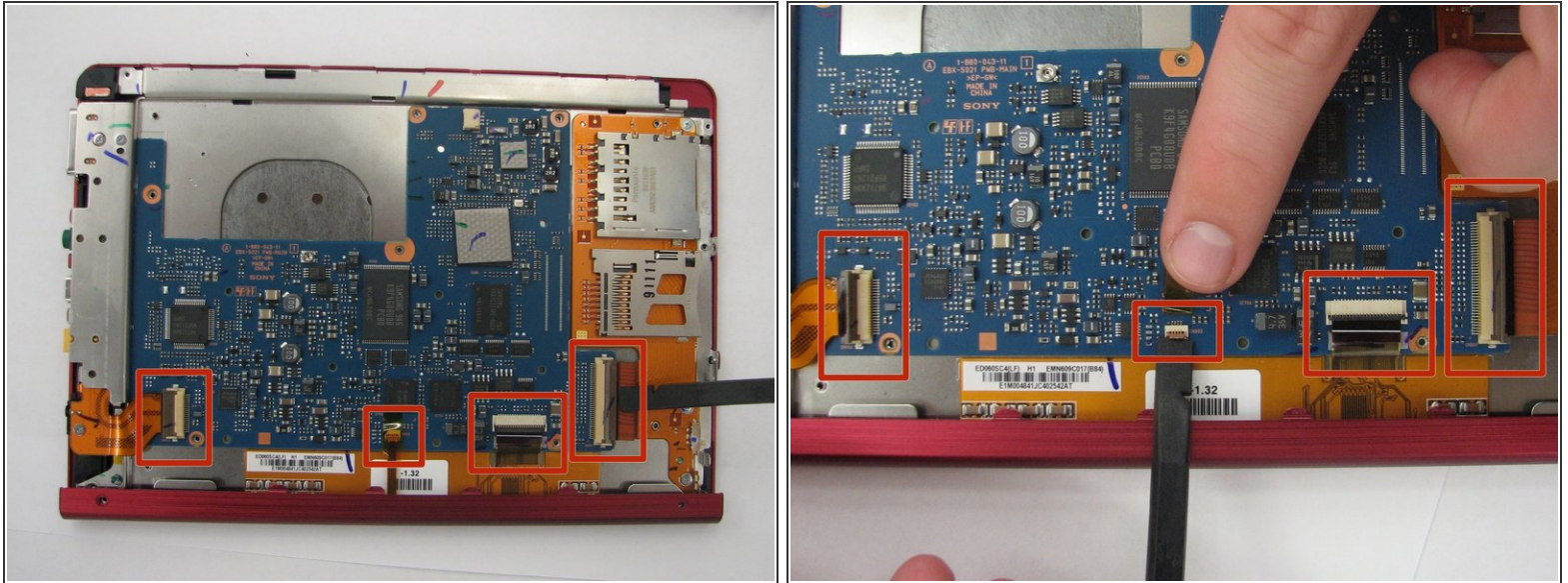
## Step 8 — Motherboard



- Using a Phillips head screwdriver, remove the one 1.4 mm screw holding in the motherboard.



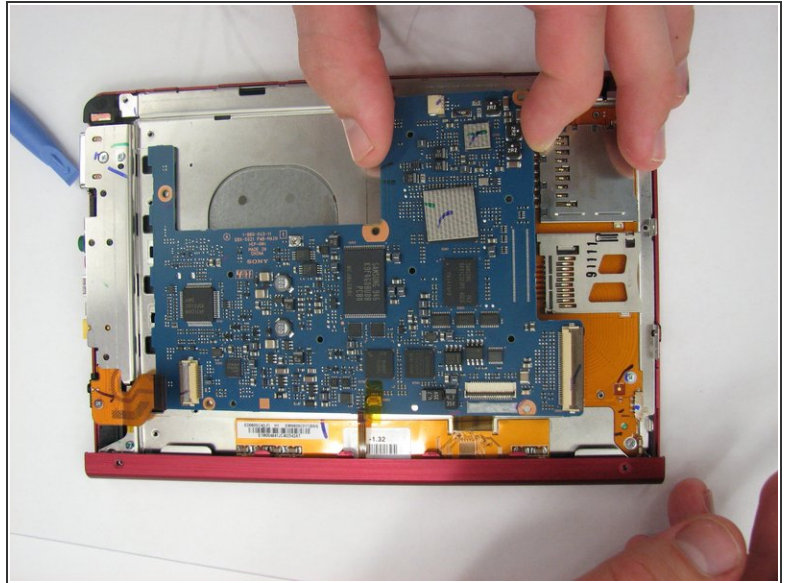
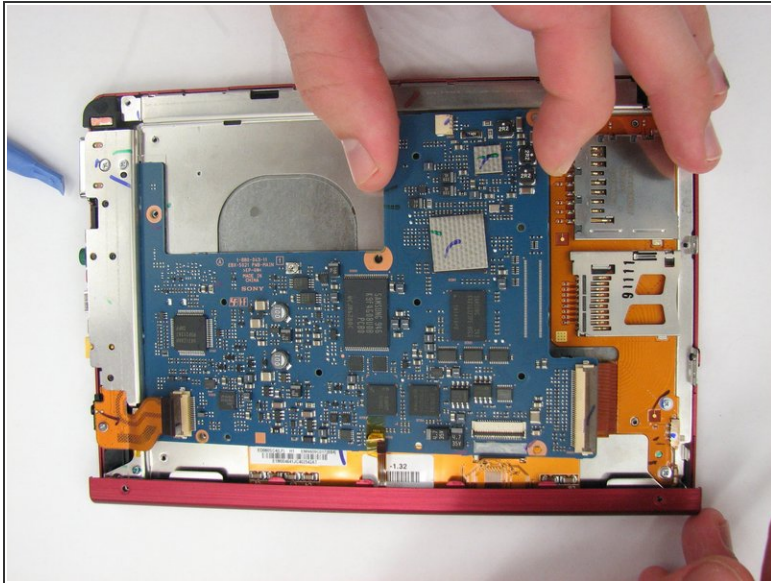
## Step 9



- Using the flat end of the spudger, flip up the 4 latches holding down the thin, orange strips that connect the motherboard to the screen, audio/AC adapter/micro USB ports, and SD card/PRO Duo ports.
- To disconnect the the screen, audio/AC adapter/micro USB ports, and SD card/PRO Duo ports pull each orange slip away from their corresponding latch.



## Step 10



- Lift the end of the motherboard closest to the memory cards and pull out.

To reassemble your device, follow these instructions in reverse order.